

FREE DEPLOYMENT TIME OF ENERGY STORAGE POWER STATION



What is storage duration? Storage duration is the amount of time storage can discharge at its power capacity before depleting its energy capacity. For instance, a battery with 1 MW of power capacity and 4 MWh of usable energy capacity will have a storage duration of four hours.



Should energy storage systems be deployed alongside renewables? Energy storage systems must be deployed alongside renewables. Credit: r.classen via Shutterstock. At the annual Conference of Parties (COP) last year, a historic decision called for all member states to contribute to tripling renewable energy capacity and doubling energy efficiency by 2030.



What is the difference between rated power capacity and storage duration? Rated power capacity is the total possible instantaneous discharge capability of a battery energy storage system (BESS), or the maximum rate of discharge it can achieve starting from a fully charged state. Storage duration, on the other hand, is the amount of time the BESS can discharge at its power capacity before depleting its energy capacity.



How does storage duration affect future deployment opportunities? The four phases, which progress from shorter to longer duration, link the key metric of storage duration to possible future deployment opportunities, considering how the cost and value vary as a function of duration, with the potential to reach more than 100+GW of installed storage capacity in the U.S.



What is the energy storage system? The energy storage system includes 1x5 MWx2 h LiB, 1x2 MWx2 h VRFB. And the wind power of 99 MW had been put into operation in August 2012. The system is connected with the 35 kV bus. Through intelligent control, the system stores and releases power according to the coordinating with wind power.

FREE DEPLOYMENT TIME OF ENERGY STORAGE POWER STATION



How much energy is stored in the world? Worldwide electricity storage operating capacity totals 159,000 MW, or about 6,400 MW if pumped hydro storage is excluded. The DOE data is current as of February 2020 (Sandia 2020). Pumped hydro makes up 152 GW or 96% of worldwide energy storage capacity operating today.



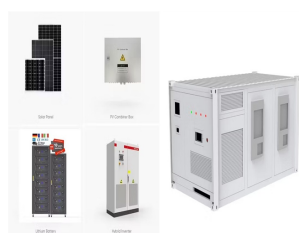
The four phases, which progress from shorter to longer duration, link the key metric of storage duration to possible future deployment opportunities, considering how the cost and value vary as a function of duration, with the ???



According to Power Technology 's parent company, GlobalData, global energy storage capacity is indeed set to reach the COP29 target of 1.5TW by 2030. Rich explains that pumped storage hydroelectricity (PSH) has been ???



In order to promote the deployment of large-scale energy storage power stations in the power grid, the paper analyzes the economics of energy storage power stations from three aspects of ???



Energy can be stored in batteries for when it is needed. The battery energy storage system (BESS) is an advanced technological solution that allows energy storage in multiple ways for later use. Given the possibility that an ???

FREE DEPLOYMENT TIME OF ENERGY STORAGE POWER STATION



A technician inspects a turbine at a wind farm in Hinggan League, Inner Mongolia autonomous region, in May 2023. [WANG ZHENG/FOR CHINA DAILY] China's power storage capacity is on the cusp of growth, fueled by ???



Review of Black Start on New Power System Based on Energy Storage Technology. Jin Fan 1, Litao Niu 2, Cuiping Li 3, Gang Zhang 2, He Li 3, Yiming Wang 3, Junhui Li 3,*, Qinglong Song 3, Jiacheng Sun 3, Jianglong ???



The design of fast charging station is based on integrating renewable energy sources, such as PV and wind turbine (WT), where their intermittent generation can be balanced with energy storage. Hybrid energy ???