

# FULL SET OF PHOTOVOLTAIC PANEL REMOVAL PLAN DESIGN



What is a solar panel layout drawing? Here's a rundown of many of the terms you may encounter. Also known as a solar array layout or solar PV layout, a solar panel layout drawing is a key component of a solar plan set. It provides a visual representation of how the panels will be arranged and installed on a specific site.



What is a solar panel set? Solar panel sets help to make the process of installing PV systems as smooth as possible. In addition, they enable the installer to foresee likely challenges as well as determine the cost of a project. Contact SP Drafting today for competitive pricing and fast turnaround on solar plan sets.



What are technical solar drawings? Numerous terms are used to describe technical solar drawings, and they often overlap. Here's a rundown of many of the terms you may encounter. Also known as a solar array layout or solar PV layout, a solar panel layout drawing is a key component of a solar plan set.



Should we reclaim solar panels through the decommissioning phase? The fact remains the solar industry is skyrocketing in growth, despite any short-term logistical or policy setbacks. As such, the need to process and reclaim solar panels through the decommissioning phase is a high priority for getting ahead of a huge waste wave.



What is the Seia PV recycling partner network? The Solar Energy Industries Association's (SEIA) PV Recycling Working Group has been preparing for solar recycling needed in coming years by developing the SEIA PV Recycling Partner Network. See Figure 1 for a map of current locations. 17 Curtis, Taylor, et al. Best Practices at the End of the Photovoltaic System Performance Period.

# FULL SET OF PHOTOVOLTAIC PANEL REMOVAL PLAN DESIGN



What is a solar plan set? Solar plan sets, including solar panel schematics, offer a comprehensive breakdown of panel-to-inverter wiring, grounding methods, and other PV panel-specific electrical details, guiding installers in the precise assembly and wiring of the solar array.



Having a recovery plan in place with PV recycling vendors will be key to fast and efficient decommissioning efforts. At the end of a solar farm's life or a Power Purchase Agreement (PPA), owners have a few options for ???



This Site plan or layout drawing allows us to quote you a delivered price for the exact solar system you want. It also enables our design drawing partners to quickly generate an electrical drawing or complete permit plan set for your project. You can see ???



The paper presents a preliminary design of the cleaning mechanism for the solar panel surface using a semiautomatic wiper control system. A DC motor is utilized to power the wiper.



How to Install Solar Panels at Home? Are you considering installing solar panels at home to harness renewable energy and save on electricity bills? In this guide, we will take you through a detailed step-by-step process of installing solar panels at home, from planning to powering up your solar system. Things to Consider Before Solar Panel Installation: 1. Analyze ???

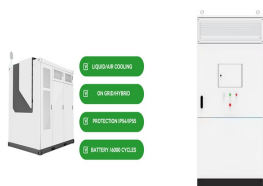
# FULL SET OF PHOTOVOLTAIC PANEL REMOVAL PLAN DESIGN



The Process of Creating a PV Plan Set. Creating a PV plan set is a meticulous and detail-oriented task. This procedure doesn't merely involve drawing lines and diagrams; it incorporates a deep understanding of the site, the solar ???



The biggest reason for the price drop lies in the photovoltaic (PV) panels themselves: 90% reduction in price (seen in 2019) from \$2/watt to a measly \$0.20/watt! On average, in the United States between 2010 and 2020, the cost of installing a residential solar system fell from \$7.50/watt to \$2.50/watt .



The proposed solution involves utilizing a robot cleaning device that travels along the entire length of the solar panel to remove dust particles. The control system of the robot cleaning device is implemented using an Arduino Pro Mini microcontroller. The device is controlled by a microprocessor and is designed to automatically complete



Many countries consider utilizing renewable energy sources such as solar photovoltaic (PV), wind, and biomass to boost their potential for more clean and sustainable development and to gain



Suppose, in our case the load is 3000 Wh/per day. To know the needed total W Peak of a solar panel capacity, we use PFG factor i.e. Total W Peak of PV panel capacity =  $3000 / 3.2$  (PFG) = 931 W Peak. Now, the required number of PV ???

# FULL SET OF PHOTOVOLTAIC PANEL REMOVAL PLAN DESIGN



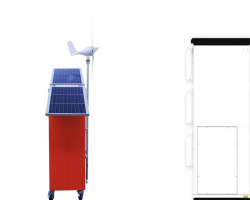
This paper established a wind-photovoltaic-storage capacity planning model for the microgrid in expressway service areas, which considered the dust removal maintenance of photovoltaic panels.



The plan set design will follow the proposal or sold design, as much as possible while accounting for AHJ requirements, site survey information, such as structural and electrical considerations, mounting hardware limitations, etc. have made it so standard projects with approved equipment can be permitted without needing a full traditional



PV-3 Solar Attachment Plan. A PV-3 Solar Attachment Plan focuses on the physical attachment of the solar panels to the structure. This plan includes mounting equipment specifications and secure installation instructions. A professionally-drafted Solar Attachment Plan ensures that the system is installed safely and securely. PV-4 Line Diagram



In this work, design, and development of a rover robot for cleaning and monitoring of solar panel is presented. It is controlled wirelessly using bluetooth module from a range of 10 m.



Photovoltaic (PV) systems (or PV systems) convert sunlight into electricity using semiconductor materials. A photovoltaic system does not need bright sunlight in order to operate. It can also generate electricity on cloudy and rainy days from reflected sunlight. PV systems can be designed as Stand-alone or grid-connected systems.

# FULL SET OF PHOTOVOLTAIC PANEL REMOVAL PLAN DESIGN



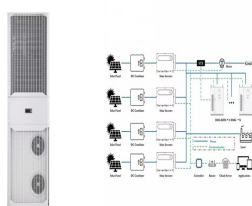
Our solar panel layout tool and PV design software make it easy for you to plan and optimize your solar panel installation. With advanced features and a user-friendly interface, you can confidently design a system that meets your energy needs and budget. Try ???



These technical drawings outline the specifications, dimensions, and installation guidelines for solar panels within the system. PV plan sets, which include solar panel drawings, are critical for ensuring the proper ???



Solar plan sets are a crucial part of the solar permitting process - they enable you to visualize how the system will look, provide a detailed plan for your installation contractor, and are necessary to get building and electrical permits approved for your project. At Avila Solar, we offer a variety of different affordable and detailed solar plan set packages to meet your solar project needs.



Installing solar panels can be a significant investment, so having a properly designed solar panel stand is crucial to protect that investment and optimize solar production. With the right solar panel stand design, you can ???



Planet Plan Sets is a full service plan drafting service provider to residential contractors of PV solar and storage systems. Drafting of Plan Sets for Residential PV Contractors Full detailed plan sets with all the important elements needed to validate AHJ permitting review including: site plan, layout, structural information, wire diagrams, labels/placards, spec sheets, ???

# FULL SET OF PHOTOVOLTAIC PANEL REMOVAL PLAN DESIGN



Solar panel removal and reinstall is a complex task, often underestimated. In reality, when it's time for roof repairs or system upgrades, homeowners' #1 concern becomes??? Solar panel removal and reinstall. They ???



A solar panel drafting and design freelancer charges around \$100 to \$200 for a complete plan set, including system layout, structural details, wire diagrams, specification sheets, equipment labeling, certification documentation, and site plan. Solar panels' power generation capacity may affect the price, but not by much.



The detailed component configuration of the solar panel cleaning system constructed using 3D model is shown in Fig. 1a???j which highlights its inherent modularity and seamless interaction with existing solar arrays. A solar panel is to be cleaned is shown in Fig. 1a. The other details parts of cleaning mechanism system are shown in subsequent



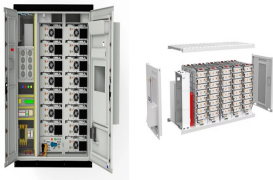
A detachable cleaning device that utilizes electrodynamic force has been improved to clean hardly adhered dust particles owing to the moisture absorption from the surface of photovoltaic (PV) panels.



See also: Solar Panel Wire Size (Cable Gauge + Calculations Chart) How to install solar panel brackets . Solar panel brackets are just a nut and bolt attachment. They come in a variety of styles, and each is slightly different. Many slide onto the solar frame railings and then tighten to hold the panel in place.

# FULL SET OF PHOTOVOLTAIC PANEL REMOVAL PLAN DESIGN

---



Where  $\eta_{1}$  is the power generation efficiency of the PV panel at a temperature of  $T_{cell}$ ,  $\tau_{1}$  is the combined transmittance of the PV glass and surface soiling, and  $\tau_{clean}$  is the transmittance of the PV glass in the soiling ???