

GANTRY FRAME INSTALLATION OF PHOTOVOLTAIC PANELS



What are Solar frame mounts? Solar frames are a part of the larger mounting system used to secure solar panels in both ground and rooftop applications. For solar panel farms, frame mounts can be supplied as much larger systems so as to provide the support for large panels across a variety of ground conditions. What is the best angle for solar panels?



What is solar panel framing process? solar panel framing process, carried out by specialized framing machines, is a vital step that provides structural support, protection, and mounting functionality to solar panels. Prepare and debug the aluminum frame according to the size of the solar panel components. Install the aluminum frame on the spreading machine for automatic gluing.



What is a solar panel framing machine? It is really important in putting together a solar panel. A machine called a solar panel framing machine is used in the process of making solar panels. It helps to position and secure the solar cells, back sheets, and other parts inside an aluminum frame. We will learn about the structures and components of machines used for making solar panels.



What is a roof mounted photovoltaic system guidance? The guidance refers only to the mechanical installation of roof mounted integrated and stand-off photovoltaic systems; it provides best practice guidance on installation requirements and does not constitute fixing instructions.



Can I use a frame mount for a solar panel farm? For solar panel farms, frame mounts can be supplied as much larger systems so as to provide the support for large panels across a variety of ground conditions. By ticking this box you agree with the handling of my data in accordance with our privacy policy.

GANTRY FRAME INSTALLATION OF PHOTOVOLTAIC PANELS



What are solar panel frames? Solar panel frames are systems specifically designed to hold photovoltaic modules in place and provide the optimal tilt to capture the maximum amount of solar energy.



PV module/panel: stable frame that groups a number of interconnected PV cells. Common characteristics are: 72 (6x12) cells, 300 Watt (peak), 36 Volts, 8 Amps, 15% efficiency, 26kg. There are important factors to consider during the design and installation of the PV panel system, which affect both the system performance and the control of



A renewable energy-ready home (RERH) is one that is built with the wiring and plumbing conduit and other components in place to facilitate the future installation of solar photovoltaic (PV) panels and/or solar water heating panels.



In this comprehensive blog post, we'll delve into the inner workings of solar panel framing machines, exploring their key components, the step-by-step framing process, and the crucial role they play in optimizing solar ???



Solar Power can be used to provide free energy from the sun for many different applications. Marlec Engineering are experts in off-grid and grid connected solar installations with over 30 years experience in the field. As a distributor of a range of solar panel types for many different purposes, and with an experienced in house design team we are able to realise your goals ???

GANTRY FRAME INSTALLATION OF PHOTOVOLTAIC PANELS



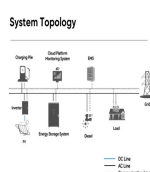
Here is a piece on Solar Panel Fixing Options built to help Developers, Contractors, Architects, and Homeowners grasp what's on offer for fixing PV panels. some allow you to install the panel directly to them. There are several options, but the kit where the ground-mounted frame is mechanically fixed to strips of concrete poured into



GUIDE TO THE INSTALLATION OF PV SYSTEMS 1.0 INTRODUCTION
1.1 Scope The scope of this document is to supply system installers with information to ensure that a mains-connected PV system meets current UK standards and best practice recommendations. It is primarily aimed ???



In roof solar, or integrated solar panels are the ideal solution for new builds or anyone looking to re-roof there home. Many customers opt for an in-roof system because of the sleeker aesthetics. As the solar panel sit snugs within a tray, there is no space for birds to nest under and the panels appear flush with the rest of the roof. However, this does result in less ???

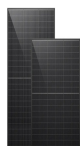


The Frame. The panels themselves are mounted on aluminium frames. These are then bolted to a stainless frame that houses three panels each. There is a stainless strut between each panel on the underside. Solar panel stainless ???



The vehicle of claim 4 wherein the first frame component is configured to hold a solar panel as the object and roll the held solar panel around the axis. 6. The installation of photovoltaic arrays often presents logistical challenges. Not only does the site for the photovoltaic array need to be properly prepared, but large quantities of

GANTRY FRAME INSTALLATION OF PHOTOVOLTAIC PANELS



This guide helps you understand the gantry crane installation steps, providing instruction videos to help you better understand the process. Whatsapp ID:+86 189 0373 9673. WeChat ID: Install the hoist and trolley systems on the ???



Aluminium frames are a crucial component of solar panels, providing structural support and protecting the delicate photovoltaic cells. Understanding the technical specifications of aluminium frames is essential for selecting the right frames for your specific solar installation. This article delves into the key specifications to consider when choosing aluminium frames for ???



Ground Mounted Solar Panel Systems UK; Can I build my own Solar Panel System UK? - DIY Solar; Getting Solar Panel Quotes in the UK 2024; How much Space do I need for Solar Panels? UK Guide 2024; The Smart Export Guarantee (SEG) UK; Solar Panels for New Builds: A UK Guide for 2024; Solar Panels for Schools and Colleges in the UK; How Much



Find Solar Panel Installation stock images in HD and millions of other royalty-free stock photos, illustrations and vectors in the Shutterstock collection. Thousands of new, high-quality pictures added every day.

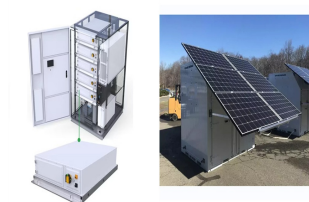


The beauty of a mobile A Frame crane is that you can take the load to the gantry or take the gantry to the load. 3000kg Portable A Frame Gantry Dimensions. With a maximum under beam height of 4.5 metres and maximum span of 5 metres, ???

GANTRY FRAME INSTALLATION OF PHOTOVOLTAIC PANELS



Do not drill holes in the frame. This may compromise the frame strength and cause corrosion of the frame. Do not scratch the anodized coating of the frame (except for grounding connection). It may cause corrosion of the frame or compromise the frame strength. Do not attempt to repair the modules with damaged glass. Do not drill holes in the frame.



The energy systems must be transformed and need to be shifted on the maximum penetration of the renewable. Solar photovoltaic (PV) power generation is one of the most promising sources in this regard.



This Code of Practice sets out the requirements for the design, specification, installation, commissioning, operation, and maintenance of grid-connected solar photovoltaic (PV) systems. Key safety considerations in the protection and ???



We explain how silicon crystalline solar cells are manufactured from silica sand and assembled to create a common solar panel made up of 6 main components - Silicon PV cells, toughened glass, EVA film layers, protective back sheet, junction box with connection cables. sheet supported within an aluminium frame. Once installed, solar panels



The best solution is to build a dedicated panel gantry so that the panels are clear of the deck and are in an area of relatively little shade. was three standard pulpit rail mounting brackets that I attached to a stout sheet of aluminium bolted across the panel frame - best seen below with the panel folded down. a typical solar panel

GANTRY FRAME INSTALLATION OF PHOTOVOLTAIC PANELS



Products within the range include: the FLINrail, a rigid solar panel that can be used while sailing by being hooked onto a boat's guardrails; the FLINstripe, designed to be mounted along a boom's lazy bag using Velcro ???



These structures allow easy and efficient installation of photovoltaic modules on the ground, providing an optimal inclination to maximize solar energy collection. Their versatile design makes them ideal for residential, ???



Some common solar panel system sizes include a 3kW solar panel system, a 4 kilowatt solar panel system and a 5kW solar panels. For instance, a typical 2kW solar panel system suited for 1-3 people will need anywhere between 5 and 8 solar panels (for 350W panels).



To mount the PV modules, a sturdy frame, often made of lightweight aluminum, is utilized. Discover the ideal solar panel sizes for your installation. Learn about common dimensions, types of panels, and space requirements for residential and commercial solar systems. with current solar panel prices in Europe below 6 cents per watt



Ground-mounted solar panels can be an investment, and you'll need to consider installation costs, maintenance, and any additional landscaping. It's like planning a budget for a home renovation project ??? you need to know ???

GANTRY FRAME INSTALLATION OF PHOTOVOLTAIC PANELS



Frame is the last component to be attached to the module. solar panel waste recycling is under the control of the Japanese environment ministry and solar panel manufacturers participate with local companies in research on recycling technology that Based on literature, analysing the expected rates of panel installation and solar panels



It is possible to install up to 16-24 solar panels on each gantry frame depending on the size of the panels. FLEXIBILITY. The horizontal rail positions can be adjusted both in X and Y point which makes it possible to install almost any ???



Driven steel piles are the most common form of foundation found in ground-mount solar installation. They are traditionally installed using a piling rig, but can be set into concrete if required. Single post & Twin post systems. Suitable for: Sites where breaking ground is possible, geotechnical results permit use and/or machinery is

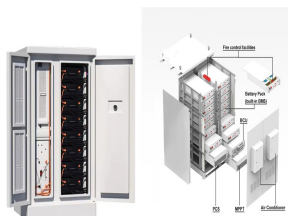


Most sailors will choose a solution with solar panels which will raise the question; where to place them on the boat.? To get enough capacity, most often the panels will need to be placed on a solar arch on the stern of the boat. Having a solar arch mounted, will also give you the option to carry and hoist a dinghy from the integrated davits.



Suppose, in our case the load is 3000 Wh/per day. To know the needed total W Peak of a solar panel capacity, we use PFG factor i.e. Total W Peak of PV panel capacity = $3000 / 3.2 \text{ (PFG)} = 931 \text{ W Peak}$. Now, the required number of PV panels are = $931 / 160\text{W} = 5.8$. This way, we need 6 numbers of solar panels each rated for 160W.

GANTRY FRAME INSTALLATION OF PHOTOVOLTAIC PANELS



By keeping these considerations in mind, you'll be well on your way to a successful solar panel installation. It's all about good planning and making sure you're ready for this exciting step towards renewable energy.

Placing the Panels: After the frame is up, the solar panels are mounted onto it. Each panel needs to be securely



1 Introduction. The rising need for eco-friendly and renewable energy solutions has amplified the focus on photovoltaic (PV) systems. Bifacial PV (BiPV) panels, among these technologies, have garnered considerable interest due to their capability to capture sunlight from both surfaces, enhance energy output, and lower the average cost of electricity [].



However, homes and businesses can use smaller ones. It simply depends on the size of the plant. The four main components of a solar power plant system are the; Solar Panels; Charge Controller; Inverter; Battery Bank; What are Solar Panel Accessories? The solar panel accessories can vary depending on the type and style of the panel you operate.



That goal was realized by replacing glass with a thin, clear polymer film of ethylene tetrafluoroethylene (ETFE), trademarked Tefzel, from DuPont Performance Materials (Wilmington, DE, US), resulting in Armageddon's version 1.0 panel design, SolarClover, the industry's first film-covered solar panel to meet the solar industry UL1703 standard (Standard ???