

GENERAL DESIGN OF ENERGY STORAGE POWER STATION



Can energy storage power stations be adapted to new energy sources? Through the incorporation of various aforementioned perspectives, the proposed system can be appropriately adapted to new power systems for a myriad of new energy sources in the future. Table 2. Comparative analysis of energy storage power stations with different structural types. storage mechanism; ensures privacy protection.



Should energy storage power stations be scaled? In addition, by leveraging the scaling benefits of power stations, the investment cost per unit of energy storage can be reduced to a value lower than that of the user's investment for the distributed energy storage system, thereby reducing the total construction cost of energy storage power stations and shortening the investment payback period.



How important is sizing and placement of energy storage systems? The sizing and placement of energy storage systems (ESS) are critical factors in improving grid stability and power system performance. Numerous scholarly articles highlight the importance of the ideal ESS placement and sizing for various power grid applications, such as microgrids, distribution networks, generating, and transmission [167,168].



Why is energy storage important in electrical power engineering? Various application domains are considered. Energy storage is one of the hot points of research in electrical power engineering as it is essential in power systems. It can improve power system stability, shorten energy generation environmental influence, enhance system efficiency, and also raise renewable energy source penetrations.



What is a flexible energy storage power station (fesps)? Firstly, this paper proposes the concept of a flexible energy storage power station (FESPS) on the basis of an energy-sharing concept, which offers the dual functions of power flow regulation and energy storage. Moreover, the real-time application scenarios, operation, and implementation process for the

GENERAL DESIGN OF ENERGY STORAGE POWER STATION



FESPS have been analyzed herein.

GENERAL DESIGN OF ENERGY STORAGE POWER STATION



What is a stationary battery energy storage (BES) facility? A stationary Battery Energy Storage (BES) facility consists of the battery itself, a Power Conversion System (PCS) to convert alternating current (AC) to direct current (DC), as necessary, and the ???balance of plant??? (BOP, not pictured) necessary to support and operate the system. The lithium-ion BES depicted in Error!



If this pumped-storage power-station represents a new generation of pumped-storage power stations, the installation of four 50-MW full-power variable speed units, a set of 100 MW energy storage battery system, and the appropriate photovoltaic energy storage in the power station empty space, combined with the conventional fixed-speed units can

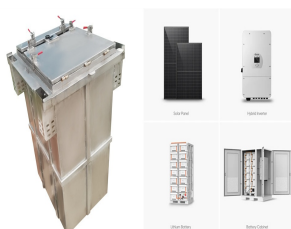


In addition to the operating environment, the fault of the energy storage power station is directly related to the connection structure of the electrical collection system (i.e., the connection mode of electrical equipment) during the design period of the energy storage power station, that is, different topological structures of the electrical



2.2 Fire Characteristics of Electrochemical Energy Storage Power Station

. Electrochemical energy storage power station mainly consists of energy storage unit, power conversion system, battery management system and power grid equipment. Therefore, the ???re area can be generally divided into two categories: the energy



Based on the current market rules issued by a province, this paper studies the charge-discharge strategy of energy storage power station's joint participation in the power spot market and the ???

GENERAL DESIGN OF ENERGY STORAGE POWER STATION



Hydro Power Plant Definition: Hydro Power Plant is an electricity-producing plant in which the water is an essential fuel, the potential energy is being converted into kinetic energy and kinetic energy is further converted into mechanical and into electrical energy with the help of a turbine and motor. We will understand how it works in very



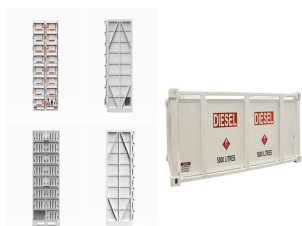
A Battery Energy Storage System (BESS) significantly enhances power system flexibility, especially in the context of integrating renewable energy to existing power grid. It enables the effective and secure integration of a greater renewable power capacity into the grid.



The article first introduces the concept of industrial and commercial energy storage and energy storage power stations, outlining their respective roles in energy storage, management, and grid stability. It then delves into a detailed comparison of both systems in terms of size and capacity, application scenarios, configuration and technology, features and services, technical economy, ???



Battery energy storage systems (BESS) are a key element in the energy transition, with several fields of application and significant benefits for the economy, society, and the environment. Enel Green Power S.p.A. VAT 15844561009



2.0.2 new-type energy storage station ???,??? ???

GENERAL DESIGN OF ENERGY STORAGE POWER STATION



Relying on the project site of Langli energy storage station, the secondary system architecture of the energy storage station is simplified, the stability of control operation and the fast



energy storage. The Natrium reactor maintains constant thermal power at all times, maximizing its capacity factor and value. Molten salt energy storage is more resilient, flexible and cost-effective than current grid-scale battery technology. The Natrium plant design is simple and streamlined, making it easier, faster and



Energy storage systems for electricity generation operating in the United States Pumped-storage hydroelectric systems. Pumped-storage hydroelectric (PSH) systems are the oldest and some of the largest (in power and energy capacity) utility-scale ESSs in the United States and most were built in the 1970's. PSH systems in the United States use electricity from electric power grids to ???



Finally, seasonal energy storage planning is taken as an example¹ to clarify its role in medium - and long-term power balance, and the results show that although seasonal storage increases the



According to the safety and stable operation requirements of Xing Yi regional grid, 20MW/10MWh LiFePO₄ battery storage power station is designed and constructed. In order to test the performance and ensure the operation effect of the energy storage power station, this paper introduces the overall structure of the energy storage power station, including the electrical ???

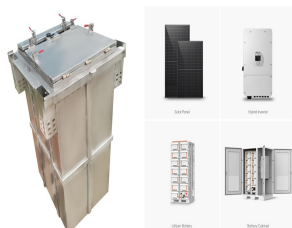
GENERAL DESIGN OF ENERGY STORAGE POWER STATION



On November 16, Fujian GW-level Ningde Xiapu Energy Storage Power Station (Phase I) of State Grid Times successfully transmitted power. The project is mainly invested by State Grid Integrated Energy and CATL, which is the largest single grid-side standalone station-type electrochemical energy storage power station in China so far.



According to the dynamic distribution mode of the above energy storage power stations, when the system energy storage output power is stored, the energy storage power station that is in the critical over-discharge state can absorb the extra energy storage of other energy storage power stations and still maintain the charging state, so as to



Unlike today's Light Water Reactors, the Natrium reactor is a 345-megawatt sodium fast reactor coupled with TerraPower's breakthrough innovation ??? a molten salt energy storage system, providing built-in gigawatt-scale energy storage. This makes the plant a perfect support for high-renewable penetration grids where variable power output is a



This article provides an overview of industrial and commercial energy storage power stations, focusing on their construction, operation, and maintenance management. the type, battery capacity and layout of energy storage equipment, as well as the design of the power system and the design of the control system. The general principles are: 1



The energy storage revenue has a significant impact on the operation of new energy stations. In this paper, an optimization method for energy storage is proposed to solve the energy storage configuration problem in new energy stations throughout battery entire life cycle. At first, the revenue model and cost model of the energy storage system are established ???

GENERAL DESIGN OF ENERGY STORAGE POWER STATION



Pumped storage hydropower (PSH) is a type of hydroelectric energy storage. It is a configuration of two water reservoirs at different elevations that can generate power as water moves down from one to the other (discharge), passing through a turbine.



Large-scale integration of renewable energy in China has had a major impact on the balance of supply and demand in the power system. It is crucial to integrate energy storage devices within wind power and photovoltaic ???



The power station, with a 300MW system, is claimed to be the largest compressed air energy storage power station in the world, with highest efficiency and lowest unit cost as well. (\$206 million), its rated design efficiency is 72.1 percent, meaning that it can achieve continuous General Manager & Executive Vice President Oklahoma



On May 14, 1968, the first PSPS in China was put into operation in Gangnan, Pingshan County, Hebei Province. It is a mixed PSPS. There is a pumped storage unit with the installed capacity of 11 MW. This PSPS uses Gangnan reservoir as the upper reservoir with the total storage capacity of $1.571 \times 10^9 \text{ m}^3$, and uses the daily regulation pond in eastern Gangnan as the lower ???

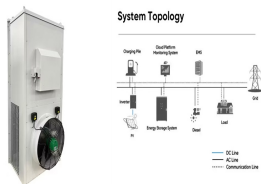


The participation strategy of the energy storage power plant in the energy arbitrage and frequency regulation service market is depicted in Fig. 15, while the SOC curve of the energy storage power plant is presented in Fig. 16. Upon analyzing the aforementioned scenarios, it is evident that the BESS can generate revenue in both markets.

GENERAL DESIGN OF ENERGY STORAGE POWER STATION



With the innovation of battery technology, large-capacity centralized energy storage power stations continue to be used as power sources to provide energy support for the grid [5 ??? 7], which are included in the grid-connected operation and auxiliary service management. Li et al. [8, 9] concluded that the main functions of the energy storage power ???



decision-making on electricity prices and energy storage power station capacity. Design/methodology/approach ??? Based on the research framework of time-of-use pricing, this paper Center of Humanities and Social Sciences in the general Colleges and Universities of Xinjiang Uygur Autonomous Region (XJEDU2023 P001), the University-local



1 1 1.0.1 ??????????????, ,,??? 1.0.2 ,



With the increasing global demand for sustainable energy sources and the intermittent nature of renewable energy generation, effective energy storage systems have become essential for grid stability and reliability. This paper presents a comprehensive review of pumped hydro storage (PHS) systems, a proven and mature technology that has garnered significant interest in ???



To leverage the efficacy of different types of energy storage in improving the frequency of the power grid in the frequency regulation of the power system, we scrutinized the capacity allocation of hybrid energy storage power stations when participating in the frequency regulation of the power grid. Using MATLAB/Simulink, we established a regional model of a ???

GENERAL DESIGN OF ENERGY STORAGE POWER STATION



A power system thus typically extends from a power plant right up to the sockets inside customers' premises. These are sometimes referred to as full power systems as they are autonomous. Smaller power systems could be made of part or sections of a larger, full system.