

GET THE ENERGY STORAGE DEVICE AND OPEN THE FRONT TO CHECK THE TERMINAL



How do you find the last energy storage device? Place the energy storage device near it and break the second seal, which will open more paths. Once that is done, go back to your original spot to pick up the last device. After collecting the third energy storage device, go straight and turn left at the end. You will find the last research terminal near a broken mine car.



How do I activate all the energy storage terminals? So, let's see what steps you need to take to activate all the terminals: Research Terminal #1: Take the first Energy Storage Device and move forward and to the right. You'll have practically no other options, so you'll know where to go right away.



How do you find a research terminal? You will be able to easily spot the research terminal. Place the energy storage device near it and break the second seal, which will open more paths. Once that is done, go back to your original spot to pick up the last device. After collecting the third energy storage device, go straight and turn left at the end.



How do I find the energy device? You must first pick up the Energy Device on the left, which is hidden behind a Geode. As soon as you pick up the Energy Device, the timer will start, and you need to find the corresponding terminal within the time limit. Avoid the floating circles as they will reduce the timer by 30 seconds. Follow this exact path to find the terminal.



How do you unlock a research terminal in Genshin Impact? Acquiring the Energy Storage Device and unlocking the Research Terminal is part of the An Eye for An Eye Quest in Genshin Impact. Players must collect three Energy Storage Devices and use them on three different Terminals to remove the barriers blocking the Research Terminal.

GET THE ENERGY STORAGE DEVICE AND OPEN THE FRONT TO CHECK THE TERMINAL



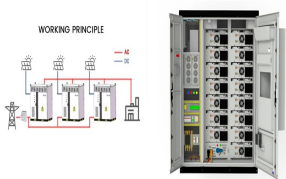
How do you use energy storage devices in Genshin Impact? Players must collect three Energy Storage Devices and use them on three different Terminals to remove the barriers blocking the Research Terminal. The step is quite simple and easy to follow as the Research Terminals are marked on the map in Genshin Impact.



1) Take the Ousia Block on top of the table (head further inside the institute) and hit the unactivated Terminal in front of Nacker / or you can just use your Ousia character. 2) After opening the gate, take the portable Energy ???



Energy storage devices have long been used in commercial buildings and factories to provide an uninterruptible power supply. New technologies extend the range of possible applications in energy management. For example, using ???



Take the next Energy Storage Device and go ahead and turn left. You will immediately see the second terminal. Interact with it and return to the beginning. Research Terminal #3: The last terminal is located straight ahead ???



In this study, the primary configuration of our energy device is depicted in Fig. 1. The TEG component is constructed with 80 pairs of p-Ag 2 Te and n-Ag 2 Se NPTF modules and a ???

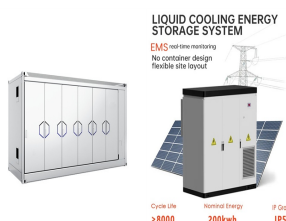
GET THE ENERGY STORAGE DEVICE AND OPEN THE FRONT TO CHECK THE TERMINAL



After activating the terminal, it switches to camera mode, where you can collect and transmit energy from various storage devices. In some cases, you need to switch to a different viewfinder. To do this, point the scope at the ???



Making energy storage devices into easily portable and curved accessories, or even weaving fibers into clothes, will bring great convenience to life. In recent years, The cell core ???



In the quest An Eye for an Eye, many players have a problem with the research terminal, which prevents them from completing the quest and getting out of Fortress of Meropide. In this guide, we will tell you how to get an energy ???



166 Abstract: Based on the energy storage cloud platform architecture, this study considers the extensive configuration of energy storage devices and the future large-scale ???



Then, sprint straight ahead and make a right turn. Quickly collect the Mysterious Ore to the left and proceed to the right side, where you can place the storage device next to ???

GET THE ENERGY STORAGE DEVICE AND OPEN THE FRONT TO CHECK THE TERMINAL



Get the best smart home news, reviews, and recommendations. Clean up Alexa: How to delete smart home devices from Alexa and remove duplicates. Paul Lamkin February 24, 2025. Explainers Zigbee explained: Hubs, the best ???



Energy storage devices - Download as a PDF or view online for free examines the defects present and strategies to improve performance like reducing light degradation and increasing open circuit voltage. switch case, ???



As part of the An Eye for An Eye Quest in Genshin Impact, players need to acquire and activate the Energy Storage Device to unlock the Research Terminal. To proceed, players must collect three Energy Storage ???

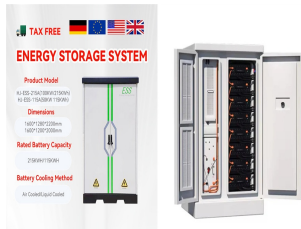


Energy storage will be a very important part of the near future, and its effectiveness will be crucial for most future technologies. Energy can be stored in several different ways and these differ in terms of the type and the ???



Check the power. If your external hard drive is powered by an AC outlet (rather than just the USB port), confirm it's receiving power. Try a different PC. You'll know if the problem lies with your computer if you try using the ???

GET THE ENERGY STORAGE DEVICE AND OPEN THE FRONT TO CHECK THE TERMINAL



To repair an Energy Transfer Terminal, you must use the Terminal's Viewfinder to collect and transfer energy from either a Fixed Storage Device or an Energy Transfer Device.. Can Also be Used to Open Locked ???