

GREEN GENIUS UAB SOUTH GEORGIA AND SOUTH SANDWICH ISLANDS



Is South Georgia a small island? It is a remote and inhospitable collection of islands, consisting of South Georgia and a chain of smaller islands known as the South Sandwich Islands. South Georgia is 165 kilometres (103 mi) long and 35 kilometres (22 mi) wide and is by far the largest island in the territory.



What is the future of South Georgia & the South Sandwich Islands? The future management of South Georgia and the South Sandwich Islands For more than two centuries, exploitation of the wildlife of South Georgia and the South Sandwich Islands has provided revenue, albeit interrupted as serial overharvesting has destroyed stocks, in some instances taking species to the verge of extinction (see Introduction).



Should the South Georgia & South Sandwich Islands have a no-take marine area? Scientists and governments are calling for large no-take marine areas, free from industrial exploitation. The South Georgia and South Sandwich Islands Marine Protected Area is undergoing its second five-yearly review. Recovery of baleen whales coupled with climate change, means managers must be alert to alternative future ecosystem states.



Are South Georgia and the South Sandwich Islands mountainous? South Georgia and the South Sandwich Islands are a collection of islands in the South Atlantic Ocean. Most of the islands, rising steeply from the sea, are rugged and mountainous. At higher elevations, the islands are permanently covered with ice and snow.



What birds live on South Georgia Island? Birds unique to the archipelago are the South Georgia shag, South Georgia pipit, and the South Georgia pintail. Both South Georgia and the South Sandwich Islands have been identified as Important Bird Areas (IBA) by BirdLife International. Wikispecies has information related to South Georgia Island nonmarine fauna.

GREEN GENIUS UAB SOUTH GEORGIA AND SOUTH SANDWICH ISLANDS



Who owns South Georgia and the South Sandwich Islands? The United Kingdom claimed sovereignty over South Georgia in 1775 and the South Sandwich Islands in 1908. The territory of "South Georgia and the South Sandwich Islands" was formed in 1985; previously, it had been governed as part of the Falkland Islands Dependencies.



The ultimate goal of the Argentinian forces was to annex the South Sandwich Islands, South Georgia, and the Falklands. Despite these plans, however, the British moved in to re-take the territory, and on June 20, 1982, ???



Grytviken, South Georgia and the South Sandwich Islands - Climate and weather forecast by month. Detailed climate information with charts - average monthly weather with temperature, pressure, humidity, precipitation, wind, daylight, sunshine, visibility, and UV index data. Transitioning between excessive rainfall, the settlement experiences considerable ???



The future marine protection of South Georgia and the South Sandwich Islands has been a long-standing campaign for the APPG and our associate members, including the Pew Trusts, and featured in our recent "Keeping 1.5 alive" report, which sets out nine priorities for the forthcoming COP28 summit, which begins next week.

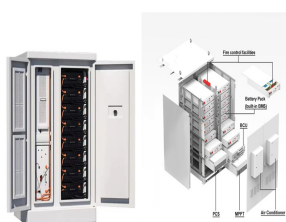


Winter, from June to August, brings extreme conditions to the South Georgia and the South Sandwich Islands. With average temperatures oscillating between -2°C (28.4°F) and 2°C (35.6°F), the islands experience intense cold, frequent snowstorms, and strong winds, with speeds reaching up to 40km/h (24.9mph).

GREEN GENIUS UAB SOUTH GEORGIA AND SOUTH SANDWICH ISLANDS



South Georgia and the South Sandwich Islands are a remote group of islands in the southeastern Atlantic Ocean, about 1000 kilometers east of South America. Officially, they belong to Scotland and are a British Overseas Territory. The islands are famous for their rich and diverse marine life. Here you can meet seals, penguins and other marine



South Georgia and the South Sandwich Islands. Published: September 2018. Citation: UNEP-WCMC. 2018, A review of terrestrial protected areas: South Georgia and the South Sandwich Islands. Cambridge, UK. The UN Environment World Conservation Monitoring Centre (UNEP-WCMC) is the specialist biodiversity assessment centre of



South Georgia and The South Sandwich Islands : Stamps : Years List : Colnect. Buy, sell, trade and exchange collectibles easily with Colnect collectors community. Only Colnect automatically matches collectibles you want with collectables collectors offer for sale or swap. Colnect collectors club revolutionizes your collecting experience!



The South Atlantic island of South Georgia, situated south of the Antarctic Convergence, was the first Antarctic territory to be discovered. [1] It was first visited in 1675 by Antoine de la Roch?, an English merchant born in London to a French father. [2] He left Hamburg in 1674 as a passenger on a 350-ton vessel bound for Peru. [3] During the return journey, it was en route to Salvador in ???



OverviewHistoryLanguagesGeographyClimateGovernmentEconomyEcology

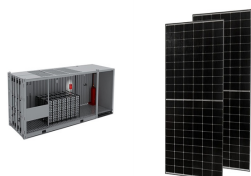
GREEN GENIUS UAB SOUTH GEORGIA AND SOUTH SANDWICH ISLANDS



Grytviken - One of several former whaling stations in South Georgia. Understand . South Georgia and the South Sandwich Islands are rugged islands, rising out of the Southern Ocean. There are no indigenous residents, very few people live here and only those who really want to make the trip end up coming.



S?d Georgien und die S?dlichen Sandwichinseln (von der Inselregierung verwendete Abk?rzung SGSSI [1]) sind ein britisches ?berseegebiet im S?datlantik, das aus S?d Georgien und den S?dlichen Sandwichinseln besteht. Die Inseln sind 3677 km vom S?dpol entfernt. Da sie n?rdlich des 60. Breitengrades s?dlicher Breite liegen, fallen sie nicht in den Anwendungsbereich des ???



The government of South Georgia and South Sandwich Islands took further steps in 2018 after an environmental review to fully protected 23% of its waters. However, the rest of the area remained open to industrial fishing, which would disrupt food availability and the interconnected food web. Additionally, since the 2018 review, the impacts of



Travel Green List; News; Your full Wanderlust guide to South Georgia and South Sandwich Islands. South Georgia and South Sandwich Islands . Related guides. All destinations . Destination . Svalbard . Inspiration . Outdoors & Walking



With 11 main islands and several smaller islets, the South Sandwich Islands are also part of the South Georgia British Overseas Territory, despite lying around over 700-kilometres southeast. Volcanic in origin, this island chain is incredibly inhospitable and consists of numerous perilous peaks, some of which remain active while others are snow-capped and heavily glaciated.

GREEN GENIUS UAB SOUTH GEORGIA AND SOUTH SANDWICH ISLANDS



South Georgia is inhabited by less than 50 people and leaving no trace is a guiding principle. Most expeditions will not visit the sandwich islands group due to their remoteness. The Sandwich Islands are uninhabited and further southeast from South Georgia.



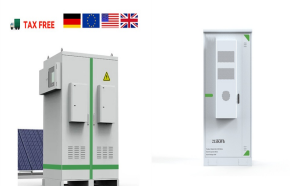
in South Georgia and the South Sandwich Islands ??? ??? 2 ?C Die Durchsage kommt 10 min fr?her als sonst, da ein Buckelwal gesichtet wurde. Steigen mit halb offenen Augen in die Klamotten um kurz darauf mit Kameras auf das Meer zu sp?hen.



Find the travel options from Nearby airports to South Georgia and the South Sandwich Islands that best suit you. Rome2Rio. Airports near South Georgia and the South Sandwich Islands. Find Transport to South Georgia and the South Sandwich Islands. Travel from. To. See all options. Search accommodation with Expedia. Duration: 1h 45m:



The Office of the Commissioner of South Georgia and the South Sandwich Islands based in Stanley, Falkland Islands deals with all requests for consular assistance. Documents Our announcements



1 South Georgia Island is the only inhabited island, with the summer-only settlement of Grytviken, and the only one regularly visited by cruise ships. Minor islands are ranged along its north coast ??? those visited by cruises are Willis, Bird, Albatross and Prion, and Cooper. The south coast is exposed to raging winds and waves and is seldom visited ??? Annenkov is the only large island ???

GREEN GENIUS UAB SOUTH GEORGIA AND SOUTH SANDWICH ISLANDS



South Georgia South Georgia and its associated smaller offshore islands, islets and stacks lie between the parallels of 53°00'S and 55°00"S, and between the meridians of 34°30'W and 42°00'W. These islands are very isolated, lying about 870 miles (1,400 km) east-south-east of the Falkland Islands, 963 miles (1,550 km) north-east of



South Georgia and the South Sandwich Islands Cruises to Antarctica, Polar Travel With Cool Antarctica and Antarctica Travels Notes * Prices are per person. the lowest price is usually for triple occupancy in a basic cabin, the highest for ???

114KWh ESS



1. South Georgia is not part of Antarctica. South Georgia and the South Sandwich Islands are a chain of sub-Antarctic islands in the Southern Ocean. They are located more than 2,000km from the continent of Antarctica but the reason many people associate the two is that many cruises to Antarctica also stop by South Georgia.. 2.



The island of South Georgia is unusual among oceanic islands for having pre-Cretaceous sedimentary rocks underlying much of the island and a significant portion of felsic igneous rocks. Two-thirds of the island consists of intensely folded flysch, capped with Aptian age fossils, tuff and greywacke in the Cumberland Bay Series.