

GRID-CONNECTED PHOTOVOLTAIC INVERTER PRINCIPLE EXPLANATION



What is the working principle of photovoltaic grid-connected inverter? 1. Working principle of photovoltaic grid-connected inverter When the public power grid is powered off, the power grid side is equivalent to a short-circuit state. At this time, the grid-connected inverter will be automatically protected due to overload.



How PV Grid connected inverter works? Before the pv grid connected inverter is connected to the grid for power generation, it needs to take power from the grid, detect the parameters such as voltage, frequency, phase sequence, etc. of the grid power transmission, and then adjust the parameters of its own power generation to be synchronized with the grid electrical parameters.



What is grid-connected inverter? The grid-connected inverter converts the AC generated by solar panels into AC that can be directly divided into the power grid through power electronic conversion technology. Let's understand the working principle of the photovoltaic grid-connected inverter and its role in photovoltaic power generation system. 1.



What is a grid connected photovoltaic system? Diagram of grid-connected photovoltaic system . The inverter, used to convert photovoltaic dc energy to ac energy, is the key to the successful operation of the system, but it is also the most complex hardware.



Can grid-connected PV inverters improve utility grid stability? Grid-connected PV inverters have traditionally been thought as active power sources with an emphasis on maximizing power extraction from the PV modules. While maximizing power transfer remains a top priority, utility grid stability is now widely acknowledged to benefit from several auxiliary services that grid-connected PV inverters may offer.

GRID-CONNECTED PHOTOVOLTAIC INVERTER PRINCIPLE EXPLANATION



Why do PV inverters need to be disconnected from the grid? For security reasons, the PV grid-connected inverters must be disconnected from the grid when the utility is disabled or out of operation. Once the grid is out, the PV system is operating in islanding mode, and this mode must be detected to shut off the system and separate it from the utility.



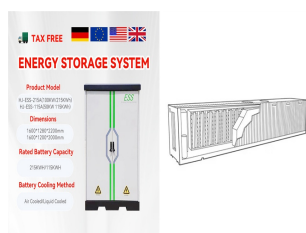
Nowadays, the grid-connected PV inverters are designed using the soft switching technique in order to achieve high power density, high efficiency, and better performance. Serious EMI problems and switching losses are caused by abrupt variation in switch currents and voltages. According to separation principle, these two controllers can be



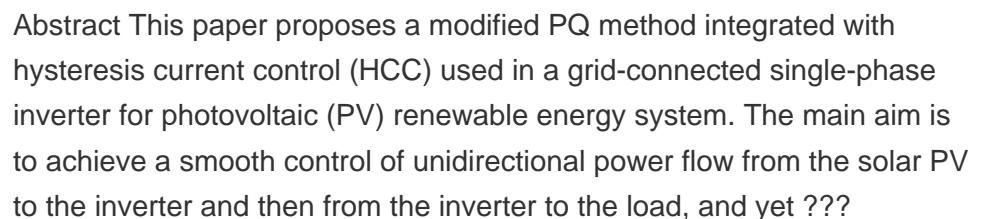
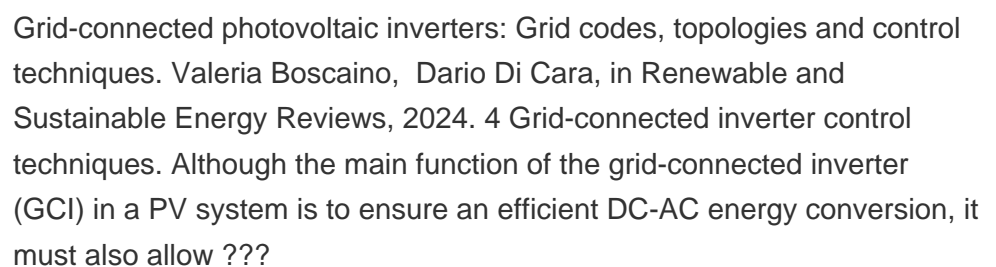
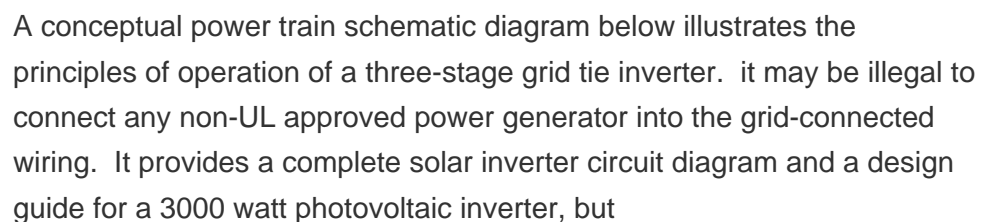
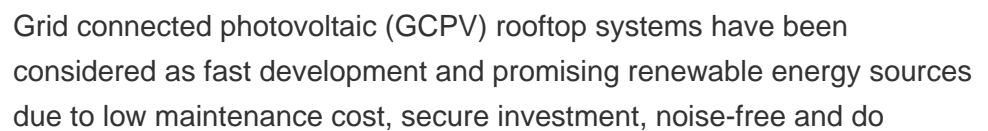
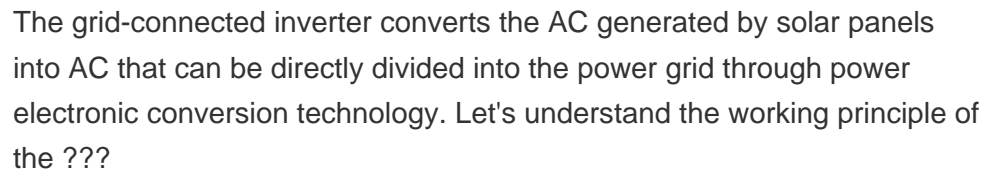
Grid-tied solar systems. Grid-tied systems are solar panel installations that are connected to the utility power grid. With a grid-connected system, a home can use the solar energy produced by its solar panels and electricity that comes from the utility grid. If the solar panels generate more electricity than a home needs, the excess is sent to the grid.



Understanding On-Grid Solar Systems. On-grid solar systems, also known as grid-tied or grid-connected systems, are connected directly to the local utility grid. This means that electricity generated by the solar panels can be used to power your home or business, while any excess electricity can be fed back into the grid for others to use.



The Conventional grid-connected PV inverter was either with DC/DC converter or without DC/DC converter. These inverters were isolated using a transformer either on the grid (AC) side as a low-frequency transformer or as a high-frequency transformer on the DC side. Elimination of the transformer leads to a galvanic



GRID-CONNECTED PHOTOVOLTAIC INVERTER PRINCIPLE EXPLANATION



Grid-connected PV inverters need to synchronize their output with the utility and be able to disconnect the solar system if the grid goes down. (1) A system that is designed to supplement grid power and not replace it at any time does not ???



Grid-connected photovoltaic systems are composed of photovoltaic panels connected to the grid via a DC-AC inverter with a maximum power tracker (MPPT) and a permanent controller of the power injected, a bidirectional interface between the AC output circuits of the PV system and the grid, the main electricity grid and the DC and AC loads as well as the ???



This review focuses on inverter technologies for connecting photovoltaic (PV) modules to a single-phase grid. The inverters are categorized into four classifications: 1) the ???



Types of Inverters. There are several types of inverters that might be installed as part of a solar system. In a large-scale utility plant or mid-scale community solar project, every solar panel might be attached to a single central inverter. String inverters connect a set of panels ??? a string ??? to one inverter. That inverter converts the power produced by the entire string to AC.



The total extracted power from PV strings is reduced, while the grid-connected inverter injects reactive power to the grid during this condition. One of the PV strings operates at MPP, while another PV string is open-circuited to reduce its power to zero. Sag II: It consists of a three-phase voltage sag of 70%, as shown in Fig. 10a.

GRID-CONNECTED PHOTOVOLTAIC INVERTER PRINCIPLE EXPLANATION



Al-shetwi et al. Grid-connected inverters can be of various topologies and configurations including transformer-based and transformerless, for Photovoltaic (PV) systems, they can be string inverters, central inverters, multi-string inverters, etc. Further, there come numerous configurations under transformerless inverters including H-Bridge inverter, highly ???



The working principle of the solar PV cells is illustrated in Fig. Non-isolated PV inverters can be further divided into single-stage and multi-stage types, and multi-stage PV grid-connected inverters are mainly based on the two-stage type. Two-stage grid-connected control system, the front stage uses DC/DC converter to improve the voltage



Grid-connected PV inverters have traditionally been thought as active power sources with an emphasis on maximizing power extraction from the PV modules. While maximizing power transfer remains a top priority, utility grid stability is now widely acknowledged to benefit from several auxiliary services that grid-connected PV inverters may offer.



At present, photovoltaic (PV) systems are taking a leading role as a solar-based renewable energy source (RES) because of their unique advantages. This trend is being increased especially in grid-connected applications because of the many benefits of using RESs in distributed generation (DG) systems. This new scenario imposes the requirement for an ???



GRID-CONNECTED POWER SYSTEMS SYSTEM DESIGN GUIDELINES Whatever the final design criteria a designer shall be capable of: ???Determining the energy yield, specific yield and performance ratio of the grid connect PV system. ???Determining the inverter size based on the size of the array. ???Matching the array configuration to the selected

GRID-CONNECTED PHOTOVOLTAIC INVERTER PRINCIPLE EXPLANATION



Grid-connected photovoltaic systems are designed to operate in parallel with the electric utility grid as shown. There are two general types of electrical designs for PV power systems: systems that interact with the utility power grid as shown in Fig. 26.15a and have no battery backup capability, and systems that interact and include battery backup as well, as ???



This paper gives an overview of previous studies on photovoltaic (PV) devices, grid-connected PV inverters, control systems, maximum power point tracking (MPPT) control strategies, switching devices and transformer-less inverters. The literature is classified based on types of PV systems, DC/DC boost converters and DC/AC inverters, and types of controllers ???



The two principle classifications are grid-connected or utility-interactive systems and stand-alone systems. The full explanation of this topic exceeds the purpose of this article but expert people will understand concepts such as level of doping, type of dopant, intrinsic and extrinsic properties of the semiconductor or whether it is



Photovoltaic grid-connected power generation systems are easily affected by external factors, and their anti-interference performance is poor. For example, changes in illumination and fluctuations in the power grid affect the operation ability of the system. Linear active disturbance rejection control (LADRC) can extract the "summation disturbance" ???



Hardware model for 5 kW grid connected solar PV inverter was developed as shown in figure 6 and figure 7. This hardware setup was tested for its functionality at different irradiance by using PV simulator. Fig. 6. 5 kW grid tied solar inverter panel ???

GRID-CONNECTED PHOTOVOLTAIC INVERTER PRINCIPLE EXPLANATION



of Grid-Connected Photovoltaic Inverter Based In this paper, an improved linear ADRC based on the principle of deviation control is proposed, and the voltage outer loop is controlled by an



Below we detail the characteristics and functions that each of the main components of a grid-connected solar PV system must have: Solar panels: function, types, and characteristics and injected into the grid for



For controlling single-phase inverters connected to the grid, using inverter voltage regulation principles using PWM signal modulation techniques, the research team focused on inverter controls the distribution of active and reactive power. to the grid, resulting in almost unity of the power factor in the system.



A GTI or grid-tied inverter is connected to solar panels for converting direct current (DC) generated by solar panels into alternating current (AC). A grid system works without batteries and grid-tied inverters can be



This paper presents a grid-connected PV system in a centralized configuration constructed through a three-phase dual-stage inverter. For the DC-DC stage the three-phase series resonant converter is chosen thanks to the advantages that it exhibits. In a single-stage inverter, this principle can also be used. Figure 9 presents the proposal

GRID-CONNECTED PHOTOVOLTAIC INVERTER PRINCIPLE EXPLANATION



paper reviews the inverter performance in a PV system that is integrated with a power distribution network (i.e., medium to low voltage), or we called it grid-connected PV system. Since the PV system is connected to the public grid, then the inverter eventually called "grid-tie inverter" (GTI).



Grid connected PV systems always have a connection to the public electricity grid via a suitable inverter because a photovoltaic panel or array (multiple PV panels) only deliver DC power. As well as the solar panels, the additional components that make up a grid connected PV system compared to a stand alone PV system are: