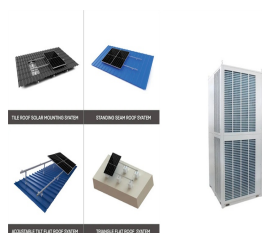


# GUATEMALA SWIRE RENEWABLE ENERGY



increase the use of renewable energy in its buildings through on-site renewable energy generation, purchase of off-site renewable energy supplied externally and other methods where applicable; (j) engage tenants to improve the energy efficiency of their premises in order to reduce the carbon footprint of the Company's buildings. 3.



Swire Renewable Energy ranks 14th among 125 active competitors. 2 of its competitors are funded while 19 have exited. Overall, Swire Renewable Energy and its competitors have raised over \$18.3M in funding across 7 funding rounds involving 6 investors. There is 1 public and 18 acquired companies in the entire competition set.



Swire Energy Services | 32 657 f?lgere p? LinkedIn. Supporting the Global Energy Industry with over 40 years experience | Swire Energy Services is a global provider of services supporting the energy industry. Operating in 30 countries and employing over 750 staff globally, people are at the centre of our business. We provide a wide range of value and performance driven solutions ???



One of our 2020 KPIs is to generate 2 to 4% of landlord's building energy from renewable energy sources in selected new office developments. At One Taikoo Place, we installed solar PV panels and a waste-to-energy tri-generation system, which is estimated to supply renewable energy equivalent to approximately 2% of landlord's building energy.

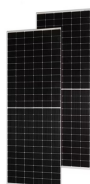


Swire Renewable Energy has purchased Obelisk to consolidate its business in South Africa and establish a footprint in the Irish renewable services sector. Obelisk's renewable services businesses are leading suppliers of high-quality maintenance, testing and support services based in Capetown, South Africa. Obelisk has supported more than 200

# GUATEMALA SWIRE RENEWABLE ENERGY



Swire Renewable Energy explained in a press statement that the acquisition will substantially widen its blade repair and maintenance capabilities and increase its capacity in blade-related services to include all blade service, maintenance and predictive analysis solutions.



Swire Renewable Energy will retain a strong focus on quality, efficiency and on decarbonising the energy sector, while striving to become the renewable energy asset manager of choice by pursuing



Experienced international IT executive, 20+ years as manager and Director.& It;br>gt;Worked??? ? Erfaring: Swire Renewable Energy ? Uddannelse: Niels Brock ? Beliggenhed: Hadsten ? 500+ forbindelser p? LinkedIn. Se Flemming Kristensen s profil p? LinkedIn, et professionelt faellesskab med 1 milliard medlemmer.



One of our 2025 KPIs is to generate 4-6% of the landlord's building energy from renewable or clean energy sources in selected new office developments. At Two Taikoo Place, we will install solar PV panels, a wind turbine and a waste-to ???



Swire Renewable Energy explained in a press statement that the acquisition will substantially widen its blade repair and maintenance capabilities and increase its capacity in blade-related services to include all blade service, ???



Swire Energy Services | 33,037 followers on LinkedIn. Supporting the Global Energy Industry with over 40 years experience | Swire Energy Services is a global provider of services supporting the energy industry. Operating in 30 countries and employing over 750 staff globally, people

# GUATEMALA SWIRE RENEWABLE ENERGY

---

are at the centre of our business. We provide a wide range of value and performance driven solutions ???

# GUATEMALA SWIRE RENEWABLE ENERGY



Renewable energy is an integral part of Swire Properties' decarbonisation journey. As we strive to meet our SD 2030 Strategy targets in a changing world, we are encountering new challenges, such as changing government regulations and limited renewable energy sources that are coming under increased demand from other companies trying to meet



As our capacity to generate renewable energy at our properties increases, there is a growing need to explore more efficient ways to utilise the energy produced. Swire Properties' cloud-based Smart Energy Management Platform ("CBSEMP") was launched in 2019 and is being rolled out in phases. Utilising IoT, big data analysis, AI, and



The government of Guatemala has introduced a plan to increase renewable generation capacity, while an estimated 76% of Guatemalans are energy poor. In this paper, we evaluate the trade-offs between alleviating energy poverty and achieving renewable energy goals in ???



Experienced finance leader with more than 20+ years international experience looking for??? ? Erfaring: Swire Renewable Energy ? Uddannelse: IMD Business School ? Beliggenhed: Aarhus ? 500+ forbindelser p? LinkedIn. Se Flemming Andersen s profil p? LinkedIn, et professionelt faelleskab med 1 milliard medlemmer.



Renewable energy here is the sum of hydropower, wind, solar, geothermal, modern biomass and wave and tidal energy. Traditional biomass ??? the burning of charcoal, crop waste, and other organic matter ??? is not included. This can be an important energy source in lower-income settings. Guatemala: Energy intensity: how much energy does it

# GUATEMALA SWIRE RENEWABLE ENERGY



Denmark's Swire Renewable Energy A/S (SRE) has acquired Obelisk Energy Services Limited, a South African provider of services to the renewable energy sector, marking its second inorganic growth investment within a week. Installation and maintenance of solar panels. Source: Obelisk Energy Services Limited.



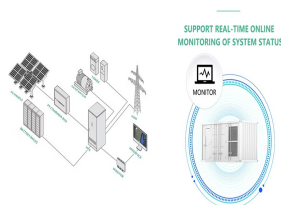
Swire Properties is pleased to announce that its Sino-Ocean Taikoo Li Chengdu development in Sichuan Province is now powered by 100 per cent renewable electricity, making Swire Properties one of the first companies in Sichuan to achieve "net zero carbon" in its annual electricity consumption for landlord's and tenants' operations in 2020.



Renewable heat. Renewables also have an important role in providing heat for buildings and industrial processes. To achieve decarbonisation and energy saving objectives, many countries are encouraging individual homes and buildings to ???



Swire Renewable Energy has agreed to acquire Rope Access Sverige AB, a Sweden-based wind turbine blade repair and maintenance specialist operating in Europe and the UK. The acquisition significantly enhances SRE's blade repair and maintenance division, and further expands SRE's footprint in Europe, particular the Nordics. Ryan Smith



Coordinator at Swire Renewable Energy ? Inquisitive and hardworking, permanently searching ways to develop and reach new goals, being self-motivated and ambitious. Resourceful, creative and able to motivate others with enthusiasm and interpersonal skills, has been capable, with a positive attitude, to empathize in a high pressured environment, such as working in a busy ???

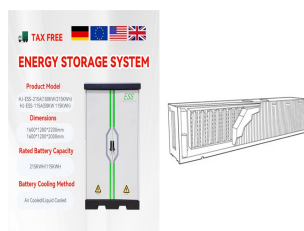
# GUATEMALA SWIRE RENEWABLE ENERGY



This collaboration between Swire Properties and engineering firm Arup aiming to transform building operations at One Taikoo Place was awarded Silver at the 2019 Hong Kong Green Innovations Awards. [READ MORE.](#) Renewable Energy. In 2020, Sino-Ocean Taikoo Li Chengdu became powered by 100% renewable electricity, achieving "net zero carbon" in



Mechanical Engineer at Swire Renewable Energy ? Mechanical engineer with experience in preparation and delivery of high quality O& M projects in offshore wind industry. ? Erfaring: Swire Renewable Energy ? Uddannelse: Aarhus University ? Beliggenhed: Aarhus ? 222 forbindelser p? LinkedIn. Se Oskar Sidor s profil p? LinkedIn, et professionelt faelleskab med 1 milliard ???



Primary energy trade 2016 2021 Imports (TJ) 249 795 307 441 Exports (TJ) 38 258 25 003 Net trade (TJ) - 211 537 - 282 438 Imports (% of supply) 46 42 Exports (% of production) 11 5 Energy self-sufficiency (%) 66 68 COUNTRY INDICATORS AND SDGS TOTAL ENERGY SUPPLY (TES) Total energy supply in 2021 Renewable energy supply in 2021 Guatemala 28% 6%



People for SWIRE RENEWABLE ENERGY LIMITED (06797099) More for SWIRE RENEWABLE ENERGY LIMITED (06797099) Registered office address Swire House, 59 Buckingham Gate, London, United Kingdom, SW1E 6AJ . Company status Active Company type Private limited Company Incorporated on 21 January 2009



Experienced wind professional with a demonstrated history of working in the renewables??? ? Erfaring: Swire Renewable Energy ? Beliggenhed: Aarhus ? 500+ forbindelser p? LinkedIn. Se Hanne Fynbo s profil p? LinkedIn, et professionelt faelleskab med 1 milliard medlemmer.