

# HANCHU ESS BATTERY U S VIRGIN ISLANDS

---



What is a hanchu ESS battery? Hanchu Ess Is The Uk's First Battery To Benefit From Blade Lithium Cells. The Highest Charge & Discharge Rates From A Single Battery With 95% DoD! Lux Power AC, coupled with the innovative 9.4kWh Hanchu ESS Blade Lithium Battery, represents a significant advancement in home Battery Storage systems, leading to greater energy independence.



What is a hanchu battery? The Hanchu 5.12kWh Lithium Battery is designed for home energy storage, providing reliable power for various applications. Here's a consumer-friendly overview of its key features: Fire Suppression: The Hanchu 5.12kWh battery is number one in terms of safety.



What is hanchu home energy storage? Hanchu home energy storage solution employs advanced battery technology to intelligently manage and optimize your energy use, serving as a reliable backup during outages and saving costs through smart scheduling during peak electricity demand.



How many batteries can a hanchu battery storage system hold? Our versatile Hanchu 9.4kW Blade Lithium battery storage systems offer flexibility in both supply and installation, accommodating anywhere from 1 to 8 batteries. Many of our valued customers initially opt for a 1 or 2 battery system due to their specific needs and budget considerations.



Who is hanchu ESS? Hanchu Ess is an established manufacturer of renewable technologies and battery storage solutions, and their domestic and commercial battery solutions are distributed globally with a very strong market share.

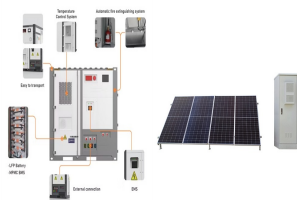
# HANCHU ESS BATTERY U S VIRGIN ISLANDS



What is hanchu & lux power AC battery storage system? Hanchu &Lux Power AC battery storage system is fully automatic with Octopus Energy and their tariffs, and because of its high charge & discharge rates, you can ensure that you are always benefiting from the maximum energy you have access to.



DATA SHEET USER MANUAL QUICK INSTALLATION GUIDE HANCHU ESS - 9.4KWH LOW VOLTAGE BATTERY - [CLICK HERE FOR FEATURES](#) 12 Years Warranty On All Hanchu Products. Call Us On 01527 962 968. Email Us [info@powerland.uk](mailto:info@powerland.uk). Where to Find Us Unit 3, Adams Way Springfield Business Park Alcester, Warwickshire, B49 6PU. More Information. ???



Please contact Hanchu ESS after-sales service VoltSensor Fault Battery voltage sensor failure. company or your dealer directly. Battery temperature sensor Page 34: Battery Maintenance HOME-ESS-LV-5.12K Battery Maintenance 6.1 Battery Storage Requirements The battery is required to be stored in a temperature range from 0°C to +40°C.



HOME-ESS-LV-5.12K A cutting-edge 5.12kWh energy storage solution designed for seamless installation and smart management. With its ultra-thin profile and intelligent automatic addressing, setup is a breeze. Enjoy 24/7 real-time monitoring, remote diagnostics, and easy configuration through the user-friendly APP/Platform. The Power Partner excels in performance, boasting a ???



Hanchu ESS Co.,Ltd. 1K+ Downloads. Everyone. info. Install. Share. Add to wishlist. About this app. [arrow\\_forward](#). Hanchu Ess is a battery monitoring system supporting Hanchu Battery device by Hanchu Logger, which can carry out remote management, real-time data view and historical traceability of the Battery, ensure the safe operation of the

# HANCHU ESS BATTERY U S VIRGIN ISLANDS



Incorporates a thermal aerosol that can quickly control fires, reduce the likelihood of fire spread, and minimize damage caused by fire. The breathing explosion-proof valve enhances system safety by effectively preventing an increase in internal battery pressure, reducing the risk of fire and explosion, ensuring the safety of both equipment and environment.



If the battery has been down for a long time and does not work, it is necessary to maintain and recharge the battery in time according to subsections 6.2 and 6.3 of this manual. 4.6.3 Inverter Protocol Selection  
The battery default factory CAN communication is Hanchu ESS protocol and RS485 communication is SRNE protocol.



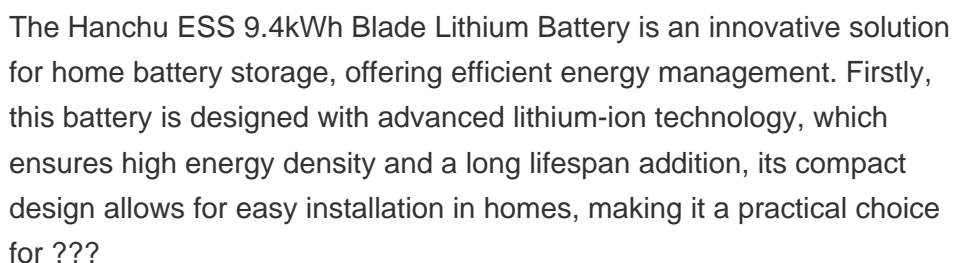
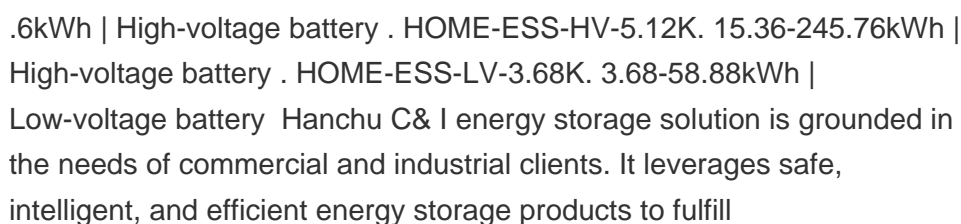
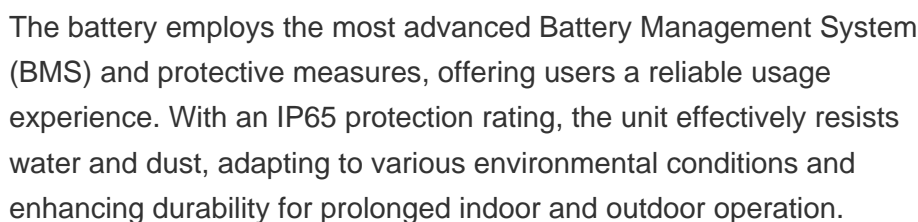
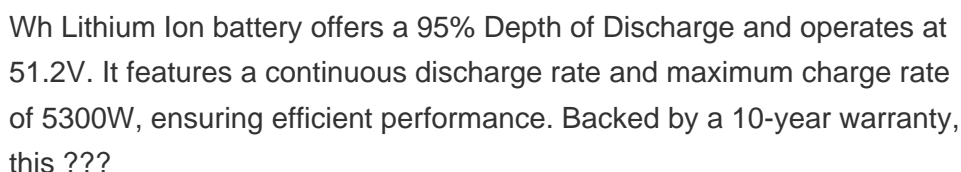
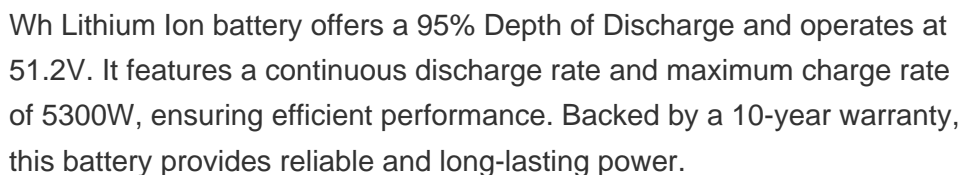
AC RETRO BATTERY SYSTEMS. Hanchu ESS 3.68kW AC Retro Fit Battery System; Hanchu ESS 5.0kW AC Retro Fit Battery System; Hanchu ESS 6.0kW AC Retro Fit Battery System; Lux Power AC Retro Fit. Lux Power AC ??? Uhome 2.4kWh; Lux Power AC ??? Hanchu 3.2kWh; LUX Power 3.68kW AC Battery Storage ??? Hanchu Ess 5.12kWh; Lux Power AC ??? Hanchu 9.4kWh



Here at The Renewables Centre, we are thrilled to unveil the latest addition to our lineup of cutting-edge battery storage solutions???the Hanchu Ess 9.4KW Blade LFP battery. With a rich history of pioneering advancements in the battery storage industry, we have consistently introduced game-changing products to the UK domestic market.



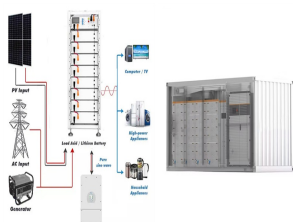
View and Download HANCHU ESS HESS Series user manual online. Off-Grid Inverter. HESS Series inverter pdf manual download. Also for: Hess-of-s-5.0k. 1. Photovoltaic module: convert the light energy into direct current energy and then charge the battery via the all-in-one machine, or directly invert the light energy into alternating current



# HANCHU ESS BATTERY U S VIRGIN ISLANDS



ABOUT US; CONTACT | | EN EN; CN; Residential Energy Storage Products. Three Phase Series; It can protect your HANCHU Battery in the whole life cycle safe and stable operation, and it is safer, more intelligent, more caring, and it ???



HOME-ESS-HV-5.12K. 15.36-245.76kWh | High-voltage battery .  
HOME-ESS-LV-3.68K. 3.68-58.88kWh | Low-voltage battery perfectly compatible with the Hanchu LV series batteries. It includes multiple power options of 3/3.68/4/5/6kW, catering to various scales and application scenarios. It can adapt to various lighting conditions and battery



The Hanchu ESS 9.4kW 48V Lithium Battery offers exceptional safety and reliability with top-quality LFP cells. It features rapid charge and discharge capabilities of 100A, a 95% Depth of Discharge, and a compact modular design for easy installation. Smart management allows 24/7 real-time monitoring and remote configuration via an app. Specifications include an operating ???



Battery: HOME-ESS-HV-2.7K; HANCHU iESS; Powerful Performance. A high-voltage system can deliver greater output power, providing stronger power for household loads. Touchscreen Display. Real-time display of battery operational data, with parameters set through an industry-leading touchscreen for an enhanced human-machine interaction experience.



HOME-ESS-HV-5.12K. 15.36-245.76kWh | High-voltage battery .  
HOME-ESS-LV-3.68K We utilize cutting-edge battery technology to help you store and optimize the use of solar energy. helps you save on costs during peak electricity usage. Once connected to the Hanchu Cloud platform, you can effortlessly monitor and control the system with your

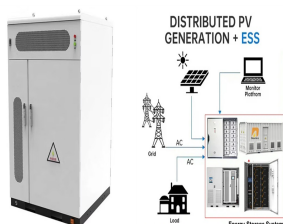
# HANCHU ESS BATTERY U S VIRGIN ISLANDS



.6kWh | High-voltage battery . HOME-ESS-HV-5.12K. 15.36-245.76kWh |  
 High-voltage battery . HOME-ESS-LV-3.68K. 3.68-58.88kWh |  
 Low-voltage battery . It supports multi-unit parallel operation and is perfectly compatible with the Hanchu HV series batteries, offering high-power energy output to provide stable electricity for loads.



When paralleled, HOME-ESS-LV-5.12K can withstand a maximum current of 220A in the main circuit, allowing for faster response to power demands, adaptation to a wider range of applications, and eliminating the need for a combiner box installation.



AC RETRO BATTERY SYSTEMS. Hanchu ESS 3.68kW AC Retro Fit Battery System; Hanchu ESS 5.0kW AC Retro Fit Battery System; Hanchu ESS 6.0kW AC Retro Fit Battery System; Lux Power AC Retro Fit. Lux Power AC ??? Uhome 2.4kWH; Lux Power AC ??? Hanchu 3.2kWH; Lux Power AC ??? Hanchu 9.4kWH; Lux Power Squirrel Pod Systems. Lux Power Squirrel Pod



The HESS-OF-S series is a single-phase off-grid inverter designed specifically for residential homes. It is compatible with the Hanchu LV series batteries, allowing users to flexibly configure the system capacity for more versatile energy storage and management. This enables it to meet the requirements of various scales and application scenarios.