

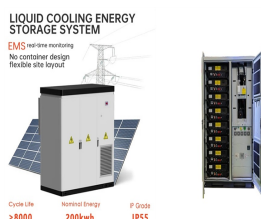
HARMONIOUS ENERGY STORAGE BRAKE PLUG DOOR CODE



C402.4.5 Doors. Opaque swinging doors shall comply with Table C402.1.4. Opaque nonswinging doors shall comply with Table C402.1.3. Opaque doors shall be considered as part of the gross area of above-grade walls that are part of the building thermal envelope. Other doors shall comply with the provisions of Section C402.4.3 for vertical fenestration.



for Energy Storage Research at the US Department of Energy's (DOE) Office of Electricity Delivery and Energy Reliability (OE), a Workshop on Energy Storage Safety was held February 17-18, 2014 in Albuquerque, NM. The goals of the workshop were to: 1) bring together all of the key stakeholders in the energy storage community,



Fire codes and standards inform energy storage system design and installation and serve as a backstop to protect homes, families, commercial facilities, and personnel, including our solar-plus-storage businesses. ESS installed outdoors may not be within 3-feet of doors and windows. Note that ESS units may not be installed in living areas or

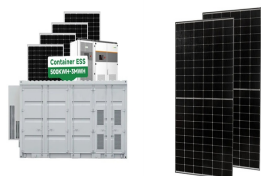


This is a fully integrated code based on the 2018 International Energy Conservation Code(R) Warehouse (storage and retail), gymnasium, auditorium, church chapel, arena, kennel, manufacturing plant, indoor swimming pool, pump station, water and waste water treatment facility, storage facility, storage area, motor vehicle service facility



Please enter a five-digit zip code. See local prices . 100% free to use, 100% online While they may be cheaper than energy storage systems, plug-in batteries are still an investment ??? so you want to make sure your investment is protected! Warranty terms vary across plug-in batteries, ranging anywhere between two and ten years in length.

HARMONIOUS ENERGY STORAGE BRAKE PLUG DOOR CODE



It is found that the size of energy storage can be at the second time scale (for example, 6.8 p.u.??s) for VSM implementation, which is significantly smaller than the conventional hour-scale



>>Mineral Insulated Cable Light Duty >> Multi-Use Cable >> NYM-J Cable >> NYY-J Tuf Sheathed Cable >> Rubber HO7RN-F Cable >> SWA Split Concentric Cable >> SWA XLPE LSF Cable >> SWA XLPE PVC Armoured Cable >> Security Alarm Cable >> Single Core and Earth 6241Y Cable >> Singles LSF 6491B Cable



When it comes to creating a harmonious living space, many people turn to the ancient practice of Feng Shui. Feng Shui is an ancient Chinese art and science that focuses on balancing the energy, or chi, in our surroundings to promote positivity, well-being, and harmony. By applying Feng Shui principles to your home, you

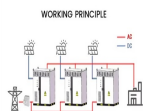


The MG HS Plug-In (2020) is a car model that offers a plug-in hybrid powertrain, combining an internal combustion engine with an electric motor for enhanced efficiency. This car is designed to be environmentally friendly, with reduced emissions and improved fuel economy compared to traditional petrol-only vehicles.



Our systems are plug-n-play ??? all of our systems come with load panel, BMS, Gateway, inversion ??? If you compare to similar systems in the industry (Tesla, LG Chem, Panasonic, General), you will have to add most of those components and end up 2-3 times the price of our systems. Our energy storage systems are built with the environment in mind.

HARMONIOUS ENERGY STORAGE BRAKE PLUG DOOR CODE



Energy storage connectors are a vital component of modern energy storage systems, playing a critical role in enabling the efficient transfer of energy between different parts of the system. As the world continues to shift towards renewable energy sources, the importance of these connectors is only set to grow.



Given the relative newness of battery-based grid ES technologies and applications, this review article describes the state of C& S for energy storage, several challenges for developing C& S ???



Ventura Systems was the first company to develop a Plug Sliding door system for heavy-duty transit buses. With 30 years of field experience from all over the. Skip to content +31515577750. Ventura Systems The Netherlands



Regenerative braking technology is essential for reducing energy consumption in electric vehicles (EVs). This study introduces a method for optimizing the distribution of deceleration forces in front-wheel-drive electric vehicles that complies with the distribution range outlined by ECE-R13 braking regulations and aligns with an ideal braking distribution curve. In addition, using a ???



If you love Roblox clicker experiences, also take a look at Anime Digging Simulator Codes. All Kick Door Simulator Codes List Kick Door Simulator Codes (Working) 50MVISIT???Redeem for 3k Gems (New) 250KLIKES???Redeem for 1 Spin, 2 Rainbow Energy Drink 10m consumable, and 1k Gems ; UPDATE12???Redeem for 10-min Shadow Drink and 2 ???

HARMONIOUS ENERGY STORAGE BRAKE PLUG DOOR CODE



Energy Plug is a publicly traded Canadian leader in innovative battery storage and delivery solutions, stabilizing power grids to meet the growing electricity demands across various sectors, including AI, data centers, electrified transportation, and residential communities. Our composable battery solutions and intelligent control software ensure reliable energy management while ???



This paper proposes a hierarchical sizing method and a power distribution strategy of a hybrid energy storage system for plug-in hybrid electric vehicles (PHEVs), aiming to reduce both the energy consumption and battery degradation cost. As the optimal size matching is significant to multi-energy systems like PHEV with both battery and supercapacitor (SC), ???



The AHJ shall be permitted to approve the hazardous mitigation analysis provided the consequences of the FMEA demonstrate the following: . Fires or explosions will be contained within unoccupied stationary storage battery system rooms for the minimum duration of the fire resistance rated specified in 52.3.2.1.3.1 or 52.3.2.1.3.2, as applicable; Fires and explosions in ???



You can also hang wind chimes or bells in the entryway to create a harmonious sound and promote positive energy flow. To truly enhance the energy in your entryway, it is important to keep it clean and well-maintained. A cluttered and unkempt entryway can block the positive energy and make it difficult for abundance to flow into your home.



This material is based upon work supported by the U.S. Department of Energy's Office of Energy Efficiency and Renewable Energy (EERE) under the Solar Energy and Technologies Office Award Number DE-EE0009001.0000. The views expressed herein do not necessarily represent the views of the U.S. Department of Energy or the United States ???

HARMONIOUS ENERGY STORAGE BRAKE PLUG DOOR CODE



Chapter 4 contains energy efficiency provisions for the building envelope, mechanical and water heating systems, lighting and additional efficiency requirements. A performance alternative, energy rating alternative, and tropical regional alternative are also provided to allow for energy code compliance other than by the prescriptive method.



Purpose of Review This article summarizes key codes and standards (C&S) that apply to grid energy storage systems. The article also gives several examples of industry efforts to update or create new standards to remove gaps in energy storage C&S and to accommodate new and emerging energy storage technologies. **Recent Findings** While modern battery ???



unaffected by DC-coupled energy storage battery circuit(s). If AC Coupled, ensure that the PV can be rapid shutdown either with a dedicated and listed device, or by loss of AC power from the grid and energy storage system. (CEC 705.40 and 706.8(C)) o Disconnecting Means ???
Interconnection Disconnect (CEC 705.21, 705.22, 110.25 and 706.7(A))



ONCE: Driver door **TWICE:** All doors All-door lock Touch Grasp Driver's door unlock* Push **NOTE:** If a door is not opened within 60 seconds of unlocking, all doors will relock for safety. Push and hold * Driver door unlocking function can be programmed to unlock driver door only, or all doors. Grasping passenger door handle will unlock all doors.



Power-Assist: Although some people call doors with low-energy operators "power-assist" doors, they are two different types of operators and the requirements of the codes and standards vary. A power-assist door has an operator that reduces the opening force but requires the door to be opened manually. A low-energy operator opens the door

HARMONIOUS ENERGY STORAGE BRAKE PLUG DOOR CODE



Efficient regenerative braking of electric vehicles (EVs) can enhance the efficiency of an energy storage system (ESS) and reduce the system cost. To ensure swift braking energy recovery, it is paramount to know the upper limit of the regenerative energy during braking. Therefore, this paper, based on 14 typical urban driving cycles, proposes the concept and ???



A wall receptacle outlet must be no more than 6 feet from a door at an interior wall, but there is no minimum distance. If the wall on either side of the door is 2 feet or less long, a receptacle is not required on the wall, but the length of the wall will be counted with the length of an adjoining connected wall towards the maximum allowed distance of 6 feet to a receptacle.



Plug Doors Collins Aerospace. The entry and exit doors you walk through when you board a modern pressurized airliner are known as plug doors, and a plug door literally plugs the opening it fits within.. To better understand plug doors, let's take a look at an aircraft door that isn't of a plug design. As illustrated below, the door may rely on a system of locks, cams, and ???



This report presents global best practices of codes, standards, and interconnection procedures developed to support the safe and reliable deployment of battery energy storage systems ???



This is a fully integrated code based on the 2018 International Energy Conservation Code(R) Any doorway, set of doors, revolving door, vestibule, or other form of portal that is ordinarily used to gain access to the building or to exit from the building by its users and occupants. FAN BRAKE HORSEPOWER (BHP). The horsepower delivered to