

# HEARD AND MCDONALD ISLANDS

## CONTAINER COM ENERGIA SOLAR



Where are Heard Island and McDonald Islands located? The islands are a territory (Territory of Heard Island and McDonald Islands) of Australia administered from Hobart by the Australian Antarctic Division of the Australian Department of Climate Change, Energy, the Environment and Water.



What's happening on Heard Island & McDonald Islands? Landing stores, Atlas Cove, Heard Island with Rogers Head in background Photo: Alan Campbell-Drury Due to the extreme isolation of Heard Island and McDonald Islands (HIMI), together with the persistently severe weather and sea conditions, human activities in the region have been, and remain, limited.



How big is Heard Island & McDonald Islands? The group's overall land area is 372 km<sup>2</sup> (144 sq mi) and it has 101.9 km (63 mi) of coastline. Discovered in the mid-19th century, the islands lie on the Kerguelen Plateau in the Indian Ocean and have been an Australian territory since 1947. Heard Island and McDonald Islands contain Australia's only two active volcanoes.



What is the difference between Heard Island and McDonald Island? Heard Island - 80% ice-covered, bleak and mountainous, dominated by a large massif (Big Ben) and an active volcano (Mawson Peak); McDonald Islands - small and rocky fish Mawson Peak, an active volcano, is on Heard Island



Does Heard Island have a harbour? Heard Island and the McDonald Islands have no ports or harbours; ships must anchor offshore. The coastline is 101.9 km (63.3 mi) in extent, and a 12 nmi (22 km) territorial sea and 200 nmi (370 km) exclusive fishing zone are claimed. [2]

# HEARD AND MCDONALD ISLANDS CONTAINER COM ENERGIA SOLAR



Is Heard Island a subantarctic island? The fauna of the freshwater pools, lakes, streams and mires found in the coastal areas of Heard Island are broadly similar to those on other subantarctic islands of the southern Indian Ocean. Many species reported from Heard Island are found elsewhere.



? 1/4 ? Heard Island? 1/4 ?, 3800, 2000, 40, ??? 1953, ??? 1997 ??????????  
???



Satellitbild av sydspetsen av Heard Island. Kap Arkona ses p? v?nster sida av bilden, med Lied Glacier strax ovanf?r och Gotley Glacier strax nedanf?r. Big Ben Volcano och Mawson Peak ses l?ngst ned till h?ger p? bilden. Heard- och McDonald?arna, Heard and McDonald Islands, ?r en obebodd australisk ?grupp i s?dra Indiska oceanen.



Secondo una proposta del governo federale, le acque protette intorno a Heard e McDonald - un gruppo remoto di isole subantartiche a 4.000 chilometri a sud-ovest del Western Australia - dovrebbero

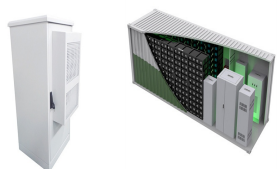


Commonwealth of Australia since 1953. The Heard Island and McDonald Islands Act 1953 provides the legislative basis for the Territory's administration. Administration of the Territory is the responsibility of the Australian Government department that administers the Heard Island and McDonald Islands Act 1953. This responsibility has

# HEARD AND MCDONALD ISLANDS CONTAINER COM ENERGIA SOLAR



Heard & McDonald Islands Postcodes, ZIP Codes, Postal Codes information, The Heard & McDonald Islands is a country primarily located in Antarctica, The capital is Canberra. The numeric is 334 and dial code is +672. The postal system name in the country is Postcode, You can find out the postal code of each region from our website. We provide postal codes for 2 ???



The Territory of Heard Island and McDonald Islands (HIMI) is an Australian external territory comprising a volcanic group of mostly barren Antarctic islands, about two-thirds of the way from Madagascar to Antarctica. The group's overall size is 372 km<sup>2</sup> (144 sq mi) in area and it has 101.9 km (63 mi) of coastline. Discovered in the mid-19th century, the islands lie on ???

TAX FREE



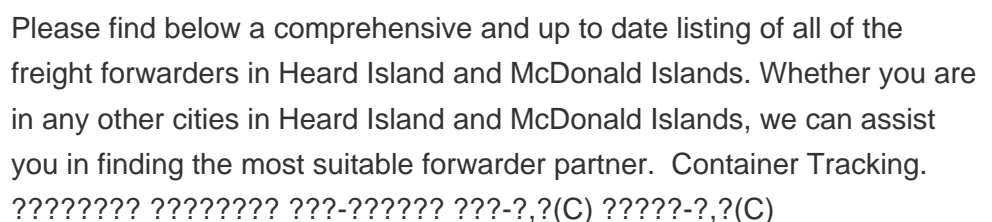
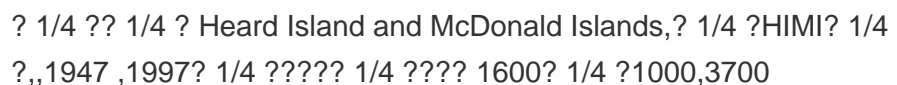
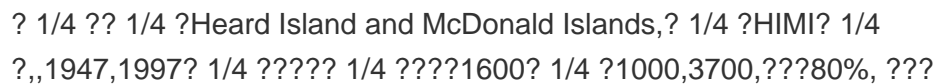
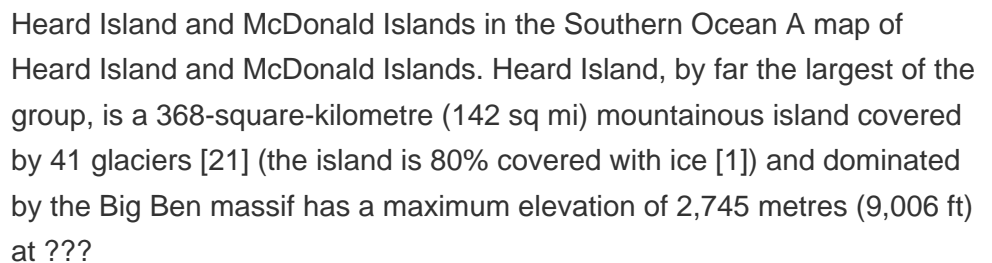
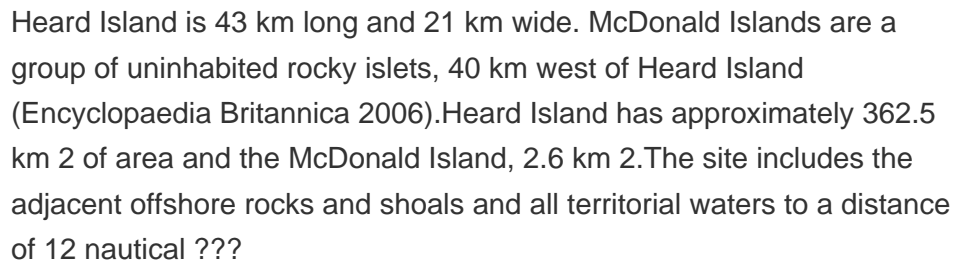
Housed in a 20 feet container, this advanced system boasts an impressive 3.44 MWh capacity, delivering enhanced safety, efficiency, and real-time monitoring for optimized operations and maintenance. Its modular design caters to a wide range of utility applications, including grid stabilization and load balancing, ensuring reliable performance



Management plans also explain what the objectives are for managing the area, and what the managers will do to help meet those objectives.. It is a requirement of the Environment Protection and Biodiversity Conservation Act 1999 (the EPBC Act), under which the Heard Island and McDonald Islands (HIMI) Marine Reserve was declared, that a management plan be prepared ???



San Jos?, 7 de agosto de 2024. Arcos Dorados, franquicia que opera la marca McDonald's en 20 pa?ses de Am?rica Latina y el Caribe, abri? este 3 de agosto, su restaurante n?mero 75 del pa?s, en el cant?n de Gu?piles. Desde el inicio de sus operaciones en Costa Rica, la empresa se ha caracterizado por [???



# HEARD AND MCDONALD ISLANDS CONTAINER COM ENERGIA SOLAR



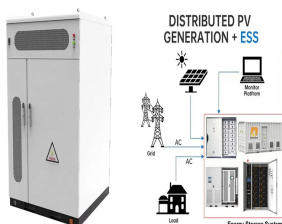
Heard and McDonald Islands. In fact Heard and McDonald Islands are far to the south west of mainland Australia, in the south of the Indian Ocean (near Kerguelen Island, approximately 73 degrees east, 53 degrees south -- reference: The Times Atlas of the World) There was a scientific base on Heard Island in the 1950s but it is not currently staffed.



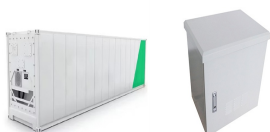
Les îles Heard-et-MacDonald, en anglais Heard and McDonald Islands et Territory of Heard Island and McDonald Islands [1], sont un territoire extérieur de l'Australie situé dans le sud de l'océan Indien, sur la plaque antarctique. Il est constitué d'un petit archipel, les îles McDonald, ainsi que d'une île isolée, l'île Heard. Situé à 422 km au sud-sud-est des îles Kerguelen, c'est une île désert.



L'isola Heard e le isole McDonald sono isole disabitate che si trovano nell'Oceano Antartico, a circa due terzi di distanza tra il Madagascar e l'Antartide. Esse costituiscono un territorio esterno australiano dal 1947 e contengono i due soli vulcani attivi presenti sul territorio australiano, uno dei quali (Mawson Peak) è anche la montagna australiana più elevata, con 2.745 metri.



Due to the extreme isolation of Heard Island and McDonald Islands (HIMI), together with the persistently severe weather and sea conditions, human activities in the region have been, and remain, limited. Atlas Cove and other minor camps distributed across the island. Power is supplied by small diesel generators, solar cells and wind



The December solstice (summer solstice) in Territory of Heard Island and McDonald Islands is at 2:20 pm on Saturday, December 21, 2024. In terms of daylight, this day is 9 hours, 25 minutes longer than the June solstice. In locations south of the equator, the longest day of the year is around this date.

# HEARD AND MCDONALD ISLANDS CONTAINER COM ENERGIA SOLAR



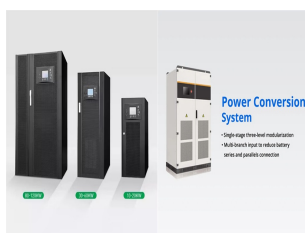
Heard Island and McDonald Islands are uninhabited, barren, Subantarctic islands in the Southern Ocean, far due south of India and roughly 400 km southeast of Kerguelen of the French Southern and Antarctic Lands. The islands are administered by Australia and listed as a UNESCO World Heritage site. Although it's administered by Australia, the islands are approximately 4,000 ???



Heard Island and McDonald Islands. Antarctica. Page last updated: November 27, 2024. Photos of Heard Island and McDonald Islands. view 3 photos. Country Flag. View Details. Country Map. View Details. Locator Map. View Details. Contents. Introduction. Geography. People and Society



Las Islas Heard y McDonald son un conjunto de islas deshabitadas ubicadas en el oc?ano ?ndico, al sureste de ?frica. Por ejemplo, la radiaci?n solar en estas latitudes es alta y constante, lo que convierte a la energ?a solar en una opci?n atractiva para la generaci?n de electricidad. Adem?s, el viento es otro recurso abundante en



A Ilha Heard e as Ilhas McDonald (nome oficial: Territ?rio das Ilhas Heard e McDonald), [1] [2] [3] ? um territ?rio externo australiano que compreende um grupo vulc?nico de ilhas ant?rticas in?spitas e desabitadas, localizadas no oceano ?ndico, a cerca de dois ter?os do caminho de Madag?scar para a Ant?rtida. A ?rea total do grupo ? de 372 km? e tem 101,9 km de litoral.



Housed in a 20 feet container, this advanced system boasts an impressive 3.44 MWh capacity, delivering enhanced safety, efficiency, and real-time monitoring for optimized operations and maintenance. Its modular design caters to a wide ???



# HEARD AND MCDONALD ISLANDS CONTAINER COM ENERGIA SOLAR

? 1/4 ?? 1/4 ? Heard Island and McDonald Islands,? 1/4 ?HIMI? 1/4  
?,,1947 ,1997? 1/4 ?????? 1/4 ????? 1600? 1/4 ?1000,3700



De Heard en McDonaldeilanden (Engels: Heard Island and McDonald Islands (HIMI)) zijn een onbewoonde onherbergzame subantarctische eilandengroep in het zuiden van de Indische Oceaan op de breedtegraad van Vuurland en op dezelfde lengtegraad als Mumbai. Ze liggen op 1700 km van Antarctica en op 4100 km zuidwestelijk van Perth eilanden vallen onder de ???



of species of albatrosses, penguins and petrels that breed on Heard Island (Crawford et al., 2017; Rodriguez et al., 2019). However, the last recorded incidence of an IUU fishing vessel in the Heard Island and McDonald Islands Exclusive Economic Zone was more than a decade ago (IUCN Consultation, 2020a). Residential Areas



HEARD AND MCDONALD ISLANDS AUSTRALIA Heard Island and the McDonald Islands are in the Southern Ocean, approximately 4,100 km south-west of Perth and 1,700 km from the Antarctic continent. Their distinctive conservation value is as one of the world's rare pristine island ecosystems which have virtually no ???



Heard Island and McDonald Islands Fishery Management Plan 2002 v Compilation No. 4 Compilation date: 04/05/2016 fishery means the Heard Island and McDonald Islands Fishery. fishing year means a period of 12 months beginning on 1 December in any year. Heard Island and McDonald Islands Fishery means fishing for fish of a

# HEARD AND MCDONALD ISLANDS CONTAINER COM ENERGIA SOLAR

---



HEARD ISLAND AND MCDONALD ISLANDS Total merchandise trade  
(millions of US\$) 2005 2010 2015 2023 Merchandise exports .. .. .  
Merchandise imports .. .. . Merchandise trade balance .. .. . (as % of  
total exports) Export structure by product group in 2023 Top 5 partners in  
2023 (exports, millions of US\$).. Merchandise exports growth



Located in the Southern Ocean, this Australian external territory  
comprises mainly two volcanic islands, Heard Island and the McDonald  
Islands, featuring stark volcanic landscapes, glaciers, and the highest  
mountain in Australian territory, Mawson Peak. Significance.