

HEARD AND MCDONALD ISLANDS PANEL ELECTRICO SOLAR



Where are Heard Island and McDonald Islands located? The islands are a territory (Territory of Heard Island and McDonald Islands) of Australia administered from Hobart by the Australian Antarctic Division of the Australian Department of Climate Change, Energy, the Environment and Water.



What's happening on Heard Island & McDonald Islands? Landing stores, Atlas Cove, Heard Island with Rogers Head in background Photo: Alan Campbell-Drury Due to the extreme isolation of Heard Island and McDonald Islands (HIMI), together with the persistently severe weather and sea conditions, human activities in the region have been, and remain, limited.



How many people have landed on Heard Island? Since the first landing on Heard Island in 1855, there have been only approximately 240 shore-based visits to the island, and only two landings on McDonald Island (in 1971 and 1980).



How big is Heard Island & McDonald Islands? The group's overall land area is 372 km² (144 sq mi) and it has 101.9 km (63 mi) of coastline. Discovered in the mid-19th century, the islands lie on the Kerguelen Plateau in the Indian Ocean and have been an Australian territory since 1947. Heard Island and McDonald Islands contain Australia's only two active volcanoes.



Does Heard Island have a harbour? Heard Island and the McDonald Islands have no ports or harbours; ships must anchor offshore. The coastline is 101.9 km (63.3 mi) in extent, and a 12 nmi (22 km) territorial sea and 200 nmi (370 km) exclusive fishing zone are claimed. [2]

HEARD AND MCDONALD ISLANDS PANEL ELECTRICO SOLAR



Are there scientific studies on Heard Island? Although hindered by the extreme isolation and unfavourable working conditions, scientific studies have been carried out on Heard Island since the first research visit by scientists from the HMS Challenger in 1874. See the Research Expeditions pages in the History section of this website for more information.



? 1/4 ? Heard Island? 1/4 ?, 3800, 2000, 40, ??? 1953, ??? 1997 ???????????
???



Located in the Southern Ocean, this Australian external territory comprises mainly two volcanic islands, Heard Island and the McDonald Islands, featuring stark volcanic landscapes, glaciers, and the highest mountain in Australian territory, Mawson Peak. Significance.



Heard Island is a 368-square-kilometre (142 sq mi) bleak and mountainous island located at 53°06'??00'??S 73°31'??00'??E. Its mountains are covered in glaciers and dominated by Mawson Peak, a 2,745-metre (9,006 ft) high complex volcano which forms part of the Big Ben massif. Mawson Peak is the highest Australian mountain (higher than Mount Kosciuszko), and one of only 2 ???



The Territory of Heard Island and McDonald Islands (HIMI) is an Australian external territory comprising a volcanic group of mostly barren Antarctic islands, about two-thirds of the way from Madagascar to Antarctica. The group's overall size is 372 km² (144 sq mi) in area and it has 101.9 km (63 mi) of coastline. Discovered in the mid-19th century, the islands lie on ???

HEARD AND MCDONALD ISLANDS PANEL ELECTRICO SOLAR



The December solstice (summer solstice) in Territory of Heard Island and McDonald Islands is at 2:20 pm on Saturday, December 21, 2024. In terms of daylight, this day is 9 hours, 25 minutes longer than the June solstice. In locations south of the equator, the longest day of the year is around this date.



Satellitbild av sydspetsen av Heard Island. Kap Arkona ses p? v?nster sida av bilden, med Lied Glacier strax ovanf?r och Gotley Glacier strax nedanf?r. Big Ben Volcano och Mawson Peak ses l?ngst ned till h?ger p? bilden. Heard- och McDonald?arna, Heard and McDonald Islands, ?r en obebodd australisk ?grupp i s?dra Indiska oceanen.



Commonwealth of Australia since 1953. The Heard Island and McDonald Islands Act 1953 provides the legislative basis for the Territory's administration. Administration of the Territory is the responsibility of the Australian Government department that administers the Heard Island and McDonald Islands Act 1953. This responsibility has



Heard Island and McDonald Islands. Antarctica. Page last updated: November 27, 2024. Photos of Heard Island and McDonald Islands. view 3 photos. Country Flag. View Details. Country Map. View Details. Locator Map. View Details. Contents. Introduction. Geography. People and Society



Heard Island and McDonald Islands Fishery Management Plan 2002 v Compilation No. 4 Compilation date: 04/05/2016 fishery means the Heard Island and McDonald Islands Fishery. fishing year means a period of 12 months beginning on 1 December in any year. Heard Island and McDonald Islands Fishery means fishing for fish of a

HEARD AND MCDONALD ISLANDS PANEL ELECTRICO SOLAR



Heard Island is 43 km long and 21 km wide. McDonald Islands are a group of uninhabited rocky islets, 40 km west of Heard Island (Encyclopaedia Britannica 2006). Heard Island has approximately 362.5 km² of area and the McDonald Island, 2.6 km². The site includes the adjacent offshore rocks and shoals and all territorial waters to a distance of 12 nautical ???



Wolof: Heard Island and McDonald Islands; Wu Chinese: ; Yoruba: Er?k?s? Heard ?ti Er?k?s? McDonald; Yoruba: Er?k???? Heard ?ti ?w?>>?n Er?k???? McDonald; Yoruba: Heard Island and McDonald Islands; Yue Chinese: ; Zulu: I-Heard & McDonald Island; Heard- og McDonaldseyjar



Heard and McDonald Islands. In fact Heard and McDonald Islands are far to the south west of mainland Australia, in the south of the Indian Ocean (near Kerguelen Island, approximately 73 degrees east, 53 degrees south -- reference: The Times Atlas of the World) There was a scientific base on Heard Island in the 1950s but it is not currently staffed.



HEARD AND MCDONALD ISLANDS AUSTRALIA Heard Island and the McDonald Islands are in the Southern Ocean, approximately 4,100 km south-west of Perth and 1,700 km from the Antarctic continent. Their distinctive conservation value is as one of the world's rare pristine island ecosystems which have virtually no ???



A Ilha Heard e as Ilhas McDonald (nome oficial: Territ?rio das Ilhas Heard e McDonald), [1] [2] [3] ? um territ?rio externo australiano que compreende um grupo vulc?nico de ilhas ant?rticas in?spitas e desabitadas, localizadas no oceano ?ndico, a cerca de dois ter?os do caminho de Madag?scar para a Ant?rtida. A ?rea total do grupo ? de 372 km² e tem 101,9 km de litoral.

HEARD AND MCDONALD ISLANDS PANEL ELECTRICO SOLAR



The LL303 is a 4G solar-powered GPS tracker designed for the management of construction vehicles and vessels. Featuring the solar panel, magnetic charger, and IP67 waterproof rating, this device is ideal for a variety of deployments that require long standby time and continued optimal performance.

FLEXIBLE SETTING OF
MULTIPLE WORKING MODES



????,??,??,?????,(R)?,??,?????,?????,??,??,<?,,?????????,??,??,??
???,??,??,??,-?,??,??,??,????? (?,-?,??,??,??,??,(C): Heard Island and
McDonald Islands) ?,??,u?,??,?????,-?,??,??,??,??,??,??,?????,?
?,??,??,?????,??,?????,??,??,?????,(R)?,??,?????,?????,??,??,<?,,??,
?????????,??,??,?????,??,??,??,-?,??,??,??,????? (Territory of Heard
Island and McDonald Islands) [1] [2] ?????,?????,??,??,??,?????,??,?



Heard & McDonald Islands Postcodes, ZIP Codes, Postal Codes information, The Heard & McDonald Islands is a country primarily located in Antarctica, The capital is Canberra. The numeric is 334 and dial code is +672. The postal system name in the country is Postcode, You can find out the postal code of each region from our website. We provide postal codes for 2 ???



McDonald Island is much smaller (2.5 km²), about 100 000 years old and totally ice-free, and is predominantly composed of phonolitic rocks. 9, 10 During the campaign, signs of volcanic activity



OverviewWildlifeHistoryGeographyAdministration and economySee alsoFurther readingExternal links

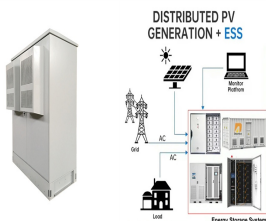
HEARD AND MCDONALD ISLANDS PANEL ELECTRICO SOLAR



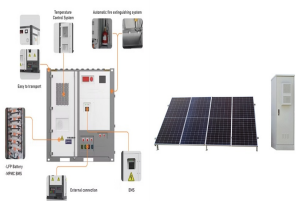
Las Islas Heard y McDonald son un conjunto de islas deshabitadas que forman un territorio externo de Australia desde 1947, situadas en el océano Índico.. La isla Heard es montañosa, dominada por el pico Mawson, un volcán de 2745 m de altura. Con esta altura, el pico Mawson se erige como la montaña más alta de Australia vecina, la isla McDonald es pequeña y rocosa.



Heard Island and McDonald Islands are uninhabited, barren, Subantarctic islands in the Southern Ocean, far due south of India and roughly 400 km southeast of Kerguelen of the French Southern and Antarctic Lands. The islands are administered by Australia and listed as a UNESCO World Heritage site. Although it's administered by Australia, the islands are approximately 4,000 km².



Heard Island and McDonald Islands in the Southern Ocean A map of Heard Island and McDonald Islands. Heard Island, by far the largest of the group, is a 368-square-kilometre (142 sq mi) mountainous island covered by 41 glaciers [21] (the island is 80% covered with ice [1]) and dominated by the Big Ben massif has a maximum elevation of 2,745 metres (9,006 ft) at ???



1/4 1/4 1/4 Heard Island and McDonald Islands, 1/4 HIMI 1/4 1/4, 1947, 1997 1/4 1/4 1/4 1600 1/4 1000, 3700



1/4 1/4 1/4 Heard Island and McDonald Islands, 1/4 HIMI 1/4 1/4, 1947, 1997 1/4 1/4 1/4 1600 1/4 1000, 3700

HEARD AND MCDONALD ISLANDS PANEL ELECTRICO SOLAR



McDonald Island is much smaller (2.5 km²), about 100 000 years old and totally ice-free, and is predominantly composed of phonolitic rocks. 9, 10 During the campaign, signs of volcanic activity



Heard Island: Big Ben volcano seen from Spit Bay: Heard Island: Rogers Head and Dovers Crater - a sunny moment: Heard Island: Kerguelen cabbages grow in surprisingly barren locations! Heard Island: seals dozing helter-skelter among the huge tussocks of Azorella moss: Heard Island: elephant seal - kelp on the sand: Heard Island: a gentoo penguin



The Heard & McDonald Islands site in Australia was inscribed on the World Heritage List in 1997. As the only volcanically active sub-Antarctic islands, Heard and McDonald provide the ???



Management plans also explain what the objectives are for managing the area, and what the managers will do to help meet those objectives.. It is a requirement of the Environment Protection and Biodiversity Conservation Act 1999 (the EPBC Act), under which the Heard Island and McDonald Islands (HIMI) Marine Reserve was declared, that a management plan be prepared ???



Heard Island and McDonald Islands are located in the Southern Ocean, approximately 1,700 km from the Antarctic continent and 4,100 km south-west of Perth. As the only volcanically active subantarctic islands they "open a window into the earth", thus providing the opportunity to observe ongoing geomorphic

HEARD AND MCDONALD ISLANDS PANEL ELECTRICO SOLAR



Les îles Heard-et-MacDonald, en anglais Heard and McDonald Islands et Territory of Heard Island and McDonald Islands [1], sont un territoire extérieur de l'Australie situé dans le sud de l'océan Indien, sur la plaque antarctique. Il est constitué d'un petit archipel, les îles McDonald, ainsi que d'une île isolée, l'île Heard. Situé à 422 km au sud-sud-est des îles Kerguelen, c'est une zone inhabitée.