

# HIGH VOLTAGE RING MAIN UNIT ENERGY STORAGE



Ensuring that your Ring Main Unit (RMU) operates efficiently over its lifespan requires attentive maintenance practices. Their innovative design allows for both the reduction of electrical losses and the optimization of energy ???



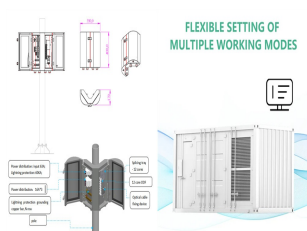
? Self-powered protection unit; ? SF6 insulated common box F+F+V (Load Switch + Load Switch + Circuit Breaker) combination; ? Ring main switch unit 630A, outgoing circuit ???



CHINT 36/40.5kV Ring Main Unit: Empowering New Energy Applications with Innovative Solutions. CHINT Ring Main Unit not only solves the technical and environmental challenges, but also improves operational ???



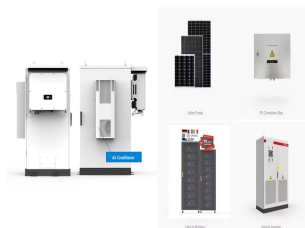
The document discusses a ring main unit (RMU) including its specifications, operational guidelines, functions, and failure reasons. The RMU has a rated voltage of 12kV, current rating of 630A, and can withstand short ???



HLHB-12 environmental gas insulated Ring Main Unit is a complete set of power distribution device of 12KV, three-phase AC 50Hz, single bus and single bus segment system. The product has the characteristics of simple structure, ???



# HIGH VOLTAGE RING MAIN UNIT ENERGY STORAGE



Overview The ring main unit is a group of electrical transmission and distribution equipment (high-voltage switchgear). The ring network refers to a ring distribution network, that is, the power ???



An example of distribution network with Ring Main Units (combinations of RMU units by Schneider Electric) In case a circuit breaker is the switching device, it is also equipped with protective relaying, either with a very ???



Overview. The ring main unit is a group of electrical transmission and distribution equipment (high-voltage switchgear). The ring network refers to a ring distribution network, that is, the ???



The HXGN17-11(24) vacuum ring main unit is a power supply unit and terminal distribution equipment designed for power distribution systems for industrial and mining enterprises, residential areas, high-rise buildings and ???



Ring Main Power Distribution System: A ring main distribution system uses a ring network of distributors fed by multiple feeders, providing continuous power supply even if one feeder fails. Section Isolators : These ???



# HIGH VOLTAGE RING MAIN UNIT ENERGY STORAGE



RMU, Ring Main Unit, is a medium voltage switchgear, consisting several electrical components, Load Break Switch, Circuit Breaker, Fuse, Surge Arrester, Instrument Transformer, Protection Relay, etc. In the rapid growth of ???



Whether you're looking for more control over residential complexes or industrial settings, a smart ring main unit can be the perfect medium voltage switchgear. A typical ring main unit, known as an RMU for short, is a medium ???



The company's products include: 12/24kV series indoor and outdoor switchgear, GIS, ring main unit, pole-mounted vacuum switch (FZW28/ZW20), high and low voltage complete equipment, ???



High Voltage Asset Maintenance; Multi Utility Connections; Contestable Connections; was engaged by Northern Powergrid (NPg) to replace an aged, oil filled Reyrolle LMI, Ring Main ???



They are at the cutting edge of ring main unit design, medium and low voltage switchgear engineering, overhead line equipment, and advanced digitalisation and AI technologies. solar PV and battery energy storage systems with ???



# HIGH VOLTAGE RING MAIN UNIT ENERGY STORAGE



Though RMUs are integral to ring network configurations, their utility extends far beyond. Load switch-based high-voltage switchgear has become increasingly prevalent across non-ring distribution systems; hence, ???