

HOME ENERGY STORAGE WORKING MODE

DIAGRAM VIDEO



What is energy storage system (ESS)? Components What is ESS? An Energy Storage System (ESS) is a specific type of power system that integrates a power grid connection with a Victron Inverter/Charger, GX device and battery system. It stores solar energy into your battery during the day for use later on when the sun stops shining.



What are the parameters of a battery energy storage system? Several important parameters describe the behaviors of battery energy storage systems. Capacity[Ah]: The amount of electric charge the system can deliver to the connected load while maintaining acceptable voltage.



What is a battery energy storage system? The battery energy storage system's (BESS) essential function is to capture the energy from different sources and store it in rechargeable batteries for later use. Often combined with renewable energy sources to accumulate the renewable energy during an off-peak time and then use the energy when needed at peak time.



How many working modes does the G4 energy storage inverter have? The G4 energy storage inverter has 7 working modes and two sets of flexible time axes. Except for EPS, the inverter automatically enters according to the working conditions, and other modes need to be manually selected by the customer. Working mode: Self Use, Feed-in priority, Backup mode, EPS, Manual, Generator mode, peak shaving. time axis:



What size Enphase Energy system diagram should I use? The following sample Enphase Energy System diagrams help you design your PV and storage systems. Size the production RCD to the production circuit size or higher. System size: PV: 3.68 kW AC. Storage: 5 kWh. Size the production RCD to the production circuit size or higher. System size: PV: 7.36 kW AC. Storage: 20 kWh.

HOME ENERGY STORAGE WORKING MODE

DIAGRAM VIDEO



What is the working mode of the inverter? Except for EPS, the inverter automatically enters according to the working conditions, and other modes need to be manually selected by the customer. Working mode: Self Use, Feed-in priority, Backup mode, EPS, Manual, Generator mode, peak shaving. time axis: Allowed discharging period???forced charging period.



In this case, the fluid is released from its high-pressure storage and into a rotational energy extraction machine (an air turbine) that would convert the kinetic energy of the fluid into rotational mechanical energy in a wheel that is engaged with an electrical generator and then back into the grid, as shown in Fig. 7.1b.



Scroll down to "Storage Energy Set" and press Enter - press the Down button once more to "Storage Mode Select" and then press Enter again ; Use the Down button to highlight "Self-Use" and then press Enter, then highlight ON and press Enter ; There are two options: "Allow Charge from Grid" and "Time Charge" - first select "Time Charge"



Pros Cons They're easier and often cheaper to install than traditional gas boilers. If you need to install several of the more expensive type of heaters, the cost can exceed that of a standard boiler installation. They can save you money on home energy when paired with the right tariff. If you fail to adapt your habits, either by not signing up to a time-of-use tariff or by ???



Peak Shaving with Battery Energy Storage System. Model a battery energy storage system (BESS) controller and a battery management system (BMS) with all the necessary functions for the peak shaving. The peak shaving and BESS operation follow the IEEE Std 1547-2018 and IEEE 2030.2.1-2019 standards.

HOME ENERGY STORAGE WORKING MODE

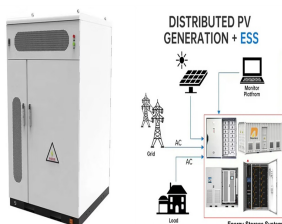
DIAGRAM VIDEO



Working of Switch Mode Power Supply AC Input Supply : The SMPS begins with an AC input supply from the mains power source, typically at 110V or 220V AC depending on the region. Rectification : The AC input is first passed through a rectifier circuit, usually a bridge rectifier, which converts the AC voltage into pulsating DC voltage.



Island mode earthing arrangements: New Guidance in the Second Edition of the IET Code of Practice on Electrical Energy Storage Systems. By: EUR ING Graham Kenyon CEng MIET and Dr Andrew F Crossland CEng PhD Introducing the concept of prosumer's electrical installations (PEIs), and operating modes for a electrical energy storage systems (EESS) and examining ???



Such complexes are called "pumped storage plants". In the area of energy storage, they are definitely the record-keepers. Energy can be stored in other ways, in electric batteries, or thermally in huge reservoirs of molten salts or as compressed air, (the Chapter 11 in this text is devoted specifically to energy storage methods).



PV Module icon (top left): PV arrays connected to the inverter Battery icon (bottom left): high-voltage energy storage system connected to the inverter Inverter icon (middle): Solis Energy Storage Inverter House icon (middle-top-right): home that is consuming power Meter icon (top-right): meter connected to the inverter via RS-485 that is gathering consumption and ???



Download scientific diagram | Schematic diagram of a compressed air energy storage (CAES) Plant. Air is compressed inside a cavern to store the energy, then expanded to release the energy at a

HOME ENERGY STORAGE WORKING MODE

DIAGRAM VIDEO



Compressed Air Energy Storage 103 3. The turbine train, containing both high- and low pressure turbines. 4. Equipment controls for operating the combustion turbine, compressor, and auxiliaries and to regulate and control changeover from generation mode to storage mode. 5. Auxiliary equipment consisting of fuel storage and handling, and



A battery energy storage system (BESS) captures energy from renewable and non-renewable sources and stores it in rechargeable batteries (storage devices) for later use. A battery is a Direct Current (DC) device and when needed, the electrochemical energy is discharged from the battery to meet electrical demand to reduce any imbalance between



Structure diagram of the Battery Energy Storage System (BESS), as shown in Figure 2, consists of three main systems: the power conversion system (PCS), energy storage system and the battery



Figure 2. An example of BESS architecture. Source Handbook on Battery Energy Storage System Figure 3. An example of BESS components - source Handbook for Energy Storage Systems . PV Module and BESS Integration. As described in the first article of this series, renewable energies have been set up to play a major role in the future of electrical



Here are some of the main benefits of a home solar battery storage system. Stores excess electricity generation. Your solar panel system often produces more power than you need, especially on sunny days when no one is at home. If you don't have solar energy battery storage, the extra energy will be sent to the grid.

HOME ENERGY STORAGE WORKING MODE

DIAGRAM VIDEO



Simply put, energy storage allows an energy reservoir to be charged when generation is high and demand is low, then released when generation diminishes and demand grows. Filling in the gaps. Short-term solar energy storage allows for consistent energy flow during brief disruptions in generators, such as passing clouds or routine maintenance.



The Q-U control model is designed by simulating the excitation regulation process of SG, which makes the converter possess Q-U droop characteristic figure 3 is the Q-U control structure diagram and Eq. 2 is the expression of dynamic response process of Q-U control. As can be seen from Figure 3 and Eq. 2, the Q-U control is unsimilar with to SG, which ???



1. Introduction. Electrical Energy Storage (EES) refers to a process of converting electrical energy from a power network into a form that can be stored for converting back to electrical energy when needed [1-3] ch a process enables electricity to be produced at times of either low demand, low generation cost or from intermittent energy sources and to be ???



Download scientific diagram | Schematic diagram of Li-ion battery energy storage system from publication: Journal of Power Technologies 97 (3) (2017) 220-245 A comparative review of electrical



Air-Conditioning with Thermal Energy Storage . Abstract . Thermal Energy Storage (TES) for space cooling, also known as cool storage, chill storage, or cool thermal storage, is a cost saving technique for allowing energy-intensive, electrically driven cooling equipment to be predominantly operated during off-peak hours when electricity rates

HOME ENERGY STORAGE WORKING MODE

DIAGRAM VIDEO



design, installation, and support of home energy systems using the Enphase Energy System (EES). This Any system with an IQ Battery must have Wi-Fi or Ethernet as the primary mode of internet connectivity. The following sample Enphase Energy System diagrams help you design your PV and storage systems. 5.2.1 Solar PV only: Single-phase



Hence, mechanical energy storage systems can be deployed as a solution to this problem by ensuring that electrical energy is stored during times of high generation and supplied in time of high demand.



how does solar energy work diagram step by step. I'm going to use some solar panel diagrams to show you how solar cells work and then describe all of the elements that go up to make a complete home solar system. Creating a step-by-step diagrams of how solar energy works involves illustrating the process from sunlight hitting the solar panels to the generation ???



The Q-U control model is designed by simulating the excitation regulation process of SG, which makes the converter possess Q-U droop characteristic gure 3 is the Q-U control structure diagram and Eq. 2 is the ???



The battery energy storage system's (BESS) essential function is to capture the energy from different sources and store it in rechargeable batteries for later use. Often combined with renewable energy sources to accumulate the renewable energy during an off-peak time and then use the energy when needed at peak time. This helps to reduce costs and establish benefits ???