

HOMEMADE PHOTOVOLTAIC PANEL

LIGHT-CONTROLLED DELAY SWITCH



How do solar LED garden lights work? The system automatically switches ON the lamps at dusk and switches them OFF at dawn. Although the following simple automatic solar LED garden light circuit looks simple, it includes a few interesting features which makes this design extremely adaptable, versatile, safe, efficient and long lasting. The main features are listed below:



How does a solar panel relay work? The associated preset is adjusted such that the relay activates when the solar panel voltage is above 7 volts. The activation of the relay means the regulator circuit and the battery receive the voltage from the solar panel via the N/O contacts of the relay.



What is a 4V solar powered garden light? The 4V level ensures that the battery is never overcharged (at 4.2V) and this also allows the circuit charge the battery without a constant current supply. The following solar powered garden light was designed by Mr. Guido which includes additional features such as over charge and low charge cut off for the battery and with a Schmidt trigger.



How long does a solar panel relay stay activated? This relay remains activated as long as the solar panel voltage is persistent during the day, and as soon as darkness falls, the relay contacts change over and switch the mains adapter voltage with the charger controller unit.



How does a solar panel work? There are three parameters: The solar panel, The battery, And the AC/DC adapter. During day time the solar panel charges the battery and also stays connected to a 1hp air conditioner, pendaflour tube and a computer so that it can be lit through solar panel. At night, all 3 appliances get automatically connected to the battery.

HOMEMADE PHOTOVOLTAIC PANEL

LIGHT-CONTROLLED DELAY SWITCH



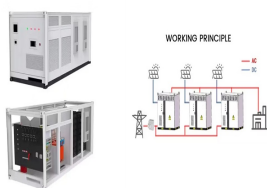
What is automatic change over relay circuit? The discussed automatic change over relay circuit was requested by Mr. Karimulla Baig. The circuit normally charges the connected battery at constant current through the power received from the solar panel, and reverts to DC power from an AC/DC adapter in the absence of solar energy (during night time). Let's read the request in more details:



The second stage is formed by the Solar panel based battery charger circuit, through a 7-8-1-5 IC based voltage regulator stage. During daytime the solar panel supplies around 18 Volts to the 7-8-1-5 IC, which is ???



When battery power goes down, the solar transfer switch will automatically connect your appliances to the grid. This ensures your electrical system continues to operate even when there is no solar power available. A solar power transfer ???



The current generated by the unit is directly proportional to the level of the sun light incident over the surface of the panel. This solar regulator controller circuit also offers a current control feature, which makes sure that the battery always receives a fixed predetermined charging current rate and is never over driven. The module can



K M Electronics(R) Energy Saving Electronic TIME LAG DELAY Light Switch 12 Seconds to 12 Minutes. 4.8 out of 5 stars 6. Countdown Timer Switch, AC 220V Min High Power Pump Electronic Mechanical Countdown Control Timer Socket Time Switch 86 ???

HOMEMADE PHOTOVOLTAIC PANEL LIGHT-CONTROLLED DELAY SWITCH



Energy Monitoring and Control of Automatic Transfer Switch between Grid and Solar Panel for Home System January 2023 International Journal of Robotics and Control Systems 3(1):59-73



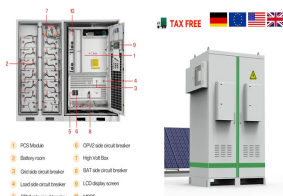
The Timers & Sensors range from Elkay provides a simple and highly cost effective way of saving energy, which can be easily installed in existing buildings and it can be incorporated into new build schemes. Get in touch with us, via our Contacts page, if you have any application questions. Timers Switches and sensors save time, money and energy by controlling when the power is ???



The LM2577 is a monolithic IC that provides all of the power and control functions for boost, flyback, and forward converter switching regulators. This IC is available in three different output voltage versions: 12V, ???



The direct-drive relay will operate the pump whenever there is sufficient power from the panels, providing the relay panel is "in sync" with the pump panels. The Voltage controlled switch or ???



The sound of ghosts wailing: Set the HARD/SOFT switch to soft and the TONE/BURST switch to tone. Lift your right hand over the LDR R9 between 1 and 3 inches while fluttering it. Frankenstein Sound Effect: Adjust the HARD/SOFT switch S3 to soft and the TONE/BURST switch S2 to burst. Put your hands up over your head and gradually bring them ???

HOMEMADE PHOTOVOLTAIC PANEL

LIGHT-CONTROLLED DELAY SWITCH



It should switch off the lights at 10:00 pm and start at 7:00 am daily + switch off the light at 12:00 pm daily and switch up at 6:00 pm back. This will help to make my fishes live longer. ????. Thanks in advance. Amit desai. The Design. So here's the circuit that I came up with.



For one of my recent projects, I needed a way to control some lights powered by a 120V household wall socket. Rather than reverse-engineering some commercial "smart outlets" for the task, I decided to try and do this the ???



Solar lights, ranging from garden lights to night lights, including motion sensor lights and party lights, are sold for all areas of your household. Here we have compiled a list of 18 easy processes on how to make budget ???



We will learn how to make automatic transfer switch which will automatically transfer power to the backup source when primary power fails. The LED should light up when the secondary source is connected. C5200 A1943 Stereo Amplifier DIY Homemade; Bass Tone Control Circuit Diagram ??? TRONICSpro; LA4440 bass amplifier DIY stereo homemade



We have a ceiling fan light. One switch controls the fan, the other the light. When I turn on the light switch, there is a noticeable delay (like a full second) before the light comes on. Is it a wiring issue? I notice no blinking, no other problems, just the delay.

HOMEMADE PHOTOVOLTAIC PANEL

LIGHT-CONTROLLED DELAY SWITCH



Amazon .uk: time delay light switch. No Wiring No WiFi LED Light Wireless Panel House Lighting IP66 Waterproof (2 Gang 4 Receivers Kit) 4.7 out of 5 stars 512. Alexa Smart Light Switch with Remote Control and Timer, Compatible with Alexa, Google Assistant and IFTTT, Easy Installation, Neutral Wire Required (1 Way 1 Gang)



The final trick here is deciding on an order for the switches. Keep in mind where the switch panel will be; you might want to put switches you'll need to access faster closer to where your hand will be. In my case, I fly with my right hand on the stick and my left hand on the throttle, so the switch panel will go on the left side of my desk.



led light delay turning on. Lights have a really important role to play in every household. With the invention of smart technology, we can now see LED lights improve even further, with the devices coming with different smart features. These features help in giving the user more control over their house's lighting. How to Fix LED Light Delay



Light Switch Replacement or Loose Light Switch Wiring Be certain all the power in this circuit is off. Use a certified voltage tester to confirm. Wear rubber-palmed gloves and safety glasses (you may have to look higher). Check the light switch for loose ends. Is all the copper of each wire inserted snug around the terminal screws or in the switch?



Now to get started adding solar power to your small electronics projects and use the sun to power your battery powered night lights, garden lights, and other automated decorations or projects. The circuits are easy to build and to get ???

HOMEMADE PHOTOVOLTAIC PANEL LIGHT-CONTROLLED DELAY SWITCH



The other best solution is to install 12 volt solar panel and attach all these four SMD lights with it. It will charge the battery and will turn the lights On/OFF. This solar panel should be capable to keeps these lights all the night ???



Choose from our selection of time-delay switches, including timer relays, timer switches, and more. In stock and ready to ship. Manual Switch Control. Repeat Cycle. Switch on (Single Shot) Switch-On Asymmetrical Repeat Cycle. Timing Adjustment Style. DIP Switch. Joystick. Mount these timer relays in a panel cutout or plug them into a



Amazon .uk: time delay switch. Skip to main content .uk. Mydome Light Switch Timer ??? Police Approved Retro Fit Timer Switch - A No Wiring Home Security Lighting & Burglar Deterrent Countdown Timer Switch, AC 220V Min High Power Pump Electronic Mechanical Countdown Control Timer Socket Time Switch 86 Panel(60 Min)



1) Circuit Objective. Utilizing this basic sound activated switch design, toggling a system by a sound pulse could be done very effectively, not only with a robotic system but as well as for any desired of home automation.. As an illustration the circuit could be used like a sound-activated light bulb to illuminate a porch light in response to a knock on the front door.



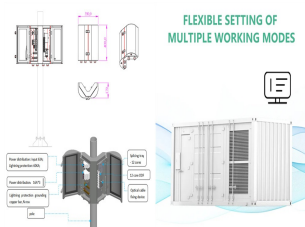
CAUTION: A charge controller is a must for any street light system. You may find other designs on the internet without this feature, simply ignore them. Those can be dangerous for the battery! Referring to the 40 watt ???

HOMEMADE PHOTOVOLTAIC PANEL

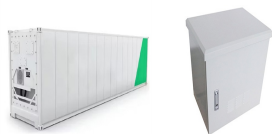
LIGHT-CONTROLLED DELAY SWITCH



The biggest reason for the price drop lies in the photovoltaic (PV) panels themselves: 90% reduction in price (seen in 2019) from \$2/watt to a measly \$0.20/watt! On average, in the United States between 2010 and 2020, the cost of installing a residential solar system fell from \$7.50/watt to \$2.50/watt .



Now to get started adding solar power to your small electronics projects and use the sun to power your battery powered night lights, garden lights, and other automated decorations or projects. The circuits are easy to build and to get working. They are ???



For operation in cloudy weather, it is useful to add one or two additional solar panel. That battery is also connected to an inverter to get AC output. **2.SYSTEM BLOCK DIAGRAM** The block diagram of automatic light switch by using solar power as shown in Fig.1. Solar panel is used to charge the battery. It is connected to the battery.



The moment to change a solar component (whether the battery, the light, or the PV panel) has come when your light has dropped in performance and cannot maintain its usual illuminance at night. Which solar-powered lights to select for your case? Outdoor solar lights. Outdoor solar lights are divided into two main groups:



The setup comprises a small 12v battery, a solar panel to charge it, a retail dawn-dusk light sensitive switch, a DPDT relay and a linear actuator. The problem I have is the LDR switch closes a few lumens too soon ???

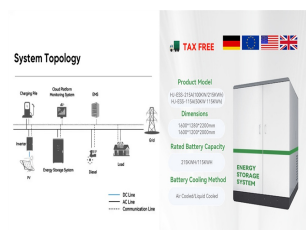
HOMEMADE PHOTOVOLTAIC PANEL LIGHT-CONTROLLED DELAY SWITCH



Sizing, Modeling and Control of Photovoltaic Traffic Light System DOI: 10.9790/1676-1106022536 26 | Page II. Configuration of the PV Traffic Light System The suggested stand-alone PV traffic light system comprises of two main systems that are the PV system



Looking For a Cheaper Switch-Pros & sPOD Alternative Off-Road Switch Panel? Start with this 6-Circuit Switch: Full Step by Step DIY. Wiring lights and other accessories in your build is really simple at first. You start by adding a light here and there, then maybe another powered accessory and then it happens.



Solar panel racking and mounting installation For roof-mount kits, the first step is to mark the location of your roof rafters. These support beams will act as the foundation for your solar array. If your rafters aren't visible from the outside, you can buy a stud finder or measure their location from the inside of your attic.