

HOSPITAL CLEAN ENERGY STORAGE POWER STATION



Here, we present a comprehensive study focusing on the design, analysis, and social impact assessment of a microgrid system tailored for a hospital. The microgrid is designed to support ???



Discover what BESS are, how they work, the different types, the advantages of battery energy storage, and their role in the energy transition. Battery energy storage systems (BESS) are a key element in the energy transition, with several fields of application and significant benefits for the economy, society, and the environment.



Energy storage systems for electricity generation operating in the United States Pumped-storage hydroelectric systems. Pumped-storage hydroelectric (PSH) systems are the oldest and some of the largest (in power and energy capacity) utility-scale ESSs in the United States and most were built in the 1970's. PSH systems in the United States use electricity from electric power grids to ???



WASHINGTON ??? Today, April 25, the U.S. Environmental Protection Agency announced a suite of final rules to reduce pollution from fossil fuel-fired power plants in order to protect all communities from pollution and improve public health without disrupting the delivery of reliable electricity. These rules, finalized under separate authorities including the Clean Air Act, Clean ???



10 ? As the first large-scale centralized shared energy storage power station in Tianchang, the facility comprises a 220 kilovolt booster station and supporting energy storage power station, with a

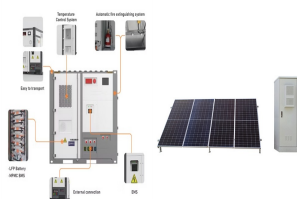
HOSPITAL CLEAN ENERGY STORAGE POWER STATION



This stored energy can be used for maintaining power supplies during periods of high demand or when renewable sources aren't generating power (such as at night or on cloudy days). How microgrids operate to serve hospital power needs. In normal operation, the hospital utilizes onsite power as primary source and utility grid as secondary source.



power system flexibility and enable high levels of renewable energy integration. Studies and real-world experience have demonstrated that interconnected power systems can safely and reliably integrate high levels of renewable energy from variable renewable energy (VRE) sources without new energy storage resources. 2. There is no rule-of-



In December 2022, the Australian Renewable Energy Agency (ARENA) announced funding support for a total of 2 GW/4.2 GWh of grid-scale storage capacity, equipped with grid-forming inverters to provide essential system services that are currently supplied by thermal power plants.

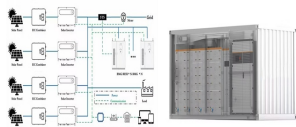


We consult on, design, and engineer low carbon energy projects across the entire low carbon energy supply chain. We've engineered North Sea offshore wind farm structures, operated biogas plants in Australia, evaluated biomass facilities in Chile, studied a solar-gas hybrid plant in Kuwait, and planned energy storage systems for renewables in the United States.



The Palomar Energy Center (PEC) is situated within the Escondido Research and Technology Center industrial park, southwest of the intersection of Vineyard Avenue and Enterprise Street in the city of Escondido, San Diego County. The project site is about 600 feet, west of Interstate 15 and south of State Highway 78.

HOSPITAL CLEAN ENERGY STORAGE POWER STATION



Large scale renewable energy, represented by wind power and photovoltaic power, has brought many problems for the safe and stable operation of power system. Firstly, this paper analyzes the main problems brought by large-scale wind power and photovoltaic power integration into the power system. Secondly, the paper introduces the basic principle and engineering ???



Globally, communities are converting to renewable energy because of the negative effects of fossil fuels. In 2020, renewable energy sources provided about 29% of the world's primary energy. However, the intermittent nature of renewable power, calls for substantial energy storage. Pumped storage hydropower is the most dependable and widely used option ???



Figure 5 illustrates a charging station with grid power and an energy storage system. ESS cannot only enhance the distribution network's effectiveness but also impact the station's cost



In October 2020, China set the goal of peaking CO₂ emissions by 2030 and neutralizing CO₂ emissions by 2060. The application of renewable or clean energy has become an important way of energy conservation and emission reduction in the context of global low-carbon economy, especially under the goal of "carbon neutrality" and "carbon peak" [1].The ???



Kaiser Permanente's Richmond Medical Center was the first hospital in California to implement a microgrid that connects renewable energy and battery storage to a pre-existing, diesel-fueled backup power system in a hospital ??? as a result, the center stands to save an additional 2.63 MWh of energy per year, resulting in annual savings of

HOSPITAL CLEAN ENERGY STORAGE POWER STATION



It can be seen from Fig. 2 that the trend of the standardized supply curve is consistent with that of the system load curve. And it also can be seen from Fig. 3 that for the renewable energy power generation base in Area A, the peak-to-valley difference rate of the net load of the system has dropped from 61.21% (peak value 6974 MW, valley value 2705 MW) to ???



The power supply from clean energy generation accounts for nearly 50 percent of the total, and the two stations can support the annual consumption of over 210 billion kilowatt-hours of clean energy. The pumped storage power station works by pumping water from the reservoir at the foot of the mountain to the reservoir at higher level during the



Moreover, a coupled PV-energy storage-charging station (PV-ES-CS) is a key development target for energy in the future that can effectively combine the advantages of photovoltaic, energy storage and electric vehicle charging piles, and make full use of them . The photovoltaic and energy storage systems in the station are DC power sources, which



The MITEI report shows that energy storage makes deep decarbonization of reliable electric power systems affordable. "Fossil fuel power plant operators have traditionally responded to demand for electricity ??? in any given moment ??? by adjusting the supply of electricity flowing into the grid," says MITEI Director Robert Armstrong, the Chevron Professor ???



It occurs that voltage/reactive power characteristic of energy storage plant and clean energy plant becomes complicated to control and analyze. For the sake of studying the energy storage system and clean energy plant's voltage/reactive power characteristics, a model of energy storage and clean energy plant connected to AC/DC hybrid system is

HOSPITAL CLEAN ENERGY STORAGE POWER STATION



At 11:16 a.m. on December 25 th, 2018, the 50 MW/100 MWh LFP energy storage project of the Luneng National Energy Storage Power Station Demonstration Project, the largest electrochemical energy storage project regarding power generation in China, successfully realized grid-connected power generation. Project introduction The gross installed capacity of the ???



A Colorado Coal Plant Could Help Solve Renewable Energy's Storage Problem As coal plants shut down, many places face the loss of jobs and taxes. But in Colorado, one town hopes to transform a coal



The needed transition to an energy system based on 100% renewable electricity generation is accompanied with a number of challenges. Most prominently, the intermittent nature of the dominating renewable-energy techniques, wind and solar power, requires complementary measures to balance the electricity production and consumption over various time scales [1].



This energy storage system makes use of the pressure differential between the seafloor and the ocean surface. In the new design, the pumped storage power plant turbine will be integrated with a storage tank located on the seabed at a depth of around 400???800 m. The way it works is: the turbine is equipped with a valve, and whenever the valve