

HOUSEHOLD ENERGY STORAGE

PRESSURE WATER PUMP



5 ? The optimal PSI setting for a well pressure tank depends on factors such as your home size, usage pattern, the number of stories in your home, and the distance between faucets and the pressure tank. Common pressure settings for well water tanks are ???



Household pressure pumps We have a range of household pressure pumps, suitable for houses running off-the-grid. Onga JSP45 Home pressure jet pump 240 volts - 39M head. 45L/min. Up to 3 taps. This is great performer with inverter systems because it has good performance, and doesn't draw too much power. Fast free delivery Australia wide.

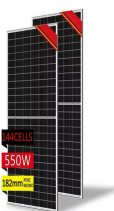


Pumped storage hydropower (PSH) is a type of hydroelectric energy storage. It is a configuration of two water reservoirs at different elevations that can generate power as water moves down from one to the other (discharge), passing through a turbine. The system also requires power as it pumps water back into the upper reservoir (recharge).



2MW / 5MWh
Customizable

The idea for pumped hydro storage is that we can pump a mass of water up into a reservoir (shelf), and later retrieve this energy at will???barring evaporative loss. Pumps and turbines (often implemented as the same physical unit, actually) can be something like 90% efficient, so the round-trip storage comes at only modest cost.



Choose the water pressure booster pump that does it all: The Express Water Adjustable Booster Pump is the best in water purification. The large 1 in. connections and long high efficiency housings are designed for almost no reduction in your home's water pressure. This is a durable, heavy-duty whole house system able to deliver up to 0.25

HOUSEHOLD ENERGY STORAGE

PRESSURE WATER PUMP



Whether you need a good pressure for a shower, getting water from a borewell, or even watering a lawn, a home water pump can make it happen. But with so many types of domestic water pumps available, it can be difficult to decide which will ???



Increasing the air pressure minimizes the storage size but decreases the system efficiency, while using a lower pressure makes the system more energy efficient but results in a larger storage size. each of these have separate spaces for air (below) and water storage (above). The configuration maintains a head of water by means of a pump



Once the pressure in the tank meets the 60 PSI threshold (pump "cut-out" pressure), the pressure switch will signal the water pump to stop pumping, ceasing the influx of water into the tank. With the water pump off, the pressure in the tank will remain at 60PSI until more water in the house is used, draining the tank once again.



A pressure tank is a bladder type pressure storage vessel designed to hold water under pressure. It extends the time the pump is on and off in each cycle due to the pressure switch not tripping so often. This extends pump life, makes less noise, quietens water hammering and cycling and gives a more consistent flow rate. The pressure tank can also be used to ???



A booster pump is designed to provide increased pressure, moving water from a storage tank or mains water to an entire household, office, or even commercial facilities. A household water pressure booster pump system is pretty simple, but it certainly gets the job done. making it reasonably energy-efficient. It only kicks into action

HOUSEHOLD ENERGY STORAGE

PRESSURE WATER PUMP



While simple and energy-efficient, gravity-fed systems require careful planning to get proper water pressure and flow rates. Wind-Powered Water Pump. For off-grid locations with consistent wind, wind-powered water pumps provide another viable option. These pumps utilize wind turbines to generate the power needed for pumping water from the



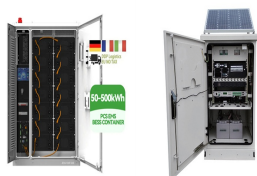
Dynamic, or rotodynamic pumps, are velocity pumps which add kinetic energy to the fluid to raise its flow velocity. As a result, the higher energy is transformed into pressure, until the velocity decreases as it nears the discharge line. Typical Uses. Dynamic pumps are used for water supply, to pump crude oil as well as in the food industry.



Booster pumps are expensive but they're worth every penny when you find the right one, this is where the Simer 4075SS-01 comes in. This pump gives the boost in water pressure you need for your home without costing so much that you have to rent out a room. At a discount of the price of other booster pumps, it performs and lasts like the best



Booster Pumps Can Increase Water Pressure by 15 to 50-psi. A water pressure booster pump is a type of water used to boost the water pressure in residential homes. The typical water pressure increase is in the range of 15-psi and all the way up to 50-psi depending on the size of the pump. Most booster pumps turn on automatically when pressure is



Typical well systems have a water pressure range of 40-60 psi. When the water pressure drops below 40 psi, the pressure switch turns the pump on, bringing the water pressure back up within range. When the water pressure is at an adequate level, the pressure switch turns the pump back off.

HOUSEHOLD ENERGY STORAGE

PRESSURE WATER PUMP



High Performance Water Pressure Booster Pump: 396GPH (25L/min) Flow Rate, 49.2ft (15m) Head, and 1.5bar (21.7 PSI) Maximum Pressure. Standard 1/2" NPT Connection Size. Enjoy strong and consistent water pressure with our powerful 120W motor and high-quality water ???



Residential pumps come in various types, each catering to distinct needs. Here's an overview of some common types: Mini Series Self Priming Regenerative Pumps: Designed for water supply to residential bungalows, garages, flats, hotels, etc.. Centrifugal Deep Well Jet Pumps: These pumps are perfect for deep well water systems, using a water jet to create a vacuum that ???



Why To Get a Hot Water Recirculating Pump. According to the National Resources Defense Council (NRDC), studies suggest that "over 10 percent of all the hot water drawn for showering in a typical single-family home is wasted waiting for hot water to arrive.". Much of the water sitting in those pipes was once heated. Without a recirculating pump, it's left ???



We have full range of Rainwater Tank Pumps which suit from small domestic home or garden use and up to household water supply for double storage. Auto Rainwater Tank Pumps start and stop operations of an electric pump with regard to a stop in pressure (opening of the taps) and to stopping of the flow through the system (closing the taps)



RECOMMENDATIONS OUT NOW! Looking for a new pressure pump for your home or garden? There is an extensive range of domestic pressure pumps available in Australia, whether you are looking for a pressure boosting pump for your home or simply a pump to run your reticulation there are quality solutions available for the Australian ???

HOUSEHOLD ENERGY STORAGE

PRESSURE WATER PUMP



Factors to Consider when Choosing a Water Pump. When it comes to choosing a water pump, several factors should be taken into consideration to ensure you select the most suitable one for your needs. Here are some key factors you should keep in mind: Application: Determine the specific purpose for which you need the water pump. Are you using it for ???



Optimise Water Flow Everywhere with Tsunami Water Pump, Malaysia. Tsunami Water Pump stands out among water pump manufacturers in the market, offering precision-engineered solutions that redefine water flow across residential, commercial, and industrial landscapes. You can explore the technical specifications of our products ??? from motor capacity to pressure ???



About this item . 1. Food-grade stainless steel pressurized water tank: The automatic tower-free water supply container uses safe food-grade stainless steel thick plates, healthy drinking water, super pressure-bearing delicate welds, water-proof, high-pressure resistance, rigorous weld detail treatment, and exquisite workmanship, More solid.



Superior quality & highly reliable corrosion-free Pressure Tanks for longer life and trouble-free operation. System also comes with larger Pressure Tanks, which helps in lower no. of start/stops for the pump, energy savings, longer life of the pump and more storage of Pressurised water.



Water pumps are essential components in various residential, commercial, and industrial applications. They facilitate numerous critical water movement tasks, but one question that frequently arises for users is How much electricity does a water pump use? This concern is significant, especially with rising energy costs and environmental awareness. In this ???

HOUSEHOLD ENERGY STORAGE

PRESSURE WATER PUMP



Installing a water pressure booster can significantly improve your home's water flow. This Old House plumbing and heating expert Richard Trethewey demonstrates how to install a pressure booster system to increase ???



In some instances, large domestic homes may have up to 4 water pressure booster pumps fitted to distribute the load demand and supply enough pressure to the home. How To Size A Water Pressure Booster Pump For Your Home. Sizing the water pressure pump for your home needs to consider some crucial information about your current water pressure and



Over a quarter of the average household's energy is used to heat water for the bathroom, kitchen and laundry. In some homes, it may be much more. Mains pressure ??? Hot water is delivered at a similar pressure and flow rate to cold water so more than one outlet can usually be turned on without affecting pressure. The storage tank is



Learn how to install a water pump and water pressure tank with this helpful installation diagram. Increase water pressure and improve water flow in your home. such as a well or a storage tank. The water pump is typically installed near the source and is connected to a power source for operation. It pulls the water through a suction pipe and