

HOUSEHOLD ROOF PHOTOVOLTAIC BRACKET SPACING



To ensure brackets are installed in a straight line, install a single ProteaBracket on each end of the roof at a measured, consistent distance from the bottom edge of the roof. Use a string line between the two brackets. Mount the remaining ProteaBrackets along the string line, directly into the sheeting of the trapezoidal rib of the roof.



The effective row spacing between the panels is decided by, Panel Tilt (??) Panel width (w) Height difference (H) Shadow angle and Azimuth angle(??) The Tilt angle of a panel varies with the location of the roof and is the most significant factor in deciding the row spacing. It is the angle between the solar panel and the roof base.



With the The Bracket-Based Flat Roof System COMPACTFLAT S system, we have revolutionized the world of PV substructures. AEROCOMPACT offers a sophisticated hybrid solution for roofs that cannot withstand the extra weight of a photovoltaic system. The combination of roof attachment points and ballast reduces the overall weight of the



Bigger chunks of roof are easier, and cheaper, to install solar panels. Keep in mind that a standard residential solar panel is roughly five and a half feet tall by three feet wide. Pictured below, this 290 to 320 watt solar ???



The hanger bolt is a single threaded shaft that passes through the roof deck and waterproofing to embed in the rafter. It should not compress the roofing material or deck. The hanger bolt can then be sealed with a high quality built-up ???

HOUSEHOLD ROOF PHOTOVOLTAIC BRACKET SPACING



I'm trying to get a new PV system installed, on a flat roof. I'm about to apply for planning permission, but can't find any solid info online about restrictions in terms of how far from the edge the panels must be.



??? Roof brackets Mark out positions of roof brackets. Brackets must be in an absolute straight line and 90° to the roof ribs. Fix Lok and Spring Lok: Connect brackets to the roof ribs by torquing the M8 bolt of the Fix Lok/Spring Lok Bracket at 18 N.m. These brackets are ???



Solar Tile Roof Rail Mounting Bracket and cost-efficient installation process. Adaptable post spacing able to withstand varying wind and snow loads. Crafted from premium materials such as galvanized steel, Aluminum, and SUS 304. The L-foot hanger bolt is used to securely attach solar panel racks to the roof structure.



The experimental results show that the mountain PV array system has a 95.7% matching degree in the operation test experiment, which can be perfectly adapted to most PV plants; in the power boost



Energy Requirements ??? The more energy your household consumes, the more solar panels you will need to mount on the roof. An average household uses around 10-15kWh per day, and most solar panels will produce around 1-1.5kWh per day. A standard roof mounted solar panel system uses brackets to attach panels to the roof. This is the most

HOUSEHOLD ROOF PHOTOVOLTAIC BRACKET SPACING



??? We offer as standard 2 panel kits through to 16 panel solar fixings ???
These are complete solar panels slate solar fixing kits that contain our standard aluminium rails with joiners as required. These are connected onto slate roof brackets. ???



Buy 10Pcs Solar Panel Mounting L Bracket Aluminum Alloy Photovoltaic Panel Mounting Bracket for Roof PV System: Solar Panels - Amazon
FREE DELIVERY possible on eligible purchases "Fafeicy is a registered brand of industry and household products." "Adhering to the best product quality and the most considerate service" is the brand



To quantify design wind load of photovoltaic panel array mounted on flat roof, wind tunnel tests were conducted in this study. Results show that the first and the last two rows on the roof are the



An in-roof solar panel system sits on top of the roofs battens and is then tiled or slated around. Solar roof bracket fixed to roof. Solar roof bracket and rail. Panels being fastened to rails on-roof. Panels, therefore, sit on top of the rails ???



developed as a universal PV-mounting system for roof-mounting on pitched and flat roofs. SADL bracket A1 is another innovative Tin roof interface, specified for Kingspan KS1000 RW trapezoidal roof panel. SADL bracket A1 has been tested on the roof panel above in a National Association of Testing Authorities (NATA) accredited lab.

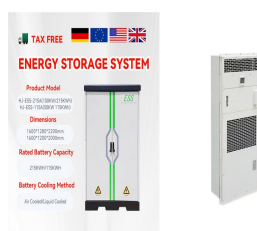
HOUSEHOLD ROOF PHOTOVOLTAIC BRACKET SPACING



Brand: Solar Mounting Systems ??? Solar panel mounting brackets South Africa. Our Solar Mounting Systems provides a variety of solar mounting systems that allow you to attach your solar panels to roof tiles. Our solar mounting systems are made from a high-quality material that is environmentally friendly and durable. They are simple to use and install and come with all the ???



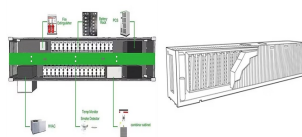
A pivotal component in the installation process is the solar tile roof hook, which serves as the interface between the solar panel and the rooftop tiles. These hooks are not just functional???they are tailored to meet the diverse needs of various roofing materials and styles, making them indispensable in the quest for renewable energy.



Flat Roof Solar PV Array Spacing / Shade Calculator. The minimum required space between parallel rows to avoid shading is decided by the height of the array immediately in front, the slope of the roof and the latitude of the installation site.



Conergy mounting bracket for solar panels to be installed on Roman tile roofs The first step in mounting a solar panel on a corrugated metal roof: L-bracket. Conergy's hook-based system for mounting solar panels on slate or plain tile ???



Calculation Methods for Array Spacing of Photovoltaic Systems with Various Roof Slopes. The integration of photovoltaic (PV) systems into distributed energy generation, particularly on rooftops, represents an increasingly vital strategy in the pursuit of renewable energy sources.

HOUSEHOLD ROOF PHOTOVOLTAIC BRACKET SPACING



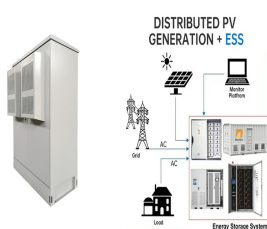
It is simple, you decide how many photovoltaic solar panels you require. Check your solar panel size before placing a solar panel kit order. When setting out bracket and rail measurements, these are usually dependent on the solar panel sizes and roof timbers. You should take a measurement of your roof, as our kits are matched to 450mm spacing.



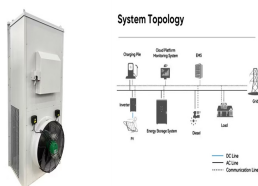
When installing a solar panel system, you'll need to determine the best spacing for your brackets, which depends on a combination of factors, including the type and size of your panels, local ???



Our Stainless steel Slate Roof PV Mounting bracket is perfect for Slate roofs in Ireland and the UK. Simply follow the clip below to secure the Solar PV Panel Slate Roof Mounting Bracket - Stainless Steel to your Roof Rafters, ???



Proper spacing between solar panel rails is essential for ensuring the stability, efficiency, and longevity of solar installations. Factors such as panel type, mounting system design, environmental conditions, and roof type all play ???



Plain tile fixing kits for slate on roof solar panel sizes 2 to 16 panels can be used with all sized pv modules. We offer plain tile solar panel fixing kits based upon 450mm rafter spacing and tile sizes. If your roof is different, then please ???

HOUSEHOLD ROOF PHOTOVOLTAIC BRACKET SPACING



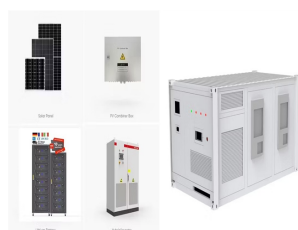
Secure your future with clamps???the pinnacle of solar panel security. Flashings. Discover the power of flashings???the ultimate guardians against water intrusion. Masterfully engineered, they stand resilient against water breaches at roof penetrations, ensuring that your home remains dry and protected.



4. Roof Pad: Protects roofing material and substrate from possible damage over time. Helps distribute loading on roofing material. Meets or exceeds most roofing manufacturers" requirements. 5. EW Wire Clip: The EW Wire Clip is a snap-in cable tie that attaches to the ballast tray and can hold up to 50 lbs. The Wire Clips made of durable



Easy to use solar pv calculator that shows you the roof space needed, effects of panel orientation and roof slope, and even the difference between the counties of Ireland. Annual units generated: For comparison: the yearly average household consumption in Ireland is 4513 kWh (source: SEAI) Annual CO2 emissions saved: 5. SEAI Grant



It is commonly used in common household projects and some industrial area PV projects. PV bracket plan need info as follows: 1. Roof or ground material 2. Roof beam material, beam spacing 3. Country, city and angle of installation 4. The length and width of the site