

HOW BIG IS THE PHOTOVOLTAIC PANEL 620



Q CELLS 60 Cell Solar Panel: 65.8 x 39.4 inches: 41 lbs: Q CELLS 72 Cell Solar Panel: 78.5 x 39.4 inches: 52.9 lbs: Hyundai PERL Monocrystalline Solar Panel 60 Cells 60 cells: 64.5 x 39.29 inches: 42 lbs: Hyundai PERL Monocrystalline Solar Panel 72 Cells 72 cells: 77.17 x 39.29 inches: 52 lbs: LG 60 Cell Solar Panels: 65 x 40 inches: 37.5 lbs



How big are solar panels? Which size is right for you? We answer these questions, and more, in extensive detail. 888.650.4750. Schedule Now. Instant Quote. Solutions. Solar; Storage; It is best to consult with a professional solar panel installer for a more accurate assessment of your energy needs and the size of the solar panel system you



Step-3 Calculate required Solar Panel Capacity: Perform calculations using this formula- Required PV panel wattage (Watts) = Average Daily Energy Consumption (kWh) / Average Daily Sunlight Exposure (hours) ???



On the other hand, the size of a standard solar panel utilized for commercial applications is 72 photovoltaic cells to 98 cells or more. Essentially, this makes the regular commercial solar panel approximately 13 inches longer than the residential solar panels. The Power Output of Solar Panel Sizes



If your solar panel's performance warranty guarantees 80% performance after 25 years, then their degradation rate is calculated as 20%/25 years, or 0.8% production loss each year. By the end of its lifecycle, a 400W-rated panel would only output ???



Solar panels also come with 72 solar cells, which are larger to accommodate the additional cells. They are around 30% larger than residential solar panels, measuring approximately 2.1m tall x 1.1m wide (or 2.3 m2).

HOW BIG IS THE PHOTOVOLTAIC PANEL 620



That's basically a 66x39 solar panel. But what is the wattage? That is unfortunately not listed at all. 72-cell solar panel size. The dimensions of 72-cell solar panels are as follows: 77 inches long, and 39 inches wide. That's a 77x39 solar panel; basically, a longer panel, mostly used for commercial solar systems. 96-cell solar panel size.



For example, the EcoFlow 400W Rigid Solar Panel, one of the many sizes of EcoFlow Rigid Solar Panels, has dimensions of 67.8x44.6 inches (172.2x113.4 cm). While these dimensions aren't exactly what we have listed above, they follow a similar pattern and are relatively close.



Big Dog Solar, solar panel company, your local solar company, will help go solar and save money. Big Dog solar near me is key! 620 Pheasant Ridge Dr. Chubbuck, ID 83202 +(800) 291-7652. Boise, ID. 1190 W Taylor Suite 104 Meridian, ID 83642 +(208) 254-2561. Grand Junction, CO. 489 28 1/2 Rd. Grand Junction, CO 81501



A single photovoltaic cell is 6 inches by 6 inches. A solar panel is comprised of these photovoltaic cells arranged in configurations of 32, 36, 48, 60, 70, and 96 cells. How many cells are in a 300W solar panel? A 300W solar panel is the typical size for a residential solar panel, and these solar panels usually have 60 solar cells.



Monocrystalline solar panels. They comprise monocrystalline silicon cells, which offer high efficiency and a neat aesthetic (black-colored cells). Their dimensions vary depending on the power, but they are generally found in rectangular formats (160 x ???



How Big Is a Solar Panel? While it varies based on manufacturer, most residential solar panels are about 66 inches by 40 inches, or a little over 5 feet by 3 feet. This comes out to about 18 square feet. Commercial solar panels tend to run a bit bigger at 6.5 feet long on average (occupying

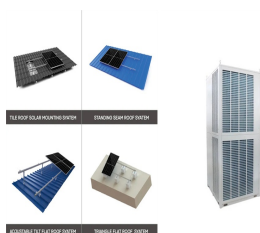
HOW BIG IS THE PHOTOVOLTAIC PANEL 620

about 21 square feet).

HOW BIG IS THE PHOTOVOLTAIC PANEL 620



Watt (W) and kilowatt (kW): a unit used to quantify the rate of energy transfer. One kilowatt = 1000 watts. Solar panels' rating in watts specifies the maximum power the solar panel can deliver at any time, providing insights ???



A 4kW solar panel system costs around \$9,500 to buy and install. If you want to include a battery in the installation, this will add around \$2,000 to the price, for an overall cost of \$11,500.



A standard 60-cell solar panel weighs about 18kg (40 pounds), while a 72-cell solar panel weighs about 23.5kg (52 pounds). 72-cell panels are also taller than 60-cell panels, making them more difficult to carry and maneuver. This can be especially challenging when installing the ???



Summary. You need around 200-400 watts of solar panels to charge many common 12V lithium battery sizes from 100% depth of discharge in 5 peak sun hours with an MPPT charge controller.; You need around 150-300 watts of solar panels to charge many common 12V lead acid battery sizes from 50% depth of discharge in 5 peak sun hours with an ???



First and foremost, we want to answer: How big is a solar panel? In general, the average or typical solar panel size for residential panels is approximately 65 inches by 39 inches. These panels are generally 5.4 feet by ???

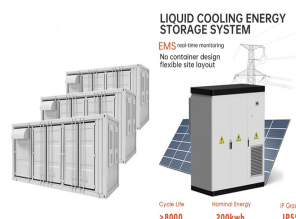
HOW BIG IS THE PHOTOVOLTAIC PANEL 620



, Part B, May 2023, 129522. Research papers. the spatial scale of the result has not yet matched the larger scales of PV applications (e.g., big PV panel arrays or solar farms). With multiple PV panels (or arrays) above larger land surface, the impact of them on the runoff and soil erosion processes would be more complicated at



The solar panel industry showcases a dynamic interplay between panel size and efficiency, a relationship that fundamentally shapes the performance and practicality of photovoltaic systems. Panel size refers to the ???



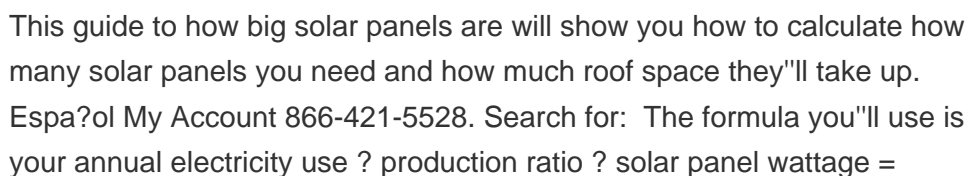
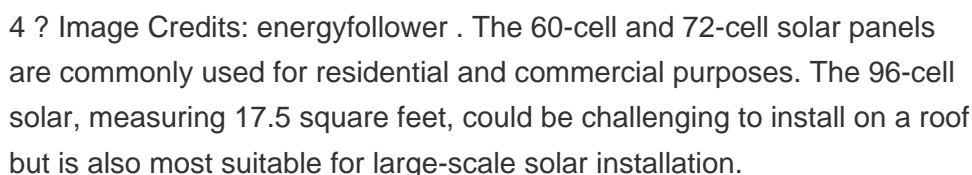
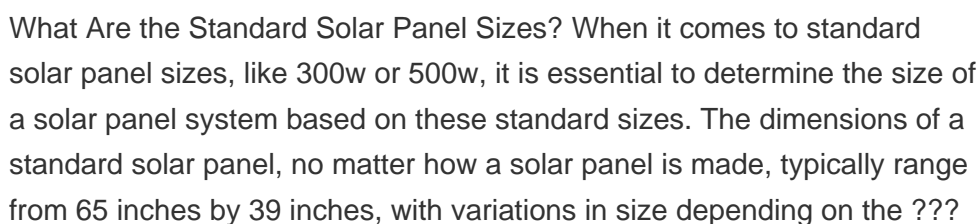
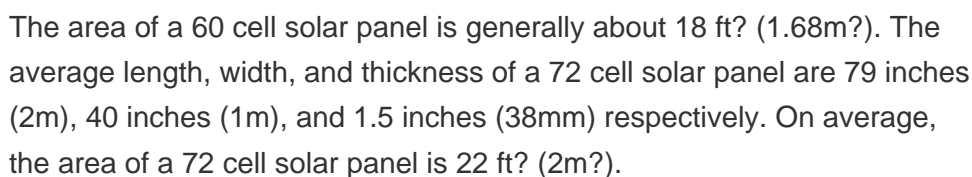
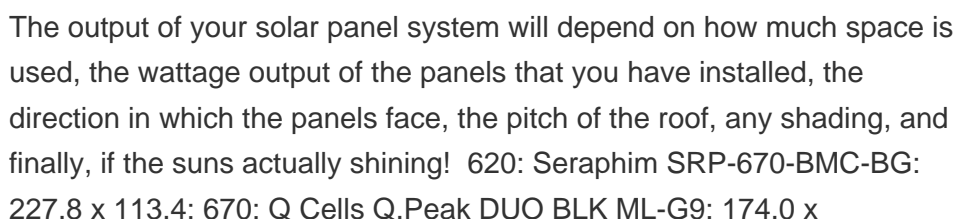
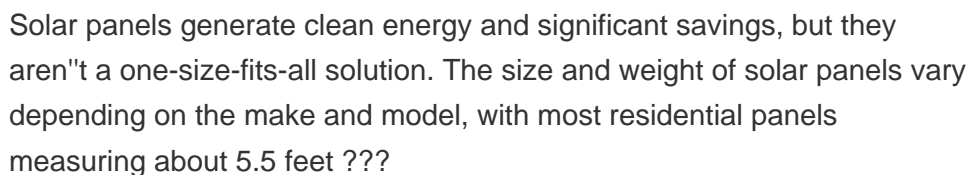
The most efficient solar panel is the AIKO 72-cell N-Type ABC White Hole . As solar panel costs have fallen in recent years, solar panel efficiency has increased at a tremendous pace. 620. 15 years. 88.85% after 30 years-0.29% per ?C. 28.2. Promotes carbon neutrality with Burgenland Energie.



To calculate the electricity consumption of your house or office, follow these simple steps: List your devices or appliances that consume electricity.; Find out the energy consumption per hour of each device ??? let's say 40 W for TV, 6 W for router, 1,000 W for AC, and 8 W for each light bulb.; Approximate the number of hours the device is used ??? multiply ???



Some common solar panel system sizes include a 3kW solar panel system, a 4 kilowatt solar panel system and a 5kW solar panels. For instance, a typical 2kW solar panel system suited for 1-3 people will need ???



HOW BIG IS THE PHOTOVOLTAIC PANEL 620

number of panels needed. Assuming you live in the

HOW BIG IS THE PHOTOVOLTAIC PANEL 620



How Big Is a 100-Watt Solar Panel? A 100-watt solar panel measures 47 inches long by 21.3 inches wide by 1.4 inches deep. A 100-watt solar panel is not typically used to power a residential household. It can provide enough power for small household appliances but is usually used alongside a battery. With battery storage, any excess energy can