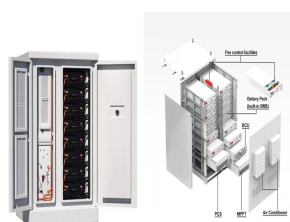


HOW BIG SOLAR PANEL BRACKET ACCESSORIES DO I NEED FOR 200W



Renogy Solar Panel Mounting Kit 200W, Z Brackets Two Sets 8 Pcs, 8Ft 8AWG Tray Cable, 20Ft 10 AWG Adaptor Kit, Y Branch Connector for RV, Camper, Van and Off-Grid Applications . Visit the Renogy Store. 4.6 4.6 out of 5 stars 61 ratings #1 Best Seller in Solar Panel Roof Mounts.



w Solar Panel Kit is designed for off-grid, campervans, motorhomes and yachts/boats. The included Victron SmartSolar MPPT 75/15 charge controller ensures maximum power output and efficient charging of your battery. This kit is perfect for those looking to set up a reliable and efficient solar power system for campervan conversions, boats, ???



Usually, a 100Ah battery will do the job. How Long Can a Refrigerator Run on a 200-Watt Solar Panel? 12V RV refrigerators typically use between 40 to 80 watts per hour and consume approximately 320Wh to 640Wh per day. A 200-watt solar panel produces around 160Wh per hour. Therefore, a 200W solar panel can potentially power an RV fridge for 24



Atem Power 12V 200W Bifacial Shingled Solar Panel Kit - ATEM POWER Solar Panel Brackets: Material: ABS: Cable Entry Housing Waterproof Rating: IP65: Compatibility: 30W~200W Panels: Color: Black: Package Size: 21x13.5x14cm: WHEN DO ITEMS NEED TO BE RETURNED BY? Within 30 days of receipt. Returns will not be accepted if you contact us



BigBlue Solarpowa 200 is a 200 watt portable solar panel with a high solar energy conversion rate of 23%. Used with CP2500 power station, you don't need to wait for hours on end to have a reliable power source.

HOW BIG SOLAR PANEL BRACKET ACCESSORIES DO I NEED FOR 200W



200w solar panel review; How much power will 200W solar panel produce? This 200w Solar Panel produces 38.80v and 5.15a of power, so with 4 hours of sunshine it could produce 1,600w and over 20a of power. What can a 200w ???



Solar Brackets: ABS; 4 Corners; White; Size per bracket 15 x 15 x 6.5cm. Weight (4 brackets) 1.6kg Easy Installation, holes should be drilled in each bracket, and corresponding holes in the solar panel frame on each side; then brackets ???



The solar panel is attached to the roof of the campervan using mounting brackets. These are generally made from plastic. What size solar panel do you need to charge a 12v battery? Firstly you need to know how much power is required, and how big the 12v battery you need to charge is. Generally speaking, the size of the 12v battery is less



W Monocrystalline Solar Panel is a powerhouse, generating an impressive 1000Wh of electricity daily with just 5-6 hours of direct sunlight. Designed with durability in mind, this rigid panel is a perfect fit for homes, ???



w flexi Mono High Density solar panel with top exit junction box uses the latest solar cell technology to create super efficient power generation. Brackets & Fixings. Batteries. Cables & Connectors. Mains Inverters. Battery Boxes. Which controller do I need? Not Requested. 20A PWM. 15A MPPT. 15A MPPT + Display.

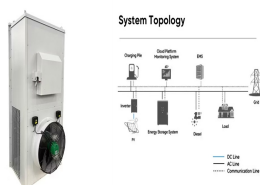
HOW BIG SOLAR PANEL BRACKET ACCESSORIES DO I NEED FOR 200W



For different situations, the daily energy consumption of the refrigerator varies, but it is generally between 310Wh and 650Wh, and we can choose solar panels rated between 100W and 200W or more for its use. For solar panel brand selection, I would recommend buying JinkoSolar panels and Trina Solar panels.



Everything you need to know about installing solar panels, from a basic solar layout to creating your Complete Caravan Solar System with 240V Inverter. This complete guide has links to a huge range of Solar Accessories, Wiring Diagrams and Battery Size Calculator. solar panel 200w out put 19.95 v it is going through 12 dcdc charger is



A solar system with this power rating would consist of 4 ??? 100W solar panels, 2 ??? 200W solar panels, or even a single residential solar panel rated at 345 Watts or more. Here are a few examples of different refrigerators, their daily energy consumption, their location, and how much solar power would be needed for each of them to run:



Buy Solar Panel Mounting Brackets. Enjoy safe shopping online with Jumia. Best Price in Nigeria Fast Delivery & Cash on delivery Available. Solar Panel Mounting Brackets,Z Bracket, For 100W 150W 200W. ??? 37,632. ??? 72,432. 48%. offers from. Car Solar Panel Aluminum Bracket Kits Mounting Z Type Support Solar Panel Stand For Motorhome



The demand for solar panels continues to rise due to environmental concerns and the need for renewable energy sources. Among various options, 200W solar panels stand out for their efficiency and versatility. These panels generate up to 200 watts of power per hour under ideal conditions. This makes them suitable for off

HOW BIG SOLAR PANEL BRACKET ACCESSORIES DO I NEED FOR 200W



Summary. You need around 200-400 watts of solar panels to charge many common 12V lithium battery sizes from 100% depth of discharge in 5 peak sun hours with an MPPT charge controller.; You need around 150-300 watts of solar panels to charge many common 12V lead acid battery sizes from 50% depth of discharge in 5 peak sun hours with an ???



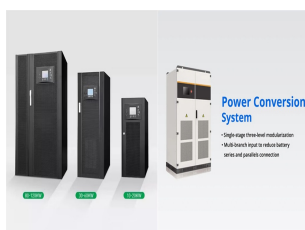
W Solar Panel Kit, 12V / 24V Mono Solar Kit with 20A MPPT Charger Controller/Bluetooth Module/Adaptor Kit/Tray Cables/Fuse Cable/Mounting Z Brackets/ANL Fuse/Branch Connectors Heumbio 400W 12V/24V Solar Panel Kit :2pcs 200W Solar Panel+ 40A MPPT Charge Controller +Other Accessories Needed,Off-Grid,for Home,RV,Boat,Black



Shop ATEM POWER 200W 12V Solar Panel Kit Mono Shingled Fixed + Solar Mounting Brackets online at Vicoffroad. Get fast shipping, easy returns & a friendly service. Solar Panel Brackets: Material: ABS: Cable Entry Housing Waterproof Rating: IP65: Compatibility: 30W~200W Panels: Color: Need some help? BUYING GUIDE CUSTOMER SERVICE. Get \$50



Atem Power 12V 200W Bifacial Shingled Solar Panel Kit + Solar Mounting Brackets If you want solar panels that deliver higher energy yields, look no further than our shingled bifacial solar panels! They capture sunlight from both sides, ???



Shop Atem Power 12V 200W Bifacial Shingled Solar Panel Kit + Solar Mounting Brackets online at Vicoffroad. Shop Atem Power 12V 200W Bifacial Shingled Solar Panel Kit + Solar Mounting Brackets online at Vicoffroad. Get fast shipping, easy returns & a friendly service. 4x4 Accessories; Battery, Solar & 12V; Caravan & Trailer Parts

HOW BIG SOLAR PANEL BRACKET ACCESSORIES DO I NEED FOR 200W



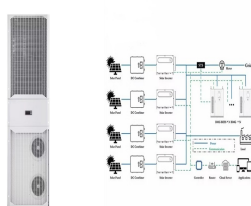
Some common solar panel system sizes include a 3kW solar panel system, a 4 kilowatt solar panel system and a 5kW solar panels. For instance, a typical 2kW solar panel system suited for 1-3 people will need anywhere between 5 and 8 solar panels (for 350W panels).



The first thing you will need is a 200W of solar panels . 200W Photonic Universe monocrystalline solar panel. <https://amzn.to/3jZufW0>. Solar Panel Brackets Black ABS Solar Panel Mounting Brackets 7 Drill-Free Corner ???



Check Price at Amazon. After connecting the solar panels to the MC4 Y branch, you'll connect the branch to the MC4 to 8mm adapter cable (click to view on Amazon) and plug the adapter into the Explorer.. It's not safe to ???



You need around 40 watts of solar panels to charge a 12V 20ah lead-acid battery from 50% depth of discharge in 4 peak sun hours with an MPPT charge controller. You need around 70 watts of solar panels to charge a 12V ???



The calculation formula is the same no matter the solar panel size. Of course if you install a larger solar panel, it will produce more power and you'll need a smaller array. A 400W solar panel could produce 2000W every day. 15 of these gets you to 30kwh a day / 900kwh a month. Note that solar panels may not always reach peak output.

PWM (Pulse Wave Modulation) solar charge controller provide a cost-effective solar charger for the solar panel outputs in our range. Optimised charge control which helps to prolong the life of the battery. 3-6% more effective than non ???

How many brackets do I need? If you are installing a solar panel 150W or bigger, you will also need to use a set of side mount brackets. Depending on the size of your solar panel, you may need to use more than one set of side brackets: ???

ECO-WORTHY 12V 100W Portable Solar Panel Foldable Mono Panel
with 11-in-1 DC Connectors and Adjustable Brackets,Suitable for 95%
Power Station,Emergency Power Backup,RV,Camping,Motorhome.
AFERIY 200W Solar Panel Kit, Portable Solar Panel 200W 22V,
Monocrystalline Solar Panel ETFE with Free-Standing Supports, Junction
Box, IP65 ???

W EFlex solar panel can provide up to 1000Wh per day at average sun intensity levels when you are out for short trips, camping, or fishing. Unlock the Full Potential With Grade A solar battery cells, 9BB cell improves shade tolerance and ???

We have affordable Rigid Monocrystalline Solar Panels for a camper like the Renogy 100W Rigid Monocrystalline Solar Panel or 200W Panel are great choices for installation on campervans with roof racks or similar support structures. Their solid frame gives them additional support that prevents twisting and resists heavier loads and pressure.

HOW BIG SOLAR PANEL BRACKET ACCESSORIES DO I NEED FOR 200W



INTEGRATED DESIGN
EASY TO TRANSPORT AND INSTALL
FLEXIBLE DEPLOYMENT



W Sunshine Solar Power Caravan & Motorhome Kit offers outstanding performance and great value for money. This kit features a Slimline Solar Panel so that even with the narrowest of spaces you can still accommodate our most popular 100W Solar Panel. With a Sunshine 200W solar panel you could expect to generate around 56 [???



DOKIO Foldable Portable Solar Panel 200W 12V Monocrystalline Solar Suitcase with 20A Controller. 4.5 out of 5 stars 756. ECO-WORTHY Foldable Solar Panel 100W 12V Folding Solar Panel with Adjustable Brackets & 11-in-1 DC ???