

HOW HIGH CAN PHOTOVOLTAIC PANELS BE INSTALLED



What angle should solar panels be installed on a roof? Anywhere between 20 and 50 degrees will usually enable your system to produce roughly as much electricity as it could. And in the case of most rooftop solar panel installations, the angle of the solar panels is determined by the angle of the roof ??? so there isn't much you can do to change it.



How high should solar panels be on a flat roof? On a flat roof, the highest part of the solar PV equipment should not be more than 600mm higher than the highest part of the roof (excluding chimney). In some cases, however, permitted development rights are more limited.



What angle should solar panels be installed in London? For instance, the latitude of London is 51.5 degrees, but the optimum angle for solar panels in this city is 36 degrees. However, in the case of most rooftop solar panel installations, the angle of the solar panels is determined by the angle of the roof - there isn't much you can do to change it.



How to install solar panels? Make space for the solar panel accessories (solar inverter, cables and solar batteries, if desired), for instance in a plant room 4. Plan a day for installation 5. Erect the scaffolding (this can be done by your supplier or by a company you organise) 6. The solar panel mounts will be installed 7. The professionals will install the solar panels 8.



How much do solar panels weigh on a flat roof? Crucially, solar panels on a flat roof need a heavy ballasted mounting system to stay secure at the correct angle in high winds. However, a typical ballasted solar panel setup can weigh around 100kg per panel, compared to only around 20kg per panel for a non-ballasted system.

HOW HIGH CAN PHOTOVOLTAIC PANELS BE INSTALLED



What temperature should a solar panel be positioned? Somewhere around 35 degrees is the best compromise for maximum electricity generation throughout the year. Your solar panel positioning can have a huge impact on your system's output. It's crucial to get this right, so your panels have the best chance to soak up as much daylight as possible and generate more electricity for your home.



Solar panels can definitely be installed on a slate roof. It typically costs 30% more than a solar installation on a standard roof. The electricity bill savings more than make up for this higher price.



Solar panel brackets. Solar panel inverter. Solar panel brackets. Installation i.e. labour costs of the installer. Cost of the solar battery storage system (although this is optional). Short answer: the average UK cost of a new domestic solar install is somewhere between £5,000 and £10,000. How much is a single solar panel in the UK?



The short answer: We typically recommend that the maximum domestic solar PV system size is 4kWp, or 16 standard panels (240W-250W) and takes up around 26m² of the roof area, the equivalent of just under two and a half tennis courts.



Case Study: solar panel installation for an average UK home. House type: Semi-detached; Solar panels: polycrystalline 4kW; What Considerations need to be made for the Wind with Flat Roof Solar Panels? High winds can pose a potential risk to flat roof-mounted solar systems. However, there are a number of options you can use to counter this.

HOW HIGH CAN PHOTOVOLTAIC PANELS BE INSTALLED



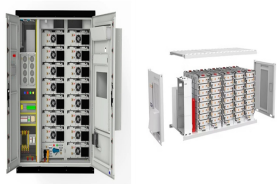
Installation: The physical installation of your solar panel system can vary in complexity, but it generally involves mounting the panels on your roof, installing an inverter, and setting up the connection to your home's electrical ???



Optimal energy performance can be achieved through any of these flat roof solar panel installation methods. However, it's important to raise this concern early in the design process. 5. Solar panels on flat roofs may require frequent cleaning.



Many solar panel companies make small solar panels designed specifically for small roofs. You can also opt for high-efficiency solar panels that have conversion rates as high as 23% (compared to the industry average of ???)



If you have solar PV panels, or are planning to install them, then using home batteries to store electricity you've generated will help you to maximise the amount of renewable energy you use. Storing your solar energy will reduce how much electricity ???



A new solar panel system can be a significant investment, but costs can be minimised by comparing multiple quotes. The most common way to calculate the labour costs of a solar panel installation is to charge 20p per watt. So, for a 4kW system, you would pay 20p for 4000 watts, which comes to ?800. from 6 p/kWh to a high of 30.31 p/kWh

HOW HIGH CAN PHOTOVOLTAIC PANELS BE INSTALLED



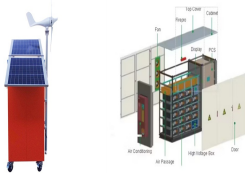
Ground-mounted bifacial solar installations: Bifacial panels are well-suited for ground-mounted solar systems as they can capture sunlight reflected from the ground, increasing energy production. These systems allow for optimal tilt angles and heights, enhancing the albedo effect. The albedo effect refers to the reflection of sunlight from the ground back onto the rear ???



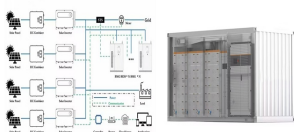
Solar panels could reduce your bills and even earn money by generating electricity you can sell back to your energy company. But the average solar panel system of 3.5kWp will cost around £7,000 to install, according to estimates from the Energy Saving Trust.



In this article we'll take a deep dive into the whole solar panel installation process and look at a walk-through of a typical solar panel system. Before we get into it, we need to do some housekeeping. When a property is over one storey high, scaffolding is essential to gain roof access as the engineers need access to work on the roof.



Use our solar panel buying advice and see our solar panel brand reviews to help make your decision. What is the best angle and roof direction for solar panels? The table below shows the percentage of the maximum output you will get ???



South-facing panels give you the most bang for your buck because the sun crosses the sky in the south, giving the panels more sunlight. "We tell people that a solar panel costs the same amount regardless of what orientation it gets installed in," says Aaron Nitzkin, executive vice president of solar at Citadel Roofing and Solar in California (another ???

HOW HIGH CAN PHOTOVOLTAIC PANELS BE INSTALLED



More than 1.3 million UK households now have solar panels. A typical three-bedroom home will save up to ?454 a year on its energy bill with a solar panel system. Solar panels can help you cut your carbon emissions by ???



Ground Mounted Solar Panel Systems UK; Can I build my own Solar Panel System UK? - DIY Solar; Getting Solar Panel Quotes in the UK 2024; How much Space do I need for Solar Panels? UK Guide 2024; The Smart Export Guarantee (SEG) UK; Solar Panels for New Builds: A UK Guide for 2024; Solar Panels for Schools and Colleges in the UK; How Much



Monocrystalline solar panels are made from a single silicon crystal and tend to be more expensive but convert 15-24% of sunlight. Panel efficiency can impact the number of panels needed for your system and available space on your roof or property. More efficient panels mean you will need a smaller system to achieve the same energy output.



Setting up solar panels can be done in seven simple steps; Solar panel installations typically take about two days to complete; Get a certified solar panel installer to carry out the job; Solar panels can help reduce your monthly energy bills by 50% from day one, according to The Eco Experts" 2024 National Home Energy Survey.

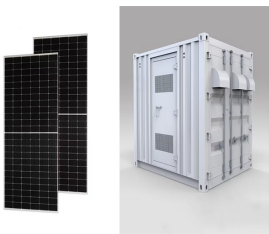


More than 183,000 solar photovoltaic installations were installed across the UK last year, exceeding the total amount installed in 2022 by more than one third. This reflects the growing number of UK homeowners who are turning to ???

HOW HIGH CAN PHOTOVOLTAIC PANELS BE INSTALLED



It's not logical to install your solar panels on a wall that isn't south-facing since wall-mounted systems already have setbacks in their energy generation due to their slope. Because wall-mounted solar panels are vertical or have high slopes even if tilted, their energy absorption is most successful when the sun is lowest in the sky



A unit of measurement used to describe the maximum amount of power that your solar panel system can generate when exposed to optimal sunlight and other ideal conditions. The average domestic solar panel system ???



Currently, there are two primary types of flexible solar panels available on the market. The first kind of flexible solar panel is a thin-film solar panel that contains photovoltaic material printed directly onto a flexible surface. The second type of flexible solar panel is made from crystalline silicon cells.



The ground generally provides more room to install more panels than the roof does. On the other hand, panels on the ground can interfere with your home's overall aesthetic more than they would on the roof. Installation of ground panels also takes significantly more time and effort and is generally more expensive than rooftop panels.



A unit of measurement used to describe the maximum amount of power that your solar panel system can generate when exposed to optimal sunlight and other ideal conditions. The average domestic solar panel system in the UK is around 3.5 kilowatt peak (kWp). Pitch. This is the angle at which your roof faces the sun.

HOW HIGH CAN PHOTOVOLTAIC PANELS BE INSTALLED



Surprisingly, solar panel lifespan has always been extremely good. Given they have no moving parts, there is rarely something that can go wrong within the solar panel itself, which means they can keep generating ???



Fortunately, you can still install a solar panel system safely and effectively on both. With a flat roof, panels need to be tilted towards the sun for optimal production, so your solar installer will need to install slanted metal racking to prop up your panels.



The average cost of a 10.8 kW solar panel installation on EnergySage is \$20,948 after federal tax credits. You'll probably save anywhere from \$28,000-\$120,000 over 25 years by going solar. Investing in high-quality equipment can lead to better long-term savings.



Solar photovoltaic cells are the building blocks of solar panels, and any property owner can start generating free electricity from the sun with a solar panel installation. On the EnergySage Marketplace, you can register ???



The ideal pitch for a Solar Panel is around 30 degrees off the horizontal. Simply because this allows the panels to gain more exposure from the sun throughout the entire day. When installing Solar panels on a flat roof, this is easily achieved. As the Solar Panels are installed onto a bracket which tilts the panel to around 30 degrees.

HOW HIGH CAN PHOTOVOLTAIC PANELS BE INSTALLED



Any implementation of a sustainable photovoltaic solar energy system implies the optimization of the resources to be used. Therefore, it is the basis for the design and assembly of solar ???



In this guide, we'll explain a typical solar panel installation from start to finish, as well as what all the hardware does, and where on your property you can install the panels. If you're interested in how much you could save ???



These fences are designed to be robust for security reasons in order to protect livestock. However, in residential examples of solar panel fencing, installation of the panels tends to be simpler. Green Akku, a German-based solar panel supplier, provides solar panel fencing kits that can mount to pre-existing fences. These kits include PV



The installation of solar PV panels on the roof on a house needs to comply with Building Regulations including Part A on Structural Safety. If the loading to the roof is increased by 15 per cent or more, this is a material alteration and formal



3. Make space for the solar panel accessories (solar inverter, cables and solar batteries, if desired), for instance in a plant room. 4. Plan a day for installation. 5. Erect the scaffolding (this can be done by your supplier or by a company you organise) 6. The solar panel mounts will be installed. 7. The professionals will install the solar