

HOW LONG DOES IT TAKE FOR 50 WATTS OF SOLAR POWER TO GENERATE ELECTRICITY



How many Watts Does a solar panel generate a day? Each solar panel system is different ??? different panels,different location,different size ??? which means that calculating the ???average??? output per day depends on many factors. However,the majority of private-use solar panels are able to generate anywhere between 250 to 400 wattspers every hour of sunlight.



How many kWh do solar panels generate a year? We will also calculate how many kWh per year do solar panels generate and how much does that save you on electricity. Example: 300W solar panels in San Francisco,California,get an average of 5.4 peak sun hours per day. That means it will produce $0.3\text{kW} \times 5.4\text{h/day} \times 0.75 = 1.215 \text{ kWh}$ per day. That???'s about 444 kWh per year.



How much energy does a 100 watt solar system produce? A 100-watt solar panel installed in a sunny location (5.79 peak sun hours per day) will produce 0.43 kWh per day. That???'s not all that much,right? However,if you have a 5kW solar system (comprised of 50 100-watt solar panels),the whole system will produce 21.71 kWh/day at this location.



How many kWh does a 300W solar panel produce a day? We can see that a 300W solar panel in Texas will produce a little more than 1 kWh every day (1.11 kWh/day,to be exact). We can calculate the daily kW solar panel generation for any panel at any location using this formula. Probably,the most difficult thing is to figure out how much sun you get at your location (in terms of peak sun hours).



How much electricity does a kW solar system produce? In the UK,a region with an average of four hours of sunlight per day,each square metre of solar panels can generate 0.6kWh to 0.8kWh. And this equals to 2.4 to 3.2kWhenergy output for a four kW system per day. How Much Electricity Does a 1 kW Solar Panel System Produce?

HOW LONG DOES IT TAKE FOR 50 WATTS OF SOLAR POWER TO GENERATE ELECTRICITY



How much power does a 50 watt solar panel produce? To give you an idea, I'm going to share the Renogy 50-watt monocrystalline solar panel specification. Under ideal conditions (typically known as standard test conditions - STC) a 12v 50 watt solar panel will produce 50 watts of DC power output with 18.6V & 2.69A current.



The watt is key to measuring electricity. It shows how fast we use or make energy. Whether it's a light or a fridge, it's measured in watts. As we use more, watts become kilowatts and megawatts. Turning solar power into understandable numbers shows how careful we must be with our resources. While 1 MW might seem hard to grasp, seeing it



Whether they'll generate enough electricity for your home year-round will depend on: how much power your solar panels generate; whether they generate enough electricity in winter; how much power your home needs, and ???



On average, across the US, the capacity factor of solar is 24.5%. This means that solar panels will generate 24.5% of their potential output, assuming the sun shone perfectly brightly 24 hours a day. 1 megawatt (MW) of solar panels will generate 2,146 megawatt hours (MWh) of solar energy per year.



In a nutshell, solar panels generate electricity when photons (those particles of sunlight we discussed before) strike solar cells. The process is called the photovoltaic effect. First discovered in 1839 by Edmond Becquerel, the photovoltaic effect is characteristic of certain materials (known as semiconductors) that allows them to generate an electrical current when ???

HOW LONG DOES IT TAKE FOR 50 WATTS OF SOLAR POWER TO GENERATE ELECTRICITY



On average, 400-watt solar panel will produce 1.6 kWh - 2.6 kWh per day or 250-340 watts of power per hour, So a 12v 400w solar panel system will give you a maximum total of 216 Amp-hours and with a 24V 400W solar kit you can expect 110 Amp-hours



How much electricity do solar panels generate per square metre? you can offset installation costs and save significantly on your energy bills in the long run. a typical residential solar panel with a power output of 300 ???



To calculate the electricity consumption of your house or office, follow these simple steps: List your devices or appliances that consume electricity.; Find out the energy consumption per hour of each device ??? let's say 40 W for TV, 6 W for router, 1,000 W for AC, and 8 W for each light bulb.; Approximate the number of hours the device is used ??? multiply ???



From the above, we gather that a household with 1-2 people typically uses around 1800 kWh of electricity each year, which means they'd need about 6 solar panels to generate around 1590 kWh. On the other hand, a family of 4-5 people who use about 4100 kWh annually would need closer to 14 panels to meet their energy needs.. In the UK, a typical 350W solar panel ???

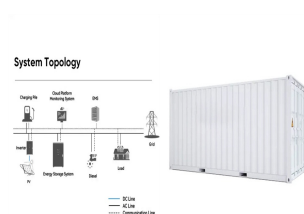


To calculate how much power a solar system will generate, multiply the solar panel wattage by the number of daylight hours, and then multiply that by the number of solar panels you have. For example, with 350W ???

HOW LONG DOES IT TAKE FOR 50 WATTS OF SOLAR POWER TO GENERATE ELECTRICITY



As solar energy systems absorb solar radiation through photovoltaic (PV) panels, they generate watts of electrical power. The electricity generated can be stored and later dispensed as the need arises. According to the Department of Energy, generating one GW of power takes over three million solar panels. How Much Power Does 1 GW Produce?



The Solar PV System Inverter. An inverter is a crucial part of a solar power system as its job is to convert the direct current (DC) electricity generated by your solar panels into 120-volt alternating current (AC) electricity for use in your home or business.



Read our buying advice for solar panels to see how much of your power solar panels could generate in summer. How much electricity does a solar panel produce? Household solar panel systems are usually up to 4kWp ???

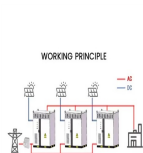


Watts, kilowatts and kilowatt-hours: Watts (W) is a unit of power used to quantify the rate of energy transfer. It is defined as 1 joule per second. A kilowatt is a multiple of a watt. One kilowatt (kW) is equal to 1,000 watts. Both watts and kilowatts are SI units of power and are the most common units of power used. Kilowatt-hours (kWh) are a



Multiplying the number of panels by the 400-watt power output of each panel gets us a system size of about 16.8 kW. 50: 26,000 kWh 1,200: 60: 31,200 kWh 1,500: 75: 39,000 kWh 1,700: 85: 44,200 kWh 2,000: 100: More panels equals more energy production, so a larger roof means more capacity to generate solar electricity.

HOW LONG DOES IT TAKE FOR 50 WATTS OF SOLAR POWER TO GENERATE ELECTRICITY



How much power or energy does solar panel produce will depend on the number of peak sun hours your location receives, and the size of a solar panel. just to give you an idea, one 250-watt solar panel will produce about ???



Daily electricity consumption: 30 kWh (30,000 Watt-hours) Average peak sun hours: 4.5 hours per day; Average panel wattage: 400W How many solar panels does it take to power a house? Going solar is a ???



With the above list, you can roughly measure and decide which appliances to use for your 2000-watt solar generator.. Conclusion. All in all, for people who want a basic home battery backup power solution, a 2000-watt solar generator is a cost-effective investment in the long run. Most basic kitchen and home items, including lights, fans, culinary devices, and ???



From the above, we gather that a household with 1-2 people typically uses around 1800 kWh of electricity each year, which means they'd need about 6 solar panels to generate around 1590 ???



1. Solar panel power and efficiency. When it comes to solar panels, "power" refers to the maximum amount of electricity a panel can generate (in watts). The panel's "efficiency" is all about how effectively it can convert ???

HOW LONG DOES IT TAKE FOR 50 WATTS OF SOLAR POWER TO GENERATE ELECTRICITY



An average two kW system that receives five hours of sunlight per day will be able to generate around 10,000 watt hours (10 kWh a day). The average capacity for a residential solar system ranges from one kW up to four ???



It consists of many photovoltaic cells that generate direct current (DC) electricity when exposed to light. A 50 watt solar panel can produce a maximum of 50 watts under optimal conditions. A 50 watt solar panel can produce approximately 50 watts of power under ideal sunlight conditions. This means it has the capability to charge devices or



Residential Uses: 400-watt solar panels are perfect for residential applications. They can power a variety of household appliances and systems, significantly reducing your reliance on grid electricity. Commercial and ???



A kilowatt-hour is a basic unit of energy, which is equal to power (1000 watts) times time (hour). Your electric bills show how the average number of kWh you use per month. For example, a 50 Watt light bulb left on for one hour would be 50 Watt hours, and 20 50 watt light bulbs running for one hour would be 1 kilowatt-hour (kWh).



Solar panels are designed to produce their rated wattage rating under standard test conditions (1kW/m² solar irradiance, 25 °C temperature, and 1.5 air mass).. But in real world conditions, on average, you'd receive about 80% of rated power output from your solar panel during peak sun hour.. Peak sun hour is an hour in the day when the solar radiation ???

HOW LONG DOES IT TAKE FOR 50 WATTS OF SOLAR POWER TO GENERATE ELECTRICITY



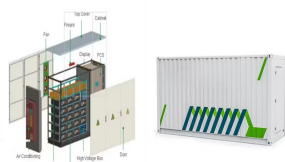
A kilowatt-hour is a basic unit of energy, which is equal to power (1000 watts) times time (hour). Your electric bills show how the average number of kWh you use per month. For example, a 50 Watt light bulb left on for one ???



How many amps does a 200 watt solar panel produce? In terms of current, 12V-200W solar panels are usually rated at 8 to 10 Amps. The amperage of the solar panel is generally specified by the manufacturer under I_{mp} or I_{mpp} , which stands for Current at Maximum Power.. In other words, if enough sunlight is provided, a 12V-200W solar panel will produce between 8 ???



What will a 2000 Watt solar generator run? 2000 watts of solar energy is enough to power a lot of larger appliances such as a refrigerator, freezer, or microwave. How long will a solar generator store power? Solar generators have significant longevity depending on the technology they use. Most rely on lithium batteries that will store power for



= 360 Watts. $360 / 50 = 7.2$. So, for a 50 Watt solar panel, it'll take around 7 hours or so to fully charge the battery from zero. If the battery is halfway then you would only need to take half of its total capacity and use that in the equation. What Can a 50 Watt Solar Panel and 30Ah Battery Power?



How many kWh does this solar panel produce in a day, a month, and a year? Just slide the 1st slider to "300", and the 2nd slider to "5.50", and we get the result: In a 5.50 peak sun hour area, a 300-watt solar panel will produce 1.24 kWh per ???

HOW LONG DOES IT TAKE FOR 50 WATTS OF SOLAR POWER TO GENERATE ELECTRICITY



Max power output (Watts): 50 watt Optimum operating voltage (V_{mp}): 18.6V Optimum operating current (I_{mp}): 2.69A Operating temperature: (-40°C to +90°C) (-40°F to 194°F) Weight: 7.72 lb / 3.5 kg Under ideal ???



9 ? How does a 100-watt solar panel generate power? A 100-watt solar panel generates power through photovoltaic (PV) cells, which convert sunlight into direct current (DC) electricity. This electricity can then be converted into alternating current (AC) by an inverter for use in home appliances or for charging batteries.



Solar panels generate electricity during the day. They generate more electricity when the sun shines directly on the solar panels. Figure 5 shows PV generation in watts for a typical 2.8kW solar PV system on 11 July 2020, when it was sunny throughout the day and on 13 July when there was a mixture of sun and cloud. A south-facing solar PV