

HOW LONG DOES IT TAKE FOR THE ENERGY STORAGE LITHIUM BATTERY TO START WORKING



How do I choose a lithium-ion-based energy storage system? Choosing the right supplier when looking at lithium-ion-based energy storage systems is important. EVESCO's battery energy storage systems utilize an intelligent three-level battery management system and are UL 9450 certified for ultimate protection and optimal battery performance.



Why are lithium-ion batteries used in energy storage systems? The popularity of lithium-ion batteries in energy storage systems is due to their high energy density, efficiency, and long cycle life. The primary chemistries in energy storage systems are LFP or LiFePO₄ (Lithium Iron Phosphate) and NMC (Lithium Nickel Manganese Cobalt Oxide). A lithium-ion based containerized energy storage system



How long does a battery last? The amount of time storage can discharge at its power capacity before exhausting its battery energy storage capacity. For example, a battery with 1MW of power capacity and 6MWh of usable energy capacity will have a storage duration of six hours. Depth of Discharge (DoD) expresses the total amount of capacity that has been used.



What is a battery energy storage system? A battery energy storage system (BESS) is an electrochemical device that charges (or collects energy) from the grid or a power plant and then discharges that energy at a later time to provide electricity or other grid services when needed.



What is battery storage & why is it important? Battery storage is one of several technology options that can enhance power system flexibility and enable high levels of renewable energy integration.

HOW LONG DOES IT TAKE FOR THE ENERGY STORAGE LITHIUM BATTERY TO START WORKING



What are lithium-ion batteries used for? Not only are lithium-ion batteries widely used for consumer electronics and electric vehicles, but they also account for over 80% of the more than 190 gigawatt-hours (GWh) of battery energy storage deployed globally through 2023.



Dominating this space is lithium battery storage known for its high energy density and quick response times. Solar energy storage: Imagine capturing sunlight like a solar sponge. Solar energy storage systems do just that. They use photovoltaic cells to soak up the sun's rays and store that precious energy in batteries for later use.



With interest in energy storage technologies on the rise, it's good to get a feel for how energy storage systems work. Knowing how energy storage systems integrate with solar panel systems ???as well as with the rest of your home or business???can help you decide whether energy storage is right for you.. Below, we walk you through how energy storage systems work ???



Therefore, proper storage is crucial to maintain the battery's health and maximize its lifespan. When you store a lithium battery, it is important to keep it at a partial charge rather than fully charged or completely drained. A charge level between 40-60% is considered ideal for long-term storage.



This rechargeable battery uses lithium ions to pump out energy. No wonder they're often called the MVPs of energy storage. Take regular batteries, for example, which can store around 100-200 watt-hours per kilogram (Wh/kg) of energy. This dual role of playing protector and thermostat is key to making sure the battery lives a long and

HOW LONG DOES IT TAKE FOR THE ENERGY STORAGE LITHIUM BATTERY TO START WORKING



2- Enter the battery voltage. It'll be mentioned on the specs sheet of your battery. For example, 6v, 12v, 24, 48v etc. 3- Optional: Enter battery state of charge SoC: (If left empty the calculator will assume a 100% charged ???



Importantly, the appropriate fire extinguishing method will vary depending on the type of lithium battery in question (such as lithium-ion, all-solid-state lithium-ion or lithium polymer).



How long will my solar battery last? How long a solar battery will last depends on the size of your battery and what you are running off of it. The kWh rating is how many hours you have to run 1kW worth of appliances. Here is how long a 4.8kWh battery (3.84kWh at 80% DOD) will last running 500W, 750W, 1kW and 2kW: 500W ??? 7.6 hours 750W ??? 5



The supercapacitor is used for energy storage undergoing frequent charge and discharge cycles at high current and short duration. it is not a battery replacement to store long-term energy. If, for example, the charge and discharge times are more than 60 seconds, use a battery; if shorter, then the supercapacitor becomes economical

APPLICATION SCENARIOS



Avoid use or storage of lithium-ion batteries in high-moisture environments, and avoid mechanical damage such as puncturing. A battery cell consists of a positive electrode (cathode), a negative electrode (anode) and an electrolyte that reacts with each electrode. Lithium-ion batteries inevitably degrade with time and use.

HOW LONG DOES IT TAKE FOR THE ENERGY STORAGE LITHIUM BATTERY TO START WORKING



All batteries gradually self-discharge even when in storage. A Lithium Ion battery will self-discharge 5% in the first 24 hours after being charged and then 1-2% per month. If the battery is fitted with a safety circuit (and most are) this will contribute to a further 3% self-discharge per month. If you Google "lithium battery state of



We have received a lot of questions asking about how long does a 5kWh battery last. Typically, a 5kWh solar battery can last approximately ten hours when you're only running a few appliances, such as your TV, fridge, and ???



The popularity of lithium-ion batteries in energy storage systems is due to their high energy density, efficiency, and long cycle life. The primary chemistries in energy storage systems are LFP or LiFePO4 (Lithium Iron Phosphate) and NMC (Lithium Nickel Manganese Cobalt Oxide).



The type of lithium battery, the age of the battery, and the conditions under which it is stored all play a role in how quickly a lithium battery will degrade. Generally speaking, lithium batteries will lose about 5% of their capacity per ???



Battery energy storage is essential to enabling renewable energy, enhancing grid reliability, reducing emissions, and supporting electrification to reach Net-Zero goals. As more industries transition to electrification and the need for ???

HOW LONG DOES IT TAKE FOR THE ENERGY STORAGE LITHIUM BATTERY TO START WORKING



Picture a world powered by the hum of lithium batteries ??? in our homes, gadgets, vehicles, and more. Martin Koebler, our founder, has spent decades making this world a reality. His groundbreaking work in lithium ???



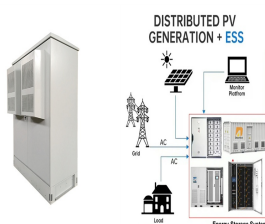
How long will a 400w solar panel take to charge a 200Ah battery?
Depending on your battery's charge status, and weather conditions, it will take from 5-8 hours for a 400w solar panel to charge a 200ah battery.
How many ???



However, date stamp based battery replacement may not apply to all scenarios as it does not take into account the level of use. In any case, a LiPo battery is considered to start "aging" on the first day it is powered up.
???

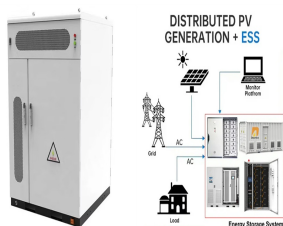


In this guide, our expert energy storage system specialists will take you through all you need to know on the subject of BESS; including our definition, the type of technologies used, the key use cases and benefits, plus challenges and ???



Lithium-ion battery, usually we call it energy storage lithium battery for short. In daily life, energy storage lithium batteries are closely related to our use of mobile phones and ???

HOW LONG DOES IT TAKE FOR THE ENERGY STORAGE LITHIUM BATTERY TO START WORKING



Part 1. What is lithium battery cycle life? Lithium battery cycle life refers to the number of charge-discharge cycles a lithium battery can undergo before its capacity drops to a specified level. When you charge a lithium ???



Well, the 18650 lithium-ion battery comes with the feature of DoD. It means that the 18650 battery lithium has a great depth of discharge. The battery stores discharge to zero percent. Also, it can fully recharge. The working principle of a 18650 lithium-ion battery. Read next to learn the basics of working on the 18650 lithium battery.



Lithium-Ion battery. As mentioned earlier, battery manufacturers prefer lithium-ion battery technology for its higher DoD, reliable lifespan, ability to hold more energy for longer, and a more compact size. If you don't have solar energy battery storage, the extra energy will be sent to the grid. If you participate in a net metering program



Battery Chemistry: Different LIB chemistries, such as lithium-ion, lithium-polymer, and lithium-iron-phosphate, have varying charging characteristics and optimal charging profiles. For example, lithium-iron-phosphate batteries generally have a longer charging time but a longer lifespan compared to traditional lithium-ion batteries.

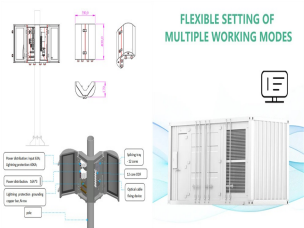


After 3 years of researching how to extend lithium battery, I found that the depth of discharge is a myth, it has zero effect on life, you can discharge up to 2.75 volts without wear and tear, a smartphone turns off when ???

HOW LONG DOES IT TAKE FOR THE ENERGY STORAGE LITHIUM BATTERY TO START WORKING



It doesn't matter if you have a 100Ah lithium battery, 100Ah deep-cycle battery, or 100Ah LiFePO4 battery; all of them run on 12 volts or 12V. With these two key metrics ??? 100Ah and 12V ??? we can precisely calculate how much electrical capacity (measured in Wh) a ???



Not only are lithium-ion batteries widely used for consumer electronics and electric vehicles, but they also account for over 80% of the more than 190 gigawatt-hours (GWh) of battery energy storage deployed globally through 2023. However, energy storage for a 100% renewable grid brings in many new challenges that cannot be met by existing battery technologies alone.



A battery energy storage system (BESS) captures energy from renewable and non-renewable sources and stores it in rechargeable batteries (storage devices) for later use. A battery is a Direct Current (DC) device and when needed, the electrochemical energy is discharged from the ???



Lithium-ion battery recycling exists, but not nearly on the scale and at the efficiency we need it to as batteries become more and more popular. Installing stationary battery storage on federal property. Start your home ???



OverviewConstructionSafetyOperating characteristicsMarket development and deploymentSee also

HOW LONG DOES IT TAKE FOR THE ENERGY STORAGE LITHIUM BATTERY TO START WORKING



Installing a home-energy storage system is a long-term investment to make the most of your solar-generated energy and help cut your energy bills. of the safety of home energy storage systems in 2020 said that "there have been few recorded fires involving domestic lithium-ion battery storage systems". Keep your boiler working in freezing