

HOW MANY HOURS OF ENERGY STORAGE



What is energy storage? Energy storage involves converting energy from forms that are difficult to store to more conveniently or economically storable forms. Some technologies provide short-term energy storage, while others can endure for much longer. Bulk energy storage is currently dominated by hydroelectric dams, both conventional as well as pumped.



What type of energy storage is available in the United States? In 2017, the United States generated 4 billion megawatt-hours (MWh) of electricity, but only had 431 MWh of electricity storage available. Pumped-storage hydropower (PSH) is by far the most popular form of energy storage in the United States, where it accounts for 95 percent of utility-scale energy storage.



How long can energy storage last? The NREL team, led by Dr. Chad Hunter, compared the monetary costs and revenues of fourteen different energy storage technologies that can operate for 12 hours or more. They published their results in the journal Joule.



What is the power capacity of a battery energy storage system? As of the end of 2022, the total nameplate power capacity of operational utility-scale battery energy storage systems (BESSs) in the United States was 8,842 MW and the total energy capacity was 11,105 MWh. Most of the BESS power capacity that was operational in 2022 was installed after 2014, and about 4,807 MW was installed in 2022 alone.



How long does a battery storage system last? For example, a battery with 1 MW of power capacity and 4 MWh of usable energy capacity will have a storage duration of four hours. Cycle life/lifetime is the amount of time or cycles a battery storage system can provide regular charging and discharging before failure or significant degradation.

HOW MANY HOURS OF ENERGY STORAGE



Why do energy storage devices need to be able to store electricity? And because there can be hours and even days with no wind, for example, some energy storage devices must be able to store a large amount of electricity for a long time.



Electrical Energy Storage (EES) refers to systems that store electricity in a form that can be converted back into electrical energy when needed. 1 Batteries are one of the most common forms of electrical energy storage. The first battery???called Volta's cell???was developed in 1800. 2 The first U.S. large-scale energy storage facility was the Rocky River Pumped Storage plant in ???



The overall load represents the total energy consumption in a day, encompassing the energy used by individual loads and other devices powered by the solar battery storage system. For instance, if a lead-acid battery has a maximum discharge rate of 50 amps, the total load should remain below this threshold to prevent battery damage and ensure

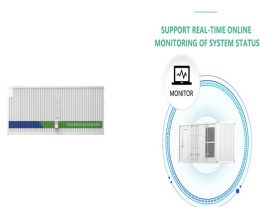


Storage capacity: This indicates how much energy a battery can hold and is measured in kilowatt-hours (kWh). A kWh is a measure of how much energy you use. It's equal to the amount of power you'd use if you kept a 1,000-watt appliance running for an hour. So a 2,000-watt oven would use one kWh of energy in 30 minutes of operation.



Your comprehensive guide to battery energy storage system (BESS). Learn what BESS is, how it works, the advantages and more with this in-depth post. Rated Energy Storage Capacity is the total amount of stored energy in kilowatt-hours (KWh) or megawatt-hours (MWh). Capacity expressed in ampere-hours (100Ah@12V for example).

HOW MANY HOURS OF ENERGY STORAGE



In an effort to track this trend, researchers at the National Renewable Energy Laboratory (NREL) created a first-of-its-kind benchmark of U.S. utility-scale solar-plus-storage systems. To determine the cost of a solar-plus-storage system for this study, the researchers used a 100 megawatt (MW) PV system combined with a 60 MW lithium-ion battery that had 4 hours of storage (240 ???)



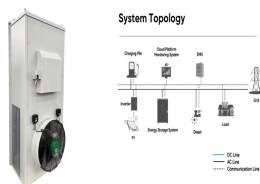
Grid-scale battery storage is a mature and fast-growing industry with demand reaching 123 gigawatt-hours last year. Some of the largest energy storage investors in the UK include funds managed



Tehachapi Energy Storage Project, Tehachapi, California. A battery energy storage system (BESS) or battery storage power station is a type of energy storage technology that uses a group of batteries to store electrical energy. Battery storage is the fastest responding dispatchable source of power on electric grids, and it is used to stabilise those grids, as battery storage can ???



Kilowatts vs kilowatt-hours in solar power & battery storage: Power, energy or capacity? By Jeff Sykes on 7 August, 2023. Energy (kilowatt-hours, kWh) Energy, on the other hand, is more a measure of the "volume" of electricity ??? power over time. You'll usually hear (and see) energy referred to in terms of kilowatt-hour (kWh) units.



Given the average solar battery is around 10 kilowatt-hours (kWh), most people need one battery for backup power, two to three batteries to avoid paying peak utility prices, and 10+ batteries to go completely off-grid. To save the most money with solar batteries, you need enough energy storage to keep your home self-sufficient during peak

HOW MANY HOURS OF ENERGY STORAGE



Determine energy (MWh): Based on the above needs for total power capacity, perform a state of charge (SOC) analysis to determine the needed duration of the energy storage system (typically 30 minutes to 2 hours).



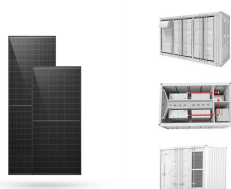
The length of energy storage technologies is divided into two categories: LDES systems can discharge power for many hours to days or even longer, while short-duration storage systems usually remove for a few minutes to a few hours. It is impossible to exaggerate the significance of LDES in reaching net zero.



A technology called energy storage can store renewable electricity during the day and discharge it when needed, for instance, during a late-night dishwasher run. Most energy storage technologies can perform continuously for four to six hours. But to support 80% renewables, energy storage must last longer: between 12 and 120 hours.



The lake stores enough water and thus enough energy to do that for 20 hours. Pumped storage hydropower, as this technology is called, is not new. Some 40 U.S. plants and hundreds around the world are in operation. Most, like Raccoon Mountain, have been pumping for decades. But the climate crisis is sparking a fresh surge of interest.



Text from the March 24, 2021, H2IQ Hour webinar presentation, "Long-Duration Energy Storage Using Hydrogen and Fuel Cells." Skip to main content Enter the terms you wish to search for. Search we have 56 kilowatt hours of energy to produce each kilogram of hydrogen that is co-produced. Also, we specify a percentage of time that the system



How many deep cycle batteries will I need? The amount of battery storage you need is based on your energy usage. Energy usage is measured in kilowatt hours. For example, if you need 1,000 watts for 8 hours per day, then your energy usage is 8kWh per day. A battery capacity of 4 to 8 kWh

HOW MANY HOURS OF ENERGY STORAGE

is usually sufficient for an average four-person home.

HOW MANY HOURS OF ENERGY STORAGE



Volumetric energy density tells use how many Watt hours can be fitted into 1 litre Mass energy density tells use how many Watt hours can be fitted into 1 kilogram. How much battery capacity / mass / volume is needed to provide a certain number of Joule can be determined from data for the battery chemistry used.



The market potential of diurnal energy storage is closely tied to increasing levels of solar PV penetration on the grid. Economic storage deployment is also driven primarily by the ability for storage to provide capacity value and energy time-shifting to the grid. Scott Machen, and Nate Blair, describe significant market potential for



If you want to convert between amp-hours and watt-hours or find the C-rate of a battery, give this battery capacity calculator a try. It is a handy tool that helps you understand how much energy is stored in the battery that your smartphone or a drone runs on. Additionally, it provides you with step-by-step instructions on how to calculate amp-hours and watt-hours, so ???



The capacity of the Form battery to dispatch energy for 100 hours, he said, "puts it in a different category" than the broad definition of long-duration storage, generally defined as systems with



The size of your Energy Storage System(ESS) is one of the most important factors in determining the price and installation for your Energy System. Knowing what size (ESS) you will need will be directly impacted by how much energy you currently use or anticipate using. How many hours or days do you need energy storage? * Section 5: Other

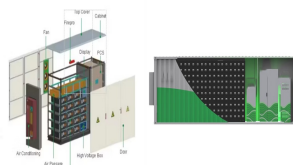
HOW MANY HOURS OF ENERGY STORAGE



In simpler terms, it represents the energy storage capacity of a battery. So, a higher Ah rating means a battery can store more energy and, in turn, power your devices for a longer period of time. It indicates how many hours a battery can sustain a certain discharge rate before it is fully drained. For example, a battery with a 10ah rating



A guide to energy storage v1.2 12 June 2017 1/11 A guide to energy storage Factsheet Energy storage What is energy storage? Using energy storage at home comes with many more considerations than just the equipment. In the thermal store for many hours due to the highly insulated sides of the unit. Thermal stores can have a single heating



Usable storage capacity is listed in kilowatt-hours (kWh) since it represents using a certain power of electricity (kW) over a certain amount of time (hours). To put this into practice, if your battery has 10 kWh of usable storage capacity, you can either use 5 kilowatts of power for 2 hours ($5 \text{ kW} * 2 \text{ hours} = 10 \text{ kWh}$) or 1 kW for 10 hours.



MITEI's three-year Future of Energy Storage study explored the role that energy storage can play in fighting climate change and in the global adoption of clean energy grids. Replacing fossil ???



Through the brilliance of the Department of Energy's scientists and researchers, and the ingenuity of America's entrepreneurs, we can break today's limits around long-duration grid scale energy storage and build the electric grid that will power our clean-energy economy???and accomplish the President's goal of net-zero emissions by 2050.



Storage devices can save energy in many forms (e.g., chemical, kinetic, or thermal) and convert them back to useful forms of energy like electricity. (10-100 hours). Extended discharge of storage systems can enable long-lasting backup power and even greater integration of renewable

HOW MANY HOURS OF ENERGY STORAGE

energy. Even longer duration storage technologies

HOW MANY HOURS OF ENERGY STORAGE



FPL announced the startup of the Manatee solar-storage hybrid late last year, calling it the world's largest solar-powered battery this week. The battery storage system at Manatee Solar Energy Center can offer 409 MW of capacity and 900 MWh of duration.. Duke Energy also expanded its battery energy storage technology with the completion of three ???



It can be compared to the output of a power plant. Energy storage capacity is measured in megawatt-hours (MWh) or kilowatt-hours (kWh). Duration: The length of time that a battery can be discharged at its power rating until the battery must be recharged. The three quantities are related as follows: $\text{Duration} = \text{Energy Storage Capacity} / \text{Power Rating}$



This inverse behavior is observed for all energy storage technologies and highlights the importance of distinguishing the two types of battery capacity when discussing the cost of energy storage. Figure 1. 2021 U.S. utility-scale LIB storage costs for durations of 2???10 hours (60 MW DC) in \$/kWh. EPC: engineering, procurement, and construction



The energy capacity of a storage system is rated in kilowatt-hours (kWh) and represents the amount of time you can power your appliances. Energy is power consumption multiplied by time: kilowatts multiplied by hours to give you kilowatt-hours. To understand the energy sizing of batteries, you need to know how long you want to run your