

HOW MANY PHASES DOES THE SOLAR POWER METER HAVE



What are the different types of solar metering? Generally, there are two main categories of meters used with solar systems: utility meters and solar system meters. Utility meters are installed by your electricity provider and track the flow of electricity to and from your home. Depending on your net metering program, you might have one of these types:



Can I have a single phase solar system? You can have a single phase solar system but it's best to connect all your typical daytime loads to that phase. You can have two single phase inverters as well but it will probably be best served with a 3 phase consumption meter either way. Out in the country they often have Single Wire Earth Return supplies strung across long distances.



What is a solar power meter? A solar power meter is a device that measures solar power or sunlight in units of W/m^2 , either through windows to verify their efficiency or when installing solar power devices. Solar meters accumulate PV yield production and local energy consumption to monitor and analyze PV plant performance.



Will a 3 phase smart meter scale up across all energy suppliers? The development of 3 phase smart meters, which would let these properties participate in SEG payments, is ongoing. In August, Good Energy completed the UK's first 3 phase smart meter installation at a domestic property: How soon this can be scaled up across all energy suppliers remains to be seen.



How does solar metering work? When you install solar, the original meter gets replaced with a bi-directional (or a 'Buy/Sell') meter. This bi-directional meter is what makes net metering possible by measuring solar energy production as well as any electricity that you are also buying from the utility company.

HOW MANY PHASES DOES THE SOLAR POWER METER HAVE



Should newbuilds have 3 phase Smart Meter installations? (Indeed there have been calls for all newbuilds to have 3 phases by default to allow for larger solar installations.) The development of 3 phase smart meters, which would let these properties participate in SEG payments, is ongoing. In August, Good Energy completed the UK's first 3 phase smart meter installation at a domestic property:



What Is a Three Phase Meter? Three Phase Meters, also known as 3 Phase Energy Meters or 3 Phase Smart Meters, are advanced energy measurement devices designed to accurately measure electricity consumption in properties connected to a three-phase electricity supply. Unlike single-phase meters that measure power consumption in residential homes, 3 phase a?



At the point when you introduce solar panels, your smart meter solar power can follow how much solar energy you're creating, the amount you're utilising, and how much abundance of energy you're sending out back. This data assists you with streamlining your energy use and possibly bringing in cash through plans like the Smart Export Guarantee (SEG).



\$150 single phase a?? \$300 three phase: NT: \$100: TAS: FREE: SA: \$425 single phase a?? \$795 three phase: Switchboards and meters: Need to know more? Do you have further questions about switchboards and meters in relation to a?



Contents. 1 Key Takeaways; 2 What is a Smart Meter for Solar Panels?. 2.1 Types of Smart Meters; 2.2 How Smart Meters Work with Solar Panels?; 2.3 What is Net-Metering?; 2.4 Smart Meters vs. Analog Meters; 3 Are Smart a?

HOW MANY PHASES DOES THE SOLAR POWER METER HAVE



If your house has two phase 120V supply from the street you can use one or two single phase inverters but may need a three phase consumption meter. It's quite normal to have a 3 phase house with a single a?|



It needs only two wires. But, it has less power than three-phase power. Industrial and commercial spaces often go for three-phase power. It uses three conductor wires and one neutral wire for more power. what is single phase energy meter. A single-phase power supply uses a neutral and a phase cable to share AC power with a circuit.



If consolidating to one meter is not possible or practical then you must share the solar array by allocating a fixed number of panels on the roof to each residence and then either having 2 separate inverters, one for each meter, or micro inverters, and sharing the micro inverters between residences. You essentially have 2 separate systems sharing one roof.



More than 1.3 million UK homes now have solar panels. The number of installations in 2023 was a 12-year high a?? a 30% increase on the previous year. Unlike carbon fuels a?? coal, natural gas, and oil a?? solar power combats climate change. Solar panels leave a minimal carbon footprint and emit no greenhouse gases.



Related reading: How To Choose Solar Panels for Your Home. Calculate how many solar panels it takes to power a house. Now that we have our three variables, we can calculate how many solar panels it takes to power a house. Daily electricity consumption: 30 kWh (30,000 Watt-hours)
Average peak sun hours: 4.5 hours per day; Average panel wattage: 400W

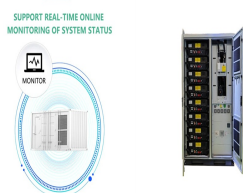
HOW MANY PHASES DOES THE SOLAR POWER METER HAVE



A solar inverter's maximum output DOES NOT relate to the solar capacity able to be installed. Getting AC output confused with the DC capacity of the solar array could cost you GBP000's in the long run by not using the solar panel inverter to a?



If your solar panels are generating over 1,200W at a particular time, you would be able to power a 300W fridge-freezer, an 800W microwave and a number of small appliances like your a?



Building on this basic introduction to PV monitoring, we explain in this article the major types of solar panel meters required throughout the different stages of a common solar energy project. Solar energy a?



How Many Solar Panels do I Need? There is quite a difference when it comes to the capabilities and performance levels of solar panels, and so the quality can really make a difference. PV solar panels tend to vary between 250w to 460w per panel, depending on the size of it and the cell technology used to create each of the modules.



A connection limit restricts the size of the inverter that can be connected to the grid. If the connection limit is, for example, 10 kW per phase, you could connect a 10 kW inverter if your grid connection is single-phase. If you have a three-phase connection you could install a three-phase inverter up to 30 kW.

HOW MANY PHASES DOES THE SOLAR POWER METER HAVE



If you have a 3-phase solar inverter connection, on the other hand, the electricity entering your home is divided into three separate phases (imagine three cables/circuits). HI, we have 3 phase power in our home, firstly I have quoted for \$4000 for 5 KW with 24x260kw single phase, After some time consultant came back to me and said you



What role does calibration play in the accuracy of a three-phase meter, and how does SolarClue(R) guide consumers in ensuring their meters are calibrated for precise energy measurements? What are some off-grid alternatives to solar power? 07/12/2023 11/01/2024 Yasaswini O. Leave a Reply Cancel reply. Your email address will not be published



Single phase Vs 3 phase Meter connection. If you are planning to install solar power, you have most likely been doing some digging around the internet. You quickly learn that one of the most important components of a solar system is the inverter. You need to pick either a single-phase or a three-phase inverter.

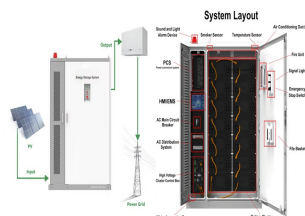


The average home needs 8 to 13 panels for a 4kW system to cover its electricity needs (2,700kWh annually on average).; A 2 bedroom house requires 4 to 8 panels, a 3 bedroom house needs between 8 and 13 panels, while a 4 or 5 bedroom household in the UK will need 13 to 16 solar panels, on average depending on household energy consumption and the wattage a?|

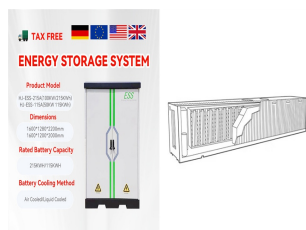


So, what is a three-phase inverter and how does it operate? An inverter is the device responsible for converting the direct current (DC) power generated by sources like solar panels into alternating current (AC) power a?? suitable for use in homes, businesses, and industrial applications.. A three-phase inverter distinguishes itself by transforming DC power into three a?|

HOW MANY PHASES DOES THE SOLAR POWER METER HAVE



Why Your Utility Meter Should Also be a Net Meter or Smart Meter. Most solar systems are not independent of the utility grid. These systems are called grid-tied systems, and combine the cost-saving, energy-independence elements of off-grid solar power with the easily accessed electricity from the power grid.. You can offset 100% of your usage with a grid-tied solar system.



Q3: What are our battery options for three phase systems? A: The SolarEdge SExK-AUB three phase residential inverters are planned to have the SolarEdge Home Battery installed as part of the system later on in 2022 as the input voltage is the same as the single phase inverters. However, further integration is still required.



3-phase solar panels. 3-phase solar systems use standard solar panels, the same as single-phase systems. However, because 3-phase systems are designed to supply more power at once, a larger solar panel array may be a?]



The ideal property for solar panels would have a decent amount of space on its roof - typically we look for homes that can manage at least eight panels, but ideally it should be able to fit ten or more. We choose the a?]



Single-phase solar (left) vs 3-phase solar (right). What About 2 Phase Power? Two-phase power supplies are also quite common in Australia. Two-phase power has two service fuses rather than one or three. Three-phase power monitors and sub-meters; Note: if you have two-phase power, install a 3-phase device and leave one phase unused. Next

HOW MANY PHASES DOES THE SOLAR POWER METER HAVE



3 phase smart metering. In the UK, the majority of domestic properties have a single phase electricity connection. But some homes with higher power demands, for instance if they have a heat pump, are upgraded a?|



On the one hand, if you don't have a solar battery, you'll most likely end up losing around 50% of the power your solar panels produce, with all the surplus energy going straight to the grid. On the other hand, solar batteries tend to cost around GBP4,216 for a 2.1kWp system, which can be a barrier for many a?? you'll also need to buy two of these throughout a a?|



You can tell if you have 3-phase power by looking at your electrical meter. If your meter has four wires, then you have 3-phase power. Solar Quotes) If it is a digital meter, you'll need to look at the display. A 3 phase meter will show L1, L2 and L3. A 3 phase meter in Australia (Source: MC Electrical)



When your solar PV system is installed you may need to have a new meter installed. If you have a traditional accumulation meter (with a spinning disk) this will need to be replaced with an interval meter or smart meter. This is because an accumulation meter does not record the energy you export to the grid or the electricity you import from the