

# HOW MANY PHOTOVOLTAIC PANELS MAKE UP A SET OF PANELS



Solar panels usually come with two types of warranties: a product warranty and a performance warranty. The product warranty covers defects in the solar panel itself and typically covers around 20-25 years, although some ???

114KWh ESS



Finally, pick a solar panel power rating. The final variable is how much electricity each solar panel can produce per peak sun hour. This is called power rating and it's measured in Watts. Solar panel power ratings range from 250W to 450W.



solar panels can help achieve this. Once you've covered the upfront cost of installing solar panels you can enjoy cheaper bills for years to come. ??? Reduce your carbon footprint By harnessing low carbon solar electricity, a typical home solar panel system could save around 800kg of carbon a year depending on where you live in the UK.



If your solar panel's performance warranty guarantees 80% performance after 25 years, then their degradation rate is calculated as  $20\%/25$  years, or 0.8% production loss each year. By the end of its lifecycle, a 400W-rated panel would only output ???

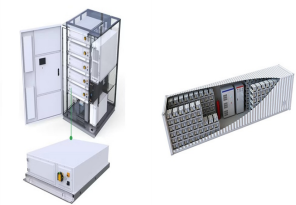


According to the Renewable Energy Hub, domestic solar panel systems usually range in size from around 1 kW to 5 kW. Allowing for some cloudier days, and some lost power, a 5 kW system can generally produce ???

# HOW MANY PHOTOVOLTAIC PANELS MAKE UP A SET OF PANELS



Select a location that's dry and well-ventilated to set up your photovoltaic system. Many choose a space like a garage or shed to house the panels. Complete your installation. Examples of solar panel setups. Small greenhouse in a mild climate: A 150-square-foot greenhouse in a region like Northern California might require around 2-4



A photovoltaic cell is the most critical part of a solar panel that allows it to convert sunlight into electricity. that is treated to allow it to interact with the photons that make up sunlight. the National Renewable Energy ???



Now you can just read the solar panel daily kWh production off this chart. Here are some examples of individual solar panels: A 300-watt solar panel will produce anywhere from 0.90 to 1.35 kWh per day (at 4-6 peak sun hours locations).; A 400-watt solar panel will produce anywhere from 1.20 to 1.80 kWh per day (at 4-6 peak sun hours locations).; The biggest 700 ???



Your solar panel needs; Your usable roof area; Solar panel dimensions; Photovoltaic cell efficiency. So, for example, if you have a small roof, it might be a good idea to invest in fewer highly efficient panels. Typically, the efficiency of solar panels ranges from 15-20%, which is already factored into the power rating shown in the panels.



How Many Solar Panels Are Needed For A 24v System? Most 24V solar systems have 3-8 panels rated for 24V. Panels are wired in series to create a total system voltage around 24V. More panels generate more wattage. What Voltage Should A Solar Panel Be For A 24v System? Look for solar panels rated for 24V operation.

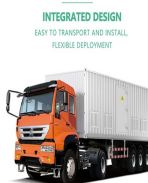
# HOW MANY PHOTOVOLTAIC PANELS MAKE UP A SET OF PANELS



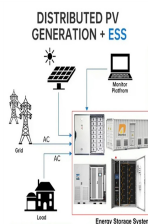
This means your solar panel system needs to produce approximately 7.4 kWh per day to cover your electrical requirements. Let's look at the average output of a 400w solar PV panel. We'll say that the UK get's 3.5hrs peak sunlight per day on average. As a simple equation, a 400w panel on average will produce  $400 \times 2.5$  per day = 1 kWh/day.



A solar panel's metal frame is useful for many reasons; protecting against inclement weather conditions or otherwise dangerous scenarios and helping mount the solar panel at the desired angle. When light interacts with a silicon cell, it causes electrons to be set into motion, which initiates a flow of electricity. This is known as the



The solar panels (the correct term is photovoltaic modules) that make up the solar panel produce electricity from the incidence of sunlight. Therefore, the greater the average solar radiation at the installation site, the ???



Each solar panel system is different ??? different panels, different location, different size ??? which means that calculating the "average" output per day depends on many factors. However, the majority of private-use solar ???



As a general guide. On a sunny day, a 100W solar panel will produce approximately 4-5 amps per hour in full sun. This means that the solar panel would take around 18-25 hours to charge a fully discharged 100AH 12v battery. A solar panel half the size (50w) would take approximately double the amount of time to charge the same size battery.

# HOW MANY PHOTOVOLTAIC PANELS MAKE UP A SET OF PANELS



Many people are already using solar panels to power their homes, yet the concept of charging electric vehicles (EVs) with solar energy remains relatively unknown. In this article, we aim to demonstrate that not only is it possible to use solar panels for car charging, but it also presents a very advantageous option from both economic and environmental perspectives.



**Solar Module Cell:** The solar cell is a two-terminal device. One is positive (anode) and the other is negative (cathode). A solar cell arrangement is known as a solar module or solar panel. A solar panel arrangement is known as a photovoltaic array. It is important to note that with the increase in series and parallel connection of modules, the power of the modules also gets added.



All solar panel strings connected in parallel have to feature the same voltage, and they also have to comply with the NEC 690.7, NEC 690.8(A)(1), and NEC 690.8(A)(2). Modules need to be the same model in all cases in order to ???



Calculating the size of the solar panel system needed for your home involves a few important steps. Understanding your energy requirements, solar panel efficiency, how sunlight affects generation, and the perks and ???



The average temperature coefficient for a solar panel is  $-0.32\%/^{\circ}\text{C}$ , which means for every degree above  $25^{\circ}\text{C}$ , a solar panel's output falls by a minuscule  $0.32\%$ . However, even if your solar panels were to reach the dizzying heights of  $50^{\circ}\text{C}$ , they would still be operating at roughly  $92\%$  of their original capacity - not a very significant loss at all.

# HOW MANY PHOTOVOLTAIC PANELS MAKE UP A SET OF PANELS



In this comprehensive guide, I'll walk through the main factors that influence solar panel quantity when using a 30 amp controller ??? from system voltage to energy usage. the voltage will be  $22.7 * 2 = 45.4V$  and this keeps the voltage at 45.5 volts but doubles the total current because each set of panels contributes its current



A solar panel is another name for a PV (photovoltaic) module. Generally, a solar panel is made up of several semiconductors called cells. There are 36 cells in a typical solar panel, for example- the Sonali 190W 12V.



If you're planning to cut your energy bills and help the climate by getting solar panels on your roof, you'll want to know exactly how much electricity they can produce and which is the most efficient solar panel. Learning about ???



Example calculation: How many solar panels do I need for a 150m 2 house ?. The number of photovoltaic panels you need to supply a 1,500-square-foot home with electricity depends on several factors, including average electricity consumption, geographic location, the type of panels chosen, and the orientation and tilt of the panels. However, to get a rough ???



For example, if you have a solar panel that has a Voc (at STC) of 40V, and a Temperature Coefficient of 0.27%/°C. Then for every degree celsius drop in panel cell temperature, the voltage will rise by:  $40V \times 0.27\% = 0.108V$ . Or if your calculator doesn't have a % sign.

# HOW MANY PHOTOVOLTAIC PANELS MAKE UP A SET OF PANELS



The sun is an inexhaustible source of energy and more and more private individuals are now investing in a solar and photovoltaic system. But it is often difficult to assess the number of panels needed to supply a house with electricity.. The number of panels to be installed depends on several factors.



6. The solar panel mounts will be installed. 7. The professionals will install the solar panels. 8. The solar panels will then be wired in (the house's electricity will be turned off at this point) 9. The solar panels will be connected ???



In this post, we'll guide you through the process of starting a solar panel business, from insurance to market research. Homeowners are searching for solar panel experts on Checkatrade. In 2023, we saw over 81,000 searches for solar panel installation.\* ???



Solar panels are becoming our solution to the energy crisis that we face, but what parts make up a solar panel and system ??? that's what we'll find out. Solar panels may seem complex, but in simplicity, we just need solar ???



How Many AMP Hours Does A 200w Solar Panel Produce? On average, the 200 watt ??? 12-volt solar panel would be able to produce 60 to 100 Amp hours per day. If the solar panel is able to get direct sunlight, it would be able to produce 10 to 12 amps of energy per hour.

# HOW MANY PHOTOVOLTAIC PANELS MAKE UP A SET OF PANELS



According to the Renewable Energy Hub, domestic solar panel systems usually range in size from around 1 kW to 5 kW. Allowing for some cloudier days, and some lost power, a 5 kW system can generally produce around 4,500 kWh per year. As we saw above, the average UK home uses around 3,731 kWh per year. So a 5 kW system, or possibly a 4 kW