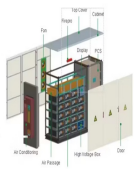
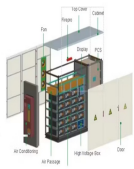


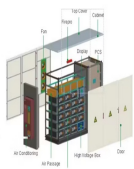
HOW MANY VOLTS IS A PHOTOVOLTAIC PANEL EQUIVALENT TO



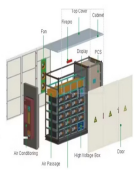
How many volts does a solar panel produce? Before learning how many volts does a solar panel produce, understand solar panels initially produce DC which is then converted into AC to generate power. Direct current (DC) and low voltage are used by the most popular kind of rooftop solar panel. Based on the particular type of panel, this low voltage ranges between 20 and 40 volts.



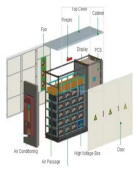
How many volts does a 100 watt solar panel produce? Typically, a 100-watt solar panel produces about 5.55Amps/18 volts of maximum power voltage. The voltage that solar panels produce when they produce electricity varies according to the number of cells and the amount of sunlight that they receive. How Many Volts Does a 200W Solar Panel Produce?



How do different solar panels affect voltage? How do different solar panel technologies affect voltage? What is the typical lifespan and degradation rate of solar panels? A single solar cell can produce an open-circuit voltage of 0.5 to 0.6 volts, while a typical solar panel can generate up to 600 volts of DC electricity.

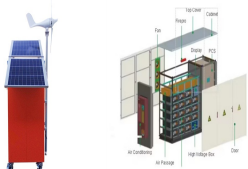


How many volts does a 200W solar panel produce? It is possible for 200w solar panels to produce voltage at a variety of levels ranging from 7 amps/28V to 11 amps/18V per hour. Also Read: What size cable for 300W solar panel? How Many Volts Does a 300W Solar Panel Produce? When a 300-watt solar panel is exposed to full sunlight for one hour, it produces an impressive 300 watt-hours (0.3 kWh).

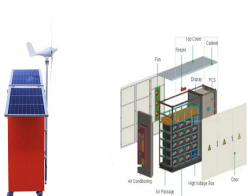


How to calculate solar panel output voltage? If you know the number of PV cells in a solar panel, you can, by using 0.58V per PV cell voltage, calculate the total solar panel output voltage for a 36-cell panel, for example. You only need to sum up all the voltages of the individual photovoltaic cells (since they are wired in series, instead of wires in parallel).

HOW MANY VOLTS IS A PHOTOVOLTAIC PANEL EQUIVALENT TO



Where does solar panel voltage come from? The solar panel voltage output comes from the photovoltaic effect. This is when sunlight hits certain materials, like silicon, in the solar cells. These solar cells are part of a solar panel. These materials can make an electric current with light, called the photovoltaic effect. Sunlight, or photons, shines on the solar cells.



To determine the voltage produced by a 300W solar panel, we need to consider the panel size, solar cell efficiency, and sunlight exposure. In optimal conditions, a 300W (0.3kW) solar panel generates 300 watt-hours ???



Inverter conversion: On average, the 200 watt ??? 12-volt solar panel would be able to produce 60 to 100 Amp hours per day. If the solar panel is able to get direct sunlight, it would be able to produce 10 to 12 amps ???



To find the solar panel output, use the following solar power formula:
output = solar panel kilowatts x environmental factor x solar hours per day
. The output will be given in kWh, and, in practice, it will depend on how sunny it is since the number of solar hours per day is just an average.



For example, let's consider a 200-watt solar panel. The amperage it can produce will depend on the voltage output. If the solar panel operates at 12 volts, the calculation would be as follows: 200 watts / 12 volts = approximately 16-17 amps. On the other hand, if the solar panel operates at 24 volts, the amperage would be halved to around 8-9

HOW MANY VOLTS IS A PHOTOVOLTAIC PANEL EQUIVALENT TO



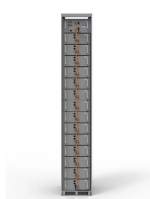
If you know the number of PV cells in a solar panel, you can, by using 0.58V per PV cell voltage, calculate the total solar panel output voltage for a 36-cell panel, for example. You only need to sum up all the voltages of the individual ???



How Many Volts Does A 200 Watt Solar Panel Produce? A typical 200W/12V solar panel produces a peak voltage of 21V and a current of 9.52A. A 200W/12V solar panel has an area of about 1,550-1,650 sq ft. To reach 18 volts, you need a high quality solar panel like the one from the company SolarWorld. A 200 watt solar panel produces 21 volts and 9.



Key Takeaways. A single solar cell can produce an open-circuit voltage of 0.5 to 0.6 volts, while a typical solar panel can generate up to 600 volts of DC electricity.; The voltage output of a solar panel depends on factors like the amount of sunlight, electrical load, and panel design. Monocrystalline solar panels tend to be more efficient and have a higher voltage ???



Solar Panel Calculator is an online tool used in electrical engineering to estimate the total power output, solar system output voltage and current when the number of solar panel units connected in series or parallel, panel efficiency, total area and total width. These estimations can be derived from the input values of number of solar panels, each panel unit power and voltage, width and



A single solar cell can produce an open-circuit voltage of 0.5 to 0.6 volts, while a typical solar panel can generate up to 600 volts of DC electricity. The voltage output of a solar panel depends on factors like the amount of ???



A panel with 72 cells typically has a voltage of between 36 and 48 volts. This comprehensive guide aims to demystify the concept of solar panel voltage, delving into its definition, typical ranges, professional terminology, ???

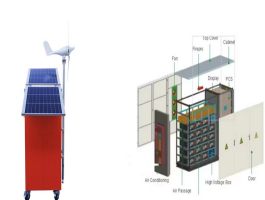


Web: <https://www.twojaelektryka.com.pl>

HOW MANY VOLTS IS A PHOTOVOLTAIC PANEL EQUIVALENT TO



Note! 1kw is equal to 1000 watt How to get the maximum output from your solar system. and also if the voltage of solar panel and battery is different (e.g 24v battery and 12v solar panel then using a PWM charge controller will be a really bad choice).



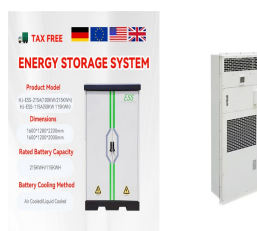
If your battery bank voltage is different, the current supplied will change:
Considering 12% losses = 88 % efficiency (100% - 12%) : $I = 200w / 12v * 0.88 = 14.67A$ for 12 volt battery bank $I = 200w / 24v * 0.88 = 7.33A$ for 24 volt battery bank $I = 200w / 48v * 0.88 = 3.67A$ for 48 volt battery bank This is how you could calculate precisely how many amps your ???



100-watt solar panel will store 8.3 amps in a 12v battery per hour.
300-watt solar panel will store 25 amps in a 12v battery per hour. 400-watt solar panel will store 33.3 amps in a 12v battery per hour. 500-watt solar panel will store 41.6 amps in a 12v battery per hour. 600-watt solar panel will store 50 amps in a 12v battery per hour.

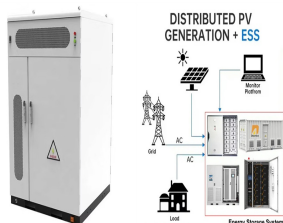


A 12v 150 watt solar panel will produce about 18.3 volts and 8.2 amps under ideal sunlight conditions. (inc. 1kw/m² of sunlight intensity, no wind, and 25 o C temperature). The above values are based on DC (Direct current) ???

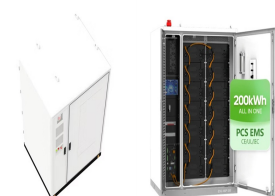


The formula to calculate the voltage of a solar panel is: $[V = \frac{P}{I}]$
where: (V) is the output voltage in volts (P) is the power in watts Solar Panel Conversion Efficiency Calculator: Solar Panel Azimuth Angle Calculator: Solar Irradiance By Zip Code Calculator:

HOW MANY VOLTS IS A PHOTOVOLTAIC PANEL EQUIVALENT TO



200w solar panel output will depend on many factors. To make it easy for you, i have created solar output calculator which you can use.. 200 watts of power is equal to 16.6A @12 volts or 1.6A @120 volts. 200 watts of ???



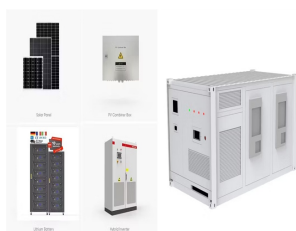
The voltage output of a 300W panel is approximately 240 volts, equivalent to 1.25 amps. How Many Volts Does a 500W Solar Panel Produce? In the past decade, standard solar panels ranged from 200-300 watts, but now ???



For example, a solar panel with a voltage of 20V and an amperage of 5A has a wattage of 100W. This means the panel can produce 100 watts of power under optimal conditions. Since optimal conditions are impossible to achieve at all times, I usually recommend to estimate a 70-80% efficiency when calculating how much solar you need for a specific



Quick Answer: A solar panel typically generates a voltage ranging from 5 volts for small, portable panels to around 30 to 40 volts for standard residential panels under full sun.. What Is Solar Panel Voltage? ???



2. Enter the panel's max power voltage (denoted V_{mp} or V_{mpp}). It may also be called the optimum operating voltage. 3. Enter the panel's max power current in amps (denoted I_{mp} or I_{mpp}). It may also be called the optimum operating current. 4. In the Quantity field, enter the number of this type of solar panel you'll be wiring together. 5.

HOW MANY VOLTS IS A PHOTOVOLTAIC PANEL EQUIVALENT TO



A single solar cell has a voltage of about 0.5 to 0.6 volts, while a typical solar panel (such as a module with 60 cells) has a voltage of about 30 to 40 volts. panels are suitable for charging batteries directly or powering low-voltage DC devices without the need for additional voltage conversion equipment. They offer simplicity and ease



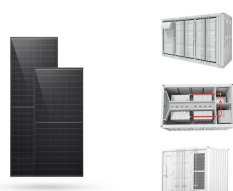
Solar panels are a revolutionary technology in renewable energy, converting sunlight into electricity to power homes, businesses, and gadgets. A fundamental question many people have is, "How many volts does a solar panel produce?" Understanding this can help you determine the suitability of solar panels for your energy needs.



To calculate the power (watts) provided by a solar panel we need to know the size of the electrical wave (volts) and the force of the current (amps) behind the wave. Most solar panels list two current values: Maximum ???



PV panels vary in size and in the amount of electricity they can produce. Electricity-generating capacity for PV panels increases with the number of cells in the panel or in the surface area of the panel. PV panels can be connected in groups to form a PV array. A PV array can be composed of as few as two PV panels to hundreds of PV panels. The



How Many Volts Does a 100-Watt Solar Panel Produce? The output voltage of a 100-watt solar panel typically ranges from 17 to 18 volts. This voltage is suitable for charging 12V batteries and powering small-scale off-grid applications such as lighting or small electronic devices. How Many Volts Does a 200-Watt Solar Panel Produce? Like the 100

HOW MANY VOLTS IS A PHOTOVOLTAIC PANEL EQUIVALENT TO



How many volts does a solar panel produce? A solar panel typically produces 0.5 Volts per cell, with the total voltage depending on the number of cells. What is the difference between AC and DC power? Solar ???



Understanding these various factors will help you make informed decisions when installing and maintaining your solar panel system for maximum efficiency and long-term savings. Calculating the Voltage of a 100 Watt Solar Panel. Calculating the Voltage of a 100 Watt Solar Panel. So, you've got yourself a shiny new 100 watt solar panel.