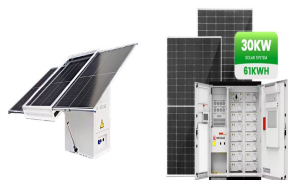


HOW MANY WATTS ARE THERE IN A 310 PHOTOVOLTAIC PANEL



How much power does a 400 watt solar panel produce? A 400 W solar panel can produce around 1.2-3 kWh or 1,200-3,000 Wh of direct current (DC). The power produced by solar panels can vary depending on the size and number of your solar panels, the efficiency of solar panels, and the climate in your area. How many solar panels are needed to run a house?



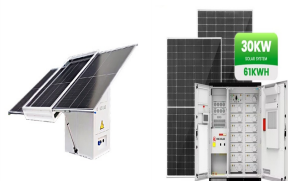
How many Watts Does a solar panel use per square foot? Dividing the specified wattage by the square footage of the solar panel will give us just this result: The average solar panel output per area is 17.25 watts per square foot. Let's say that you have 500 square feet of roof available for solar panel installation. What is theoretically the biggest solar system you can put on that roof?



How much electricity can a 430 watt solar panel produce? Solar panels are usually around 2m², which means the typical 430-watt model will produce 372kWh across a year. A solar panel system will need space on either side, so finding out your roof's area is only one part of working out how much solar electricity you can generate, but it's a great first step.

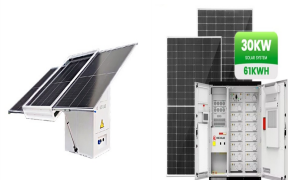


How much power do solar panels provide? Nearly 30% told us that their solar panels provided between a quarter and a half of the total electricity they needed over a year. There's a huge seasonal variation in how much of your power solar panels can provide. Read our buying advice for solar panels to see how much of your power solar panels could generate in summer.



How many solar panels do I Need? The number and size of your solar panels depend on the size of your property and energy demands. A 4kW solar system is one of the most popular sizes for domestic solar systems, as it is typically appropriate for homes with 3 to 4 people. So in this case, you'd need something like 10 solar panels installed on your roof, each at a power of 400 kW.

HOW MANY WATTS ARE THERE IN A 310 PHOTOVOLTAIC PANEL



How many kW is a 20 watt solar panel? Usually, it is 1.2 to 1.5 which is multiplied by the desired output. For example with a 20% buffer, the required solar panel output with Buffer (Watts) = $6 \text{ kW} \times 1.20 = 7.2 \text{ kW}$. Nevertheless, when you are choosing solar panels make sure their power ratings equal or surpass the required output to meet your energy needs and preferences.



If you decided on the more powerful monocrystalline solar panel system with an output of 400 watts, there are a few calculations you need to do to find the number of panels needed. Since we have a 5kW system, which ???



How much power or energy does solar panel produce will depend on the number of peak sun hours your location receives, and the size of a solar panel. just to give you an idea, one 250-watt solar panel will produce about 1kWh of energy/electricity in one day with an irradiance of 5 peak sun hours. Here's a chart with different sizes of solar panel systems and ???



Some common solar panel system sizes include a 3kW solar panel system, a 4 kilowatt solar panel system and a 5kW solar panels. For instance, a typical 2kW solar panel system suited for 1-3 people will need anywhere between 5 and 8 solar panels (for 350W panels).



The average home needs 8 to 13 panels for a 4kW system to cover its electricity needs (2,700kWh annually on average).; A 2 bedroom house requires 4 to 8 panels, a 3 bedroom house needs between 8 and 13 panels, while a 4 or 5 bedroom household in the UK will need 13 to 16 solar panels, on average depending on household energy consumption and the wattage ???

HOW MANY WATTS ARE THERE IN A 310 PHOTOVOLTAIC PANEL



watt solar panels is good for 1500 watts so you can start there. You can use other solar panel combinations as long as the total output is at least 2000 watts an hour. However, a 300 watt PV module or larger is ideal because it does not take up as much space as a 200W or 100W solar array. How Long Will a 2000 Watt Solar Panel Last



How many amps does a 40-watt solar panel produce. To calculate the value of amps or current use this formula ($\text{Amps} = \text{Watt/Volts}$) During this conversion, there will be some power loss of about 15-5% (depending on the inverter efficiency rate) so most of the inverters are about 85-90% efficient.



In the example you see above, there's an "Output Tolerance" rating of -3% to 3%. This means that, under ideal conditions, the 100W solar panel could generate between 97 and 103 Watts of power. For instance, the 100-watt solar panel from our example has a V_{mp} rating of 17.8 Volts, which means that under the STCs, this solar panel will



From the above, we gather that a household with 1-2 people typically uses around 1800 kWh of electricity each year, which means they'd need about 6 solar panels to generate around 1590 ???



The only difference between a solar panel's efficiency and its rated wattage is that a high efficient solar panel will take less space to produce the same amount of power than a low efficient solar panel. For example, a 300 watt solar panel with 15% efficiency will produce the same amount of power that a 20% efficient 300 watt solar panel will

HOW MANY WATTS ARE THERE IN A 310 PHOTOVOLTAIC PANEL



How many watts per square foot can a solar panel generate? Dividing the specified wattage by the square footage of the solar panel will give us just this result: The average solar panel output per area is 17.25 watts per square foot .



So there will be a 10% power loss when converting DC into AC. For Example. Here in Florida, 300-watt Solar Panel: FAQs How many batteries do i need for a 300-watt solar panel? For a 300-watt solar panel, a 12v 150Ah ???



Most home solar modules installed in 2023 have a solar panel wattage rating between 350 and 470 watts of power. However, the actual solar panel output depends on factors such as shading, orientation, and hours of sun exposure. A 400-watt panel in a sunny climate can produce about 600 kWh of electricity per year, or approximately 1.6 kWh daily.



A 12v 150 watt solar panel will produce about 18.3 volts and 8.2 amps under ideal sunlight conditions. (inc. 1kw/m² of sunlight intensity, no wind, and 25 o C temperature). The above values are based on DC (Direct current) output, but to run most of the household appliances we need AC (Alternating current)

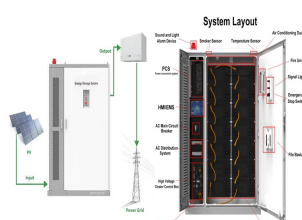


For example, if a 300-watt (0.3kW) solar panel in full sunshine actively generates power for one hour, it will have generated 300 watt-hours (0.3kWh) of electricity. That same 300-watt panel produces 240 volts, which equals 1.25 Amps. Unfortunately, solar panels don't generate a steady stream of electricity all day.

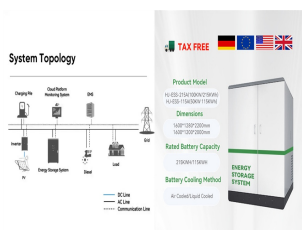
HOW MANY WATTS ARE THERE IN A 310 PHOTOVOLTAIC PANEL



1. Find the technical specifications label on the back of your solar panel.
Note: If your panel doesn't have a label, you can usually find its technical specs in its product manual or on its online product page. There ???



Your solar panel's efficiency refers to how much sunlight it can convert into electricity. And it may surprise you that no solar panel is 100% efficient. Depending on the model and manufacturer, solar panel efficiency usually hovers between 13% to 22%. The higher the efficiency of your solar panel, the higher its power output.



What is a 300 Watt Solar Panel? A 300-watt solar panel is a large solar panel capable of generating up to 300 watts of electricity under optimal conditions. Solar panels are typically used as part of a solar energy system to generate electricity for homes and businesses. The size of a solar panel is measured in watts, and a 300-watt solar panel

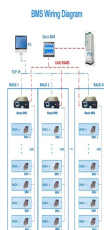


There are 1000 watts in one kWh. As an example, if you switched on a 100w light bulb, it would take ten hours to use one kWh. Some solar panel installers may give an estimated quote over the phone or online, but as solar ???



There is a lot of disagreement on how many watts can solar panels produce per square foot. Some say as little as 10 watts per square foot; others say it's 20+ watts per square foot. The truth, as usual, is somewhere in between. Solar Panel Wattage (Watts): Area (Square Feet): Watts Per Square Foot: 100 Watts: 6.07 Square Feet: 16.47 Watts

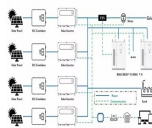
HOW MANY WATTS ARE THERE IN A 310 PHOTOVOLTAIC PANEL



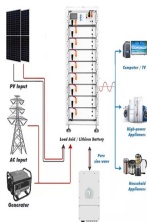
Now you can just read the solar panel daily kWh production off this chart. Here are some examples of individual solar panels: A 300-watt solar panel will produce anywhere from 0.90 to 1.35 kWh per day (at 4-6 peak sun hours locations).; A 400-watt solar panel will produce anywhere from 1.20 to 1.80 kWh per day (at 4-6 peak sun hours locations).; The biggest 700 ???



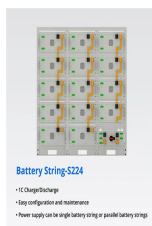
At this point in the day, the clouds had rolled in, so my watt meter measured an output of 24.4 watts from my 100 watt solar panel. As you can in the photo, you can also use a power meter to measure solar panel amps (1.86A) and voltage (13.14V).



So, how many volts does a solar panel produce? Although there are currently cells available with a size of 158 mm * 158 mm, Moreover, to charge a 100 Ah 12V battery you need 310 to 380 watts solar panel ???



A solar panel wattage calculator can help optimize your solar power system for maximum efficiency and cost-effectiveness. This calculator considers variables such as panel efficiency, sunlight intensity, and environmental conditions, ???



There are three main solar panel sizes: 60-cell, 72-cell, and 96-cell. 60-cell and 72-cell solar panels are more common since their size is more practical for households. Apart from size, various types of solar panels are characterized by energy output in Watts (W). Solar cells' efficiency in converting sunlight into electricity depends on

HOW MANY WATTS ARE THERE IN A 310 PHOTOVOLTAIC PANEL



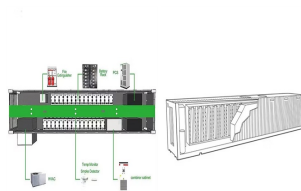
The size of a solar panel is measured in watts, which indicates the amount of power it can generate. In particular, there are solar panel kits for caravans that come with solar panels that are around four times smaller than ???



Finally, pick a solar panel power rating. The final variable is how much electricity each solar panel can produce per peak sun hour. This is called power rating and it's measured in Watts. Solar panel power ratings ???



How much electricity does a solar panel produce? Household solar panel systems are usually up to 4kWp in size. That stands for kilowatt "peak" output ??? ie at its most efficient, the system will produce that many kilowatts per ???



Now, by average solar panel wattage per square foot, we can put a 10.35kW solar system on an 800 sq ft roof. This is how many solar panels you can put on this roof: If you only use 100-watt solar panels, you can put 103 100-watt solar panels on the roof. If you only use 300-watt solar panels, you can put 34 100-watt solar panels on the roof.



Solar panel battery sizes: 100-watt solar panel. Maximum 80-100ah, but ideally a 50ah battery. 200-watt solar panel. Ideally, a battery of 100-120ah but could work for a 150ah battery too. 300-watt solar panel. Best for 24v setups, and you'll need a battery of at least 100ah to draw 1,000 watts or more, but a 200ah battery is ideal. 400-watt