

# HOW MANY WATTS OF POWER DOES A 18M PHOTOVOLTAIC PANEL HAVE



Tesla Roof Panel Area = 74.4 Inches x 41.2 Inches = 3065.28 Square Inches = 21.29 Square Feet. Now let's divide the 400W wattage by this area to get the solar output per 1 square foot: Tesla Roof Panel Watts Per Square Foot =  $400W / 21.29 \text{ Sq Ft} = 18.79 \text{ Watts Per Square Foot}$ . We have the result: Tesla roof panels produce 18.79 watts per



However, according to research, 230 to 275 watts of power can be produced by a conventional solar power panel. It is about 228.67 volts to 466 volts per hour. As per STC and suitable factors, When a 300-watt solar panel is exposed to full sunlight for one hour, it produces an impressive 300 watt-hours (0.3 kWh).



table: How Much Power Does a Solar Panel Produce. Summary. 100-watt solar panel will produce around 400 watt-hours of power per day with 5 hours of peak sunlight; 200-watt solar panel will produce around 800 watt-hours of power per day with 5 hours of peak sunlight; 400-watt solar panel will produce around 1 kilowatt-hour of power per day with



Number Of Solar Panel By Roof Size Chart. We have calculated how many of either 100-watt, 300-watt, or 400-watt solar panels you can put on roofs ranging from very little 300 sq ft roof to huge 5,000 sq ft roof, and summarized the results in a neat chart. This is a standard 10kW solar system, consisting of 25 400-watt solar panels.



If two 6-kW solar power systems are installed in different states and one of them gets 30% more sunshine during the year, energy production also increases by around 30%. a 500-watt panel will

# HOW MANY WATTS OF POWER DOES A 18M PHOTOVOLTAIC PANEL HAVE



A 12v 150 watt solar panel will produce about 18.3 volts and 8.2 amps under ideal sunlight conditions. (inc. 1kw/m<sup>2</sup> of sunlight intensity, no wind, and 25 °C temperature). The above values are based on DC (Direct current) output, but to run most of the household appliances we need AC (Alternating current)



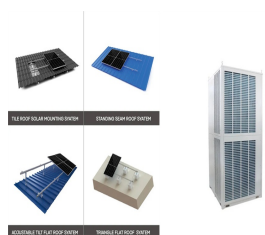
If you want to know more about solar power and the panel size, Apart from size, various types of solar panels are characterized by energy output in Watts (W). Solar cells' efficiency in converting sunlight into electricity depends on these wattage ratings. The most well-known type is 400 W solar panels, which produce an energy range of 1.2



The power rating of the solar panel in watts x??? Average hours of direct sunlight = Daily watt-hours. Consider a solar panel with a power output of 300 watts and six hours of direct sunlight per day. The formula is as follows: 300W x??? 6 = 1800 watt-hours or 1.8 kWh. Using this solar power calculator kWh formula, you can determine energy



Now we will consider these losses when finding the currents for different types of solar panels. How Many Amps Does a 200-watt Solar Panel Produce? A 200-watt solar panel will produce 1.3 amps of AC current in the US with 120 volts. However, if you live in a place with 230 volts AC grid, then this same panel will produce 0.68 amps of AC current.

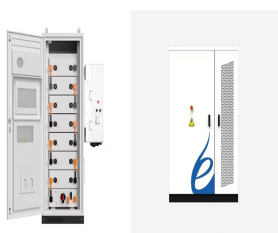


How much power does a 40-watt solar panel produce. By knowing how much power can a 40w solar panel produce will let you know the actual worth of your solar panel and also this will determine what you can run ???

# HOW MANY WATTS OF POWER DOES A 18M PHOTOVOLTAIC PANEL HAVE



Using simple math, you can easily find how many watts a solar panel produces daily, weekly, and year. If your solar panel produces 200 watts an hour and you have 6 hours of sun exposure daily, then the solar power production of your panel is; Solar power daily = solar panel wattage x hours of sunlight =  $200 \times 6 = 1200$  watt hours



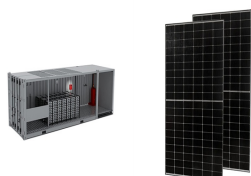
A typical 300-watt solar panel is 65.8 inches long and 36.1 inches wide. It takes up 16.5 sq ft of area. If you have a 1000 sq ft roof, and you can use 75% of that roof area for solar panels, you can theoretically put 45 300-watt solar panels on a 1000 sq ft roof. A typical 400-watt solar panel is 79.1 inches long and 39.1 inches wide.



300-watt Solar Panel How Many Amps and volts? 12v 300 watt solar panel will produce about 16.2 amps and 18.5 volts under ideal conditions (STC). That is why you need a 30A charge controller with 300 watt solar ???



A 400 watt solar panel will produce 250-340 watts of power per hour depending on the weather conditions, & the solar panel's tilt angle How many volts does a 400 watt solar panel produce? 12V 400W solar panel ???



How much energy does a solar panel produce? As mentioned above, the two main factors that determine solar panel energy output are panel power and sunshine. In the UK, a typical solar panel has a power rating of 350W (watts), and a typical day would have four hours of sunlight. The easiest way to estimate output in kWh is to multiply those

# HOW MANY WATTS OF POWER DOES A 18M PHOTOVOLTAIC PANEL HAVE



How many Solar Watts do I Need to Power my Home? Over 179 (GW) of solar capacity is installed nationwide and it's capable of powering roughly 33 million homes. While it takes roughly 17 (400-watt) panels to power ???



Average Solar Panel Output Per Day: UK Guide. In 2015, the international solar power market was valued at a little over \$72.6 billion ??? now, it's on pace to be worth over \$354 billion by the end of 2022. Renewable ???



Solar panel size refers to the total amount of power a solar panel can generate over a period of time Solar panel dimensions refers to the physical size of a solar panel Solar panel sizes and wattage range from 250W ???



Residential solar panels typically produce between 250 and 400 watts per hour???enough to power a microwave oven for 10???15 minutes. As of 2020, the average U.S. household uses around 30 kWh of electricity per day or approximately 10,700 kWh per year.. Most residential solar panels produce electricity with 15% to 20% efficiency.Researchers are ???



Next divide the total system size in Watts by the power rating of the panels you'd prefer. If we use 400W, that would mean you need 13 solar panels. System size (5,200 Watts) / Panel power rating (400 Watts) = 13 ???

# HOW MANY WATTS OF POWER DOES A 18M PHOTOVOLTAIC PANEL HAVE



For example with a 20% buffer, the required solar panel output with Buffer (Watts) =  $6 \text{ kW} \times 1.20 = 7.2 \text{ kW}$ . It's often seen that larger homes might require more solar power. For example, a 1,500-square-foot house can need around 630 kWh each month while a 3,000-square-foot house can use 1,200 kWh.



For instance, the 100-watt solar panel from our example has a  $V_{mp}$  rating of 17.8 Volts, which means that under the STCs, this solar panel will measure 17.8 Volts across its terminals when it's producing 100 Watts of power. The 100 Watts that this solar panel is capable of producing under standard conditions is, in fact, a product of the solar



How to Calculate Solar Panel Watts per Square Meter. Calculating watts per square meter (W/m) is simple: Calculate total watts generated: Multiply the power output of a single panel by the number of panels. Example: 20 panels x 300 ???



1. Solar panel power and efficiency. When it comes to solar panels, "power" refers to the maximum amount of electricity a panel can generate (in watts). The panel's "efficiency" is all about how effectively it can convert daylight into electricity. Higher power and efficiency mean greater electricity production.



How Much Power Does a 1000 Watt Solar Panel Produce? Assuming you are asking about a 1000 watt (1 kW) photovoltaic (PV) solar panel, in full sunlight PV cells can produce around 240 watts per square meter. So a 1kW panel would have an area of just over 4 square meters ??? that's a bit bigger than an average office desk.

# HOW MANY WATTS OF POWER DOES A 18M PHOTOVOLTAIC PANEL HAVE



Do I have enough sun for solar power? Most home panels can each produce between 250 and 400 Watts per hour. If you've got a 1 kW solar panel system on your roof, then it could power your cup of tea with about 10 ???



How Much Power Does A 400-Watt Solar Panel Produce? Solar panels facing the sun. If you think your 400-watt solar panel will produce 400W of power, you'd be right and wrong. Let's take a closer look to understand why.



Solar energy continues to redefine the global energy landscape, offering a sustainable, renewable, and increasingly affordable power source. Among the innovations propelling this shift, the 400w solar panel stands out ???



Most home solar panels that installers offer in 2024 produce between 350 and 450 watts of power, based on thousands of quotes from the EnergySage Marketplace. Each of these panels can produce enough power to run appliances like your TV, microwave, and lights. To power an entire home, most solar panel owners need 17 to 30 solar panels.. The amount of ???



Higher lighting requirements of highways and parking lots start around 25 Watts / 2600 Lumens and go up to 70 Watts / 6500 Lumens. Note: The lower the wattage, the less the LED fixture has to work to produce the light???.i.e. lower wattage can, at times, equal higher lumen per watt output. with the solar or lighting specialist will ensure