

HOW MUCH DOES A SQUARE METER OF CHINT PHOTOVOLTAIC PANEL WEIGH



For example, instead of the typical 2-meter solar panel, they are around 0.5 metres. Although, please note that they will not generate as much power as standard-sized solar panels, but that goes without saying. In terms of power, small solar panels typically start at around 50 watts but can go all the way up to 150 watts. Recommended solar reading:



The Weight of Solar Panels per M2 . Different manufacturers create solar panels of different weights. On average, solar panels weigh between 10 and 20 pounds per square meter. For a sound roof, this weight won't threaten the roof's stability under the panels. The weight doesn't spread evenly across the surface of your solar panel.



Estimated electricity generation (kWh/square foot/year) = (Solar irradiance per square meter) x (Panel efficiency) x (Conversion factor) Conversion factor: To convert square meters to square feet, we use the conversion factor of 1 square meter ??? 10.764 square feet.



It's a common question for those looking into solar power. Solar panels for homes are usually 65 by 39 inches and weigh around 40 pounds. This might change a little depending on the brand. It's key to understand how much does a solar panel weight and to be able to use a solar panel weight calculator. This helps figure out if different



It is the maximum power amount your system can produce under ideal conditions. Capacity is considered 1,000W of sunlight for every panel square meter. Most residential panel systems feature a capacity between 1kW and 4kW. Shade. Your roof should be free from obstacles and shades. Anything that blocks the sunlight makes the solar panel less

HOW MUCH DOES A SQUARE METER OF CHINT PHOTOVOLTAIC PANEL WEIGH



How Much Do Solar Panels Weigh? Several factors impact the weight of solar panels such as their size, material composition, and design. Standard residential solar panels typically weigh between 33 to 50 pounds each. However, note that the weight can fluctuate slightly based on the specific brand, model, and technology used in the panels.



The Weight of Solar Panels per M2 . Different manufacturers create solar panels of different weights. On average, solar panels weigh between 5 and 10kg per square meter. For a sound roof, this weight won't threaten the roof's stability under the panels. The weight doesn't spread evenly across the surface of your solar panel.



WHAT IS THE SOLAR PANEL WEIGHT PER SQUARE FOOT?
Residential solar panels weigh about 2.3 pounds per square foot. Meanwhile, commercial solar panels weigh roughly 2.5 pounds per square foot. Mounting equipment adds an average of 4.5 pounds per square foot to the total weight of a solar panel installation.



Solar panel size per kilowatt and wattage calculations depend on PV panel efficiency, shading, and orientation. It's often seen that larger homes might require more solar power. For example, a 1,500-square-foot house can need around 630 kWh each month while a 3,000-square-foot house can use 1,200 kWh. Moreover, it's crucial to



Weight of different residential solar panels. In terms of weight per area, the average weight/area of a residential solar panel is around 2.25 pounds per square foot (24.3lbs/m² or 11Kg/m²).. Please note that the overall ???

HOW MUCH DOES A SQUARE METER OF CHINT PHOTOVOLTAIC PANEL WEIGH



Solar panels are made up of smaller individual solar photovoltaic (PV) cells. PV cells always come in the same standard size: 156 mm by 156 mm, which is approximately 6 inches long and 6 inches wide. you can raise the weight per square foot to about 3.5 pounds. How much does a 300 watt solar panel weigh? They generally consist of 60 or



How much energy does a solar panel create per square meter? The average solar panel has an input rate of roughly 1000 Watts per square meter, while the majority of solar panels on the market have an input rate of around 15-20 percent. As a result, if your solar panel is 1 square meter in size, it will likely only produce 150-200W in bright



If we divide this weight by the total area of the system (32.7 square meters) it gives a weight of approximately 11 kilograms per square meter (2.3 lbs/sq.ft.). Adding the weight of the mounting hardware, wiring, and other ???



Solar panels weighing about 40 pounds will add about 2.8 pounds (1.27 kilograms) per square foot, while on flat roofs they add about 5 pounds (2.26 kilograms) per square foot. This can add up when you consider the average home will need at least 10 solar panels on its roof.



The average weight of a photovoltaic panel is about 40 pounds per panel. However, different manufacturers have different practices, leading to variations in weight. You can expect a photovoltaic solar panel to weigh anywhere between ???

HOW MUCH DOES A SQUARE METER OF CHINT PHOTOVOLTAIC PANEL WEIGH



Solar panel weight varies by manufacturer, but standard 60 cell solar panels weigh about 40 pounds. Commercial solar panels weigh around 50 pounds. Frames and mounting equipment for both panels



The price of a solar panel is about \$200 per square meter, and the efficiency of a typical solar cell is about 11%, which is about 14W per square meter under the sun on a sunny day. Photovoltaic power generation is based on the principle of the photovoltaic effect, using solar cells to directly convert sunlight energy into electrical energy.



Under typical UK conditions, 1m² of PV panel will produce around 100kWh electricity per year, so it would take around 2.5 years to "pay back" the energy cost of the panel. PV panels have an expected life of least 25 to 30 years, so even under UK conditions a PV panel will generate many times more energy than was needed to manufacture it.



Now you can just read the estimated average solar panel weight from this chart. Here are some examples: On average, a 100-watt solar panel weighs 13.0 lbs.; On average, a 300-watt solar panel weighs 39.1 lbs.; On average, a 400-watt solar panel weighs 52.2 lbs.; On average, the biggest 700-watt solar panel weighs 91.3 lbs.; On average, a 3kW solar system weighs 391.3 lbs.



Secondly, the number of panels you need will be limited by your available roof space. If the solar panel system size you would like requires too many solar panels and thus, too much roof space, try opting for a larger ???

HOW MUCH DOES A SQUARE METER OF CHINT PHOTOVOLTAIC PANEL WEIGH

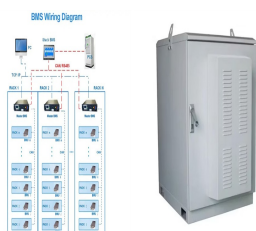
Commercial and Industrial ESS

- Budget-Friendly Solution
- Renewable Energy Integration
- Modular Design for Flexible Expansion



Most solar panels weigh around 40 pounds (18kg) each but can weigh around 30-50 pounds (13-22 kg). Amorphous panels are made with a photovoltaic film which weighs much less than standard panels and makes them more flexible. It is the type you would find in a solar-powered calculator. the total weight that will be loaded onto your roof

BMS Wiring Diagram



The Weight of Solar Panels per M2 . Different manufacturers create solar panels of different weights. On average, solar panels weigh between 5 and 10kg per square meter. For a sound roof, this weight won't threaten the ???



Solar panels generate clean energy and significant savings, but they aren't a one-size-fits-all solution. The size and weight of solar panels vary depending on the make and model, with most residential panels measuring ???



Residential Solar Panels. Dimensions: Approximately 1.7 meters in length and 1 meter in width. Weight: Between 18-21 kg. Usage: Designed to balance energy efficiency and compact size, making them ideal ???



The extra space that comes with 72-cell solar panels is due to the additional photovoltaic (PV) cells inside the panel, which consequently gives it the potential to generate higher power outputs compared to their 60-cell counterparts. Generally, most modern residences can support more than 14 to 20kg of weight per square metre. Despite what

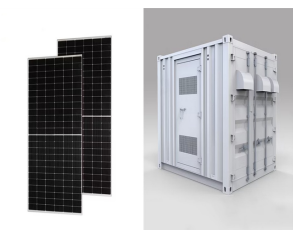
HOW MUCH DOES A SQUARE METER OF CHINT PHOTOVOLTAIC PANEL WEIGH



Solar panels weighing about 40 pounds will add about 2.8 pounds (1.27 kilograms) per square foot, while on flat roofs they add about 5 pounds (2.26 kilograms) per square foot. This can add up when you consider ???



The weight of solar panels varies depending on the type and size of the panels. Typically, a solar panel weighs between 33 and 50 pounds per square meter. When installing solar panels, it's essential to make sure the roof can support this additional weight without compromising its integrity.



In terms of weight per area, the average weight/area of a residential solar panel is around 2.25 pounds per square foot (24.3lbs/m² or 11Kg/m²). Please note that the overall weight of a solar energy system also ???



They are approximately 5.4 feet long and 3.25 feet wide, which works out to about 2.3 pounds of weight per square foot. Each module typically contains 60 solar cells. How much do commercial solar panels weigh? Commercial solar panels are slightly larger than residential solar panels. They are generally around the 50-pound mark and measure in at