

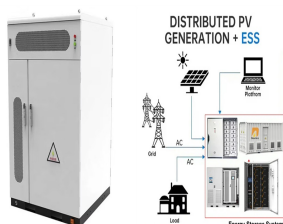
HOW MUCH IS THE PHOTOVOLTAIC PANEL LOAD IN THE FACTORY



Solar panels generate electricity during the day. They generate more electricity when the sun shines directly on the solar panels. Figure 1 shows PV generation in watts for a solar PV system on 11 July 2020, when it was sunny throughout the day and on 13 July when there was a mixture of sun and cloud.



Discover which solar panel sizes and dimensions are the most common in the UK, as well as which size is the best for your home. 0330 818 7480. Become a Partner. Menu. Solar Panels. Heat Pumps. Boilers Most modern rooftops have a rafter load of 140kg per square metre. For reference, solar panels usually weigh approximately 20kg per square metre.



Here is the formula of how we compute solar panel output: Solar Output = Wattage x Peak Sun Hours x 0.75. Based on this solar panel output equation, we will explain how you can calculate how many kWh per day your solar panel ???



r is the yield of the solar panel given by the ratio : electrical power (in kWp) of one solar panel divided by the area of one panel. Example : the solar panel yield of a PV module of 250 Wp with an area of 1.6 m² is 15.6%. Be aware that this nominal ratio is given for standard test conditions (STC) : radiation=1000 W/m², cell temperature=25 celcius degree, Wind speed=1 m/s, AM=1.5.



ASCE 7 Guidelines. The American Society of Civil Engineers (ASCE) provides guidelines for the structural design of solar panel installations through their publication, ASCE 7 1. These guidelines cover the essential ???

HOW MUCH IS THE PHOTOVOLTAIC PANEL LOAD IN THE FACTORY



The main purpose of the solar photovoltaic power plant (SPVPP), with installed power of 500 kW on the roof of the factory GRUNER Serbian Ltd in Vlasotince, is to electrical supply of consumers in



IMARC Group's report, titled "Solar Panel Manufacturing Plant Project Report 2024: Industry Trends, Plant Setup, Machinery, Raw Materials, Investment Opportunities, Cost and Revenue" provides a complete roadmap for setting up a solar panel manufacturing plant. It covers a comprehensive market overview to micro-level information such as unit operations involved, ???



If you're planning to cut your energy bills and help the climate by getting solar panels on your roof, you'll want to know exactly how much electricity they can produce and which is the most efficient solar panel. Learning about solar panel output can also help you pick the right-sized system, reducing solar panel costs in the long run



Basically, certifications per se do not tell much about the quality of a module. If you buy a solar module with IEC 61215/ 61730/ 61701 etc. certifications, it means that the certification-holding manufacturer managed to produce a few modules of that type that passed a standard's (e.g. IEC 61215) tests at the time of applying for certification.



This makes answering the simple question of how much power a solar panel generates a bit complicated, but we'll do our best. In the UK, most domestic solar panels fall between the 250W and 400W categories. Taking the mean then, the standard size for a common 350W solar PV panel is approx. 1,9m long and 1m across. Load More. Are you

HOW MUCH IS THE PHOTOVOLTAIC PANEL LOAD IN THE FACTORY



Example calculation: How many solar panels do I need for a 150m² house ?. The number of photovoltaic panels you need to supply a 1,500-square-foot home with electricity depends on several factors, including average electricity consumption, geographic location, the type of panels chosen, and the orientation and tilt of the panels. However, to get a rough ???



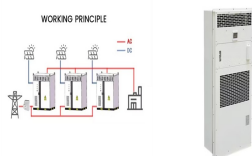
Solar panels and their required mounting equipment typically weigh around 3 to 4 pounds per square foot. This weight is usually acceptable for any roof type in good shape; however, solar panels using weighted ballasts on ???



West Coast Corrugated Ltd is one of the biggest commercial solar panel installations we've completed, installing 1,166 Canadian Solar panels. The system provides 290,000kWh of electricity each year, saving 130 tonnes of ???



the solar array and directed to the posts that support the solar panel. Also, depending on the roof geometry, the solar panel may act as a sail and catch wind from under the panel thus creating very high uplift loads. In many commercial applications, solar panels are put on flat roofs. In order to achieve higher



$$N \text{ modules} = \frac{\text{Total size of the PV array (W)}}{\text{Rating of selected panels in peak-watts}}$$
 Suppose, in our case the load is 3000 Wh/per day. To know the needed total W Peak of a solar panel capacity, we use PFG factor i.e.

$$\text{Total W Peak of PV panel capacity} = 3000 / 3.2 \text{ (PFG)} = 931 \text{ W Peak.}$$
 Now, the required number of PV panels are = $931 / 160\text{W} = 5.8$.

HOW MUCH IS THE PHOTOVOLTAIC PANEL LOAD IN THE FACTORY



Power electronics for PV modules, including power optimizers and inverters, are assembled on electronic circuit boards. This hardware converts direct current (DC) electricity, which is what a solar panel generates, to alternating current (AC) electricity, which the electrical grid uses. Learn more about how inverters work.



How to Calculate the Solar Panel Roof Load? To calculate the solar panel roof load, you'll want to dive into two main areas: point load and distributed load. The point load represents the pressure applied to specific points where the solar panels and their mounting hardware attach to the roof.



46. Solar Panel Life Span Calculation. The lifespan of a solar panel can be calculated based on the degradation rate: $L_s = 1 / D$. Where: L_s = Lifespan of the solar panel (years) D = Degradation rate per year; If your solar panel has a degradation rate of 0.005 per year: $L_s = 1 / 0.005 = 200$ years

47. System Loss Calculation



This article summarises guidance developed by Hampshire County Council for the assessment of roofs in order to install photovoltaic panels. A guide to assessing existing roofs for the addition of solar panels. Author: ???



To answer this, we need to look at how much energy solar panels can generate. Most home panels can each produce between 250 and 400 Watts per hour. According to the Renewable Energy Hub, domestic solar panel systems usually range in size from around to 1 kW to 5 kW. Allowing for some cloudier days, and some lost power, a 5 kW system can

HOW MUCH IS THE PHOTOVOLTAIC PANEL LOAD IN THE FACTORY



"Looking at the solar panel as a 25-year product, we found it unacceptable. So in 2008, we examined the business plan to find out what it would take to set up in the United States." Rashid and his partners thought there'd be future demand for Made-in ???



To calculate the KWp (kilowatt-peak) of a solar panel system, you need to determine the total solar panel area and the solar panel yield, expressed as a percentage. Here are the steps involved in this calculation: 1. ???



Explore the financial implications of factory solar panel adoption in our latest article. We break down upfront costs, operational expenses and the potential for long-term savings. Dive into how factors like installation size, panel type and location affect prices, and learn about government ???



Solar power is a sustainable energy solution, and the goal is to make the most out of it and reduce dependence on the electrical grid. While switching to solar energy seems easy, calculating the number of solar power panels required can be challenging.. During solar panel calculation, there are a variety of factors that you need to keep in mind. These include ???



In terms of solar panel output, it is best to separate solar panels into two categories: 60- cell solar panels and 72-cell solar panels. 60-cell solar panels are typically 5.4 feet tall by about 3.25 feet wide and have a power

HOW MUCH IS THE PHOTOVOLTAIC PANEL LOAD IN THE FACTORY



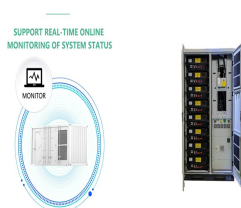
Annual Solar Panel Energy Output (in kWh) = kK x system kWp. A rough kK value you can use for most of the UK is: 950 kWh/kWp per year. So say we have a 4 kWp solar panel system we estimate that the annual output will be: Energy ???



Summary. You need around 200-400 watts of solar panels to charge many common 12V lithium battery sizes from 100% depth of discharge in 5 peak sun hours with an MPPT charge controller.; You need around 150-300 watts of solar panels to charge many common 12V lead acid battery sizes from 50% depth of discharge in 5 peak sun hours with an ???



1 43RD IEEE PHOTOVOLTAIC SPECIALISTS CONFERENCE - 10Jun2016 Mechanical Load Testing of Solar Panels ??? Beyond Certification Testing Andrew M. Gabor¹, Rob Janoch¹, Andrew Anselmo¹, Jason L. Lincoln², Hubert Seigneur², Christian Honeker³ 1 BrightSpotAutomation LLC, Westford, MA, USA 2 Florida Solar Energy Center at the University of Central Florida,



Load Calculation: Based on the homeowner's energy needs, a 6 kW solar panel system was proposed, which would consist of 20 panels. Each panel weighed approximately 40 pounds, leading to a total panel weight of 800 pounds.