

HOW MUCH VOLTAGE DOES A PHOTOVOLTAIC PANEL GENERATE IN WINTER



How much electricity does a solar panel produce in winter? According to our calculations, solar panel output decreases by around 83% in the winter compared to the summer. To give an idea of what that means, a standard 3.5 kilowatt (kW) solar panel system will produce around 362-kilowatt hours (kWh) of electricity per month during the summer. In winter, that drops to 52 kWh.



Do solar panels work in the winter? Yes, solar panels work in the winter. In fact, solar panels can generate electricity in almost any type of weather. Cold weather doesn't affect solar panel performance (unless temperatures go below -40°C), since they operate on sunlight, which is still available in winter in the UK albeit, at much lower levels than in the summer.



Why do solar panels generate less electricity in winter? This is one reason why solar panels generate less electricity in winter: the days are just shorter. There also tend to be more cloudy days in winter, which can reduce the solar panels' output.



Can solar panels generate electricity during the frosty season? We know that the solar industry is full of misinformation, but we only use reliable sources, including: As solar panels need daylight rather than heat, they can still generate electricity during the frosty season although they might not be as effective because of a combination of factors associated with winter (explained below).



How much electricity does a solar panel produce a month? To give an idea of what that means, a standard 3.5 kilowatt (kW) solar panel system will produce around 362-kilowatt hours (kWh) of electricity per month during the summer. In winter, that drops to 52 kWh. Do solar panels still work in snowy weather?

HOW MUCH VOLTAGE DOES A PHOTOVOLTAIC PANEL GENERATE IN WINTER



Does cold weather affect solar panels? Cold weather doesn't affect solar panel performance (unless temperatures go below -40°C), since they operate on sunlight, which is still available in winter in the UK, albeit, at much lower levels than in the summer. This is one reason why solar panels generate less electricity in winter: the days are just shorter.



Thankfully, solar panels continue to work well on less sunshine, even if they don't produce quite as much electricity as they do on clear summer days. In this guide, we'll explain how solar panels cope when the weather's bad.



Fortunately, we've got you covered with our solar panel output calculator. This tool will instantly provide you with the amount of electricity that your chosen panels will produce in your region, and the roof space that they'll take up. Just choose your region, the number of solar panels you're looking to get, and the panels' peak power.

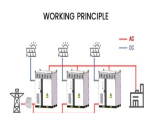


How Much Electricity Do Solar Panels Generate in Winter? In the winter, most solar panels generate 32% less energy than they do in the summer. This, however, is related to your location and light levels, not the panels. A 5-kWh?

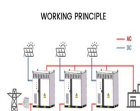


To calculate how much power a solar system will generate, multiply the solar panel wattage by the number of daylight hours, and then multiply that by the number of solar panels you have. For example, with 350W?

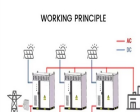
HOW MUCH VOLTAGE DOES A PHOTOVOLTAIC PANEL GENERATE IN WINTER



How Much Electricity Does a 1 kW Solar Panel System Produce? A 1 kW solar panel system is considered on the smaller size, with these systems typically being used for DIY projects, RVs, boats, vehicles, or off grid solar panels for small structures. The most commonly stated amount of electricity that these systems can produce is 850 kW per annum



There's a huge seasonal variation in how much of your power solar panels can provide. Read our buying advice for solar panels to see how much of your power solar panels could generate in summer. How much ???



In winter, panels may produce less and in summer they may produce more. There are many factors that affect solar panel output, but one of the most significant is the season. In winter, panels may produce less and in summer they may produce more. How Much Does Rooftop Solar Power Production Vary Between Summer and Winter?

Energy storage (kWh)
102.4kWh
Nominal voltage (V)
512V
Outdoor All-in-one ESS cabinet



How much energy do solar panels produce per day? A 4.3kWp solar panel system will produce 10kWh per day in the UK, on average. However, you shouldn't take this as a hard-and-fast rule, because your system's daily ???



When installing solar panels during the winter months, it is important to view it as an investment to reduce the overall energy consumption throughout the year. Even with the potential of a solar panel running at a reduced efficiency due to inclement weather and lack of sunlight, there is still a high demand for solar panel installation during

HOW MUCH VOLTAGE DOES A PHOTOVOLTAIC PANEL GENERATE IN WINTER



Solar panel output: winter vs summer in the UK. There are several factors that can affect how much electricity a solar panel can generate. These include: Direction and angle of your roof. The best position for a solar ???



How much power or energy does solar panel produce will depend on the number of peak sun hours your location receives, and the size of a solar panel. just to give you an idea, one 250-watt solar panel will produce about 1kWh of energy/electricity in one day with an irradiance of 5 peak sun hours. Here's a chart with different sizes of solar panel systems and ???



A 4kW solar panel system has a peak power rating of four kilowatts, meaning it would produce 4,000 kilowatt-hours (kWh) of electricity per year in standard test conditions. You can build a 4kW system by purchasing solar panels ???



How Does Heat Impact Solar Panel Efficiency. Somewhat counterintuitively, solar panels decrease in efficiency in extreme heat. (Source: Energy Education) That doesn't necessarily mean a homeowner in Ithaca will generate half as much electricity in winter as in summer. But production from the solar panel array is certain to take a serious hit.



In the simplest terms, solar panels convert energy from sunlight into electrical power using photovoltaic (PV) cells. But how much electricity can a solar panel produce? According to our calculator, a 4.5 kilowatt (kW) system with 12 panels would produce on average 4,100 kilowatt hours (kWh) in a year, enough for a 3 bedroom house.

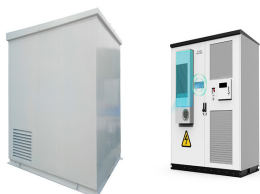
HOW MUCH VOLTAGE DOES A PHOTOVOLTAIC PANEL GENERATE IN WINTER



Solar panels absorb energy from the Sun's abundant source of light, not its heat. So, as long as sunlight is hitting a solar panel, it will generate electricity. While solar panels are more productive in direct sunlight, a process ???



How much electricity do solar panels generate in winter? As mentioned before, solar panels generate substantially less electricity at the height of the winter than at the peak of the summer. Let's have a look at the solar panels output in winter vs summer in different parts of the UK, based on data found in PVGIS:



This chart is based on a typical four-bedroom family home in Essex using 4,000kWh of electricity per year, with a 6kWp solar panel system and a 5.2kWh battery. The system produces nearly 25kWh of electricity per day in May and July, but only 4.9kWh per day in December. Seeing as solar panels produce less electricity in winter, they won't



Solar panels can still generate electricity in the winter. However, data shows that energy generation can drop to an eighth of what it would be on a summer day, so choosing solar panels designed to optimise ???



How much electricity do solar panels generate in the winter? Typically, solar panel output experiences a decline in winter compared to summer, primarily due to shorter days and a higher likelihood of cloud cover obstructing sunlight. On average, a 5kW system is expected to generate 13kWh per day during winter, contrasting with the 20kWh per day

HOW MUCH VOLTAGE DOES A PHOTOVOLTAIC PANEL GENERATE IN WINTER



How Much can a Solar PV System Produce? Solar panels are particularly popular in the south of the country. Domestic solar PV systems range in size from 1kW to 5kW, although a typical domestic solar PV system is around 3.5kW with 12 panels. Every 1kW system can produce around 850kW units per year.



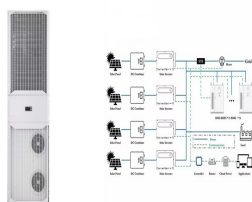
Read on to find out how much electricity a solar panel can produce. What is solar panel output? The power rating of your system (stated in kilowatts, or kW) Your friend's system shouldn't be producing that much ???



The output from a solar panel depends on its capacity, but on average, a typical residential solar panel with a power output of 300 watts can generate around 1.2 ??? 1.5 kWh per day, given sufficient sunlight.



How Much Electricity Does a Solar Panel Produce, UK? This estimate accounts for the lower average number of peak sun hours in the UK, which ranges from about 2.5 hours in winter to 4 hours in summer. Annual 4kW solar PV system output in the UK: For a rough estimate, if you assume an average of 4 sunlight hours per day, the annual energy



How Much Electricity Do Solar Panel Generate in Winter? In the winter, most solar panels generate 32% less energy than they do in the summer. This, however, is related to your location and light levels, not the panels.

HOW MUCH VOLTAGE DOES A PHOTOVOLTAIC PANEL GENERATE IN WINTER



Yes, solar panels work in the winter. In fact, solar panels can generate electricity in almost any type of weather. Cold weather doesn't affect solar panel performance (unless temperatures go below -40°C), since they ???



In fact, cold climates are actually optimal for solar panel efficiency. 1 So long as sunlight is hitting a solar panel, it will generate electricity. Any diminished output during the winter months will primarily be due to heavy snow and shorter daylight hours. So, how do solar panels work? When sunlight photon particles hit solar panel



Discover how cold weather and snow impact solar panel performance and learn tips to maximize efficiency during winter month Products Discover by Scenarios SOLIX Infinity Cyber Week Solar panels typically generate less power in winter due to shorter daylight hours and a lower sun angle. On average, they may produce 25-60% less energy



We take a look at how solar panels generate electricity in winter and explore strategies you can use to maximise their efficiency. Join the waitlist for the new Tesla Powerwall 3! Don't miss the chance to enhance your energy independence.



Now you can just read the solar panel daily kWh production off this chart. Here are some examples of individual solar panels: A 300-watt solar panel will produce anywhere from 0.90 to 1.35 kWh per day (at 4-6 peak sun hours locations).; A 400-watt solar panel will produce anywhere from 1.20 to 1.80 kWh per day (at 4-6 peak sun hours locations).; The biggest 700 ???

HOW MUCH VOLTAGE DOES A PHOTOVOLTAIC PANEL GENERATE IN WINTER



Solar PV systems produce less energy on average per day due mainly to fewer hours of daylight (aside from more frequent inclement/overcast weather); the further towards the poles you live the more exaggerated this effect becomes (sorry, Tasmania), while the closer to the equator you are the less pronounced it is (e.g. Darwin).



After learning what time of day do solar panels work best, let's find out in detail about solar panel output winter vs summer. No, this is not the case. Solar panels will produce electricity even in winter but there will be an ???