

# HOW MUCH WEIGHT DOES THE SOLAR BRACKET HAVE



What are solar panel brackets? Solar Panel Brackets: The Ultimate Guide, types and best options. Solar panel brackets are an essential component of any solar panel system. They are used to secure solar panels onto rooftops, ground mounts, or other structures. The brackets are designed to withstand harsh weather conditions and provide a secure foundation for the panels.



How do solar panel brackets work? Solar panel brackets mount solar panels on roofs or other structures. The brackets are designed to securely hold the panels in place while allowing for proper air circulation, which keeps the panels cool and operating efficiently.



How much do solar panels weigh? Most of the solar panels available on the market, consisting of 60 cells per panel, weigh about 40 pounds (18 kilograms). However, some solar panels can weigh up to 50 pounds (22.6 kilograms), but these are usually produced for the commercial sector rather than for households.



How much weight do solar panels add to your roof? By construction standards, the weight solar panels add to your roof usually isn't a cause for concern. The average residential PV panel measures about 1.65m by 1m. Including mounting equipment will add about 20kg to your roof. For a full 6kW array, you will need about 20 panels, adding about 365kg of dispersed weight.



How much does a solar system weigh? Very few residential solar systems are larger than 10 kW (about 31 panels), so let's consider how heavy a system of this size would be. Multiply 31 panels by 45 pounds and you get 1,395 pounds. Can Your Roof Support a Solar Panel System?

# HOW MUCH WEIGHT DOES THE SOLAR BRACKET HAVE



Do solar panel brackets need to be installed correctly? Proper bracket installation is key to ensuring the longevity and performance of a solar panel system. Solar panel brackets are an important part of the installation process and should be installed by a professional. The brackets must be installed correctly to ensure the safety and longevity of the solar panel system.



Installing a solar energy system can be a challenging task. A home solar panel installation will include up to or more than a thousand parts so gathering the right component parts can take a lot of time researching what each part is and what each part does. One critical component of your solar energy system is the solar racking, otherwise known as solar panel mounts.



To determine the size of your solar system, you can use a solar power calculation formula based on the typical output of solar panels, usually ranging from 250 watts to 400 watts. For instance, with the average American's monthly energy consumption of 867 kWh, a 6.5 kW solar array is required to fully offset usage.



What Is Solar Bracket? Jan 02, 2024. What is solar bracket? However, roof-mounted brackets may require additional reinforcement to ensure they can support the weight of the solar panels, and they may limit the amount ???

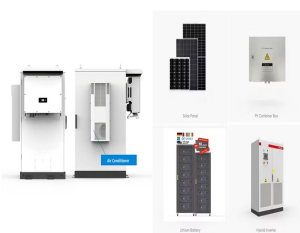


Most standard solar panels have just about the same weight. This is because solar manufacturers have to follow industry standards for panel sizes, and because standard solar panels are more or less the same size, ???

# HOW MUCH WEIGHT DOES THE SOLAR BRACKET HAVE



If you have a system that's weighted down, the roof needs to be strong enough to deal with the added weight. If the roof isn't strong enough, use appropriate fixings to ensure rain can't cause any damage from leaks. You ???



Low Weight. Aluminium brackets are much lighter than traditional materials. Installation is more accessible and less labour-intensive. The reduced weight decreases the load on the roof, enhancing safety and longevity. Safety Tips for Mounting Brackets in Solar Panel Systems. Follow Manufacturer Instructions: Adhere to installation



When installing solar panels, the number of brackets required is crucial to ensure the system's stability and durability. Brackets play a key role in securing panels to their mount. Ground-mount brackets tend to be heavier and more robust than roof brackets, as they need to support the weight of the panels and withstand environmental forces.



Now that you know the weight capacities for our wall-stud application brackets, we can discuss the weight capacities of brackets that are intended for drywall application. The brackets for this hidden shelf are installed directly onto the drywall and become invisible once the shelving is added. Here are a few weight specifications: Bracket



How much does solar battery storage cost? The Puredrive PureStorage battery comes in at around ?2,500, and will store 5 kWh, so it's very much in the average price and storage bracket. Personally, and this goes for the Alpha Smile and Tesla Powerwalls, we'd prefer to have an array of separate batteries, that are smaller and cheaper, to

# HOW MUCH WEIGHT DOES THE SOLAR BRACKET HAVE



Case Study: solar panel installation for an average UK home ??? House type: Semi-detached ??? Solar panels: polycrystalline 4kW ??? Number of panels: 10-14 ??? Solar panel cost, including installation: ?7000.00 (Actual price ???)

## Commercial and Industrial ESS

Air Cooling / Liquid Cooling

- Budget-Friendly Solution
- Renewable Energy Integration
- Modular Design for Flexible Expansion



How Much Does a 400-Watt Solar Panel Weigh? The weight of a solar panel varies by manufacturer, material, and construction. An EcoFlow 400W rigid solar panel weighs 21.8kg, whereas a 400W portable solar panel from the same manufacturer weighs 16kg.



In retrospect, a two-piece solar panel mounting bracket would be much easier to deal with. One piece mounts to the panel, the other piece mounts to the roof and the two pieces are bolted or screwed together. Adding too much weight on the roof can't be a good thing. T. Tgmontague New Member. Joined Jun 25, 2020 Messages 16. Nov 28, 2020 #11

## SUPPORT REAL-TIME ONLINE MONITORING OF SYSTEM STATUS



The ideal pitch for a Solar Panel is around 30 degrees off the horizontal. Simply because this allows the panels to gain more exposure from the sun throughout the entire day. When installing Solar panels on a flat roof, this is easily achieved. As the Solar Panels are installed onto a bracket which tilts the panel to around 30 degrees.



Solar panels are a key component of any solar energy system, and their weight plays a significant role in several factors that need to be considered when installing them. The weight of a solar panel is influenced by various factors, including the size of the panel, material and build quality, frame type, and mounting equipment used.

# HOW MUCH WEIGHT DOES THE SOLAR BRACKET HAVE



In addition to panel dimensions, you might be asking, "How much do solar panels weigh?" Weight is an important consideration when lifting, transporting, and installing your panels. The average residential solar panel ???



What do standard solar panels weigh? Understanding the size and weight of solar panels is important if you are considering installing them on your rooftop. Most solar panels weigh around 40 pounds (18kg) each but can ???



Weight of Typical Solar System. The combined weight of a typical solar system, including not only the panels but also various other parts. Here is a summary of a residential solar system's typical weight: Solar Panels: The weight of solar panels for a residential system can vary from 40 to 60 pounds (18 to 27 kilograms) per panel, as was



In addition to solar panel size, you should also consider the weight. The standard solar panel weight in the UK is 18 - 21kg for residential settings and 22 - 30kg for commercial settings. These include the weights of ???



How much does a solar PV array cost? Prices collected through the MCS scheme (see below) showed that in 2021 prices dipped to about ?1,500 per kilowatt for small installations. However, prices have since risen to about ?2000 per kilowatt ??? presumably a combination of inflation and increased demand for PV.

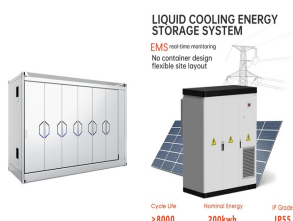
# HOW MUCH WEIGHT DOES THE SOLAR BRACKET HAVE



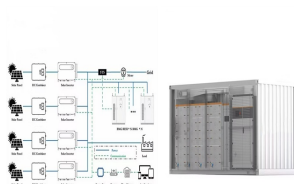
How Much Weight Can Solar Roof Brackets Handle? The weight capacity of solar roof brackets can vary depending on the specific design, material, and manufacturer. Typically, solar roof brackets are engineered to ???



What do standard solar panels weigh? Understanding the size and weight of solar panels is important if you are considering installing them on your rooftop. Most solar panels weigh around 40 pounds (18kg) each but can weigh around 30-50 pounds (13-22 kg).



In addition, most solar panels have a lifespan of around 25 years, and thus your roof must have the capacity to withstand that weight for those years. 3. The roofing material. The material of your roof also plays a role ???

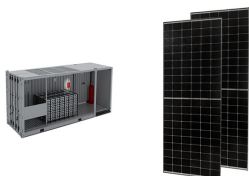


How much do solar panels weigh? Now, it's time to address the central question on your mind: how much do solar panels weigh? Well, a residential solar module typically weighs slightly more than 40 pounds but may weigh anywhere ???



Nonetheless, 100-watt solar panels have become very popular due to their small, portable size. They are often brought on camping and RV trips. Here are some quick facts about the average weight of solar panels with differing wattages: 100-watt solar panels from 5 of the most popular brands average 18.8 pounds.

# HOW MUCH WEIGHT DOES THE SOLAR BRACKET HAVE



Solar Panel Tilting Brackets. The brackets are the lift frame and securely fasten the solar panel to the surface to which it is attached. Everything is attached to the brackets, the solar panel, actuator, rotation pin, and whatever ???



Here are some key features to consider when choosing solar battery brackets: Weight Capacity. How much do Solar Battery Brackets cost in South Africa? The cost of solar battery brackets in South Africa varies depending on the size and material, but generally, prices range from R200 to R2000, excluding VAT.



Learn about the weight of solar panels, roof support, impact of snow, and panel installation. Skip to content. 877-851-9269. How Much Do Roof-Mounted Solar Panels Weigh? a specifically designed bracket with the same galvanized roofing screws used by roofers in the installation of the roof is used to mount the panels.