

HOW TO APPLY FOR A PHOTOVOLTAIC PANEL CANOPY



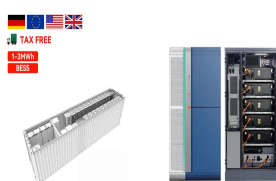
2. Attach the Fixing Bracket to the Solar Panel. Once you've gathered all the tools and followed up on permits and safety requirements, it's time to set up your mounting system. The first step is to attach the fixing bracket to the solar panel. Lay the solar panel face-down on the tarp or canvas to protect the photovoltaic surface.



The solar system - including the panels, solar inverters, mounting equipment, and necessary wiring - will have an installation cost of \$3,500 to \$9,000. This assumes a solar panel kit between 3.5 kW and 6 kW in size - enough to power a small to medium sized home - and a cost per watt of \$1.50 for the solar panel kit.



With solar panels that can bend, glass panels that allow some daylight through, or even double-sided panels that absorb light from both sides, today's technology allows for the architectural use of a solar panel to enhance the aesthetics and performance of any structure.



Solar Panel Carports ESE Solar are passionate about the environment and the latest renewable, green, technologies. A solar canopy can help you generate electricity for your property, Jack had 3 months leave in which he immersed himself in a solar crash course and got applying for jobs within the solar sector. He came across ESE Solar, a



Of course, there's the generated electricity. You can use the power your pergola solar panels generate to power your pool, a single room, or your whole house. On average, just one solar panel produces somewhere a?|

HOW TO APPLY FOR A PHOTOVOLTAIC PANEL CANOPY



Most importantly, an accredited installer must install the solar panel system. The system must also be under a specific capacity, typically up to 5MW, and meet various safety and energy efficiency standards 2. How to Apply for SEG. The application process for the Smart Export Guarantee is relatively straightforward.



The solar panel canopy is a structure designed to shade ground areas, parking lots, pedestrian paths and much more. Here are types and advantages. Solar panel canopies are innovative solutions to optimize spaces generating clean electrical energy. These sophisticated coverings are specifically designed to transform solar light into electricity.



Solar panel building regulations. Solar panel installations have to pass standard building regulations for the property - it's a legal requirement for many home improvements.. The key areas are structural safety of a building (Part A) and electrical safety of a building (Part P). Your roof must be able to support the additional weight of rooftop panels and the electricals of the a?|



One such innovation is the integration of photovoltaic (PV) shade structures, which serve the dual purpose of providing shelter for vehicles while harnessing solar energy to generate electricity. A car park shade a?|



As of February 2024, 28% of the grants handed out have been for solar panels, so applying for the grant is worth a shot if you're eligible. We highlight this below. Solar panel finance and loans. In the event that you aren't eligible for any of the grants, schemes or initiatives, we've covered, some suppliers offer finance and loan

HOW TO APPLY FOR A PHOTOVOLTAIC PANEL CANOPY



While it sounds simple enough to put panels on an existing roof, there are some factors that must be addressed. The main issue is weight. While a solar panel is not particularly heavy (25-40lbs), several panels begin to represent a considerable weight. Most domestic canopy structures are designed to hold themselves up and not much more.



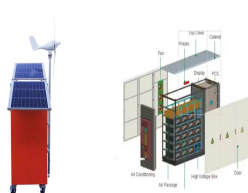
Press the panel down firmly, ensuring a solid bond between the panel and the surface. Wiring Your Solar Panels Series or Parallel Connection. The good news is that flexible solar panels use the same wiring methods as a?



There are many factors that can affect the amount of energy you produce including: The roof pitch of the canopy a?? the orientation angle of the canopy a?? mono-pitch solar canopies are perfect for south facing installations and the dual-pitch solar canopies are perfect for east/west installations a?? The size of the system a?? Any tree, buildings etc. that may cause shading over the panels



When choosing a photovoltaic panel, it is essential to consider the efficiency, cost, and available space for installation. Monocrystalline panels are the most efficient but also the most expensive. Thin-film panels are the least efficient but the most affordable. Polycrystalline panels fall in the middle range of efficiency and cost.



PARA SOL is proud to launch SOL flex, our new Patent Pending solar canopy system, the first commercially available solar product optimized for bifacial modules! The SOL flex system integrates ten years of canopy design innovation into one great flexible product featuring :. Single and Double tilt options. Universal design accommodating all PV modules. Minimal underside a?

HOW TO APPLY FOR A PHOTOVOLTAIC PANEL CANOPY



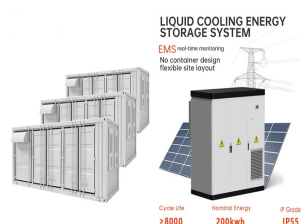
NEW (for a brand new solar photovoltaic system) ALTERATION(if you are adding to an existing solar PV system) Select PHOTOVOLTAIC from the dropdown for the type of structure. For the description of work to be done, please include : "Solar PV system" Number of panels proposed Location (roof, ground mount etc.)



Chair ASCE Solar PV Structures Committee steven.gartner@hdrinc
National Council of Structural Engineers Associations | 1. Become familiar with the fundamentals of a solar PV plant. 2. Identify the different types of solar PV structures. 3. Know the unique aspects of solar PV structures and why a Manual of Practice is needed. 4.



8 Benefits of Installing Our Solar Canopy Range. We're excited to launch our range of solar panel canopies, implementing the best PV panel modules available on the market. This canopy range is designed to provide schools with optimal results, enhanced aesthetics, and increased durability. 24/7 Energy Generation



A solar panel awning is a great addition to your home, it can be a beautiful structure added to the side of your home that now shades the house from the sun, keeps the house itself cooler and provides an outdoor space that can be used for entertaining and family gathering and to make it even better the solar panel awning can produce plenty of solar power to help offset your a?|



Place your solar panels on the canopy's secured rails, leaving around 2 to 3 inches worth of space from the end of the rail to the solar panel frame. Begin with one row of panels and complete each row before beginning a?|

HOW TO APPLY FOR A PHOTOVOLTAIC PANEL CANOPY



DIY Solar Panel Tilting / Adjustable Canopy a Frame Easy Build Instructions / Complete Guide: This Video is a Walk-through Complete Guide / instructions on how to build Your own adjustable angle / tilting solar panel canopy A frame to provide shade and shelter from the elements. My design will suit most flat roofs and could easily be adaptea?|



The roof canopy offers a unitised watertight aluminium frame with solar PV laminated glazing panels. The carport structure incorporates both the solar panels and cabling within its frame, as well as the control panel for both the solar electrical grid connection and electric vehicle charging point (EVCP). Providing points.



A prior approval application is only required where the solar equipment would be installed on the flat roof of a building in the following areas: a conservation area; an area of outstanding natural beauty; an area specified by a?|



Planning permission for solar PV systems supplying residential properties. The key piece of legislation effecting planning permission for the installation of solar panels for residential properties is The Town and Country Planning (General Permitted Development) (amendment) (England) Order 2008. This ammendement clasifies the installation of a residential solar PV or a?|



Looking to Install A Solar Canopy? A solar canopy represents a sound investment for schools, allowing schools to maximise covered outdoor space while also reducing their energy bills and cutting carbon emissions. It a?|

HOW TO APPLY FOR A PHOTOVOLTAIC PANEL CANOPY



Solar panel bracket adhesive; Step 1. Apply Adhesive on the Corner Brackets. Apply adhesive on one of the corner brackets. Put the adhesive on the top area where the solar panel will be installed., Align the corner bracket to one of the solar panel corners. Press firmly. Repeat this step for the other three corner brackets.



In this document a solar carport means a shelter for one or more cars that incorporates solar photovoltaic (PV) modules. A solar car park means a parking facility consisting of multiple solar carports. This document will be of particular interest to investors and developers of solar car parks and multifunctional solar carport systems. It



Some common solar panel system sizes include a 3kW solar panel system, a 4 kilowatt solar panel system and a 5kW solar panels. For instance, a typical 2kW solar panel system suited for 1-3 people will need a?



Each solar panel will come with a power output or power rating expressed in Watts. The majority of monocrystalline solar panels have a power rating between 300W to 550W. If you install solar panels in Spain and apply for EU funding before 31st December 2023 you can receive a?!3,000 in grants.



2. Getting MCS accreditation. An MCS (Microgeneration Certification Scheme) accreditation helps demonstrate that you offer reliable, high quality solar panel installation 's a great option for anyone wondering how to start a solar panel business. MCS accreditation serves as a mark of credibility for your new solar panel business.