

# HOW TO BEST PLACE PHOTOVOLTAIC PANELS



Here's how a solar panel installation works from start to finish, and what you should do before and after the installation. Installing solar panels in alternative places. Domestic solar panel systems are usually installed on ???



Solar panel efficiency can vary significantly depending on the conditions in which it is used. For example, the efficiency may decrease if the cell temperature rises above 25°C or the irradiance level is lower than 1000 W/m². Therefore, it is important to consider the actual operating conditions when selecting a solar panel for a particular



How to calculate the optimal azimuth angle for solar panels? The sun's position in the sky changes hourly as well as monthly. With that, solar energy received per unit area per unit time???i.e., solar irradiance???also changes. For a particular location, the peak solar irradiance is when the sun is overhead.



46. Solar Panel Life Span Calculation. The lifespan of a solar panel can be calculated based on the degradation rate:  $L_s = 1 / D$ . Where:  $L_s$  = Lifespan of the solar panel (years)  $D$  = Degradation rate per year; If your solar panel has a degradation rate of 0.005 per year:  $L_s = 1 / 0.005 = 200$  years 47. System Loss Calculation



All solar panel strings connected in parallel have to feature the same voltage, and they also have to comply with the NEC 690.7, NEC 690.8(A)(1), and NEC 690.8(A)(2). Modules need to be the same model in all cases in order to ???

# HOW TO BEST PLACE PHOTOVOLTAIC PANELS



What is Solar Panel Mounting and Racking? Mounting solar panels refers to the process of installing solar energy systems onto a structure such as a building or ground mount. The procedure usually involves securing the panels with a racking system on the rooftop or ground and connecting the system to the power grid. Factors like direction, angle



They offer a range of solar panel and battery packages, from £4,995 for a typical 6-panel system. Customers whose electricity is supplied by E.ON Next and have had both solar panels and a battery installed by E.ON Solar and Storage team after 1 January 2024 are eligible for the Next Export Premium Plus tariff, which pays 40p/kWh for a fixed 12-month term.



Solar panels should ideally face south in the UK, though arrays that face east or west can also be extremely productive. North-facing solar panels aren't usually worth installing. On the other hand, panels that point towards the ???



Solar panel placement is an important factor that affects the performance and output of your solar PV system. By choosing the optimal direction and angle for your solar panels, you can maximize their exposure to ???

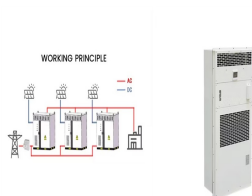


Step 2: Work on the solar panel connections. Secure at least two parallel solar panel support rails onto the shed roof. Ensure they're anchored and weatherproofed to withstand outdoor conditions. Create a small opening in the ???

# HOW TO BEST PLACE PHOTOVOLTAIC PANELS



The biggest reason for the price drop lies in the photovoltaic (PV) panels themselves: 90% reduction in price (seen in 2019) from \$2/watt to a measly \$0.20/watt! On average, in the United States between 2010 and 2020, the cost of installing a residential solar system fell from \$7.50/watt to \$2.50/watt .



The impact of direction on solar panel output. Your solar panel system's direction is one of the biggest factors in determining its output. This chart below uses an average of 26 arrays in Yorkshire that all have peak power ???



So, the jump in solar panel efficiency between 2022 and 2023 was a mere 0.2%. It looks like that number wasn't cutting it though. This year, according to the mainstream media, a South-Korean company will launch a game-changing solar panel. This all requires cabling. ???

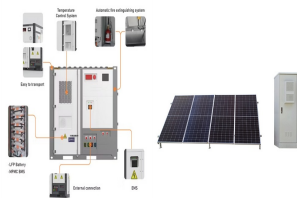


A 1 m2 solar panel with an efficiency of 18% produces 180 Watts. 190 m2 of solar panels would ideally produce  $190 \times 180 = 34,200$  Watts = 34.2 KW. But inclined solar panels also need some spacing between them so practically you would be generating about half the power or 17.1 KW.



Big solar panel system: 1kW, 4kW, 5kW, 10kW system. These include several solar panels connected together in a system (2 ??? 50 solar panels). Now, we need to understand what these "maximum power ratings" actually mean. These are the solar panel outputs at ideal conditions. These ideal solar conditions are known as STC or Standard Test

# HOW TO BEST PLACE PHOTOVOLTAIC PANELS



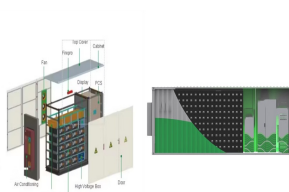
The best-known part of a solar power system is the Solar Panels. Solar energy is probably the most popular renewable energy in the world today.. The solar power industry is ever-growing, and as always, new technology is being produced all the time. This guide will help you understand how solar panels work, how they function as part of a solar power system and ???



PV panels vary in size and in the amount of electricity they can produce. Electricity-generating capacity for PV panels increases with the number of cells in the panel or in the surface area of the panel. PV panels can be connected in groups to form a PV array. A PV array can be composed of as few as two PV panels to hundreds of PV panels. The



If even one panel is shaded it will reduce the output of all your panels unless you invest in micro-inverters or other optimizing devices. Solar Panel Orientation and Elevation: So we've established that there's a sweet spot for your solar panel ???



An example of a thin-film solar panel is shown in Figure 3. Figure 3: Flexible thin-film panel. An evolution of the tandem technology has been patented by Unisolar, and is known as Triple Junction. Instead of pairs, it employs ???



Sun Direction Maps: Essential tools that show the Sun's path across the sky, helping optimize solar panel placement for maximum efficiency. Reading the Map: Key elements include azimuth angle (compass direction) and elevation angle (Sun's height). These help determine the best placement and tilt for solar panels. Seasonal Variations: Sun paths vary ???

# HOW TO BEST PLACE PHOTOVOLTAIC PANELS



Any implementation of a sustainable photovoltaic solar energy system implies the optimization of the resources to be used. Therefore, it is the basis for the design and assembly of solar ???



See also: Solar Panel Wire Size (Cable Gauge + Calculations Chart) How to install solar panel brackets . Solar panel brackets are just a nut and bolt attachment. They come in a variety of styles, and each is slightly different. Many slide onto the solar frame railings and then tighten to hold the panel in place.



The solar panel's output series must also be connected to the inverter's input. Renogy's 3500W 48V Solar Inverter Charger is a powerful solution that combines solar charging, AC/generator battery charging, and battery inverting into one and takes an ???



Materials Needed for Building a Photovoltaic Solar Panel. Of course, you can only build your own solar panel system with the appropriate equipment. Don't worry. Everything you need is listed in this section. Solar Cells. The show's star is solar cells, so you must prioritize buying them before you build a solar panel system.



The best place to build solar farms is on flat land or south-facing slopes; There are currently over 1,000 solar farms in the UK, with a combined capacity of 8.67 gigawatts (GW). And that number's set to grow, especially ???

# HOW TO BEST PLACE PHOTOVOLTAIC PANELS



If solar panel boxes are not available, use any rigid, sturdy box that fits the panels well. Fill any empty space within the box with additional packing material to avoid movement during transit. The final step in the packing process is sealing the boxes securely. Properly close and secure the boxes by reinforcing the seams with heavy-duty



2. Attach the Fixing Bracket to the Solar Panel. Once you've gathered all the tools and followed up on permits and safety requirements, it's time to set up your mounting system. The first step is to attach the fixing bracket to the solar panel. Lay the solar panel face-down on the tarp or canvas to protect the photovoltaic surface.



There are two steps here: turning off the PV system and disconnecting the solar panels. Most repair work involves disconnecting the system, whereas a physical move incorporates the second set of instructions. ???



To find out, we used the MCS PV Output Calculator, which lets MCS-certified solar panel installers calculate the best direction and angle for panels anywhere in the UK. It reveals how much more, and less, energy a panel produces when facing north, south, east and west, and when tilted at various angles from the horizontal. Here's a quick summary: