

HOW TO BUILD AN ENERGY STORAGE POWER STATION



Be sure to build a coal mining platform near your future power plant's location. To make a basic Coal Generator setup, create a foundation over a body of water, then build a Water Extractor and a



Molten salt's physical and thermal properties make it a particularly good candidate for energy storage. It can be pumped just like water and stored in tanks just like water, says Cliff Ho, an



This research underscores the criticality of dams in PSH systems for efficient energy storage and sustainable power generation (3). Controlled Release: Setting up or expanding a pumped storage power plant costs a pretty penny. We're talking huge sums for building one of these facilities, with all the tech and infrastructure it needs. That



For instance, solar energy storage can deliver power during periods of peak demand, when electricity prices are generally higher, and help reduce reliance on fossil fuel-based power stations. Furthermore, solar energy storage can also serve as a backup power source during grid outages or emergencies, increasing overall grid resilience and



Energy and power capacity of candidate storage plants are unconstrained and optimized by the model from the perspective of the grid, such that the model may build storage of any duration and size

HOW TO BUILD AN ENERGY STORAGE POWER STATION



On November 16, Fujian GW-level Ningde Xiapu Energy Storage Power Station (Phase I) of State Grid Times successfully transmitted power. The project is mainly invested by State Grid Integrated Energy and CATL, which is the largest single grid-side standalone station-type electrochemical energy storage power station in China so far.



2MW / 5MWh
Customizable



An energy storage project is a cluster of battery banks (or modules) that are connected to the electrical grid. Then, when the cost of electricity is relatively high, or when power generation capacity is low due to inclement weather or other causes, the operator discharges the batteries, selling the stored energy at a profit.



2MW / 5MWh
Customizable



Storage technologies include pumped hydroelectric stations, compressed air energy storage and batteries, each offering different advantages in terms of capacity, speed of deployment and environmental impact. As we ???



Pumped storage is a method of keeping water in reserve for peak period power demands by pumping water that has already flowed through the turbines back up a storage pool above the power plant at a time when customer demand for energy is low, such as during the middle of the night.



After Coal Plant Dispute, a Minnesota Utility Steps Back from Power Provider: Connexus Energy, the largest electric cooperative utility in Minnesota, said this week it wants to end its membership

HOW TO BUILD AN ENERGY STORAGE POWER STATION



300 MWh is perhaps big or even "huge" for a battery storage but not generally for storing energy. 300 MWh is about the energy that a typical nuclear power plant delivers in 20 minutes. A modern pumped hydro storage, for example (Nant-de-Drance, Switzerland), stores about 20 GWh (with turbines for 900 MW) what is about 67 times the 300 MWh.



On July 20th, the innovative demonstration project of the combined compressed air and lithium-ion battery shared energy storage power station commenced in Maying Town, Tongwei County, Dingxi City, Gansu Province. This is the first energy storage project in China that combines compressed air and lith



3.7se of Energy Storage Systems for Peak Shaving U 32 3.8se of Energy Storage Systems for Load Leveling U 33 3.9ogrid on Jeju Island, Republic of Korea Micr 34 4.1rice Outlook for Various Energy Storage Systems and Technologies P 35 4.2 Magnified Photos of Fires in Cells, Cell Strings, Modules, and Energy Storage Systems 40



This energy storage station is one of the first batch of projects supporting the 100 GW large-scale wind and photovoltaic bases nationwide. It is a strong measure taken by Ningxia Power to implement the "Four Revolutions and One Cooperation" new strategy for energy security, promote the integration of source-grid-load-storage and the



The Gambit Energy Storage Park is an 81-unit, 100 MW system that provides the grid with renewable energy storage and greater outage protection during severe weather. Homer Electric installed a 37-unit, 46 MW system to increase renewable energy capacity along Alaska's rural Kenai Peninsula, reducing reliance on gas turbines and helping to

HOW TO BUILD AN ENERGY STORAGE POWER STATION



More than 65% of the commercial reactors in the United States are pressurized-water reactors or PWRs. These reactors pump water into the reactor core under high pressure to prevent the water from boiling. The water in the core is heated by nuclear fission and then pumped into tubes inside a heat exchanger.



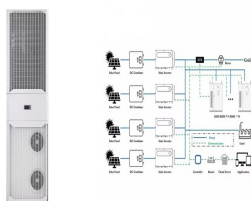
It is not necessary to co-locate energy storage with a solar plant to provide grid services to stabilize the grid (e.g. ancillary services). The main reason that you would co-locate the two systems is to take advantage of the cost savings of shared balance of plant costs including the cost of land, labor, project management, permitting



Pumped-storage hydroelectricity (PSH), or pumped hydroelectric energy storage (PHES), is a type of hydroelectric energy storage used by electric power systems for load balancing. A PSH system stores energy in the form of gravitational potential energy of water, pumped from a lower elevation reservoir to a higher elevation. Low-cost surplus off-peak electric power is typically ???



Pumped storage hydropower (PSH) is a type of hydroelectric energy storage. It is a configuration of two water reservoirs at different elevations that can generate power as water moves down from one to the other (discharge), passing through a turbine.



For a battery energy storage system to be intelligently designed, both power in megawatt (MW) or kilowatt (kW) and energy in megawatt-hour (MWh) or kilowatt-hour (kWh) ratings need to be specified. The power-to-energy ratio is normally higher in situations where a large amount of energy is required to be discharged within a short time period

HOW TO BUILD AN ENERGY STORAGE POWER STATION



??? The paper provides more information and recommendations on the financial side of Pumped Storage Hydropower and its capabilities, to ensure it can play its necessary role in the clean energy transition. Download the Guidance note for de-risking pumped storage investments. Read more about the Forum's latest outcomes



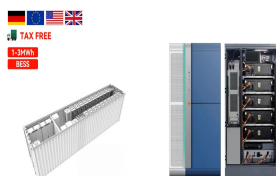
1) Assess long-term storage needs now, so that the most efficient options, which may take longer to build, are not lost. 2) Ensure consistent, technology neutral comparisons between energy storage and flexibility options. 3) Remunerate providers of essential electricity grid, storage, and flexibility services.



A strong CRA will analyze potential thermal, overpressure and toxic risks at the site and the surrounding community. In most cases, a summary of the CRA should be presented back to the community



6 ? With more inverter-based renewable energy resources replacing synchronous generators, the system strength of modern power networks significantly decreases, which may ???



A Battery Energy Storage System (BESS) significantly enhances power system flexibility, especially in the context of integrating renewable energy to existing power grid. It enables the effective and secure integration of a greater renewable power capacity into the grid.

HOW TO BUILD AN ENERGY STORAGE POWER STATION



HOW DO WE GET ENERGY FROM WATER? Hydropower, or hydroelectric power, is a renewable source of energy that generates power by using a dam or diversion structure to alter the natural flow of a river or other body of water. Hydropower relies on the endless, constantly recharging system of the water cycle to produce electricity, using a fuel???water???that is not ???

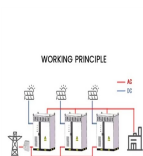


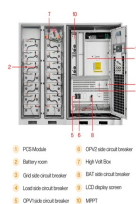
Photo by Consumers Energy. Pumped storage hydropower (PSH) plants can store large quantities of energy equivalent to 8 or more hours of power production. As the country transitions to a 100% clean energy power grid, these plants could play ???



For that purpose???a few hundred megawatts of extra power for a few hours???a lithium battery plant is much cheaper, easier, and quicker to build than a pumped storage plant, says NREL senior research fellow Paul Denholm. But a few hours of energy storage won't cut it on a fully decarbonized grid.



The latest federal forecast for power plant additions shows solar sweeping with 58 % of all new utility-scale generating capacity this year. In an upset, battery storage will provide the second-most new capacity, with 23 %. Wind delivers a modest 13 %, while the long-delayed final nuclear reactor at Vogtle in Georgia will add 2 % of new capacity, assuming it does in fact ???



Pumped-Hydro Energy Storage Potential energy storage in elevated mass is the basis for . pumped-hydro energy storage (PHES) Energy used to pump water from a lower reservoir to an upper reservoir Electrical energy. input to . motors. converted to . rotational mechanical energy Pumps. transfer energy to the water as . kinetic, then . potential energy

HOW TO BUILD AN ENERGY STORAGE POWER STATION



Hydro-electric power storage plants that require man-made dams to produce energy can cost billions of dollars to construct, although they can store significantly more energy than 100MW. The largest hydro storage plant in the world is the Bath County Pumped Storage Station in Virginia, US, which cost \$1.6bn in 1985 and has a storage capacity of