

# HOW TO CALCULATE THE STATIC LOSS OF FLYWHEEL ENERGY STORAGE



Can flywheel energy storage systems recover kinetic energy during deceleration? Flywheel energy storage systems (FESS) can recover and store vehicle kinetic energy during deceleration. In this work, Computational Fluid Dynamics (CFD) simulations have been carried out using the Analysis of Variance (ANOVA) technique to determine the effects of design parameters on flywheel windage losses and heat transfer characteristics.



What causes standby losses in a flywheel rotor? Aerodynamic drag and bearing friction are the main sources of standby losses in the flywheel rotor part of a flywheel energy storage system (FESS). Although these losses are typically small in a well-designed system, the energy losses can become significant due to the continuous operation of the flywheel over time.



What is flywheel energy storage system (fess)? Flywheel generator has a higher energy density compared to conventional capacitor banks. Flywheel Energy Storage System (FESS), with a capacity of 10 MJ @ 17000 rpm with 10% discharge rate a per cycle, is to be constructed at IIT Delhi. The planned setup will have an Energy storage density of 77.5 J/g and a power density of 1.94 kW/g.



What is the operational mechanism of a flywheel? The operational mechanism of a flywheel has two states: energy storage and energy release. Energy is stored in a flywheel when torque is applied to it. The torque increases the rotational speed of the flywheel; as a result, energy is stored. Conversely, the energy is released in the form of torque to the connected mechanical device.



Can small applications be used instead of large flywheel energy storage systems? Small applications connected in parallel can be used instead of large flywheel energy storage systems. There are losses due to air friction and bearing in flywheel energy storage systems. These cause energy

# HOW TO CALCULATE THE STATIC LOSS OF FLYWHEEL ENERGY STORAGE

---



losses with self-discharge in the flywheel energy storage system.

# HOW TO CALCULATE THE STATIC LOSS OF FLYWHEEL ENERGY STORAGE



Why do flywheel energy storage systems have a high speed? There are losses due to air friction and bearing in flywheel energy storage systems. These cause energy losses with self-discharge in the flywheel energy storage system. The high speeds have been achieved in the rotating body with the developments in the field of composite materials.



Lets check the pros and cons on flywheel energy storage and whether those apply to domestic use (): Compared with other ways to store electricity, FES systems have long lifetimes (lasting decades with little or no ???



Video Credit: NAVAJO Company on The Pros and Cons of Flywheel Energy Storage. Flywheels are an excellent mechanism of energy storage for a range of reasons, starting with their high efficiency level of 90% ???



Flywheel energy storage systems are feasible for short-duration applications, which are crucial for the reliability of an electrical grid with large renewable energy penetration. ???



Flywheel energy storage (FES) is a technology that stores kinetic energy through rotational motion. The stored energy can be used to generate electricity when needed. The formula for calculating the kinetic energy of a ???

# HOW TO CALCULATE THE STATIC LOSS OF FLYWHEEL ENERGY STORAGE



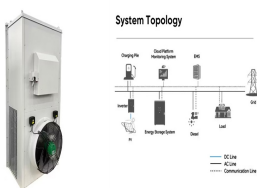
In essence, a flywheel stores and releases energy just like a figure skater harnessing and controlling their spinning momentum, offering fast, efficient, and long-lasting energy storage. Components of a Flywheel Energy Storage ???



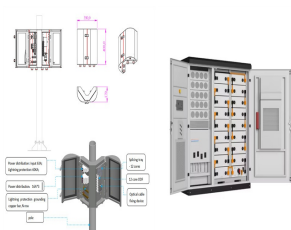
Our flywheel energy storage calculator allows you to compute all the possible parameters of a flywheel energy storage system. Select the desired units, and fill in the fields related to the quantities you know: we will immediately compute ???



Flywheel energy storage systems (FESS) can recover and store vehicle kinetic energy during deceleration. In this work, Computational Fluid Dynamics (CFD) simulations have been carried ???



Flywheel energy storage is a promising technology that can provide fast response times to changes in power demand, with longer lifespan and higher efficiency compared to other energy storage technologies.



The flywheel is the simplest device for mechanical battery that can charge/discharge electricity by converting it into the kinetic energy of a rotating flywheel, and vice versa. The energy storage

# HOW TO CALCULATE THE STATIC LOSS OF FLYWHEEL ENERGY STORAGE



To determine the appropriate size of a flywheel energy storage system, a flywheel energy storage calculator can be used. This calculator takes into account several factors, including the ???



A flywheel, in essence is a mechanical battery - simply a mass rotating about an axis. Flywheels store energy mechanically in the form of kinetic energy. They take an electrical input to accelerate the rotor up to speed by ???