

HOW TO CHECK IF PHOTOVOLTAIC PANELS ARE FALSELY LABELED



Can solar panel quality defects be detected without testing equipment? Some solar panel quality defects can not be detected without testing equipment, such as electroluminescence (EL) testers, sun simulators, thermal cameras, or resistance testers. However, there are also several defects that can be identified visually.



What if a solar PV module sample is rejected? A solar PV module sample will be considered to be rejected due to its observable quality defects if any one of the following conditions are met: If any single observed defect has been evaluated as a Severity of 5. A Severity of 5 indicates a major quality issue; a critical failure or a fraudulent module.



How do you know if a photovoltaic module is bad? Where cells have become shiny or changed colour locally, cells have a poor or degrading anti-reflective coating which is an indicator of poor module performance. a?? IEC 61215: Crystalline silicon terrestrial photovoltaic (PV) modules - Design qualifications and type approval 2nd Edition, a?? International Electrotechnical Commission, Geneva, 2005.



Why are PV and battery labels required? PV and battery labels are required to meet certain standards in order to be durable for the entire life of the system. The requirements listed in 2.1.2 ensure that the labels used meet the compliance requirements for the specific system type. NOTE a?? The following is an amalgamation of the requirements across the standards.



What is a severe rating on a solar PV module? The schematics in the Terminology section describe where each component is found on a common solar PV module. A Severity Rating is also defined to give users guidelines on how concerning a particular defect may be.

HOW TO CHECK IF PHOTOVOLTAIC PANELS ARE FALSELY LABELED



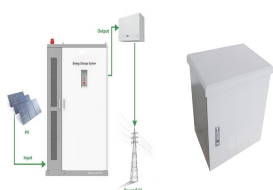
Why do solar panels have scratches on the glass cover? On average, small and large scratches on the glass cover of solar modules are found during more than 70% of independent 3rd party quality inspections, such as those performed by Sinovoltaics Consultancy Services. This is a major and prevalent quality issue.



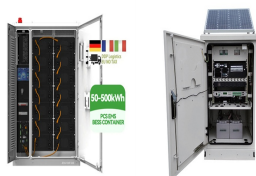
You can use this serial number to compare with the records on the official website, or contact the customer service of jinko solar panel to identify the authenticity. If the serial number of one of your jinko solar panels does not a?|



Appearance checks, label verification, and electrical parameter measurements are effective ways to ensure the quality of photovoltaic panels. However, some potential issues may require professional testing to uncover.



Solar Module Label. Example label. The example photo of a solar PV label indicates name and address of the manufacturer and the solar module type (blackened). Right below, the electrical ratings indicate the major performance a?|



This ensures the digital twin of the solar PV system is updated and accurate. The Raptor Maps app provides an intuitive and fast method of digitizing serial numbers for PV modules. This article walks through how to use the Raptor Maps app to successfully scan and store serial numbers into the digital twin for future use.

HOW TO CHECK IF PHOTOVOLTAIC PANELS ARE FALSELY LABELED



The simplest way to test your solar panel output is to use a multimeter. A multimeter is an electronic device that can measure the voltage, current, and resistance of an electrical circuit. To test your solar panel output, connect the multimeter to the solar panel output terminals and measure the voltage and current.



Evaluating the efficiency of a solar panel involves a comparative analysis of the solar energy received from the sun and the resulting electricity produced by the panel. It is impractical for a solar panel to transform all of the a?|



Key concepts and items required for solar panel wiring Solar Panel String. The "solar panel string" is the most basic and important concept in solar panel wiring. This is simply several PV modules wired in series or a?|



Where To Get Solar Panel Labels and Placards. Get Solar Labels is the place to go if you need labels for a PV system. We provide high-quality engraved solar placards and permanent labels for systems built to withstand decades of outdoor conditions. Browse our selection online or contact our staff with any questions about what labels your system

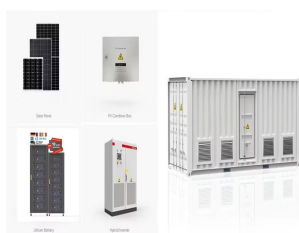


The first two measurements use the solar panel on its own. When disconnecting the solar panel, regulator and battery, take care to disconnect the panel from the regulator first, and then disconnect the regulator from the battery. When reconnecting, connect the regulator to the battery first, and then connect to the solar panel.

HOW TO CHECK IF PHOTOVOLTAIC PANELS ARE FALSELY LABELED



The temperature coefficient is the electrical behavior of the solar panels from a standard temperature of 25 degrees. The lower coefficient, the better the solar panel is. If the coefficient is higher, the PV panels will not produce much electricity. It also depicts a lower-quality solar panel. Average coefficient a?? 0.50% a?? Reasonable



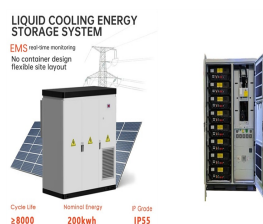
Solar panel efficiency and power production can differ due to a variety of factors, including the number of peak sun hours in a day, shading issues, the outside temperature, the direction the solar panels are facing, the a?|



Solar panel inverter problems, dirty solar panels, pigeon problems under solar panels, generation meter and electrical problems with solar PV, and much more First check the solar pv breaker in your consumer unit. It should be in the on/up position. If it's in the off/down position (which can happen after a power cut) try to flick the



In solar panel language, "hot" is considered 25°C and beyond. It's important to note that while it might be 25 degrees outside, at the panel, it could be as much as twice that. So, if it is around 40 degrees at the panel, your panel, in this example, will be operating around 6% less efficiently. Remember, this is a pretty good number.



Understanding the various terms and ratings found on a solar panel's spec sheet can be confusing. To provide clarity, we will explain each of them in detail. This will help you learn how to read solar panel specifications: 1. Standard Test Conditions. Standard Test Conditions (STC) refer to the set of criteria under which a solar panel is tested.

HOW TO CHECK IF PHOTOVOLTAIC PANELS ARE FALSELY LABELED



Knowing how to test solar panels will ensure that you're getting the biggest benefit possible from your system. There are some simple solar panel tests you can do yourself and we'll take you through them in this article. If it turns out that your solar panels aren't working then you should contact an MCS solar panel installer.



First: Examine the label . Your first step to take when inspecting used solar panels you're considering buying is to check the condition of the label, which will either be applied to the front or back side of the module. Ask the seller to send a photo of the module's front and back sides. The label is important for three reasons.



By monitoring your solar production and usage, you can make adjustments to your energy usage and save money on your energy bills.. Types of Solar Panel Meters. There are two types of solar panel meters: Analogue Meters: a?)



Stay safe and compliant with DuraLabel's free Solar PV Labeling Best Practice Guide. Download for NEC and ANSI labeling solutions. Skip to content. 1-888-326-9244 | Contact | Resources Pipe Marking Instant Action Guide Pipe Marking Wall Chart Pipe Marking Basics Getting Started with Pipe Marking SEE MORE



The specifications outlined in a solar panel's datasheet provide insights into its expected performance under specific conditions. When shopping for solar panels, it can be hard to identify the most crucial metrics to pick the best solar panel.. We recommend focusing on key specifications such as power output, efficiency, and the temperature coefficient of the panel.

HOW TO CHECK IF PHOTOVOLTAIC PANELS ARE FALSELY LABELED



Check with your local authorities to be certain which code revision is currently in force before labeling. 690.31(D)(2) Unless located and arranged so the purpose is evident, the following wiring methods and enclosures that contain PV system DC circuit conductors shall be marked with the wording PHOTOVOLTAIC POWER SOURCE or SOLAR PV DC



This guide is an essential resource for improving the safety of photovoltaic systems by ensuring compliance with the latest solar labeling requirements. Learn how to meet NEC standards, understand which solar components require a?



Solar Module Cell: The solar cell is a two-terminal device. One is positive (anode) and the other is negative (cathode). A solar cell arrangement is known as solar module or solar panel where solar panel arrangement is known as photovoltaic array. It is important to note that with the increase in series and parallel connection of modules the power of the modules also gets added.



As solar energy becomes more popular and affordable, homeowners across the country are becoming more interested in harnessing the power of the sun. While the best solar panels can offer significant benefits, including reduced energy costs and a smaller carbon footprint, the growing industry has unfortunately attracted its share of scammers and unethical a?



The first two measurements use the solar panel on its own with nothing else connected. When disconnecting the panel, regulator and battery, take care to disconnect the panel from the regulator first, and then disconnect the regulator from the battery. When reconnecting, connect the regulator to the battery first and then connect to the solar panel.

HOW TO CHECK IF PHOTOVOLTAIC PANELS ARE FALSELY LABELED



Module open circuit voltage (Voc) can be found on the module label or data sheet. The PV string voltage is calculated by multiplying the module Voc by the number of modules in series. De-energize and lockout/tagout (LOTO) where you're working check that there's no current in the circuit. Then remove both ends of the conductor from its



Let's check how easy it is to check the polarity of a solar panel, plus some essential solar knowledge. How to check solar panel polarity: To check solar panel polarity, you need a voltmeter or multimeter. First, you must turn off the power going into your DC circuit breaker box. Then, head outside and remove the covers protecting your PV



How to start a solar panel installation business a?? step by step. With the first steps in setting up your solar panel business sorted, it's time to consider some practicalities. 1. Research the market and find your USP. Taking time to research the solar panel industry can go a long way towards helping set up your business.



new breaker boxes and panels are moving to powder-coat paint surfaces, which are low-energy surfaces that are not friendly to typical adhesives. Adhesives specifically designed for only an a?]



These can normally be found on the back of your solar panel system. Check the sunlight conditions are suitable to produce readings on your system. Ideal conditions are bright clear sunlight directly on the panel. Remember safety first when testing your solar panels. If you need to access the panels via scaffolding, it may be necessary to hire a

HOW TO CHECK IF PHOTOVOLTAIC PANELS ARE FALSELY LABELED



The NEC690 Building Inspector's Guide is a set of reference materials developed for Building Inspectors and AHJ Officials as it relates to Article 690, of the National Electrical Code (NEC a?)