

# HOW TO CONNECT 36V PHOTOVOLTAIC PANELS



How do I connect a 12V solar panel to a 24V Solar System? This can be done either by using 24V solar panels and connecting them in parallel(since this leaves voltage alone) or by connecting sets of two 12V solar panels in series (since this will double the voltage to 24V) and everything else in parallel.



How to wire solar panels & batteries in series? Moreover, you can power up the DC load directly connected to the DC output terminals in the solar charge controller. To wire two or more solar panels and batteries in series, simply connect the positive terminal of solar panel or battery to the negative terminal of solar panel or battery and vice versa (respectively) as shown in the fig below.



How do I connect solar panels to my house wiring? Once you have a clear understanding of the regulations, you can begin the process of connecting your solar panels to your house wiring. This involves several steps, including mounting the solar panels, installing an inverter, connecting the panels to the inverter, and finally, connecting the inverter to your house wiring.



Can I connect different solar panels in a solar array? Connect only in series panels of the different brands and of the same current. Connect in parallel panels of different brands and of the same voltage. Connecting different solar panels in a solar array is not recommended since either the voltage or the current might get reduced.



Should I connect solar panels to my house wiring in the UK? Regular maintenance and monitoring of your solar panel system will help ensure its optimal performance and longevity. Connecting solar panels to your house wiring in the UK allows you to harness renewable energy and reduce your reliance on the grid. This step-by-step guide will walk you through the process, ensuring a safe and efficient connection.

# HOW TO CONNECT 36V PHOTOVOLTAIC PANELS



Can I connect more than one solar panel? Connecting more than one solar panel in series, in parallel or in a mixed-mode is an effective and easy way not only to build a cost-effective solar panel system but also helps us add more solar panels in the future to meet our increasing daily needs for electricity. How to connect your solar panels depends on:



Connect the solar panel to the solar generator following the instruction manual. Make sure the panel is compatible with your generator. Step 2: Plug in Your Ebike Charger. 36V 26.5Ah lithium battery; 170W solar panel; MPPT charge controller; According to our calculator, it will take around 6.9 peak sun hours for my solar panel to fully



You can't simply connect your solar panels to a battery directly and expect it to work. Solar panels output more than their nominal voltage. For example, a 12v solar panel might put out up to 19 volts. The 20A, 30A, and ???



The process of connecting the solar panels to the batteries involves several key steps. 1. Determine the Voltage of the Solar Panels: Before connecting the solar panels to the batteries, it is crucial to determine their voltage rating. This information can usually be found on the back of the solar panel or in the manufacturer's specifications.



When we connect N-number of solar cells in series then we get two terminals and the voltage across these two terminals is the sum of the voltages of the cells connected in series. For example, if the of a single cell is 0.3 V and 10 such ???

# HOW TO CONNECT 36V PHOTOVOLTAIC PANELS



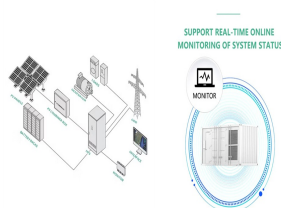
II. Step-by-Step Guide to Connecting Solar Panels to an MPPT Charge Controller. Now, let's explore the step-by-step process of connecting solar panels to an MPPT charge controller for optimal performance. A. Pre ???



The Solar Panel Installation Process. Now that you've explored the options between DIY and professional installation let's delve into the intricacies of the solar panel installation process. This step-by-step guide will provide a comprehensive understanding of what to expect when installing solar panels on your residential property.



You can charge a lithium battery with a solar panel but knowing how to do it can be tricky. The solar panel must have the correct output power requirements for the battery to charge. If you use a charge controller, ???



Solar panel voltages must match to properly connect together, so check voltage ratings before connecting panels. Most panels will be either 12V or 24V nominal. b) Wiring configuration is important ??? panels can be linked in series or parallel depending on the system voltage and amperage requirements.



Learn how to properly connect photovoltaic panels, exploring the pros and cons of series, parallel, and series-parallel configurations. Ensure optimal performance and safety in your PV ???

# HOW TO CONNECT 36V PHOTOVOLTAIC PANELS



The article provides a guide for setting up a DIY solar panel installation, starting with planning and calculating electricity needs. It outlines the components needed such as solar panels, inverters, wiring, and mounting materials.



There should be ports in the device for connecting the Battery and Solar Panel. It all boils down to not messing up the terminals. After you set up your Step Down Converter, you should get a screwdriver and multimeter. Hook the multimeter up to measure voltage. Now you should be able to spot two circular button-like things.



Parallel Connected PV Panels with Series Connected Batteries for 24V System. During the normal sunshine/day, the solar panels can feed-up the power supply through an inverter and Auto UPS Wiring to the AC loads. During night/shading, the AC load can be powered-up through batteries (stored energy as backup power) as the batteries are connected to the inverter input ???



Once you have a clear understanding of the regulations, you can begin the process of connecting your solar panels to your house wiring. This involves several steps, including mounting the solar panels, installing an inverter, ???



Here's the wiring diagram showing how to connect a solar panel to a battery: It's important to understand the following: Don't connect a solar panel directly to a battery. Doing so can damage the battery. Instead, connect both battery and solar panel to a solar charge controller. It's recommended you fuse your system.

# HOW TO CONNECT 36V PHOTOVOLTAIC PANELS

114KWh ESS



114KWh ESS

In this solar panel wiring installation tutorial, we will show how to wire two solar panels and batteries in series with automatic UPS/Inverter for 120V-230V AC load, battery charging and direct DC load from the charge controller. PV ???



Wiring solar panels in series is arguably the easiest of the three methods. In series wiring, the positive of one panel connects to the negative of the next, and so on. This creates a string of panels with a negative wire at the ???



MPPT stands for Maximum Power Point Tracker; these are far more advanced than PWM charge controllers and enable the solar panel to operate at its maximum power point, or more precisely, the optimum voltage and current for maximum power output. Using this clever technology, MPPT solar charge controllers can be up to 30% more efficient, depending on the ???



You can connect three 12V solar panels in series, increasing the voltage output and effectively charging the 36V battery or use a transformer to boost the voltage from a single 12V solar panel. However, purchasing a transformer may not be cost-effective, therefore, connecting multiple solar panels in series is generally more practical to achieve the required voltage for charging a 36V ???



How to Connect Solar Panels in Series or Parallel. Understanding solar panel installation takes some long-winded technical explanations. The gist of all that jargon is that a solar PV system that works ???

# HOW TO CONNECT 36V PHOTOVOLTAIC PANELS



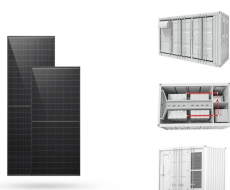
If your two panels are putting out 18Vmp, then the maximal charging voltage will be ~36V, less than the bulk starting voltage you need. So, as Photowhit indicates, you'll need 3 panels in ???



You should put the 36V panels in parallel and the 100W 18V panels in pairs/series to make 36V too. 36V is ideal for a 12V battery with an MPPT controller. Do NOT use a PWM controller, just dump what you may have.



Hi, I am new to this technology but have been interested about solar energy since way back 30 years ago in high school, i recently acquired a solar pv system from a friend, actually separate parts bought separately from different sources, i have a 12/24v 20a solar controller, a 300w 36v panel, a 12/24v 3000w inverter and a 12v 500Ah battery. the problem ???



A solar panel wiring diagram (also known as a solar panel schematic) is a technical sketch detailing what equipment you need for a solar system as well as how everything should connect together. There's no such ???



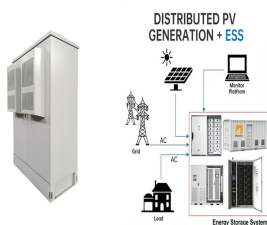
For example, wiring two 12V solar panels in series produces 24V, three 12V panels produce 36V, and so on. 24V panels can also be combined to hit the target system voltage. Follow these steps to connect solar panels in series: Use MC4 branch connector cables or 10-12 AWG copper wire to link the panels. Prepare weather-proof connections.



# HOW TO CONNECT 36V PHOTOVOLTAIC PANELS



Learn how to wire a 12V solar panel system with this straightforward wiring diagram and step-by-step guide. Wiring a 12V solar panel typically involves connecting the positive and negative terminals of the panel to the ???



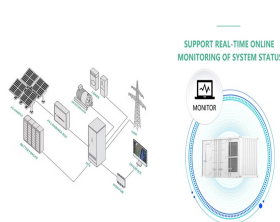
Here are the detailed steps on how to correctly link a solar panel system to a 12-volt battery: Before mounting the solar panel and connecting solar panel to battery, please choose the most suitable location to set it up. We ???



MC4 Connectors: These connectors are designed specifically for solar panels and allow for secure and weatherproof connections. Solar Cable: Use solar-rated cables with appropriate gauge size to minimize power loss ???



How to convert 36v solar panel to 18v; How long does it take to charge a 12v battery with an 18v solar panel; Can a 36v panel charge a 12v battery; You can connect a 36-volt solar panel to an 18-volt battery or even use two different panels in series and the other in parallel (for example,



If you're using more than one solar panel, connecting each PV module together and to a portable power station or other balance of system is essential. Solar panels on their own are useless. The magic happens when you connect a PV module to a solar inverter or charge controller to convert or store electricity.