

HOW TO CONNECT A HOUSEHOLD ENERGY STORAGE METER



How does a utility meter connect to a solar panel? There is an ALTERNATIVE UTILITY CONNECTION called a "Supply or Line Side" connection. This connection is made BEFORE the main breaker. A junction box is added between the utility meter and the main service panel. Then the wires from the utility meter, the main breaker panel, and the PV solar are connected in the junction box.



How do I install a remote energy meter? Install the external antenna on the end of the Remote Energy Meter. If installing the Remote Energy Meter in a metal enclosure: Drill a 1/4 -inch hole in the bottom of the enclosure. Using the provided antenna extender, route the antenna through the bottom of the enclosure as shown below.



How many wires does a solar energy meter use? Delta systems utilize four wires- three hot and one ground. The SolarEdge Energy Meter with Modbus Connection (also referred to as "the meter") enables measuring the power and energy of the photovoltaic (PV) system. The meter is built into an enclosure and requires two Current Transformers (CTs). The CTs are available from SolarEdge.



How do I use the meter function? Select Meter Function, and choose one of the following options: Export+Import: The meter is installed at the grid connection point and reads pulses from both directions - export and import energy. Consumption: The meter is installed at the load consumption point and reads the energy consumed by the site.



How do I connect a RS485 meter to a StorEDGE inverter? In the Energy Management system, the inverters are connected on an RS485 bus. Since the meter (and the battery in a StorEdge system) is connected to one of the inverters, RS485 connectors (RS485-1), an RS485 Expansion Kit is installed in this inverter and is used to connect the inverter RS485 bus (RS485-E). The Home Energy Management ZigBee Card

HOW TO CONNECT A HOUSEHOLD ENERGY STORAGE METER



How do you connect a utility meter to a main breaker? As with most things electrical, there are many ways to do the job. There is an ALTERNATIVE UTILITY CONNECTION called a "Supply or Line Side" connection. This connection is made BEFORE the main breaker. A junction box is added between the utility meter and the main service panel.



A best smart home energy monitor can also prevent costly repairs by sending updates when critical systems, such as a sump pump, stop running. As our homes become more connected an energy monitor is a must-have device to keep track of your home energy. As ???



In the "Energy usage" tab, you can also find your usage history as an overview by month. This could help you find patterns in your use so you can modify habits if you need to. For example, if you notice a spike in summer months compared with your use in spring, you could plan ahead for summer and find ways to reduce your usage.



Read more about Home Energy Monitor V2 here. Goal. Before jumping in, I set myself these goals for the project: Make a non-invasive energy monitor for the entire apartment. Meaning: no wire-cutting and not putting a meter between every socket and light bulb. Take measurements every second to get an accurate picture of electricity consumption.



Onsite energy storage. Energy storage systems on your property are also behind-the-meter systems. Electricity stored in a home battery, for example, goes directly from the battery to your home appliances without passing through an electrical meter. Microgrids. A more complicated type of BTM energy system is a microgrid. Microgrids are miniature

HOW TO CONNECT A HOUSEHOLD ENERGY STORAGE METER



Whole-home energy monitors connect to individual circuits on the electrical panel. Some monitors only provide cumulative data on power consumption by all the appliances plugged into a particular circuit. tracking your home's energy usage easier by saving the time and effort you need to visit the electrical panel or read meters. 6.) Track



Learn more about how you can gain control over your home's energy through the SmartThings app, and make informed decisions about your energy use. Memory & Storage To see your home's energy usage, you will need to connect a smart meter to SmartThings. You can also track a compatible Samsung appliance by connecting it in the SmartThings app



Key Features of Digital Energy Meters. Digital energy meters bring big changes to how we measure energy use. They have new features that old meters don't have. Fenice Energy, a top player in clean energy, points out what is great about these meters. Real-Time Monitoring. Digital energy meters show you how much energy you're using right now.



Most solar panel installations throughout the U.S. are connected to the grid. With grid-tied systems, you can draw power from the power grid when your solar panel system isn't producing electricity. Additionally, you can supplement your energy needs with electricity from the grid when the sun is shining if you use more electricity than your solar panels produce.



When connecting a home energy system to the where the excess electricity generated by grid-connected renewable energy systems "turns back" your electricity meter as it is fed back into the grid. Photovoltaics, Dispersed Generation, and Energy Storage for more information. Underwriters Laboratories (UL) has developed UL 1741 to certify

HOW TO CONNECT A HOUSEHOLD ENERGY STORAGE METER



This allows for energy storage and backup power during times when the solar panels are not producing enough energy to meet the demand. 3. Grid Connection. A hybrid solar inverter can be connected to the grid and can feed excess energy ???



Analog meters include a series of dials that must be read manually each month, and customers who use them can learn to read their own meters to help them track their usage and conservation efforts. If you have an analog meter, an NV Energy representative will visit your home each month to read your meter.



A best smart home energy monitor can also prevent costly repairs by sending updates when critical systems, such as a sump pump, stop running. As our homes become more connected an energy monitor is a must-have device to keep track of your home energy. As part of the research for this article, we purchased a leading energy monitor.



Connect the solar panels either directly to a power inverter and then connect it to the home grid, or connect the inverter to the battery and then to the home power grid. This power inverter converts the solar energy into energy that is consumable at home.

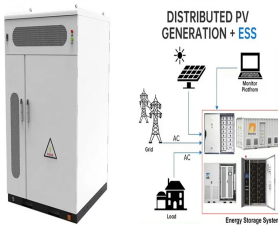


??? Reorient or relocate the receiving antenna. ??? Increase the separation between the equipment and the receiver. ??? Connect the equipment to an outlet on a circuit different from that to which the receiver is

HOW TO CONNECT A HOUSEHOLD ENERGY STORAGE METER



Some smart meters use a RF transmitter to connect. The meters connect to something called a data concentrator, which pulls together the data from several smart meters and sends it to the central grid. This is typically mounted on a utility pole. Smart meters do not connect directly to the internet. Customers get the data from the central



Explore the functionality and advantages of smart meters for effective energy management and how they lead to cost savings in your household.

Smart meters come with in-home displays or apps for real-time energy tracking. efficiently regulates voltage and current from solar panels to prevent battery overcharging and enable safe solar



The growth of battery storage in the power sector has attracted a great deal of attention in the industry and media. Much of that attention focuses on utility-scale batteries and on batteries for commercial and industrial customers. While these larger batteries are critical segments of the energy-storage market, the rapid growth of residential energy storage is ???

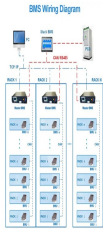


Your smart meter will come with an in-home display which will show you how much energy you're using in pounds and pence in near real time. To get the best out of your smart meter, you should monitor your energy usage regularly via your display. With a smart meter, you no longer need to give your energy supplier manual meter readings.

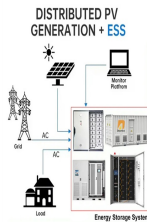


Key Takeaways. Understand the nuanced principle of energy meter technology that captures your electricity usage.; Discover the cutting-edge features of electronic energy meters enhancing accuracy and security. Gain insights into how smart meters are changing the game with remote communication and advanced data management.

HOW TO CONNECT A HOUSEHOLD ENERGY STORAGE METER



Home Energy Management with StorEdge (without Backup) Home Energy Management products can be installed in a StorEdge system, further increasing the self-consumption of the site. 4 Home Energy Management with StorEdge (with Backup) 6 Connection to Monitoring Portal, Single Inverter How to connect a Home Energy



Thermal stores are highly insulated water tanks that can store heat as hot water for several hours. They usually serve two or more functions: Provide hot water, just like a hot water cylinder. Store heat from a solar thermal system or biomass boiler, for providing heating later in the day.; Act as a "buffer" for heat pumps to meet extra hot water demand.



However, the secure wireless national connection used is only for smart meters. The smart devices in your home, including your electricity and gas meters all connect through a communications hub. Usually attached to, or a part of, your energy meter, this hub allows your smart meter to instantly communicate with your in-home display through the



2MW / 5MWh
Customizable



If the main electrical meter is installed in a separate consumption CTs to monitor the home's consumption. Do this by installing two consumption CTs on each line conductor and then parallel-connecting the output conductors at the Envoy-S CT wiring terminals or in a wire connector prior to landing in the Envoy-S terminals.



Smart meters are the next generation of electricity meters. By the end of 2024, every home, farm and business in Ireland will have the option to have a smart meter installed. Smart meters are an upgrade from traditional meters. Traditional meters require manual readings and ???