

HOW TO DESIGN ENERGY STORAGE CAPACITY SYSTEM



How are grid applications sized based on power storage capacity? These other grid applications are sized according to power storage capacity (in MWh): renewable integration, peak shaving and load leveling, and microgrids. BESS = battery energy storage system, h = hour, Hz = hertz, MW = megawatt, MWh = megawatt-hour.



What are the parameters of a battery energy storage system? Several important parameters describe the behaviors of battery energy storage systems. Capacity[Ah]: The amount of electric charge the system can deliver to the connected load while maintaining acceptable voltage.



What is a battery energy storage system (BESS)? One energy storage technology in particular, the battery energy storage system (BESS), is studied in greater detail together with the various components required for grid-scale operation. The advantages and disadvantages of different commercially mature battery chemistries are examined.



What is energy storage system? Source: Korea Battery Industry Association 2017 ???Energy storage system technology and business model???. In this option, the storage system is owned, operated, and maintained by a third-party, which provides specific storage services according to a contractual arrangement.



Can a battery energy storage system be used as a reserve? The BESS project is strategically positioned to act as a reserve, effectively removing the obstacle impeding the augmentation of variable renewable energy capacity. Adapted from this study, this explainer recommends a practical design approach for developing a grid-connected battery energy storage system. Size the BESS correctly.

HOW TO DESIGN ENERGY STORAGE CAPACITY SYSTEM



What are the performance parameters of energy storage capacity? Our findings show that energy storage capacity cost and discharge efficiency are the most important performance parameters. Charge/discharge capacity cost and charge efficiency play secondary roles. Energy capacity costs must be ???US\$20???kWh ???1 to reduce electricity costs by ???10%.



It can be compared to the nameplate rating of a power plant. Power capacity or rating is measured in megawatts (MW) for larger grid-scale projects and kilowatts (kw) for customer-owned installations. Energy storage capacity: The amount of energy that can be discharged by the battery before it must be recharged.



3.7se of Energy Storage Systems for Peak Shaving U 32 3.8se of Energy Storage Systems for Load Leveling U 33 3.9ogrid on Jeju Island, Republic of Korea Micr 34 4.1rice Outlook for Various Energy Storage Systems and Technologies P 35 4.2 Magnified Photos of Fires in Cells, Cell Strings, Modules, and Energy Storage Systems 40

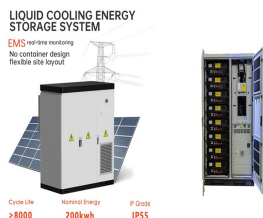


Energy storage systems (ESS) are highly attractive in enhancing the energy efficiency besides the integration of several renewable energy sources into electricity systems. While choosing an energy storage device, the most significant parameters under consideration are specific energy, power, lifetime, dependability and protection [1]. On the



1 INTRODUCTION. Buildings contribute to 32% of the total global final energy consumption and 19% of all global greenhouse gas (GHG) emissions. 1 Most of this energy use and GHG emissions are related to the operation of heating and cooling systems, 2 which play a vital role in buildings as they maintain a satisfactory indoor climate for the occupants. One way ???

HOW TO DESIGN ENERGY STORAGE CAPACITY SYSTEM



In previous posts in our Solar + Energy Storage series we explained why and when it makes sense to combine solar + energy storage and the trade-offs of AC versus DC coupled systems as well as co-located versus standalone systems.. With this foundation, let's now explore the considerations for determining the optimal storage-to-solar ratio.



Storage facilities differ in both energy capacity, which is the total amount of energy that can be stored (usually in kilowatt-hours or megawatt-hours), and power capacity, which is the amount of energy that can be released at a given time (usually in kilowatts or megawatts). Existing compressed air energy storage systems often use the



Energy storage capacity: Determining the appropriate energy storage capacity is essential to meet the specific requirements of the application. Factors such as peak demand, expected duration of



1. The new standard AS/NZS5139 introduces the terms "battery system" and "Battery Energy Storage System (BESS)". Traditionally the term "batteries" describe energy storage devices that produce dc power/energy. However, in recent years some of the energy storage devices available on the market include other integral



When adding cells to a battery pack configuration, the energy capacity increases. Therefore, adding parallel cells to a super cell increases the pack's energy capacity, as does connecting an additional super cell in series. ???

HOW TO DESIGN ENERGY STORAGE CAPACITY SYSTEM



Europe and China are leading the installation of new pumped storage capacity ??? fuelled by the motion of water. Batteries are now being built at grid-scale in countries including the US, Australia and Germany. Thermal energy storage is predicted to triple in size by 2030. Mechanical energy storage harnesses motion or gravity to store electricity.



"The report focuses on a persistent problem facing renewable energy: how to store it. Storing fossil fuels like coal or oil until it's time to use them isn't a problem, but storage systems for solar and wind energy are still being developed that would let them be used long after the sun stops shining or the wind stops blowing," says Asher Klein for NBC10 Boston on MIT's "Future of ???"



Several concepts and parameters shape battery energy storage system design. Energy storage capacity dictates how much energy can be stored, while power rating influences how quickly energy can be discharged. Charge and discharge efficiency measure the effectiveness of ???



These systems and technologies are commonly used to meet society's energy needs, particularly in light of the environmental challenges society faces (Ravestein et al. [1] The term "intermittency"



Learn how battery energy storage systems (BESS) work, and the basics of utility-scale energy storage. wired together to create a module. The modules are then stacked and combined to form a battery rack. Capacity or resource adequacy. Energy storage provides additional local and system capacity at the most critical times.

HOW TO DESIGN ENERGY STORAGE CAPACITY SYSTEM



Energy storage systems for electricity generation operating in the United States Pumped-storage hydroelectric systems. Pumped-storage hydroelectric (PSH) systems are the oldest and some of the largest (in power and energy capacity) utility-scale ESSs in the United States and most were built in the 1970's. PSH systems in the United States use electricity from electric power grids to ???



Pumped-Hydro Energy Storage Potential energy storage in elevated mass is the basis for . pumped-hydro energy storage (PHES) Energy used to pump water from a lower reservoir to an upper reservoir Electrical energy. input to . motors. converted to . rotational mechanical energy Pumps. transfer energy to the water as . kinetic, then . potential energy



430KWH
ESS Capacity
2019 Data



Large-scale solar is a non-reversible trend in the energy mix of Malaysia. Due to the mismatch between the peak of solar energy generation and the peak demand, energy storage projects are essential and crucial to optimize the use of this renewable resource. Although the technical and environmental benefits of such transition have been examined, the profitability of ???



ENERGY MANAGEMENT SYSTEMS (EMS) 3 management of battery energy storage systems through detailed reporting and analysis of energy production, reserve capacity, and distribution. Equipped with a responsive EMS, battery energy storage systems can analyze new information as it happens to maintain optimal performance throughout variable



Basic design concepts; Electrical power peak demand reduction; Fig. 1 Central Energy Plant at Texas Medical Center. TES Basic Design Concepts. Thermal energy storage systems utilize chilled water produced during off-peak times ??? typically by making ice at night when energy costs are significantly lower which is then stored in tanks (Fig. 2

HOW TO DESIGN ENERGY STORAGE CAPACITY SYSTEM



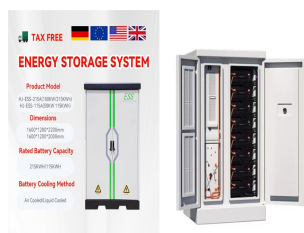
Annual added battery energy storage system (BESS) capacity, % 7
Residential Note: Figures may not sum to 100%, because of rounding. including the overall design and development of energy management systems and other software to make BESS more flexible and useful. We expect



A typical sensible thermal energy storage system I consisted of storage material(s), a container, and energy charging/discharging out devices or sub-systems. Heat insulation in containers is required to prevent heat losses. The common sensible thermal energy storage systems used in practical applications can be listed as follows: (a)



Storage capacity is the amount of energy extracted from an energy storage device or system; usually measured in joules or kilowatt-hours and their multiples, it may be given in number of hours of electricity production at power plant nameplate capacity; when storage is of primary type (i.e., thermal or pumped-water), output is sourced only with



22 categories based on the types of energy stored. Other energy storage technologies such as 23 compressed air, fly wheel, and pump storage do exist, but this white paper focuses on battery 24 energy storage systems (BESS) and its related applications. There is a body of 25 work being created by many organizations, especially within IEEE, but it is



As an extension of our system design & engineering services, we offer quarterly consulting to contractors, EPCs and manufacturers. One of the questions we hear often through our consulting projects is how to size energy storage systems (ESS) for partial or whole-home backup. One of the questions we hear often through our consulting projects

HOW TO DESIGN ENERGY STORAGE CAPACITY SYSTEM



Detailed guide to the many specifications to consider when designing an off-grid solar system or complete hybrid energy storage system. Plus, a guide to the best grid-interactive and off-grid inverters and hybrid solar inverters for residential and commercial energy storage.



In an effort to track this trend, researchers at the National Renewable Energy Laboratory (NREL) created a first-of-its-kind benchmark of U.S. utility-scale solar-plus-storage systems. To determine the cost of a solar-plus-storage system for this study, the researchers used a 100 megawatt (MW) PV system combined with a 60 MW lithium-ion battery that had 4 hours of storage (240 ???