

# HOW TO INSTALL 60V PHOTOVOLTAIC PANELS



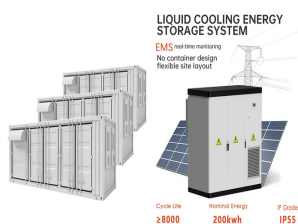
Are you wondering how much a new solar panel installation may cost in the UK? Use our calculator below to get an estimate. The solar panel cost calculator below will help you determine how much energy you can save, as well as the financial rewards you could potentially earn by installing a solar panel array on your property.



There is no doubt that solar energy saves electricity costs especially in the long run. So the benefits that home and business owners achieve is immense. The Procedure For Installing A Solar Panel. The installation of a solar panel ???



Many factors impact if your home is suitable for installing solar panels, including the type of solar panel being installed, and the orientation and pitch of the roof. " Solar PV (photovoltaic) panels generate electricity from ???



Big solar panel system: 1kW, 4kW, 5kW, 10kW system. These include several solar panels connected together in a system (2 ??? 50 solar panels). We did a bit of math on solar panel output per sq ft here; on average, you can install 17.25 W of solar panels per sq ft. That means the 360 sq ft of solar panels can constitute a 6,210 W system. Let



Summary. You need around 200-400 watts of solar panels to charge many common 12V lithium battery sizes from 100% depth of discharge in 5 peak sun hours with an MPPT charge controller.; You need around 150-300 watts of solar panels to charge many common 12V lead acid battery sizes from 50% depth of discharge in 5 peak sun hours with an ???

# HOW TO INSTALL 60V PHOTOVOLTAIC PANELS



If you've already purchased your solar panel array and balance of system and you'd like to install them yourself, here are X basic steps that apply to most residential photovoltaic systems. The instructions should be used only as a summary of the basics of connecting solar panels to each other and your balance of system installation.



Preliminary Steps for Solar Panel Installation. Before starting with your rooftop solar panel system, make sure to do some key steps. You need to look at how much electricity you use now. Then, you decide on the right solar ???



Solar charge controllers play an integral role in solar power systems, making them safe and effective. You can't simply connect your solar panels to a battery directly and expect it to work. Solar panels output more ???

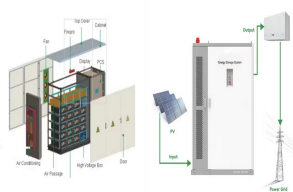


Renogy's Bifacial 550-watt Monocrystalline Solar Panel can capture sunlight from both sides, providing up to 30% more energy than traditional solar panels. Determine the Installation Expense. The upfront investment in installing the solar panel can be expensive; therefore, specify the amount you can spend on setting up a solar system.



Solar panels could reduce your bills and even earn money by generating electricity you can sell back to your energy company. But the average solar panel system of 3.5kWp will cost around ?7,000 to install, according to estimates from the Energy Saving Trust.

# HOW TO INSTALL 60V PHOTOVOLTAIC PANELS



DIY Solar Panel Installation is a great way to produce renewable energy and lower your energy bills. Read our guide on how to install solar panels yourself. Skip to content. 8.00am - 4.00pm; 01903 213141; Home; About; Contact; News/Blog; FAQ. 12v solar panel kit instructions;



The Solar Panel Open Circuit Voltage (VOC) Solar Panel Maximum Power Point Voltage (Vmp) Solar Panel Temperature Coefficient of Pmpp; Solar Panel Temperature Coefficient of VOC. If your eyes are rolling ???



Required accessories may vary depending on the brand and model of your solar panels. 3. To avoid usage issues, make sure the solar panel connection to each XT-60 interface is identical in terms of model, capacity, voltage, and other relevant characteristics. If you have any questions, feel free to contact Anker Customer Support for further assistance.



Don't buy a solar panel with a charge controller, since the Jackery power stations have these built-in already. and you need to stay within the 17-60V range. One 100W 12V panel will have a working voltage of around 18-20V, so you shouldn't connect more than three of those in series. Installing MC4 connectors on wire is relatively



Discover how to install solar panels and batteries to cut energy costs and embrace a greener lifestyle. This comprehensive guide covers assessing your energy needs, selecting efficient equipment, and the detailed installation process. Learn essential maintenance tips and safety precautions to ensure optimal performance. Unlock the benefits of solar energy ???

# HOW TO INSTALL 60V PHOTOVOLTAIC PANELS



When the sun shines on a solar panel, solar energy is absorbed by individual PV cells. These cells are made from layers of semi-conducting material, most commonly silicon. The PV cells produce an electrical charge as they become energised by the sunlight. The stronger the sunshine, the more electricity generated.



3. Make space for the solar panel accessories (solar inverter, cables and solar batteries, if desired), for instance in a plant room. 4. Plan a day for installation. 5. Erect the scaffolding (this can be done by your supplier or by a company you organise) 6. The solar panel mounts will be installed. 7. The professionals will install the solar



Check the orientation, size, pitch, and shading of your roof. The ideal roof for a residential solar system has 500 sq ft (46 m<sup>2</sup>) of unobstructed, south-facing, unshaded space, sloped at a 30-degree pitch. Your roof likely doesn't meet this ideal, but that doesn't mean it's unsuitable for solar. East- or west-facing roof areas are okay, so long as they're not shaded by ???



You've got solar panels??? pretty cool, right? Clean, green energy zipping around, cutting down electric bills. But sometimes, they get a little overzealous and pump out more voltage than you bargained for. That's not so chill for your battery, inverter, or devices that are hitched to them. No worries, though! We're diving into the ins and outs of voltage, why ???



In this guide, we'll explain a typical solar panel installation from start to finish, as well as what all the hardware does, and where on your property you can install the panels. If you're interested in how much you could save ???

# HOW TO INSTALL 60V PHOTOVOLTAIC PANELS



Solar panel optimisation is an optional feature that optimises the output from each panel independently. Find out more about it here. like Tigo ??? is you don't have to put them on every solar panel. If you have an installation in which only a few panels will get shade, then you can only add optimisers to those ??? saving lots of money



3. Attach the Fixing Bracket to the Solar Panel's Mounting Hole. Now that you've aligned them properly attach the fixing bracket to the mounting hole of the solar panel. Repeat this process on the other side of your solar panel. Ensure the bolts' alignment are symmetrical and fix the mounting holes at the same level.



Practically speaking, when useable area is limited, a 22% efficient 300W solar panel could take up most of the available space, limiting the room for future panels and increasing the complexity of wiring, whereas it could be possible to ???



Here's how to charge an e-bike with a solar panel: Determine how solar power will work with your e-bike; Choose a solar panel; Purchase the necessary wiring supplies; Connect the electric bike to the solar charging system; Place your solar panels in the sun to charge your e-bike Take your e-bike for a test ride



The best residential solar panels you can buy in 2024 1. SunPower Maxeon 6 AC: The best solar panels for UK homes. Price when reviewed: From around ?350 exc. installation (per panel) | Find out more at ???

# HOW TO INSTALL 60V PHOTOVOLTAIC PANELS



Suppose, in our case the load is 3000 Wh/per day. To know the needed total W Peak of a solar panel capacity, we use PFG factor i.e. Total W Peak of PV panel capacity =  $3000 / 3.2$  (PFG) = 931 W Peak. Now, the required number of PV panels are =  $931 / 160W = 5.8$ . This way, we need 6 numbers of solar panels each rated for 160W.



A lead-acid battery will take the energy from the solar panel, leaving it depleted so long as the panel is not in the sun. Under this example, you are literally removing the voltage from the solar panel. 2. Install a step-down converter; Which would block a portion of the energy from the solar panel, thus reducing the voltage.



Solar panel efficiency represents the percentage of sunlight that a solar panel can convert into electricity. It is a crucial factor in determining how effectively a panel utilizes sunlight. For example, if a 600-watt solar panel has a rating of 18%, it can convert 18% of the sunlight it receives into electricity. Voltage



Discover the step-by-step process, from choosing the right equipment to ensuring proper installation and integration into your home's existing electrical system. Maximize the benefits of solar energy and reduce your reliance on fossil fuels ???



Case Study: solar panel installation for an average UK home ??? House type: Semi-detached ??? Solar panels: polycrystalline 4kW ??? Number of panels: 10-14 ??? Solar panel cost, including installation: ?7000.00 (Actual price ranges from ?5,000 to ?9,000) ??? Estimated annual output: 3600 kWh (South of the UK) ??? Estimated Smart Export Guarantee Tariff: ?50.00 (SEG ???