

# HOW TO INSTALL PHOTOVOLTAIC CLAMP BRACKET



How do I install a fixing bracket on a solar panel? Attach the Fixing Bracket to the Solar Panel3. Attach the Fixing Bracket to the Solar Panel???s Mounting Hole 4. Attach the Other Leg of the Fixing Bracket 5. Attach the Adjustable Bracket to the Fixing Bracket 6. Connect Multiple Panels (Optional) If you???ve decided to reduce your reliance on the grid and switch to solar, congratulations!



What are solar panel brackets? Solar Panel Brackets: The Ultimate Guide,types and best options. Solar panel brackets are an essential component of any solar panel system. They are used to secure solar panels onto rooftops,ground mounts,or other structures. The brackets are designed to withstand harsh weather conditions and provide a secure foundation for the panels.



Do solar panel brackets need to be installed correctly? Proper bracket installation is key to ensuring the longevity and performance of a solar panel system. Solar panel brackets are an important part of the installation process and should be installed by a professional. The brackets must be installed correctlyto ensure the safety and longevity of the solar panel system.



What are mounting brackets & rails for solar panels? Mounting Brackets are the primary components that attach the solar panels to the mounting surface. They come in various types depending on the mounting surface (roof,ground,pole,etc.). Rails: Rails are long,horizontal structures attached to the solar panels using clamps. They provide a stable base for the solar panels.



How do solar panel brackets work? Solar panel brackets mount solar panels on roofs or other structures. The brackets are designed to securely hold the panels in place while allowing for proper air circulation,which keeps the panels cool and operating efficiently.

# HOW TO INSTALL PHOTOVOLTAIC CLAMP BRACKET



What are the different types of solar panels clamps? Two types of clamps are typically used: end clamps and mid clamps. End clamps secure the end of a row of panels, while mid clamps are used between two panels. Grounding Clips: These ground the entire solar panel system, ensuring safety and reducing the risk of electrical shocks or fires.



The clamps should be able to resist UV radiation, temperature fluctuations, and moisture to prevent degradation over time. SIC Solar's clamps are made from weather-resistant materials and undergo rigorous testing to ensure long-lasting performance. 6. Ease of Installation. The clamps should be easy to install, with clear instructions and



Mounting Brackets are the primary components that attach the solar panels to the mounting surface. They come in various types depending on the mounting surface (roof, ground, pole, etc.). Rails: Rails are long, horizontal ???



We manufacture Solar Panel mounting brackets, Solar Panel Roof Hooks, Solar Panel Roof Clamps, Solar Panel Roof Brackets and Solar Panel A-Frames for all roof surfaces including Tiled roof, Flat roof, Slate Roof, Corrugated Roof, IBR ???



This includes mounting brackets, clamps, screws, nuts, bolts, grounding wires, and other components. Mounting solar panels on a roof is a crucial step in installing a solar photovoltaic system. The mounting structure must be erected properly, be sturdy enough to hold the panels, wiring, and other system components, and be engineered to

# HOW TO INSTALL PHOTOVOLTAIC CLAMP BRACKET



Different design methods of solar photovoltaic brackets can make solar modules make full use of local solar energy resources, so as to achieve the maximum power generation efficiency of solar modules. Moreover, the different materials, assembly methods, bracket installation angles, wind loads and snow loads of solar photovoltaic brackets can greatly ???



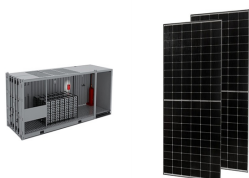
Solar panel clamps are an important auxiliary tool for installing photovoltaic panels. It is able to effectively hold photovoltaic panels and connect mounting brackets. Depending on the application, PV clamps can be divided ???



The "direct-attach" method utilizes clamps or brackets and a grab system to marry the module to the clamp or bracket that is mounted directly to the built in rails. installation (19) PV (18) rail mounted solar panels (12) cost (11) plastic snow guards (10) weather-proofing (8) sealants (5) solar (2) webinar (2) MLPE (1)



3) Mid Clamps (Unirac Master List page 20) The number of end clamps required is equal to one less than the number of modules on each row. For nine modules, I need eight mid-clamps for each rail. As I have four rails, I need 32 mid-clamps. The module thickness is also important here.



Mounting solar panels refers to the process of installing solar energy systems onto a structure such as a building or ground mount. The procedure usually involves securing the panels with a racking system on the ???

# HOW TO INSTALL PHOTOVOLTAIC CLAMP BRACKET



First, before starting the installation, make sure the following preparations have been completed: Safety check: Wear appropriate protective equipment, such as gloves, safety glasses, etc. Check the number of wire clamps: Determine the number of PV cable clamps required based on the design drawings of the solar system.



Put the clamp bolts into the installation holes, and then tighten the nuts. Repeat, put all clamp on the rail, keep the distance between two clamps can install the PV modules. (about 1m) STEP 3: Install the PV modules Insert the PV module into the clamp, and then tighten the nut. M8 ss304(16N?m~20N?m)



Solar panel mounting end clamps are used in the deployment of photovoltaic solar panels. Solar panel mounting end clamps are used in the deployment of photovoltaic solar panels. Key Features and Functions: Secure hold: Prevents ???



Wholesale S-5! clamps and brackets for metal roof mounted solar PV systems. S-5-PV Kit and all kit hardware from an authorized S-5! supplier. S5! clamps and brackets have been laboratory tested on a variety of seam types, profiles, and ???

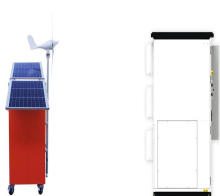


So, the D-Modules is pre-assembly with the clamp to save your install time. Tilt-in Align Up Fasten . Easy installation four steps . Grace solar's versatile design makes it suitable for a wide variety of building types and zones including Tile brackets should fixed to the rafter using two 12g mounting screws (M6x60mm) Installation . 2. 2

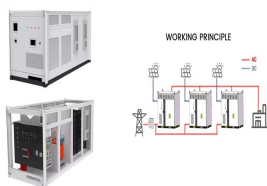
# HOW TO INSTALL PHOTOVOLTAIC CLAMP BRACKET



for bonding as the fault current ground path: PV module, Mid Clamp, End Clamp, Pedestal and Ground Lugs. Solar Stack pedestals can be installed on BUR (Build Up Roofing), Mineral surface (Modified). **INSTALLING THE MODULE CLAMPS** Clamps hold the modules onto the frame. There are two types: end-clamps and mid-clamps.



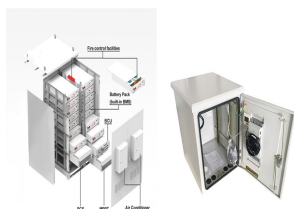
This is the most comprehensive solar panel mounting video article, including videos of various mounting brackets. For example, how to use the balcony to install solar panels. This includes iron sheet/ground roof solar panel bracket installation, tile/slate roof solar panel bracket installation, aluminum ground bracket installation, concrete/sand installation bracket, etc. At the end of the



Solar Panel Bracket End Clamps Kit, Solar Panel Edge Clamp Brackets, Solar Panel Attachment for Solar Panel, Solar Panel Clamp for Mounting Photovoltaic Solar Panel Bracket (12PCS 30MM) : Amazon .uk: Business, Industry & Science This product is suitable for quick and easy installation of solar photovoltaic panel brackets on various tile



With a full range of roof hooks and brackets, PV-ezRack SolarRoof??? is suitable for most roofing types, including pitched tile roofs, metal roofs, concrete roofs and even slate roofs. Install PV-ezRack SolarRoof for Commercial & Industrial Solar Project. End Clamp, Dual 35 or 40mm. ER-EC-DU35/40. End Clamp, Dual 40 or 46mm. ER-EC-DU40



This system allows installation on tile roofs. With a full range of roof hooks and brackets, PV-ezRack SolarRoof??? is suitable for most roofing types, including pitched tile roofs, metal roofs, concrete roofs and even slate roofs. Clenergy-PV-ezRack, Zano End Clamp and Inter Clamp 28-42 mm, Length 50 mm datasheet: Download:

# HOW TO INSTALL PHOTOVOLTAIC CLAMP BRACKET



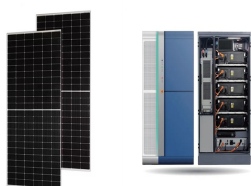
These two installation methods can cover the photovoltaic array installation forms of most buildings. PV array roof installation forms mainly include a horizontal roof, inclined roof, and photovoltaic lighting roof. among them: 1. Horizontal roof: 1) On a horizontal roof, the photovoltaic array can be installed at the optimal angle to obtain



Valsa's Roof mounting brackets and structures provide a solution for the installation of solar panels onto all types of roofs i.e. commercial, industrial, and domestic for the harvesting of photovoltaic power.



Threaded holes in the clamp (and stainless hardware provided) enable the easy attachment of an S-5-PV solar panel mounting system without violating the integrity of the roof or the roof's warranty. With very few exceptions, the attachment of a single Mini S-5 clamp to the roof seam will be stronger than that point of the seam on the building structure.



Valsa's solar PV mounting solution for slate roofs ensures durability and efficiency. approved by South Africa roof manufacturers which ensures that the roof warranties and guaranties remain intact for the PV solar installation. Middle Clamp U-shape Bracket 30mm: BRAMC35U: Middle Clamp U-shape Bracket 35mm: BRAMC40U: Middle Clamp U



Greentech Renewables has organized crucial insights to help solar installers understand the most cost-effective and safest options when working on metal roof solar installations. The following article covers various metal roof types and their associated racking methods, reviews industry-leading metal roof racking equipment, and offers best practices in installing PV systems on ???



# HOW TO INSTALL PHOTOVOLTAIC CLAMP BRACKET



???Place the photovoltaic module on the bracket to ensure that the edge of the module is in close contact with the bracket track. ???Place the end clamp on the edge of the module and fix it to the ???

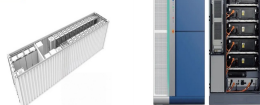
APPLICATION SCENARIOS



It simplifies the installation process by helping to avoid errors from the start. How Do a Solar End Bracket & Spacer Work? A solar end bracket and spacer team up to ensure your solar panels stay put and evenly spaced. The end bracket connects to the end of the solar panel and the mounting rail, holding the panel secure on your roof or structure.



There are different types available, including railless brackets, and top-of-pole mounts, the specific type of bracket or clamp chosen depends on factors such as the dimensions of the solar panel, installation method, and ???



The fasteners for clamp or bracket to the roof must be installed before the PV Disk is mounted atop the clamp/bracket. The module can still be used as a spacer to place the clamps/brackets. Prepare a clamp or bracket with the full MidGrab/StandOff Assembly & PV Disk mounted atop it. Place this assembly so



In this guide, we'll explain a typical solar panel installation from start to finish, as well as what all the hardware does, and where on your property you can install the panels. If you're interested in how much you could save with a solar & battery system, click the button below, enter a few details, and we'll generate an estimate.

# HOW TO INSTALL PHOTOVOLTAIC CLAMP BRACKET



(also called roof-hooks or brackets), mounting rails and clamps. Mounting rails are usually made of aluminium (due to its lightness) and other components from aluminium or stainless steel. The mounting rails are fixed to the roof anchors install solar PV systems on pitched roofs using only MCS012 certified roof fixings.



Install a mounting system for solar thermal or solar photovoltaic panels. Consider the roof type (material and slope), weatherproofing, installation convenience, and wind and snow loadings. Choose an appropriate racking and mounting system ???