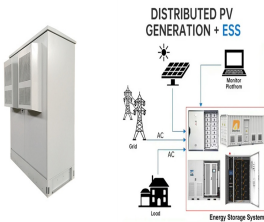


# HOW TO INSTALL PHOTOVOLTAIC PANELS

## BEHIND THE ROOF



3. Attach the Fixing Bracket to the Solar Panel's Mounting Hole. Now that you've aligned them properly attach the fixing bracket to the mounting hole of the solar panel. Repeat this process on the other side of your solar ???



Photovoltaic (PV) systems are one of the most important renewable energy sources worldwide. Learning the basics of solar panel wiring is one of the most important tools in your repertoire of skills for safety and practical reasons, after all, residential PV installations feature voltages of up to 600V.



In this guide, we'll explain a typical solar panel installation from start to finish, as well as what all the hardware does, and where on your property you can install the panels. If you're interested in how much you could save with a solar & battery system, click the button below, enter a few details, and we'll generate an estimate.



"Solar PV (photovoltaic) panels generate electricity from sunlight and will normally be installed on the roof of the building facing in the most south direction. The panels should also face as much south as possible.



Installing panels on the roof also helps avoid trees, which might already be trimmed back from the house. The existing tilt of a roof helps as well, angling the panels closer toward the sun.

# HOW TO INSTALL PHOTOVOLTAIC PANELS BEHIND THE ROOF



Stay tuned as we continue to explore more aspects of solar panel installation in the upcoming sections of this guide. Step-by-Step Installation Process. Embarking on a Solar Panel Installation project, whether it's a DIY Solar Panel Roof Installation or a professional undertaking, requires a methodical approach.



The first step in the solar panel installation guide is to install the mounts that will support the solar panels. These come in three primary types: pole, roof-ground, and flush mounts . Depending on the chosen mount, you can place solar panels on an RV, a rooftop, or even as a standalone device.



Flat roof PV systems are generally installed in the form of concrete columns and PV brackets. The investment cost is not high and the economy is better. On a horizontal roof, we can determine the angle of the PV panels by adjusting the brackets so that the PV system receives the most light radiation to obtain the maximum power generation. The biggest benefit of installing PV power ???



To install 6 panels on front roof plus 6 panels on the back roof CW birdguard with the inverter and battery in the loft, They tidied up and left around 7 in the evening with another 3 HR drive in front of them I have to say ???

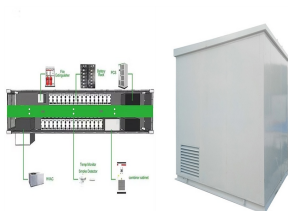


Avoiding Roof Leaks During Solar Panel Installation. Preventing roof leaks under solar panels starts with proper planning and careful installation practices. Here are a few tips to avoid leaks during the installation process: 1. Thorough Roof Inspection. Before installing solar panels, conduct a thorough inspection of your roof. Address any

# HOW TO INSTALL PHOTOVOLTAIC PANELS BEHIND THE ROOF



In the past I've written about solar panel clamping zones which determine where, on a solar panel's edge, you can place the clamps that attach the modules to their mounting rails. What I didn't do was go into just where on a roof solar panels can and can't be installed. Depending on the roof mounting system used to attach the panels, there may be "exclusion ???



3. Make space for the solar panel accessories (solar inverter, cables and solar batteries, if desired), for instance in a plant room. 4. Plan a day for installation. 5. Erect the scaffolding (this can be done by your supplier or by ???



1. Solar panel costs are too expensive. Solar panels aren't cheap, but their price has dropped dramatically over the past decade. They can be less expensive than other renewable technology, such as heat pumps, and achieve greater energy bill savings.



See also: Solar panel mounting Roof + Ground (RV ??? Houses ??? Boats) Step 2: Install Roof Attachments. This step is where things start looking up (literally). Keep in mind the considerations for attachment types, depending on your roof type! See also: How To Lift Solar Panels Onto Roof. Step 3: Install Racking Rails



Roof-integrated solar panel installation is a simple process with Marley SolarTile(R) - just secure the fixings, place the first tile, push-fit additional tiles and then attach final fixings and flashings. The entire process can take less than one hour per kilowatt peak, and our integrated solar roof system is provided with all components in colour-coded boxes to make the process even easier.

# HOW TO INSTALL PHOTOVOLTAIC PANELS BEHIND THE ROOF



Preliminary Steps for Solar Panel Installation. Before starting with your rooftop solar panel system, make sure to do some key steps. You need to look at how much electricity you use now. Then, you decide on the right solar ???



An in-roof solar panel system sits on top of the roofs battens and is then tiled or slated around. It is possible to create a whole roof out of solar panels using an in-roof system. Making the whole roof out of solar panels can be a fantastic option as installing solar panels is an asset to the home because of the savings in electricity and



allows some ventilation behind the panels. Roof-integrated panels can be supported on frames fixed directly to the rafters and integrated into the rest of the roof using a flashing kit to keep the roof waterproof. Flat roofs Solar PV panels on a flat roof will produce more electricity if they can be angled toward the sun rather than laid



Solar Panel Installation on Tiled Roofs: Best Practices for Mounting Roof Rails, Hooks, Connecting Panels To Rails and Safety. Installing solar panels on roofs is a popular choice for several reasons: low chances of ???



In fact, your roof may be in more need of TLC than the solar panels you want installed on it. So first, a professional surveyor will check your roof and rafters to ensure that a solar panel installation can go ahead safely. The results of the survey may affect the price quoted by your solar panel providers. With that done, the installation can

# HOW TO INSTALL PHOTOVOLTAIC PANELS BEHIND THE ROOF



From roof damage to weight concerns, we will cover it all. So, let's dive in and learn how to navigate the potential pitfalls of installing solar panels on your roof. 1. Roof Damage. One of homeowners' main concerns ???



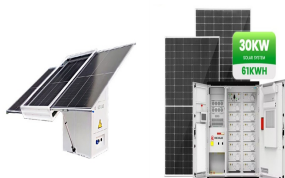
If you're not sure whether your roof is a good candidate for solar panels, you can have a solar site assessment done. This will help you determine the best location for your panels. Solar panel installation is a great way to save money on your electricity bill or reduce your carbon footprint. The process is relatively simple and there are



600W of new panels installed on the roof of our camper Risks of improper fitment. If you install a solar panel, and it comes off somewhere along the way, you put anyone behind you at major risk.



How to install solar panels wiring . Solar panel wiring installation is not overly complicated if you understand basic electricity procedures. First, there is a positive wire and a grounding wire. Most solar components have a port for a positive wire and a grounding wire. Next, you would use a ferrule to attach the wires to the components



Assessment of Roof Suitability for Solar Panel Installation. Not all roofs, including tiled roofs, are suitable for solar panel installation. To determine if your slate roof is compatible, several factors must be considered. Firstly, assess its structural ???

# HOW TO INSTALL PHOTOVOLTAIC PANELS BEHIND THE ROOF



This method allows for proper ventilation behind the modules, promoting their cooling and increasing overall system efficiency. Uneven surfaces on the roof can pose challenges during PV installation. If your roof exhibits undulations or warping, it is crucial to use adjustable roof hooks that can compensate for these irregularities



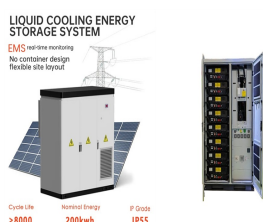
Ideally, install the inverter on an exterior wall between your solar panel's junction box and the main circuit breaker panel to your house. Some code's will require the inverter and your AC Disconnect switch to be within a certain distance of your electricity meter.



Bigger chunks of roof are easier, and cheaper, to install solar panels. Keep in mind that a standard residential solar panel is roughly five and a half feet tall by three feet wide. Pictured below, this 290 to 320 watt solar panel from URE represents a standard residential product. Panel sizes vary by manufacturer and model.



Home renovations don't have to be stressful or excessive, and solar panel installation is neither. Solar Panels Are Low Maintenance. Not only are solar panels easy to install, but they also require next to no maintenance. ???



Unlike regular solar panel installation, you'll also need to take the roof retrofitting into account, which involves removing and installing the slates/tiles. The price tag on roof retrofitting will vary widely, depending on the size of the roof and the material it's made of.