

HOW TO INSTALL PHOTOVOLTAIC PANELS IN ABANDONED FACTORIES



Can a solar PV system be installed on a factory roof? As factories are energy-intensive buildings, installing a solar PV system on the roof of a factory ensures free power can be generated to run everything underneath it. While reducing energy costs, a solar PV installation has the added benefit of demonstrating Corporate Social Responsibility thanks to its environmental credentials.



What is solar PV for factories? Solar PV for factories Solar powered factories typically have a rooftop space which can be allocated for the installation of solar PV panels. It can meet a percentage of the electricity requirements of the factory. Solar electricity provides added value especially in the case of factories as it can offset peak consumption.



Can a factory install a solar system? To bring these energy costs down, many companies harness the power of renewable energy by adding solar panels to their factory and warehouse roofs. Installing a solar system for your factory allows these facilities to produce their own power on-site for free.



What if I can't install solar panels on my listed building? Panels are often placed in less visible areas to minimise visual impact. What alternatives exist if I can't install solar panels on my listed building? Alternatives include joining community solar projects, using smaller solar solutions like solar lights, or improving the building's energy efficiency through other means.



Are there alternatives to solar panels on listed buildings? Alternatives include joining community solar projects, using smaller solar solutions like solar lights, or improving the building's energy efficiency through other means. Are there grants or financial support available for installing solar panels on listed buildings? Financial support options can vary.

HOW TO INSTALL PHOTOVOLTAIC PANELS IN ABANDONED FACTORIES

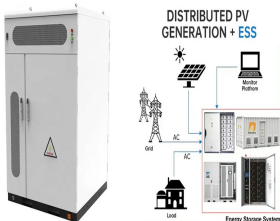


Can a factory run on solar power? Installing a solar system for your factory allows these facilities to produce their own power on-site for free. At Solar Alliance, we design, build and install customized solar energy systems for factories and warehouses from Knoxville, Tennessee to Kentucky.

Request A Quote Can Warehouses & Factories Run On Solar Power?



Here is the simple steps to install solar panels. Step ??? 1: Solar Panel Installation Made Easy. Step ??? 2: Assembly of Solar Panels. Step ??? 3: Electrical Wiring. Step ??? 4: Connection between Solar Panel and Solar Inverter. Step ??? 5: Connection between Solar Inverter and Solar ???



The roofs of factories are often the ideal place to install solar panels. As factories are energy-intensive buildings, installing a solar PV system on the roof of a factory ensures free power can be generated to run everything underneath it.



What Are The Cost Factors For Solar System For Factory. a) The size of the solar panel system. This will be determined by the factory's available roof space, electricity usage, and financial goals. As systems scale ???



How to start a solar panel installation business ??? step by step. With the first steps in setting up your solar panel business sorted, it's time to consider some practicalities. 1. Research the market and find your USP. Taking time to ???

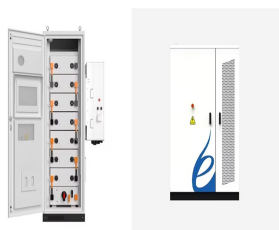
HOW TO INSTALL PHOTOVOLTAIC PANELS IN ABANDONED FACTORIES



Installing solar panels on steel buildings can also produce energy-saving benefits because installing photovoltaic modules on the roof is equivalent to adding a layer of maintenance structure; the thermally conductive structure inside and outside the factory changes, reducing heat exchange and thereby reducing the internal energy consumption of the factory.



The average cost range to install bifacial solar panels in the US is \$6,000 to \$12,000. According to Fixr, Top Bifacial Solar Panel Manufacturers in The Market. Bifacial cell technology is still relatively new, so not all solar panel manufacturers produce bifacial modules. Until recently, LG was one of the top bifacial solar panel



Many factors impact if your home is suitable for installing solar panels, including the type of solar panel being installed, and the orientation and pitch of the roof. " Solar PV (photovoltaic) panels generate electricity from ???



Finding an unshaded spot is best, but sometimes shading is unavoidable. Some solar panel systems can minimise the impact of shading using "optimisers". Solar optimisers help improve the overall performance of your solar panel system. So, if one panel is shaded, it doesn't impact how much electricity the other panels can generate.



The installation of photovoltaic (PV) plants on vacant land and brownfields is a great opportunity to use abandoned or other unused land for solar energy production. Solar parks are one of the least intrusive of all the options to reclaim a former landfill site, both ???

HOW TO INSTALL PHOTOVOLTAIC PANELS IN ABANDONED FACTORIES



They use a variety of hand and power tools to install photovoltaic panels. They often use tools like drills, wrenches, saws, and screwdrivers to connect panels to frames, wires, and support structures. Most new solar installers begin by performing basic simple tasks such as installing support structures and placing PV panels on top of them.



How long it takes to install solar panels on a factory or other industrial building will depend on the size of the solar PV system and other factors. For installations consisting of 20 or so solar panels being installed on a small business, the installation could take place in a single day, similar to domestic solar systems.



To bring these energy costs down, many companies harness the power of renewable energy by adding solar panels to their factory and warehouse roofs. Installing a solar system for your factory allows these ???



Solar powered factories typically have a rooftop space which can be allocated for the installation of solar PV panels. It can meet a percentage of the electricity requirements of the factory. Solar electricity provides added value especially ???



Solar panels could reduce your bills and even earn money by generating electricity you can sell back to your energy company. But the average solar panel system of 3.5kWp will cost around ?7,000 to install, according to estimates from the Energy Saving Trust.

HOW TO INSTALL PHOTOVOLTAIC PANELS IN ABANDONED FACTORIES



Professional Installation. Solar panel installation should be performed by qualified professionals experienced in industrial applications. Proper installation ensures the system's safety, efficiency, and compliance with local regulations. Regular Maintenance. To maximize the lifespan and efficiency of solar panels, regular maintenance is



COST OF SOLAR PANEL INSTALLATION FOR FACTORIES, WAREHOUSES, AND INDUSTRIAL BUILDINGS. The average cost for commercial solar panel installation can be around ?16,000 to ?70,000 for a small to medium-sized setup. However, the total cost is heavily dependent on your usage. This is why it is important that factory owners go with a professional



At Solar Service Solutions, we specialise in the installation of cost-efficient solar panel systems tailored to the needs of factories and industrial buildings. With our expertise, we can design a system that aligns with your energy goals, striking ???



When it comes to installing an integrated solar panel system, there are two ways you can go about it: Use standard panels ??? This involves mounting regular panels on an in-roof frame, such as the GSE system or EasyRoof Evolution. This will cost a similar amount to the prices in the table above;

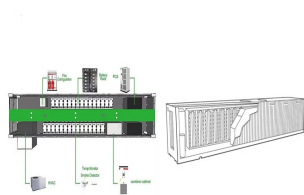


If you are installing a very large solar panel system, the installation costs may rise slightly, especially if it takes more time to carry out the installation. A way to estimate the installation costs of commercial solar panels is to calculate 0.2p per Watt fitted. That would mean it can cost approximately ?2,000 (excl. VAT) to install a 10kW

HOW TO INSTALL PHOTOVOLTAIC PANELS IN ABANDONED FACTORIES



Warehouses and Factories Are Ideal for Solar Panels. A typical warehouse or factory roof is the perfect landscape for a solar system. These roofs are usually large and flat with ample room for solar panel installation. They are also high enough off ???



Mounting: Securely mount the PV combiner box close to the solar panels.. Connections: Connect the positive and negative terminals of the solar panels to the corresponding inputs in the combiner box.. Safety Devices: Ensure fuses and surge protection devices are installed within the combiner box.. 4. Connecting the Inverter. DC Input: Connect the output ???



Module Assembly ??? At a module assembly facility, copper ribbons plated with solder connect the silver busbars on the front surface of one cell to the rear surface of an adjacent cell in a process known as tabbing and stringing. The ???



3. Make space for the solar panel accessories (solar inverter, cables and solar batteries, if desired), for instance in a plant room. 4. Plan a day for installation. 5. Erect the scaffolding (this can be done by your supplier or by a company you organise) 6. The solar panel mounts will be installed. 7. The professionals will install the solar



Contact Sunstore Solar today for expert advice, hand-picked DIY solar panel installation kits and the support you need to see the project through. Make an Enquiry. Please fill in the form below and we will aim to get back to you within 1 working day or call us on

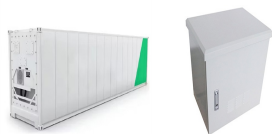
HOW TO INSTALL PHOTOVOLTAIC PANELS IN ABANDONED FACTORIES



The primary benefit of a solar PV panel installation for an SME, the reduction in your energy bill and carbon emissions will depend on how much of your energy you generate with solar panels. The UK average electricity bills for small and medium-sized businesses across all sectors clock in at £1,900 ??? £2,900 and £3,300 ??? £5000 respectively.



Materials for Solar Panel Manufacturing. The following materials are needed for your solar module production factory: Glass for front side; Embedding foil 1; Solar cells; Ribbons (connector wires for the solar cells) Interconnection ribbons (the bussing ribbon to connect the strings) Embedding foil 2; Backsheet (or backside glass for glass



Yes, you need to obtain listed building consent from your local council before installing solar panels on a listed building. How long does the approval process for installing solar panels on a listed building typically take?

Commercial and Industrial ESS

Air Cooling / Liquid Cooling

- Plug-and-play Solution
- Renewable Energy Integration
- Modular Design for Flexible Expansion



Industrial-scale solar and storage Solar panels for factories. Expansive roof space, intensive machinery and enormous energy bills ??? just a few reasons as to why solar panels and energy storage solutions are the perfect match for manufacturing and engineering companies.. Solarsense provide a nationwide design, supply, installation and maintenance service for solar ???