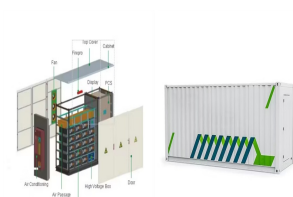


# HOW TO INSTALL THE PHOTOVOLTAIC PANEL LCD SCREEN



Learn how to connect the Rover 60 Amp MPPT Solar Charge Controller to a battery and solar panel in this video. The controller supports 12, 24, 36, and 48 volt systems, with different wattage capacities. Connect the solar panel using an adapter kit, and check the PV voltage on the LCD screen. Rover 60 Amp MPPT Solar Charge Controller Setup



Energy data visualisation of current solar power and CO2 savings as well as an innovative bulletin board for your own content. Solarfox(R) large displays visualise the performance of PV plants to the public quickly and easily. It is an informative eye catcher for visitors and customers to visualize one's commitment to renewable energies



Solar Panel Information. The display will generally show the power being generated by your solar panels at any given moment (the power output), usually in Watts, or equal to 1000 times the number of kilowatts. This figure fluctuates throughout the day based on sunlight intensity. Solar Inverter Specifics



The cost of repairing an LCD panel can vary greatly depending on several factors, such as the type of LCD panel, the size of the panel, and the severity of the damage. In general, the cost of repairing an LCD panel can range from a few hundred dollars to several thousand. The type of LCD panel is an important factor in determining the cost of



Panasonic PV-GS9 LCD panel replacement. Introduction. This guide shows how to remove the side panel containing the LCD viewing screen and speakers to gain access to other parts of the camera. What you need. ???

# HOW TO INSTALL THE PHOTOVOLTAIC PANEL LCD SCREEN



What is Solar Panel Mounting and Racking? Mounting solar panels refers to the process of installing solar energy systems onto a structure such as a building or ground mount. The procedure usually involves securing the panels with a racking system on the rooftop or ground and connecting the system to the power grid. See also: Solar Panel



A solar panel wiring diagram (also known as a solar panel schematic) is a technical sketch detailing what equipment you need for a solar system as well as how everything should connect together. There's no such thing as a single correct diagram ??? several wiring configurations can produce the same result.



Setup mode: To use the LCD buttons when the inverter cover is removed, touch the white dots on the LCD button frames. I. Removed Ferrite bead on AC wires I. Addition of link to the Designer web page I. Updated warning about sealing unused power optimizer input connectors I



It is a guide to installing solar panels, and we keep it short and sweet. But, we saved a bit of room for some essential tips and information you will want to know. So, keep reading as we get started. In this blog, we discuss: ???



3. Attach the Fixing Bracket to the Solar Panel's Mounting Hole. Now that you've aligned them properly attach the fixing bracket to the mounting hole of the solar panel. Repeat this process on the other side of your solar ???

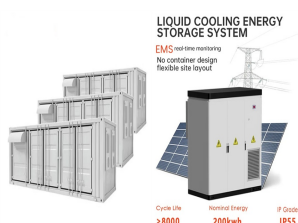
# HOW TO INSTALL THE PHOTOVOLTAIC PANEL LCD SCREEN



Many factors impact if your home is suitable for installing solar panels, including the type of solar panel being installed, and the orientation and pitch of the roof. " Solar PV (photovoltaic) panels generate electricity from ???



Ultra Clear LCD Screen. The FrogBro Solar Panel Tester boasts a large LCD screen, making it easy to read measurements even under direct sunlight. This feature eliminates the need to strain your eyes or rely on additional shading techniques while conducting tests. The clarity of the display ensures accurate readings and efficient troubleshooting.



The guide explains how solar panels work by converting sunlight into direct current (DC) electricity through photovoltaic cells. Key steps include purchasing necessary components like solar panels, a charge ???



Damaged and Faulty Solar Panels - Solar Panel Replacement. If any solar panel is damaged or faulty then in most systems (those where panels are wired together in strings) there is a good chance that the solar PV system will see a significant reduction in overall power generation. A damaged or faulty solar panel can't always be seen but it can



Generally, it is not necessary to press the LCD light button at the beginning of work, the display screen is bright, and the information can be directly read. If the inverter works for a period of time, the display screen is dark at this time, if you want to see the working status of the inverter, you can press the LCD light button.

# HOW TO INSTALL THE PHOTOVOLTAIC PANEL LCD SCREEN



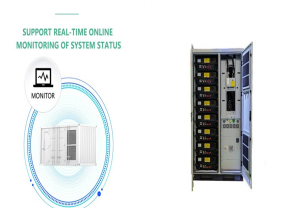
Installing solar panels starts with safety and preparation. Follow these solar panel mounting instructions for a successful diy solar panel setup. Setting Up Scaffolding. Starting any installation means safety first. Begin by ???



In this guide, we'll explain a typical solar panel installation from start to finish, as well as what all the hardware does, and where on your property you can install the panels. If you're interested in how much you could save ???



Here is the simple steps to install solar panels. Step ??? 1: Solar Panel Installation Made Easy. Step ??? 2: Assembly of Solar Panels. Step ??? 3: Electrical Wiring. Step ??? 4: Connection between Solar Panel and Solar Inverter. Step ??? 5: Connection between Solar Inverter and Solar ???



LCD screen Operating keys Installation hole Solar panel "+" interface As the solar panel's peak voltage ( $V_{pp}$ ) is approximately 17V while the battery's voltage is around 12V, when charging with a conventional charge controller, the solar panel's voltage will stay at around 12V, failing to deliver the maximum power.



How to start a solar panel installation business ??? step by step. With the first steps in setting up your solar panel business sorted, it's time to consider some practicalities. 1. Research the market and find your USP. Taking time to research the solar panel industry can go a long way towards helping set up your business.

# HOW TO INSTALL THE PHOTOVOLTAIC PANEL LCD SCREEN



3. Make space for the solar panel accessories (solar inverter, cables and solar batteries, if desired), for instance in a plant room. 4. Plan a day for installation. 5. Erect the scaffolding (this can be done by your supplier or by a company you organise) 6. The solar panel mounts will be installed. 7. The professionals will install the solar



If the installation site is remote, consider using a solar panel or battery backup system. Ensure all electrical connections are properly insulated and grounded. 5. **\*\*Environmental Protection\*\***: Install a protective cover or enclosure to shield the display from dust, debris, and other environmental factors.



Chapter 2: Installing the Antenna and the Wi-Fi Module Wi-Fi Kit  
Installation Guide - MAN-01-00161-1.1 7 Chapter 2: Installing the Antenna and the Wi-Fi Module Install a Wi-Fi antenna and module in all the devices that will communicate within the network. To mount the antenna: 1  
Connect the antenna to the mounting clip.



the front, the LCD light button will be located on the bottom of the top part of the inverter, just below the LCD screen. The LCD screen will illuminate, displaying four lines of information. Press the LCD light button again to move to the next screen. The third screen displays the total energy produced over various time periods. Look for the



This requires removing the inverter cover, which is to be performed by a qualified PV engineer as there are dangerous current levels inside the inverter. The following figures show the inverter ???

# HOW TO INSTALL THE PHOTOVOLTAIC PANEL LCD SCREEN



Finally, remember that installation costs have decreased significantly over time as well. So if you're interested in installing solar panels on your property, now may be the perfect time! 6. Can A 300-Watt Solar Panel Run A TV? The short answer is yes, you can use a 300-watt solar panel to power a television.



However, it is still important to learn how to properly install a PV connector, since in some cases or sections, the system may require you to make the connection yourself. This will probably occur if you do not find an MC4 extension cable with the right length. Connect solar panel strings in parallel by using a connector known as MC4 T