

# HOW TO LEAVE WIRES IN THE PHOTOVOLTAIC PANEL MAINTENANCE CHANNEL

---



How to protect a Floating photovoltaic system? Take special care with cables in floating photovoltaic systems. For underwater applications or cabling exposed to moisture, the following applies: cables and connectors must be properly protected and managed to prevent cable damage. 6. Use mounting points that suit the number of solar modules.



Do you need a professional cable management service for solar panels? The solar energy market has grown exponentially in recent years. As a result, the installation of cables in photovoltaic panels has now become an important area. To reduce failures and maintenance, professional cable management is essential. But what do workers need to look out for? Which products are the most suitable? Learn more now.



Why is wire management important when installing a PV system? One of the most important tasks when installing a PV system is wire management. This task is sometimes overlooked by installers or not given enough attention. Installers that take their wire management seriously will have longer lasting systems that require less maintenance over the lifetime of the PV system (20 to 30+ years).



What should you know about installing solar cables? Always ensure proper cable routing. Remember that if the cables are not managed properly, the solar system may experience problems such as constant pulling weight on the junction boxes, which may result in constant maintenance. 10. Always refer to this checklist when installing cables on photovoltaic plants.



How does a free-air solar cable conveyance system help utility-grade solar plants? This article explains how the free-air solar cable conveyance system by Snake Tray, the Solar Snake Max ???, helps utility-grade solar plants squeeze the most wattage out of every dollar spent on labor and materials to improve profitability.

# HOW TO LEAVE WIRES IN THE PHOTOVOLTAIC PANEL MAINTENANCE CHANNEL



How do you cable a solar plant? Solar plant developers have several options when cabling the arrays: Buried cable. Laying cable directly in the ground involves trenching and overcoming issues and delays caused by weather and hidden geological obstacles. Labor intensive and expensive, cable repairs are also costly and hindered by lack of visibility to an exact failure point.



The Importance of PV Wire Connectors in Solar Panel Installations When it comes to harnessing the power of the sun, solar panels play a crucial role in converting sunlight into usable energy. However, the effectiveness and efficiency of solar panel systems heavily rely on the quality and reliability of the components used, including PV (photovoltaic) wire connectors.



What is a Photovoltaic Cell or Solar Cell? A Photovoltaic Cell (PV Cell) or Solar Cell is the smallest and basic building block of a Photovoltaic System (Solar Module and a Solar Panel). These cells vary in size ranging from about 0.5 inches to 4 inches. These are made up of solar photovoltaic material that converts solar radiation into direct current (DC) electricity.



Therefore, the entire solar panel system requires regular maintenance and cleaning. These include checking for damage, repairing, and cleaning the battery, mounts, inverter, wires, and solar panels. ECO-WORTHY Solar Car Battery & Trickle Charger 5W Solar Panel Power 12V Batteries Maintainer Portable Waterproof Built-in Blocking Diode for Automotive Lawn Mower ???



Solar panels should be disconnected by first turning the solar disconnects to the off position, both on the DC and AC sides. The wiring connections between panels should then be removed. There can be several ???

# HOW TO LEAVE WIRES IN THE PHOTOVOLTAIC PANEL MAINTENANCE CHANNEL



Single-Core Vs. Multi-Core PV Wire. PV wire or photovoltaic cables come in either single-core or multi-core configurations, each serving different needs based on the solar system's design and scale. Choosing the right type of solar photovoltaic cable???be it single-core or multi-core???is essential when planning the layout of your solar



Leave the ground as undisturbed as possible. Simplified installation, operations, and maintenance. Quickly load cables and keep them separated and suspended to NEC code standards. Simplify ground maintenance. Expands development ???



Wire the Solar Panels. With the solar panels now in place, the next step is to connect them in a series. Aim to clean solar panels in the early morning or late evening, as direct sunlight can cause rapid evaporation and leave streaks. How Often: So, grab a notebook and start your own solar panel maintenance logbook. It's a simple tool



A solar panel disconnect switch allows for the easy and safe disconnection of a solar panel system from the electrical grid. It is an essential component for any residential solar panel system and can help prevent electric shock and damage to the system during maintenance or emergencies.



The reliability of solar panels hinges on the quality of their components, and one often underestimated element that wields a significant impact on performance is the solar panel junction box. Acting as a vital hub, this enclosure is responsible for directing produced current, safeguarding system electronics, detecting faults, and linking strings of panels. When ???

# HOW TO LEAVE WIRES IN THE PHOTOVOLTAIC PANEL MAINTENANCE CHANNEL



5 ? A solar installation might use various solar cable types such as sunny wire, photovoltaic wire, solar panel cables and solar panel extension cables. Each of these types ???



Installers that take their wire management seriously will have longer-lasting systems that require less maintenance over the lifetime of the PV system (20 to 30+ years). This will help both installers reduce maintenance work on ???



We share the success story of another satisfied customer who experienced the Eco Shine Solar difference. Our thorough 7-point maintenance check ensures optimal efficiency and longevity of your solar panels, providing you with a clean, green, and cost-effective energy solution. Watch the full video to hear firsthand how we've become the go-to choice for solar panel cleaning and ???



The mounts connect together in a channel or "zip-strip" configuration for enclosing longer cable runs. Quick to install, very affordable, and handy for neatening and organizing random cables. Leave Slack in Wires. One of the final and most crucial steps of installing a solar panel is passing the solar inspection ??? but for many



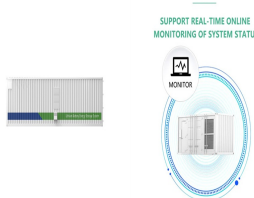
The rapid development of the photovoltaic (PV) industry has led to common practices of rushing project deadlines and grid connections. Consequently, a series of construction issues arise, including loosely ???

# HOW TO LEAVE WIRES IN THE PHOTOVOLTAIC PANEL MAINTENANCE CHANNEL

---



How to attach cables to photovoltaic solar modules the right way. As global market leader in cable management, HellermannTyton offers solutions that help prevent photovoltaic panel downtimes. With solutions that ???



With a solid understanding of solar panel wiring basics and the considerations for series and parallel wiring, you are equipped to create an efficient and high-performing solar panel system. Whether you choose series, parallel, or a combination, follow safety guidelines and local electrical codes and consult with a professional solar installer when needed.



Click above to learn more about how software can help you design and sell solar systems. Basic concepts of solar panel wiring (aka stringing) To have a functional solar PV system, you need to wire the panels together to create an electrical circuit through which current will flow, and you also need to wire the panels to the inverter that will convert the DC power produced by the panels ???



Solar panels are a significant investment in renewable energy. They are designed to last for decades, providing sustainable and cost-effective power. However, to truly maximise their lifespan and efficiency, regular solar panel maintenance is essential. This in-depth guide will look at various aspects of solar panel maintenance, from basic cleaning to ???



Connecting individual solar panels in an array requires the use of solar panel interconnect cables, also known as module interconnect wires. These cables allow solar panels to be connected in series or in parallel, maximizing ???

# HOW TO LEAVE WIRES IN THE PHOTOVOLTAIC PANEL MAINTENANCE CHANNEL



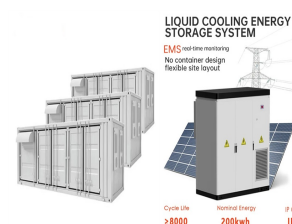
Components of a Solar Panel System. A solar panel system is made up of several key components that work together to generate and utilize solar energy. These components include: Solar panels: These are the most visible component of a solar panel system. Solar panels are made up of photovoltaic (PV) cells that convert sunlight into direct current



The total number of modules on each channel is different, but the number of modules on each string within Channel A and B are the same (eight on Channel A, five on Channel B). When wiring strings in parallel the current is ???



Solar cables are an essential component of your PV system, and they require regular maintenance and care to ensure their long-lasting performance and safety. By following the tips and tricks we shared in this blog ???



Poor and improper wire management products or techniques can damage PV wires and wire insulation, leading to ground-faults, system downtime, fires and high O& M costs early in the lifespan of a PV system.



Ensure that the solar panel is securely mounted in its final location, as per the guidelines in the previous sections. Electrical Connections: Run wiring from the solar panel to the inverter (for grid-tied) or to the charge controller (for off-grid). Ensure all wiring complies with electrical codes and safety standards. System Integration:



# HOW TO LEAVE WIRES IN THE PHOTOVOLTAIC PANEL MAINTENANCE CHANNEL



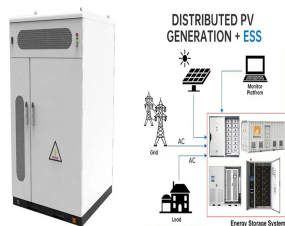
Use the proper hardware to attach the PV panels to the mounting framework. To guarantee correct spacing and alignment, follow the manufacturer's instructions. 2. Wiring PV Panels. When considering the wiring of solar panels, there are three primary connection options available: Series; Parallel; Series-parallel



Solar energy is increasingly becoming a mainstream choice for homeowners and businesses, offering both environmental and economic benefits. As with any investment, ensuring the optimal performance and longevity of solar panels is paramount for those who choose this renewable energy source<sup>1</sup>. While solar panels are often praised for their durability ???



Cutting the Damaged Section: Use wire cutters to remove the damaged section. Preparing the Cables: Strip the ends of the remaining good cable and the new replacement cable. Connecting the Cables: Twist together ???



Solar panel maintenance! This beginner's guide covers cleaning, inspection, monitoring, and more for optimal performance. While it's best to leave electrical work to professionals, you can visually inspect the junction box (where wires connect) for any signs of damage or corrosion. Solar Wires Types & Choosing the Right Photovoltaic

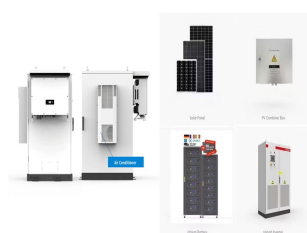


A solar panel's polarity is essential when installing or replacing a solar panel. Solar panels are polarized to generate more power during the day, but if your system is not set up correctly, you could be wasting valuable energy. head outside and remove the covers protecting your PV panels" wiring terminals. Place one probe from your

# HOW TO LEAVE WIRES IN THE PHOTOVOLTAIC PANEL MAINTENANCE CHANNEL



Properly supporting wiring refers to the practice of securing wiring either along PV modules and racking equipment or in conduit trays. Accomplishing this task requires choosing the appropriate components to do so. These components include stainless steel wire clips, UV-stabilized composite wire clips, UV-stabilized wire ties or a cable tray.



A solar panel preventive maintenance checklist involves checking electrical connections, ensuring they're secure, and inspecting for corrosion or loose wiring. How to Clean Your Solar Panels for Maximum ???



A firm foundation will reduce maintenance costs related to roof repairs and solar panel adjustments. Parts of a Solar Panel System With Microinverters. Each part of the solar panel system plays a valuable role in converting sunlight to usable electricity. Learn more about each part below. Solar Panels. Solar panels are the main component of



So get an installer who'll wire your panels in the most beneficial way, and make sure you keep an eye on any trees that grow near your panels so you can cut them back before they start to be a problem. Don't use a pressure washer, as this may cause more damage, and avoid soap, which is likely to leave a residue. If you don't have an



Crimping & tightening of solar panel connectors. Solar panels do not always come with the solar connector attached. Attaching a solar panel connector to a PV wire is a two-step process: (1) crimping and (2) tightening the connector, to do this you require a wire stripper, crimping tool, and a solar panel connector assembly tool.



# HOW TO LEAVE WIRES IN THE PHOTOVOLTAIC PANEL MAINTENANCE CHANNEL

---



(Source: Electrical Technology) By combining parallel and series connections in a hybrid wiring configuration, you can address issues like shade and high voltage to maximize your electricity output and performance.. Hybrid connections are often the optimal choice for larger solar panel arrays. Typically, you'll work with a professional installer who will assess ???