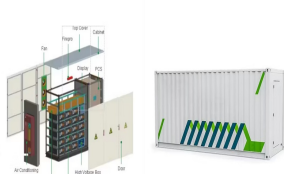
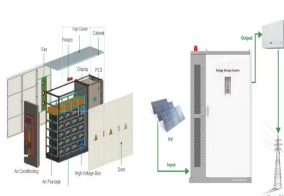


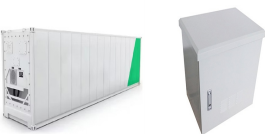
HOW TO PULL THE PHOTOVOLTAIC PANELS ONTO THE ROOF



Identifying the area for solar panel installation helps determine how many solar mounts you need. Also, while identifying the total rooftop area, you can specify the extent of shade-free area. Roof-mount solar panel installations are less intrusive and invasive, and there is no need for extensive pre- and post-installation work or



Mount Installation: Install the Solar Panel Roof Brackets or mounts, ensuring they are securely anchored to the roof's rafters. The type of mounts used will depend on the roof type and the Solar Panel Mounting ???



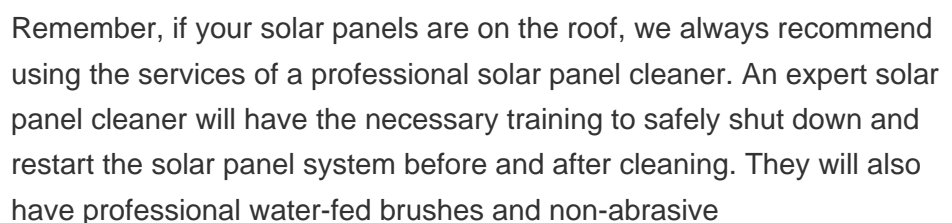
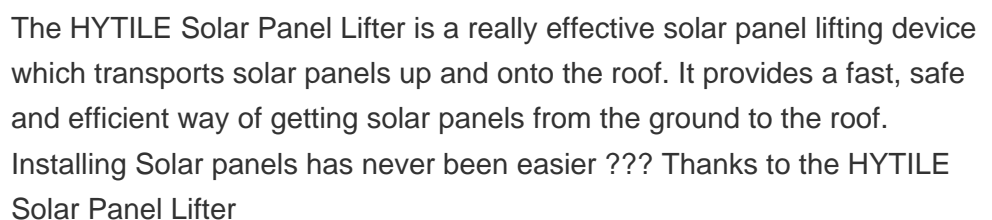
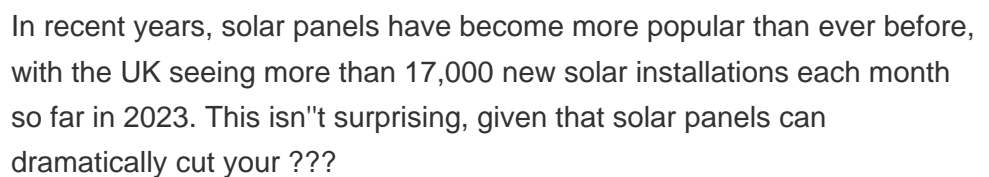
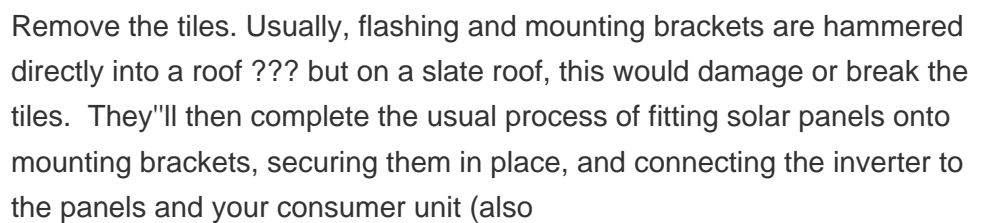
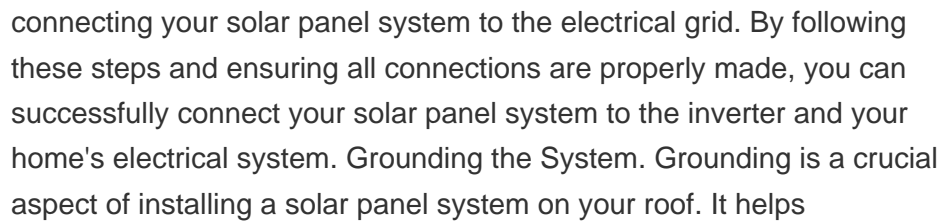
2. Attach the Fixing Bracket to the Solar Panel. Once you've gathered all the tools and followed up on permits and safety requirements, it's time to set up your mounting system. The first step is to attach the fixing ???



A successful DIY Solar Panel Roof Installation or professional project requires the right set of tools. Here's a list of essential tools: Panel Placement: Carefully place the solar panels onto the mounts. Ensure they are aligned properly and secured tightly to the mounting structure. Wiring and Connectivity.



1. Remove the tiles. On a slate roof, hammering flashing and brackets would ruin or crack the tiles. So, your installer will take out the required tiles carefully, with a hammer, a slate ripper, and maybe tin snips.



HOW TO PULL THE PHOTOVOLTAIC PANELS ONTO THE ROOF



For the roof, a 40lb solar panel will add about 2,8 pounds of weight per square foot on a pitched top, and for a flat roof, that will increase to about 5 lbs per square foot. So, if you are doing a 400 sq ft installation on a ???



By utilizing the open space on your roof, you can take advantage of the sun's energy and convert it into usable electricity. In this section, we will explore the introduction to solar panel roof mounts, highlight the benefits of installing solar panels on your roof, and discuss the factors to consider before installing roof-mounted solar



Roof Attachment Types. There are several types of roof fixings available for solar panel installations:. Roof Hooks . The first type we will look at is the roof hook. Roof hooks are typically made of stainless steel and are designed to attach to the rafters or trusses of the roof. They provide a secure and stable base for the solar panels.



To install solar panels on a corrugated metal roof, you need a mini rail system that is drilled onto the ridges of the roof via self-tapping screws. This keeps the panels close to the roof, minimising wind impact and bird ???



The process is much like the one discussed above on installation on a shingles roof. However, to mount panels on a tile roof, you should take off a couple of tiles. Then attach the tile hooks and the flashings onto the roof. The downside of mounting panels on a tile roof is that there might be damage during installation.

HOW TO PULL THE PHOTOVOLTAIC PANELS ONTO THE ROOF



Step 3: Fit the solar panel on the van roof. Position the panel onto your van roof until it's in the spot you want, but don't apply the adhesive yet. On your van, mark the corners where the panel sits so you can place it back into position when ???



By following these steps, you can securely fix solar panels to GRP roofs, enabling you to harness clean, renewable energy for your home or business. Regular maintenance and monitoring of your solar panel system will ensure optimal performance and longevity, allowing you to enjoy the benefits of solar energy for years to come.



Climb up onto the roof, then pull up the PV panel. Remember: use your legs, not your back! 4. Go down, TAKE OUT THE SCREW DRIVER and put in your back pocket 5. Rinse and repeat This simple PV panel rail is constructed with just 2x4s and a couple of long screws. Make sure there's enough play width-wise to allow easy sliding of the PV panel.



"Naturally the cost of solar panel installation will depend a lot on the quality of the panels, inverters and roof fixing materials, but most of all the cost can be massively influenced by the type of roof, type of roof cladding and the access to the roof, both for getting the panels onto the roof but also for getting the wiring from the

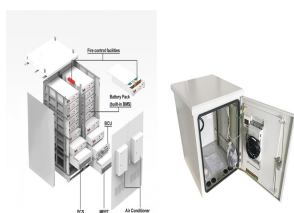


This is because a solar panel system usually weighs about 20kg per square metre, which the great majority of roofs can hold. However, flat roofs may not always be strong enough for solar panels. Drilling into a flat roof can cause leaks, so an installer will usually ballast the panels instead ??? but these will add around 80kg per panel.

HOW TO PULL THE PHOTOVOLTAIC PANELS ONTO THE ROOF



Let's break down and follow all the 6 steps to safely remove solar panels from a roof. Step 1: Inspect and Prepare for Removal. Before removing solar panels, take time to thoroughly inspect the system and make preparations: With 2-3 installers, plan for solar panel removal to take 1-2 full working days including roof repairs. The exact



Fitting a conventional solar panel to a flat roof: The solar panel is attached to the roof of the campervan using mounting brackets. These are generally made from plastic. A set of 4 corner plastic mounting brackets will usually be sufficient. For larger solar panels (or extra peace of mind) then additional side brackets can be used. The



As they come, solar panels cannot be mounted onto a camper van's roof. So, to do this, you must purchase one set of mounting brackets (Z-brackets) for every panel you have. Each set of Z-bracket mounts comes with the bolts & nuts needed to attach to a ???



Ideally, install the inverter on an exterior wall between your solar panel's junction box and the main circuit breaker panel to your house. Some code's will require the inverter and your AC Disconnect switch to be within a ???

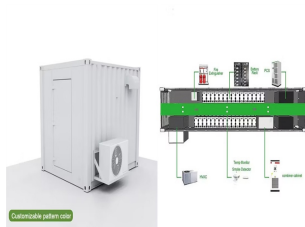


The first step in the solar panel installation guide is to install the mounts that will support the solar panels. These come in three primary types: pole, roof-ground, and flush mounts . Depending on the chosen mount, you can place solar panels on an RV, a rooftop, or even as a standalone device.

HOW TO PULL THE PHOTOVOLTAIC PANELS ONTO THE ROOF



Note that the other assembly materials or hardware should be included in the solar panel kit you purchased. If the installation items are all set, you can now proceed to the step-by-step solar panel mounting process. ???



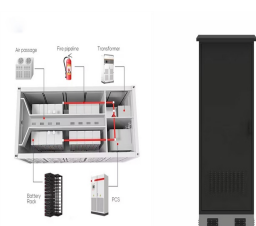
Step 2: Work on the solar panel connections. Secure at least two parallel solar panel support rails onto the shed roof. Ensure they're anchored and weatherproofed to withstand outdoor conditions. Create a small opening in the ???



Caravan solar panel mounting needs to be done well, or the panels come off and can easily kill someone. I simply put all 3 panels onto the roof of the Camper, marked where I wanted them to sit and then removed them, and on the day of installation prepared the surfaces, and put the panels on. Of course, if you remove the panel you'll



Make sure to thoroughly review the guidelines provided by your local building authority before proceeding with any solar panel installation on your site. Assessment of Roof Suitability for Solar Panel Installation. Not all roofs, including tiled roofs, are suitable for solar panel installation.



Lifting solar panels onto the roof is a critical part of the installation process that requires careful planning and execution. Lifting these substantial and often delicate panels to the rooftop is not a simple task. Solar Panel lifting requires an exact and careful approach to protect panels and the people involved.