

HOW TO REMOVE THE PHOTOVOLTAIC PANEL TERMINAL



How to safely disconnect a solar panel system? Here's how to safely and efficiently disconnect them: 1. Switch Off Power: Before disconnecting, ensure the power supply to the solar panel system is completely turned off. This is crucial to prevent electrical shock. 2. Identify the Connector: After getting the connector in hand, look for the locking tabs.



Should you remove solar panels when not generating power? Cover the Solar Panel: Even though you should disconnect solar panels at hours when they are not generating power, you should always try to cover them with opaque cloths before removing them. Doing this will ensure no solar generation, making it safer to disconnect the modules.



How do you remove a solar panel? Dismount the Solar Panel by Removing Bolts, Screws, and Clamping Nuts: If this is not a portable solar panel and you need to move it, you should remove the bolts, screws, and clamping nuts at the mounting hardware used to fix the panel in place.



What happens if a solar panel is left in situ? Disconnected solar panels left in situ on the roof of an RV or house PV system are still live. They may not be feeding power to the rest of the solar system, but they are still generating power. The same applies to a portable solar system. Having no load on the panels, i.e. nowhere for that power to go, is not a healthy situation.



How to remove MC4 connector from solar panel? Disconnect the MC4 Connector of Each Solar Panel: After everything is ready for disconnection, unplug the MC4 connector at the end of each solar panel. You can easily do this by using the disconnection/connection tool for MC4 connectors. If you lost it or did not have it at hand, you can always use a socket wrench to replace it.

HOW TO REMOVE THE PHOTOVOLTAIC PANEL TERMINAL



Can You disconnect solar panels before leaving an inverter? Although solar system outputs prior to leaving an inverter are low voltage, caution and safety are still paramount. Before attempting to disconnect the solar panels, isolate all AC or DC disconnect switches or fuses in the circuit. Try to make the disconnection at dusk, if at all possible when the panel output is low.



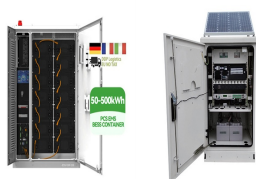
The first two measurements use the solar panel on its own with nothing else connected. When disconnecting the panel, regulator and battery, take care to disconnect the panel from the regulator first, and then disconnect the regulator from the battery. When reconnecting, connect the regulator to the battery first and then connect to the solar panel.



While connecting the stringing in series, the wire from the positive terminal of one solar panel is connected to the negative terminal of the next panel. When stringing panels are interconnected in series, each ???



MC4 connectors are commonly used in solar panel systems. Here's how to safely and efficiently disconnect them: 1. Switch Off Power: Before disconnecting, ensure the power supply to the solar panel system is completely turned off. ???



Learn how to properly connect photovoltaic panels, exploring the pros and cons of series, parallel, and series-parallel configurations. In a series connection, the modules are connected in such a way that the positive terminal of one panel is connected to the negative terminal of the next. This way, the voltage adds up, while the current

HOW TO REMOVE THE PHOTOVOLTAIC PANEL TERMINAL



Solar panel positive and negative must be determined. Learn how to check solar panel polarity as well as fix reverse polarity with our easy-to-follow guide. Step 2: Remove the covers that are protecting your PV panels" ???



There are two steps here: turning off the PV system and disconnecting the solar panels. Most repair work involves disconnecting the system, whereas a physical move incorporates the second set of instructions.



I can see some sense to disconnecting the panels first before removing the battery, and equally reconnecting the battery before connecting the solar panels, Its just good practice - because without the battery to "load" the circuit, the terminal voltage on the panels in strong sunshine can rise quite dramatically and some items connected to the system might be ???

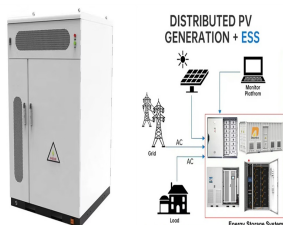


360 Watt solar panel with MC4 extension cables. This post is based on a video on my Everyday Solar channel. If you'd rather watch the instructions as a video, it's right here. If you ever need to remove the connection, just place them right at the connection, detent both sides, and voila! I hope this post helps with your project



EWK 3 Pcs Deutsch Terminal Removal Tool Kit 14, 16 & 20 Gauge
<https://a /d/e01for9> Actually one of those would probably work if one could find the right size. Last Weatherproof inlet connector for extra solar panels. RobBehr; Aug 16, 2024; DIY Solar General Discussion; Replies 8 Views 280. Aug 20, 2024. RobBehr. R. N. Another MC4 ???

HOW TO REMOVE THE PHOTOVOLTAIC PANEL TERMINAL



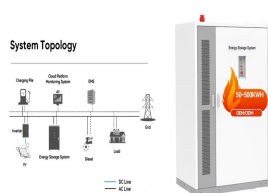
Will my panels still work? Whether you're moving, performing repair and maintenance, or preparing for a big storm, disconnecting your Solar PV system first is always a good idea. In this post, we'll explain how to disconnect ???



Connect the positive (+) terminal of one solar panel to the negative (-) terminal of the adjacent panel using a cable with male and female MC4 connectors. You can check our last blog on how to identify the positive and negative connectors to ensure you connect them correctly. Repeat this process for all panels in the series string.



Warning: Never measure current in a PV installation with the probe tips of a multimeter. This will cause short circuit current to flow through the multimeter, which may damage the meter. It also creates a safety hazard when you ???



4: Remove the Mounting Hardware. Take Off Mounting Brackets and Rails: Once the panels are removed, detach the mounting brackets and rails. This hardware will need to be reinstalled once the new roof is complete. Inspect the Roof for Damage: Before starting the roofing process, inspect the areas where the mounting brackets were attached for any signs of ???

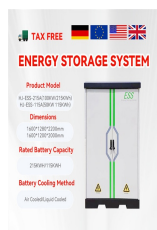


The amount of solar energy a solar panel can generate depends on its latitude and orientation. In Ireland, solar panels should ideally face south to maximise sunlight exposure. However, east and west-facing panels can still be effective. The angle of the panels is also crucial, with a tilt of around 30-35 degrees being optimal for Irish homes.

HOW TO REMOVE THE PHOTOVOLTAIC PANEL TERMINAL



I think the windscreen removal cutting wire you have ordered is probably your best bet for removing your duff panel. I recently fitted a couple of semi flexible panels on our van, but was thinking ahead in case they needed to be removed, plus I wanted ventilation under the panels as they get hot, so I made mounting blocks which I bonded to the roof and then bolted ???



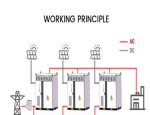
This is the easiest step and all it requires is removing the nuts and bolts that are holding down your solar panel to the bracket. Remove all mounting components carefully, while holding the panels into place. When all the components are ???



This blog will explore the essential dos and don'ts of solar panel snow removal. Optimize your solar investment, regardless of the weather. Let's dive in! The Dos and Don'ts of Solar Panel Snow Removal Dos: Inspect the Area: Ensure no hazards like power lines or sharp objects are near the panels.



Connect the positive terminal of one panel to the negative terminal of the other panel. Connect the negative terminal of the first panel and the positive terminal of the second panel and connect to the corresponding terminals in solar regulator's input. The solar regulator will detect the panels and start to charge the battery during sunlight.



Prepare Solar Panels for Wiring: Attach the MC4 connectors to the solar panel cables. Ensure a proper connection and use the crimping tool to secure them in place. Connect the Solar Panels: Begin the wiring process by ???

HOW TO REMOVE THE PHOTOVOLTAIC PANEL TERMINAL



Crimp the Terminal: Place the stripped end of the cable into the metal terminal and crimp it securely using a crimping tool. **Insert into Connector:** Push the crimped terminal into the MC4 connector housing until it clicks into place. **Connect to Panel:** Align the MC4 connectors from the solar panel and the cable, then push them together until they



When solar panel output drops unexpectedly, the culprit may be a degraded junction box no longer routing and regulating power flow properly. **Junction Box Removal.** Lift up the junction box terminal and insert the scraper into the silica gel to loosen it. Pull the cable toward the nearest frame to detach it from the back sheet. Remove any



The conduit connects the solar panel or array to the house or battery backup system. Remember positive wire to the positive terminal, the ground to the ground terminal. Double-check the connections are correct before powering up the inverter. Remember that the purpose of the tube is to remove any spot where the bare wire may



Expert Insights From Our Solar Panel Installers About How to Remove Snow from Solar Panels Our approach to snow removal emphasizes safety and efficiency. We recommend using a roof rake with a telescoping handle, allowing you to stay ???

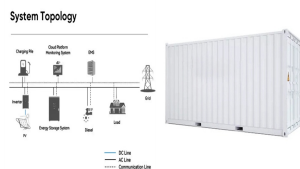


When wiring panels in series, you're joining the positive terminal of one panel to the negative terminal of another. The benefit to connecting your PV modules in series is that each panel increases the total voltage output of the entire system while the amperage stays the same.

HOW TO REMOVE THE PHOTOVOLTAIC PANEL TERMINAL



MC4 connectors are commonly used in solar panel systems. Here's how to safely and efficiently disconnect them: 1. Switch Off Power: Before disconnecting, ensure the power supply to the solar panel system is completely turned off. This is crucial ???



Connect the multimeter inline to the positive solar panel cable. 6. Remove the towel from your solar panel and read the amperage on your multimeter. Once again, adjust the panel's angle until you get the max current reading. My panel output a max of 4.46A. Pretty cool! 4.46A is around 71% of 6.26A.