

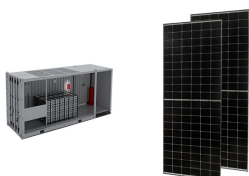
HOW TO START THE FAN BLADE GENERATOR



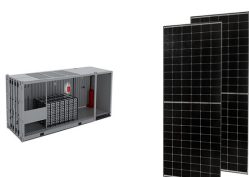
Are there replacement fan blades for a wind powered generator? There is no shortage of replacement fan blades available online or they can be built with some loose parts in a garage as well. Something else to remember is that the fan part of the wind powered generator can either be top-mounted like a weather vane or front-mounted like a standard window fan. Motor



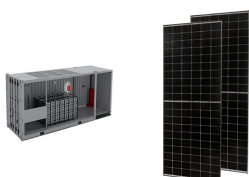
How do you attach a fan blade to a motor? Putting the Fan Blade Together With the Motor The small shaft sticking out of the front of the motor is where the fan blade attachment will be secured. Depending on what you decide to use for a fan and blade it should at least have a hub in the middle to both attach to the motor shaft and allow for spinning in the wind.



How do you turn a box fan into a wind turbine? Push the plastic fan assembly back on the motor. Give it a good spin. It should rotate freely without any scraping or grinding noise. The box fan turned wind turbine is complete and now ready for use. Not surprisingly, running a wind turbine on the ground is mediocre for wind (especially in a neighborhood with a lot of houses and trees).

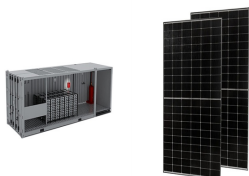


Can a PC fan be converted to a generator? The PC Fan is Brushless DC (BLDC) Motor. It can be converted to a generator in 5 Minutes. This is my website: Here is my Channel on Youtube: Banggood eBay Amazon US Amazon UK Amazon Deutch Amazon France Aliexpress eBay I also found this little great tool on eBay for only \$36 from here Stuff you need:



How do you commutate a fan? As the name implies, the electronics components convert DC into AC which makes the magnetic field in the stator rotate. The electronic commutation is achieved by a small IC. To get the induced current from the motor used as a generator, you must remove this IC. This is what I'll show you how. First remove sticker on the back of the fan.

HOW TO START THE FAN BLADE GENERATOR



How do I build a wind powered generator? Like any project dealing with self-sustainability building a wind powered generator involves a 3-pronged approach of ??? 1) starting small, 2) getting familiar, and 3) building your knowledge base and expanding.



As you fill the cups, the fan blades should start to turn, creating airflow. Basically, you turn the salt water into a saltwater "battery" that stores and discharges energy to power the fan. You can buy a solar generator or purchase individual solar panels for this purpose. You can eve make your own panels. Option 2: How to Run a



Presuming you are starting with a standard residential 36" to 54" diameter, flat blade, 3 to 5 blade ceiling fan I would recommend the following steps: 1. Replace the single phase fractional HP motor and replace it with either a dc generator or ac alternator.



Start by inspecting the fan blade to determine what needs to be fixed. Look for any cracks, bends or other signs of damage. This will help you decide how to proceed and what tools you may need. Step 2: Gather Your Tools. Before beginning any repair work, make sure you have all the necessary tools. Depending on the type of fan, you may need a



The fan speed, diameter, number of blades, blade angle, and location all play an important role in determining the induced flow pattern features in the space. Few previous studies have investigated

HOW TO START THE FAN BLADE GENERATOR



(unsuitable quality of surface can be result of the start of crack) and is led to interruption of it, in the effect of oscillatory loading of blade, and made progress in the time of turning. 3. however cannot declare exactly the reason of the starting of the crack. Failure Investigation of Gas Turbine Generator Cooling Fan Blades .



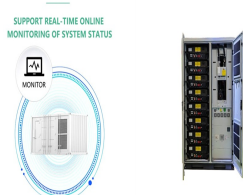
The failure analysis of a generator rotor fan blade was investigated by mechanical analysis and metallurgical examination of fracture surface. Starting from an introduction into important



The wind turbine blade on a wind generator is an airfoil, as is the wing on an airplane. By orienting an airplane wing so that it deflects air downward, a pressure difference is created that causes lift. On an airplane wing, the top surface is ???



The blades for the wind generator are also re-purposed car parts that come from a fan clutch. You can save a car from the scrap pile by recycling all of its parts into something useful. follow these easy instructions and start making your own off-grid power source. two alligator clips, poster board for blades, twenty inch box fan or



Turbine blades vary in size, but a typical modern land-based wind turbine has blades of over 170 feet (52 meters). The largest turbine is GE's Haliade-X offshore wind turbine, with blades 351 feet long (107 meters) ??? about the same length as a football field. When wind flows across the blade, the air pressure on one side of the blade decreases.

HOW TO START THE FAN BLADE GENERATOR



and cooling fan blades are subjected to cyclic stresses during engine start-up, operation and shut-down. The lifetime of these components are usually established on the basis of Fracture Analysis of Generator Fan Blades 319 addition, several small semi-elliptical cracks are also shown to have initiated from the opposite convex side of the



I take the print out of plan-form (top view) of the blade, and tape it onto my glued-up boards. The mark out the blade plan-form (top looking down onto the blade). Then use a band saw or jigsaw to cut out the plan form. Below is an image of the blade after the plan-form is cut out. you can see it lays on top of the drawing, and matches its edges.



1. Regularly check whether the installation of the fan is firm, and whether all the fan blades have obvious bending deformation. If found, it should be replaced immediately, so as to avoid accidents such as breaking the fan ???



Signs A Fan Blade Could Be Bad. When fan blades in the condenser develop problems, they often make a lot of noise. If the blades are not aligned and balanced, one blade might scrape against the metal as the blades spin. A blade that's bent can also cause a scraping sound to come from the condenser. The fan blades can often crack too.



The capacitor is used not only to start the fan but also to make it spin. In simple words, the capacitor creates a magnetic flux (torque) which makes the fan rotate. Generally, two capacitors in parallel series are used in the ceiling fan. Choosing the correct number of fan blades for a room helps find the optimal airflow. Fans with three

HOW TO START THE FAN BLADE GENERATOR



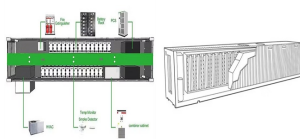
1. Fan not starting or not spinning. If your fan is not starting or not spinning, there could be several reasons for this issue: Check if the power cord is properly plugged into the outlet. Ensure that the circuit breaker or fuse is not tripped or blown. Inspect the fan blades for any obstructions or debris that may be preventing it from spinning.



These materials include a ceiling fan, a microwave oven transformer, an office chair, an old TV tower, and other miscellaneous electrical parts. To construct the wind generator, we repurpose the blades of an old ceiling fan and reinforce ???



Generator Fan/Blower Design, Inspection, and Maintenance Best Practices 15243360. 15243360. EPRI Project Manager J. Stein 3420 Hillview Avenue Palo Alto, CA 94304-1338 Figure 2-38 Erosion and Impact Damage on Generator Blower Blade .. 2-39 Figure 2-39 Single Bolt Axial Blade ..2-41 Figure 2-40 Crack in Radial Blower Blade



This wind turbine generator has a very good design and configuration. This is not a common generator since it has been designed to have three blades. And, it has a battery bank that holds the charges to power on LED lights or appliances at home. You can follow how I made it by visiting my video tutorial on making wind turbine generators at home.



Previously known as DALL·E mini, Craiyon is the new kid on the tech block and the best AI art generator (in our community's words!). The brainchild of our CEO, lead researcher, and AI hero, Boris Dayma, Craiyon is a free AI image generator that's painting a new generation for the AI art revolution through our own model.

HOW TO START THE FAN BLADE GENERATOR



Ensure to turn on the engine switch before starting your generator. This will enable the connection of the engine with the rest of the generator. Step7. Start the generator. Commonly, most generators have the recoil start. It entails a rope and grip as the rope is pulled out for the generator to start.



Whether you build or buy the blades, you'll likely want to have 3 blades on your wind turbine. Using an even number of blades, such as 2 or 4, makes a wind turbine more likely to vibrate as it spins. Adding more blades ???



2. Fan speed and diameter: Under the same power consumption, the cooling effect and noise of low-speed and large fans are significantly better than those of high-speed and small fans. In addition, when selecting a fan, it is important to note that the blade tip linear speed of the fan should not exceed 4200~5000m/min. 3.



This 7 part video series shows the conversion of a old unused ceiling fan into a power generator. Part One shows the dismantling of the ceiling fan and how to wire it up. Part Two shows how ???

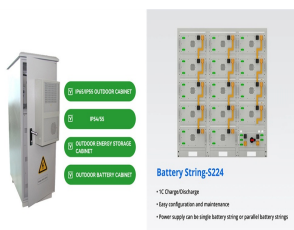


How to Turn A Fan Motor Into A Generator. There are a couple of ways to turn a fan motor into a generator. One way is to use a relay to connect the fan motor to the power outlet and the generator. The other way is to use a fan belt to connect the fan motor to the generator. Both methods work, but they have their own drawbacks.

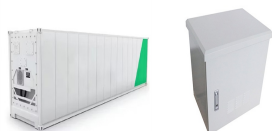
HOW TO START THE FAN BLADE GENERATOR



The shape of your blades and the direction they travel will define the performance characteristics of your fan. Fig 3 shows the velocity diagram for the air flowing into the fan (inlet) and out of it (outlet). v_{inlet} and v_{outlet} : the inlet and outlet velocities of the air through the blades will be the same for axial fans and different for centrifugal fans v_{inlet} and v_{outlet} : the circular



Broken or Obstructed Fan Blades . The AC fan may stop spinning if the fan blades are broken or obstructed. If the fan is loose or there are any objects blocking the path of the fan blades, then when the fan spins, it can ???



How to start a generator's engine and automatic voltage regulator (AVR) with a corded and cordless drill and the safety concerns associated with each of them. danger of not only the drill spinning out of control in your hands but getting your hands tangled in the rotor cup or fan blades that are spinning at 3,600 RPMs as you fumble with